



PO Box 31 Candia, NH 03034
sales@schmitt-horan.com
603.432.2237

Online Bidding

bids.schmitt-horan.com
www.liveauctioneers.com
www.invaluable.com
www.bidsquare.com

November 19, 2022 12pm

Lots 1 - 367 Special Event

Discovery Sale / Live Bidding Only

Public Preview

8am to 11:45am, November 19

Welcome to Schmitt Horan & Co.'s two day Fall 2022 live auction event hosted at our new facilities in Candia, New Hampshire. The auction on November 19 is an in-person bidding event only. The auction on November 20 will have multiple bidding methods available.

Auction Location:
80 Raymond Rd
Candia, NH 03034

We have an active social media presence on Facebook, Instagram, Twitter and Youtube. Please visit schmitt-horan.com to follow us or view additional detail images and condition reports not shown in this catalog.

For instructions on bidding, please see terms and conditions at the rear of catalog.

Preview By Appointment
November 14th to November 18th
Candia, New Hampshire

November 20, 2022 11am

Lots 368 - 550 Clocks, Watches, Antiques

Absentee, Phone, Online, Live Bidding

Public Preview

8am to 11:45am, November 19

8am to 10:45am, November 20

SUMMARY OF TERMS OF SALE

REGISTRATION Is required prior to the sale for all bidders, including online, internet, phone and absentee.

CONDITION OF LOTS We describe and evaluate each lot to the best of our ability. The condition and authenticity should be confirmed by personal examination. The final decision to bid, and the amount to bid is at the bidder's discretion and liability.

ITEMS PURCHASED Successful bidders must remit payment within 10 business days of close of the auction. It is the buyer's responsibility to verify that he / she has received accessories that may be separate when taking possession of their merchandise.

BUYER'S PREMIUM Buyers pay 20% premium on the hammer price. Paypal and all major credit cards are accepted. Invaluable, Live Auctioneers and Bidsquare bidders pay an additional fee of 5%, as well as the 20% buyer's premium.

PAYMENT Acceptable forms of payment include pre-approved personal checks, cash, Paypal, and all major credit cards: VISA, Mastercard, American Express & Discover.

BULOVA WATCHES

AUCTIONEER
Daniel Horan
NH License #5060

Lot 399



BIDDING INCREMENTS

We will make every effort
to use the following increments:

\$0 - \$500: \$25 increments
\$501 - \$1000: \$50 increments
\$1000 and up: Auctioneer's Discretion

Typically:
\$1001 - \$2000: \$100 increments
\$2001 - \$4000: \$200 increments
\$4001 - \$10,000: \$500 increments
\$10,001 and up: \$1000

CONTENTS

1	EVENT ANNOUNCEMENTS	46	EUROPEAN & MYSTERY CLOCKS
4	ARCADES GAMING	57	BLACK FOREST & GERMAN CLOCKS
5	HOROLOGICAL & MACHINERY	62	SKELETON & BRACKET CLOCKS
7	ANTIQUES, SILVER & JEWELRY	68	ELECTROMECHANICAL CLOCKS
8	WRIST WATCHES	70	AMERICAN CLOCKS
12	POCKET WATCHES	93	TERMS AND CONDITIONS
21	DECK WATCHES & CHRONOMETERS	94	INDEX
24	CARRIAGE & DESK CLOCKS	96	VENDOR INFORMATION
32	PRECISION HANGING REGULATORS	97	DELANEY ANTIQUE CLOCKS
40	TALL CLOCKS & REGULATORS	98	BID FORM

Lot 420



368

United Mfg. Co., Chicago, a mid 20th century coin operated "Sparky" bowling arcade game, lane with Formica surface and ash side rails, plastic pins, painted plywood case enclosing the electronics, and lighted glass displays scoring and tracking the action for up to six players

\$800-\$1400

Circa mid 20th c 75in x 29.75in x 103.5in

369

Bally Manufacturing Company, Chicago, Illinois, "Broadway" upright coin operated pinball arcade machine with bingo style operation where goal of the game is to match four or five numbers on a rotating "Magic Square" score card, housed in an oak and glass case with colorful score board and playing surface featuring show girls.

\$600-\$800

Circa 1955 70in x 28.5in x 57in



368

370

David Penney, a set of three framed, limited edition horological prints, the first featuring three views of a pocket watch by George Daniels with one minute tourbillon and fifteen second remontoire, the next with three views of John Arnold & Son marine chronometer # 50, and the last featuring three views of an ebonized table clock by Joseph Knibb, the set commissioned by the Clockmakers Company in 1981 to celebrate it's 350th anniversary, signed by the artist

\$800-\$1200

Circa 1981 20in x 27in

371

Bulova, a mid 20th century advertising sign, the hanging, rectangular sheet steel construct with teal blue neon spelling "Bulova watches"

\$500-\$700

Circa 1950 5.25in x 28.5in x 6in



369



370



371



372 Switzerland, a mid to late 19th century rose engine from the collection of Dr. Theodore Crom, cast iron rocking and pumping headstock, the spindle with 10 steel rosettes providing axial and lateral motion, indexing, and one smaller, outboard rosette, rotary motion imparted by an ivory handled crank powering a large wheel which drives the brass headstock pulley, adjustable, cast iron English style slide rest, all mounted to a mahogany, lyre base bench, accessories including a four jaw chuck, six jaw scroll chuck, motorized cutter frame, purpose made wrenches, cutters, tool box, and more



\$6000-\$9000
52in x 42.5in x 24in



374 D. Walker & Co., Newark, N.J., a mid 19th century Crane's patent self rocking cradle, the trestle base with scroll feet supporting the cradle, with turned wooden spindles, cupids bow head and footboard, and cast iron hangers suspended by a decorative, turned wooden column with iron pin at the foot, the head with enclosure for mechanical motor, also with iron pin, with original label

\$300-\$400
Circa mid 19th c 33.5in x 42in x 19in

373 A late 19th century case maker's lathe, of white painted cast iron with 9 inch swing, 18 inch bed, and integral, plain bearing headstock with threaded spindle, screw feed tailstock with internal thread, chuck and center for tailstock, T rest, and screw feed slide rest, the lathe powered by a 1/3 horsepower motor, all mounted to an oak top bench with cast iron legs, and including many collets, ranging in size from 1 inch to 2 3/4 inches, with internal thread for attaching to the spindle, and external thread for the closer



\$1800-\$2500
Circa 1880 52.5in x 36in x 20.25in



376



375

375 The Steiff Company, Baltimore, Maryland and Richmond, Virginia, a partial repousse Rose pattern dinner service consisting of 12 each soup spoons, knives, and dinner forks, six sugar spoons, eight iced tea spoons, a butter knife, two pickle forks, and salad servers, together with other sterling and plate items, knives weighed separately, approximately 68.5 troy oz TW (all but knives), approximately 29 troy oz. (knives)

\$700-\$900 Circa 20th c

376 A lady's engraved gold compact and hand mirror, the round, 14 karat gold compact with engine turned bottom, the rest with a textured ground, and bright cut engraving featuring foliage, flowers, and birds, the hand mirror also in 14 karat gold, with engine turning, a border of C scrolls, acanthus and flowers, and the center with floral engraving with C scroll border, with fitted case, 94.7g TW, compact dimensions listed

\$1300-\$1600 Circa 19th & 20th c .5in x 2.25in



377
Rolex Watch Co., Switzerland, a ref. 5513 "Submariner" with gilt underline dial, automatic winding, 26 jewels, cal. 1530 movement with lever escapement in a stainless steel case with pointed crown guards, rotating bezel, and ref. 7206 Oyster bracelet with 58 ends, and gilt, black underline dial with luminous baton, dot and triangle markers, and Mercedes hands, 40mm, serial #982913, with original crown and crystal

Condition: CASE: Polished; Minor bumps and dings; Back with a few dings; Bezel insert faded to steel gray; Acrylic crystal with fine scratches; Original crystal included with lot; Crown replaced, original 7mm crown without twinlock marking included with lot; Bracelet with wear and fine scratches. DIAL: Good, with fine spotting; 4:00 lume plot with small surface loss. HANDS: With dirt and minor oxide; Hour hand gold plated, minute and seconds are polished steel. MOVEMENT PLATES: A bit dirty; Very fine marks and scratches on plate; Automatic bridge screws with very minor losses to blue. MOVEMENT FUNCTION: Running order (winds, sets and ticks).

\$8000-\$12000
Circa 1963



378

Breitling, Switzerland, a ref. D13022 “Old Navitimer” wrist chronograph, 25 jewels, automatic winding rhodium plated ETA cal. 7750 movement with lever escapement in a round stainless steel case with 18 karat gold bezel and padded leather strap, baton marker silver dial with tachymeter scale, minute and hour registers at 12:00 and 6:00, constant seconds at 9:00, and date aperture at 3, luminous gold hands, 41mm

\$2500-\$3500

Circa 1995



379

Rolex Watch Co., Switzerland, a man’s ref. 1500 Oyster Perpetual Date wrist watch, 26 jewels, freesprung, automatic winding, adjusted to 5 positions and temperature, cal. 1570 rhodium plated movement with lever escapement, in a stainless steel Oyster case with Rolex Oyster bracelet, tapered baton marker black dial with date aperture at 3:00 and baton hands, serial #2153644 (case), D349136 (movement), 34mm

\$1400-\$1800

Circa 1970



380

Gallet, Switzerland, a mid 20th century large size “Multichron Yachting” wrist chronograph, 17 jewels, manual winding, rhodium plated Excelsior Park cal. 4 movement, in a stainless steel case with chamfered lugs, round pushers and black leather strap, arabic numeral silver dial with 45 minute register at 3:00, constant seconds at 9:00, and blued steel stick hands, 37mm

\$1000-\$2000

Circa 1950

**381**

Rolex Watch Co., Switzerland, a lady's ref. 6516 Oyster Perpetual Date wrist watch, 26 jewels, automatic winding, adjusted to 5 positions and temperature, cal. 1161 rhodium plated movement with lever escapement, in a stainless steel case with JB Champion Rolex bracelet, baton marker black dial with date aperture at 3:00 and baton hands, serial #1910429 (case), 31386 (movement), 25mm, with Rolex booklet and three Rolex spoons

\$800-\$1200 Circa 1965

382

Exacta Time Corp., Switzerland, a Babe Ruth wrist watch with box, one jewel movement with pin pallet escapement, paper dial with luminous arabic numerals and lithograph of Ruth at the center, luminous blued steel hands, and chrome plated case, together with it's baseball form plastic box, 32mm

\$400-\$600 Circa 1950

383

Lucien Piccard, Switzerland, a man's gold wrist watch with Liberty head dial, 17 jewels, manual winding, cotes de Geneve decorated gilt plate movement with lever escapement in a 14 karat yellow gold coin edge case with black leather strap, matte gold tone metal dial with polished Liberty head, diamond set six point star markers, and black stick hands, 32mm, 26.9g TW



381



383

384

Longines, Switzerland, a ref. 5253 "Christobal C" wrist watch with boxes and accessories, 21 jewels, automatic winding, cal. 624.2 rhodium plated movement with lever escapement in a round, stainless steel case, the rotating bezel with folding gnomon for establishing due north, roman numeral white dial with names of the eight major winds surrounding the movable center for determining true solar time, blued steel divider hands and red sun hand, serial #2521, 38mm, together with inner and outer boxes, papers, and glass Santa Maria in a transparent bottle, with stand

\$800-\$1200

Circa 1992

385

Longines, Switzerland, a ref. 989.5215 Lindbergh "Hour Angle" wrist watch, 25 jewels, automatic winding, cotes de Geneve decorated, rhodium plated cal. L989.2 movement with lever escapement, in a round, stainless steel case with rotating bezel, and hinged back, allowing observation of the movement, roman and arabic numeral metal dial with rotating center and black moon hands, serial #57710328, 37mm, with original boxes and a Longines jewelers counter display.

\$800-\$1200

Circa 1990



385



386

Thomas Tompion & Edward Banger, London, an early 18th century gold pair cased pocket watch, key wind and set, gilt full plate movement with verge escapement and steel three arm balance with reeded rim, the balance cock with symmetrical piercing and foliate engraving, the pierced foot and regulator plate similarly ornamented, Egyptian pillars, and ornamental screws and springs, in a 22 karat gold pair case, the later outer case with repousse ornament, and containing an equation of time watch paper from John Grant, the inner case with shutter for winding aperture, London hallmark, and date letter for the year 1703, later roman numeral white enamel dial with outer arabic five minute markers and blued steel beetle and poker hands, serial #3415, 53mm, 137.4g TW

Condition: CASE: Back of outer case with dent near hinge; Outer case with small hole behind pendant; Outer case with some tight splits and pinholes following contours of repousse, most easily viewed from the inside; Catch button dented; Catch re riveted to case; Rim with scratches at 1 - 2:00; Repousse with some wear; Inner case with some fine scratches; Minor denting from contact with outer case rim; Pendant reattached to case; Bow replaced; Precious metal content marked, tested. DIAL: An 18th century replacement; Minor scratches and a few hairlines. HANDS: Minor losses to blue. MOVEMENT PLATES: Fine scratches on plate; Minor marring at serial number; Some steel with minor oxide specks and some losses to blue; A bit dirty. MOVEMENT FUNCTION: Runs dial up; Dial down runs for 10 - 15 seconds; Staff good; Would benefit from service. Purchased by the consignor at Sothebys, London, March 18, 1974, lot 39, and included in Jeremy Evans inventory of Tompion's work in his book "Thomas Tompion at the Dial and Three Crowns", page 92.

\$7000-\$10000 Circa 1703





387

Charles Frodsham, London, a gold hunting cased fusee pocket watch with wind indicator, 20 jewels, key wind and set, gilt plate movement, with lever escapement, cut bimetallic balance, and gold timing screws in an 18 karat. yellow gold, reeded edge, engine turned hunting case with engraved presentation on gold cuvette, "Charles G. Ewing from his Employers Levison Bros. San Francisco, Jan. 1st 1867", with London hallmark and date letter for the year 1865 and maker's mark "JB" within an oval, roman numeral, single sunk white enamel dial with blued steel spade and whip hands, serial #03301, 54mm, 149.8g TW. Established in 1859, Levison Brothers was a jewelry company in San Francisco and were granted sole agency for the American Watch Co., Elgin, Howard, and Charles Jacot watches. Charles Grey Ewing (1835-1904), a native of Greenock, Scotland came to the US in 1851 and later became an importer of binocular microscopes.

\$2000-\$3000



388

Muirhead & Arthur, Glasgow, a late 19th century hacking center seconds pocket watch, 15 jewels, key wind and set gilt plate lever fusee movement with cut bimetallic balance in an 18 karat, yellow gold scalloped edge case with Chester hallmark and date letter for the year 1879, roman numeral, single sunk white enamel dial with gold spade and poker hands, serial #46464, 52mm, 129.4g TW

\$1600-\$1800



389

Tiffany & Co., New York, a late 19th century hunting case pocket watch 18 jewels, stem wind and set cotes de Geneve decorated nickel plate movement with counterpoised lever escapement and cut bimetallic balance with gold timing screws in an 18 karat, yellow gold hunting case, the front with engraved monogram, and the inside of the back cover engraved "Arthur Edward Childs", roman numeral, single sunk white enamel dial, blued steel spade hands, 52mm, 130.5g TW

\$1300-\$1600

Circa 1890



390

James Nardin, Locle, a gold quarter repeating pocket watch, 31 jewels, stem wind and pin set, cotes de Geneve decorated gilt bar movement with counterpoised lever escapement and cut bimetallic balance with gold timing screws, in an 18 karat, yellow gold, hinged back and bezel open face case with Jurgensen lips and maker's details engraved on gold cuvette, roman numeral, single sunk white enamel dial with plum colored steel Breguet style hands. serial #8994, 46mm, 93.1g TW

\$1200-\$1600
Circa 1870



391

Switzerland, a mid 19th century "Patent Thermometer Watch", 15 jewels, key wind and set, gilt movement with shaped plates and lever escapement in an 18 karat yellow gold, hinged back and bezel, engine turned and engraved open face case, engraved gold dial with two time chapters, one roman numeral, the other arabic, central sweep seconds, and mercury thermometer at bottom, with plum colored steel hands, 52mm, 98.4g TW

\$1000-\$1300
Circa 1860



392

Barraud & Lunds, London, a gold open face lever fusee pocket watch, 13 jewels, key wind and set, gilt 3/4 plate movement with lever escapement and cut bimetallic balance with gold timing screws in an 18 karat, yellow gold, hinged back and bezel open face case, with engraved cipher on rear cover and London hallmark with date letter for the year 1882, roman numeral, single sunk white enamel dial, gold spade and poker hands, serial #3/3265, 45mm, 86.5g TW, together with a gold filled watch chain and gold clad key

\$800-\$1200

393

George Graham, London, a mid 18th century silver pair cased pocket watch, 4 jewels, key wind and set, gilt full plate movement with cylinder escapement, three arm polished steel balance and cylinder with Graham's banking, balance cock with pierced and engraved foliate ornament and mask, the cock foot and regulator plate with foliate engraving, and square baluster pillars, later silver pair case with London hallmark and date letter for the year 1759, later roman numeral white enamel dial with arabic outer five minute markers, gold Breguet style hands, 50mm

\$800-\$1200
Circa 1745/1759



394

George Graham, London, a mid 18th century pocket watch movement, gilt, full plate movement with square baluster pillars, worm and wheel set up between the plates, pierced, engraved balance cock, diamond endstone with polished steel setting, steel three arm balance, cylinder escapement with brass escape wheel, steel cylinder with brass plugs and Graham banking, later arabic numeral white enamel dial and gold beetle and poker hands, with signed dust cap, serial #6463, repeated beneath the balance cock foot and beneath the minute wheel on the bottom plate, also scratched lightly into the cap, and beneath the dial, 36mm

\$700-\$900
Circa 1750



395

Longines, Switzerland, a type A-9 master navigation watch for the U.S. Army Air Corps, 21 jewels, stem wind and set cotes de Geneve decorated nickel plate cal. 21.29 movement with lever escapement and micrometric regulator in a plated base metal, screw back and bezel open face case with engraved ordnance department information on back cover and hack lever slide in the band, arabic numeral silver G.C.T. 24 hour dial with wind indicator and bold, blued steel hands, serial #5039418, 53mm

\$500-\$800
Circa 1940





396
Gabriel Leekey, London, an 18th century verge pocket watch with date, key wind and set, gilt full plate fusee movement with verge escapement, pierced and engraved two footed balance bridge and regulator plate, and square baluster pillars, roman numeral arcaded silver champleve dial with gold rosettes, arabic outer five minute markers, signed center with House of Stuart coat of arms, date aperture above 6:00, and gold hands, in a sterling silver repousse pair case with London hallmark and date letter for the year 1771, 50mm

\$400-\$600



397
Switzerland, for Jose R. Losada, London, a lady's diamond set enamel pocket watch, 10 jewels, key wind and set, gilt bar movement with cylinder escapement in an 18 karat, yellow gold, engraved, reeded edge hunting case with cobalt blue guilloche enamel, the front with diamond set fly, the back with diamond set flowers, and the cuvette engraved "Jose R. Losada 281 Regent Street London", roman numeral white enamel dial with plum colored Breguet style hands, with electroplated chain, 30mm, 23.4g TW

\$400-\$600
Circa 1860



398
Paul Ditisheim - Solvil, Switzerland, an early 20th century silver pocket watch with experimental balance, 16 jewels, stem wind and set, cotes de Geneve decorated nickel plate movement with lever escapement, and balance with cut, Guillaume style rim with two of the arms having bimetallic sections, in a sterling silver, hinged back and snap bezel, reeded edge open face case, roman numeral single sunk silver dial, and plum colored steel hands, with steel chain, serial #749943, 46mm

\$300-\$500
Circa 1920



399

Switzerland, for Hayden, Brother & Co., Charleston, South Carolina, an important mid 19th century pocket watch, 15 jewels, key wind and set gilt bar movement with lever escapement, in an 18 karat, yellow gold, hinged back and bezel engraved open face case, the back with a fine monochrome enamel portrait of John C. Calhoun, the image framed with black and white foliate enamel, and the cuvette engraved "Hayden, Brother & Co. Charleston, S.C.", roman numeral engraved gold dial depicting a monument, with buildings and mountains in the background, and gold spade and poker hands, 47mm, 83.4g TW

Condition: CASE: Very minor dent, back, at left of hinge; Cuvette with key scratches; Bezel and back snaps worn; Scratches and a few minor losses to frame enamel; Portrait with scratches and surface chip at top, center; Precious metal content marked. DIAL: Fine scratches and scuffs. HANDS: Replaced. MOVEMENT PLATES: Dusty; A few very fine scratches and scuffs on plate; Minor losses to plating; Click, ratchet wheel, and ratchet wheel bridge with minor oxide. MOVEMENT FUNCTION: Running order (winds, sets and ticks).

John C. Calhoun (March 18, 1872 - March 31, 1850) was a leading political theorist and politician, serving at both the state and national levels. He held seats in the House of Representatives, the Senate, and as seventh vice president of the United States. He was a staunch advocate for states rights and slavery, calling it a "positive good". The watch was made made shortly after Calhoun's death in 1850, as the partnership that operated under the Hayden, Brother & Co. name was active from 1852 to 1855. The image appears to be taken from the mezzotint engraving by Thomas Doney of Calhoun, from a daguerreotype.

\$8000-\$12000
 Circa 1850



400

L. Goddard & Son, Shrewsbury, Mass., an early 19th century American fusee pocket watch, key wind and set gilt full plate movement with verge escapement, pierced and engraved bell shaped balance cock, turned baluster pillars, and polished steel regulator in a silver pair case, with roman numeral white enamel dial and gold pierced spade hands, serial #336, 55mm

Condition: CASE: Dings and fine scratches; Shell on catch pusher worn through; Some rust on catch; Inner case with very fine scratches; Bow attached to pendant with straight pin; Hole in pendant with enlargement; Crystal with scratches; Bottom plate with extra dial foot holes which appear to have been made at the time of manufacture. DIAL: Minor scratches; Faint hairlines at 2 and 6:00; A more apparent crack and small loss at 9:00. HANDS: Minor bends. MOVEMENT PLATES: Dirty; Fine scratches on plate; Balance cock screw with minor oxide; Balance rim, regulator, and movement catch with spots of oxide; Tip of center arbor slightly shortened; Minute hand flush with top of cannon pinion, setting square inaccessible. MOVEMENT FUNCTION: Running order (winds, sets and ticks); Would benefit from service.

\$7000-\$10000

Circa 1815



401

John Cairns, Providence, RI. an early 19th century American pair cased fusee pocket watch, key wind and set, gilt full plate movement with verge escapement, turned baluster pillars, Tompion regulator with red wax filled engraving, and pierced and engraved balance cock with eagle, in a silver pair case, the outer containing watch papers from Providence watchmakers Joseph Brown, Franklin Richmond, and Isaac Hale, arabic numeral white enamel dial, and gold hands, with later stamped number 1641, 60mm

Condition: CASE: Very fine scratches on outer surface of case; Hinge a bit loose, and with minor misalignment; Outer case with slight gap at pendant and hinge when closed; Small area worn through on catch pusher; Inner case with very fine scratches and pin pricks; One segment of inner case hinge broken; inner case with minor gap at hinge when closed; Bow a poor replacement; Lacking crystal. DIAL: Minor loss at edge, 8:00. HANDS: Broken. MOVEMENT PLATES: Dirty; A few fine scratches on plate; Balance cock with split at pivot bushing. MOVEMENT FUNCTION: Will run with pressure on third wheel; Out of beat; Balance spring needs truing.

\$3500-\$5500

Circa 1800



402

Auburndale Watch Co., Auburndale, Mass., an "Auburndale Rotary" pocket watch, 19 size, stem wind and lever set nickel plate movement with lever escapement in a nickel, snap back and bezel open face case, roman numeral white enamel dial, blued steel spade and whip hands, serial #369

\$1600-\$2200
Circa 1880



403

American Waltham Watch Co., Waltham, Mass., a model 1899 "Riverside Maximus", 16 size, 23 jewels, stem wind and set, adjusted, ornately damascened nickel plate movement with lever escapement, diamond endstones, gold jewel settings, gold timing screws, gold wheel train and whiplash micrometric regulator, in a 14 karat, multicolor gold, faux box hinge, engraved hunting case with diamond set rear cover, arabic numeral, outer red 5-minute markers, single sunk white enamel dial with blued steel spade hands, serial #11076633, 111.5g TW

\$1200-\$1400
Circa 1900



404

D. Goddard & Son, Worcester, Mass., a mid 19th century silver cased fusee pocket watch, 7 jewels, key wind and set, gilt plate movement with Massey III lever escapement and polished steel balance, hack feature, and Harrison's maintaining power, in a sterling silver, hinged back and bezel sterling silver case, with Chester hallmark and date letter for the year 1850, roman numeral white enamel dial, and blued steel hands, serial #2076, 52mm

\$500-\$800



405

Hamilton Watch Co., Lancaster, Penn., a model 21 marine chronometer, 14 jewel, key wind and set fusee movement with straight line damascened nickel plates, spring detent escapement, large mono-metallic balance and helical balance spring, arabic numeral metal dial with wind indicator, black painted steel spade and poker hands, within a gimballed brass bowl, and contained in a three tier mahogany box with brass furniture and padded mahogany outer box with leather strap, serial #2E623, with a Hamilton chronometer rate log book

\$1200-\$1500
Circa 1940 9.25in x 12.75in x 10in



406

Thomas Mercer, London & St. Albans, an early 20th century two day marine chronometer, 11 jewel brass movement with spotted plates, Earnshaw's escapement, and freesprung bimetallic chronometer balance with cylindrical weights and helical balance spring, signed, roman numeral silvered dial with blued steel spade and poker hands, with lacquered brass, gimballed bowl and mahogany three tier box with brass furniture, the interior with repairer's labels, and with an outer dovetailed and padded mahogany box with leather strap

\$1200-\$1600
Circa 1920 9.5in x 12.75in x 9.5in



407

Victor Kullberg, London, an early 20th century British Navy boxed deck watch, 18 - 19 jewels, stem wind and pin set, adjusted, gilt plate going barrel movement with lever escapement, freesprung cut bimetallic balance with overcoil balance spring, diamond endstone, and gold timing screws, in a brass, screw back open face case, signed roman numeral, single sunk white enamel dial with blued steel spade and poker hands and sweep seconds, serial #9322, 54 mm, contained in it's original mahogany box, the lid with engraved ivory plaque, and interior with brass cannister to receive case, and card from the Greenwich Observatory Chronometer Dept.

\$1000-\$1500
Circa 1915 2.375 x 4in x 4.625in

408

Hamilton Watch Co., Lancaster, Penn., model 22 chronometer watch for the U.S. Navy, 35 size, 21 jewels, stem wind, stem/pin set, adjusted to 6 positions and temperature, straight line damascened nickel plate movement with lever escapement and micrometric regulator, arabic numeral silvered dial with wind indicator and black steel spade and poker hands, the timepiece contained in a mahogany box with viewing aperture, and with outer mahogany box, serial #2F11793, together with a desk stand for the timepiece.

\$900-\$1200

Circa 1941 - 43



408

409

Newsome & Co., Coventry, a late 19th century English naval freesprung deck watch, 18 - 19 jewels, stem wind and pin set, adjusted, gilt plate going barrel movement with lever escapement, freesprung cut bimetallic balance with double overcoil balance spring, diamond endstone, and gold timing screws, in a sterling silver, hinged back and snap bezel open face case, the rear cover engraved "H.S.2" with broad arrow mark, and with London hallmark and date letter for the year 1896, roman numeral, single sunk white enamel dial with blued steel spade and poker hands and sweep seconds, serial #134947, 60.7mm, contained in it's original mahogany box, the lid with engraved ivory plaque, and interior with card from the Bradford on Avon chronometer depot.

\$800-\$1200

2.5in x 3.75in x 4.625in



409

410

Elgin Watch Co., Elgin, Illinois, a feesprung Father Time deck watch with wind indicator, 18 size, 21 jewels, stem wind and lever set, adjusted, damascened nickel plate movement with lever escapement, Guillaume balance, gold jewel settings and gold timing screws, arabic numeral, double sunk white enamel dial with spade and poker hands, with gimballed brass bowl, and contained in a three tier mahogany box with key, serial #21869068

\$500-\$700

Circa 1920 5.25in x 5in x 5in



410

411



411

Henry Frodsham, London, a mid 19th century deck watch, 19 jewels, key wind and set, gilt plate movement, with lever escapement, and cut bimetallic balance with gold timing screws in a brass case with screw bezel, roman numeral silvered dial signed "Henry Frodsham Eleve of Parkinson & Frodsham, Change Alley, London", gold spade and poker hands, serial #46267, 75mm

\$500-\$700

Circa 1850

412



412

Parkinson & Frodsham, London, a two day marine chronometer bowl and movement, ten jewel fusee movement with bimetallic chronometer balance and blued steel helical balance spring, signed roman numeral brass dial with blued steel hands, and contained in a later lacquered brass bowl, now fitted with break circuit mechanism, and configured to send signals at one second intervals, serial #2948

\$500-\$700

Circa 1850

413



413

S. Smith & Son, London, a late 19th century English deck watch, 18 - 19 jewels, stem wind and pin set, adjusted, gilt plate going barrel movement with lever escapement, cut bimetallic balance and "Strand Watch" style dust cap in a sterling silver, hinged back and snap bezel open face case with London hallmark and date letter for the year 1905, roman numeral, single sunk white enamel dial with blued steel spade and poker hands and sweep seconds, serial #85c120, 53 mm, contained in a three tier, satin and velvet lined mahogany box

\$500-\$700

2.375in x 4in x 4.625in



414

LeCoultre, Switzerland, a good art deco style ref.172 desk clock, round, chrome plated case with cylindrical feet, glass dial with painted arabic numerals, gold painted hands, and 16 jewel gilt plate movement with lever escapement and damascened barrel

\$400-\$600

Circa 1950 7.75in x 7.375in x 2in



415

Switzerland, an early 20th century desk clock with triple calendar, moon phase, and enamel case, the 950 silver case with pale blue gray guilloche enamel with narrow white borders, the back with strut and hinged ring for hanging, arabic numeral white enamel dial displaying the day date and month, the seconds bit with moon phase display at 12:00, blued steel spade and poker hands, and 8 day time-piece movement with lever escapement and cut bimetallic balance with Breguet overcoil hairspring

\$400-\$600

Circa 1920 3.875in x 3.875in x 1.25in



416

Angelus, Switzerland, an unusual globe form desk compendium, the round, gilt base supporting a lucite ring with gilt frame and ornamented with signs of the zodiac, the hollow center containing a rotating globe, the orb with lines for longitude and latitude, the oceans blue green, and the land masses gilded, and with clock, barometer, hygrometer, and thermometer, all with silvered dials, and 8 day movement with lever escapement

\$300-\$500

Circa 1960 8.25in x 7.25in x 4in

417



419



417

Girard Perregaux, Switzerland, a mid 20th century desk or table clock with electric remontoire, gilt, trapezoidal case with sloping front, and decorated with rows of flat topped pyramids, signed, silvered baton marker dial with dauphine hands and seconds at 6:00, 15 jewel spotted nickel plate Reform movement with lever escapement and solenoid, rewinding the spring at 160 second intervals

\$300-\$400

Circa 1960 2.25in x 5in x 6.5in

418

Gubelin, Switzerland, a good mid 20th century art deco style desk clock, the gilt case with footed, stepped rectangular base with rounded ends, the case consisting of three clustered tubes with gently rounded top, the center tube slightly elevated, matte gold dial with dart markers and dauphine hands, and 8 day timepiece movement with lever escapement

\$300-\$500

Circa 1950 5.75in x 8in x 2in

419

Switzerland, for Tiffany & Co., a mid 20th century desk compendium, the gilt, tripartite case with barometer, clock, and thermometer, all with silvered dials and bevelled glasses, the 8 day, 15 jewel Angelus alarm clock with arabic numeral and dart markers, luminous gilt hands, and date aperture at 3:00, fixed to a shaped base, serial #129086

\$300-\$400

Circa 1965 3.25in x 8.25in x 2in

418





420
James McCabe, Royal Exchange, London, a good hour repeating giant carriage clock, the gilt case with thick bevelled glasses, decorative, canted, projecting corners on a conforming molded base, and surmounted by a stepped top with reeded, Anglaise style carrying handle, signed, roman numeral, dead silvered dial with seconds at 12:00, and blued steel fleur de lis hands, and signed, 8 day, two train fusee movement with 15 jewel lever platform, and striking the hours on a gong, together with its original, green baize lined, brass bound mahogany case with flush folding, campaign style carrying handle

Condition: case regilded, and with minor, localized spotting, left side glass with minor loss at lower left, small ding at back of top molding, stepped top with gilding of a slightly different color, case back with fine graining, dial and surround with areas of slight discoloration, hands good, movement oily, running, striking and repeating, striking not synchronized with hands, box with minor dings and scratches, escutcheon replaced, lock bolt has chipped case, shutter an old replacement

\$12000-\$18000
Circa 1855



421
Drocourt, Paris, good later 19th century rococo style grand sonnerie carriage clock, the gilt case replete with scrolls, acanthus leaf, floral festoons, cornucopias, and putti, the sides and top with pink framed enamel panels featuring young women and putti in landscapes, the base with smaller, oval panels with cottages in landscapes, the front with child picking roses, the roman numeral dial also with ornament matching the exterior, and with subsidiary alarm chapter and blued steel hands, signed 8 day, three train movement with lever platform, striking grand or petit quarters, and repeating the last hour and quarter on demand

Condition: a bit dirty, gilding with minor wear, panels good, dial and hands good, movement dirty and with minor tarnish, not running, staff appears to be good, strikes just before the quarters, striking and repeating functional, but quarter rack not falling completely, needs service

\$6000-\$8000
Circa 1870 9.5in x 5.75in x 5in



422

Chles. Oudin, Palais Royal, Paris, a large and extremely ornate rococo style repeating carriage clock with base, the case with a riot of rococo ornament including putti engaged in various activities, C scrolls, framed cartouches, shells and flora, on Neptune and mermaid form feet, and resting on a separate, similarly ornamented, conforming base with dolphin feet, signed roman numeral white enamel dial with blued steel hands and subsidiary alarm chapter, 8 day three train movement with lever platform, striking the hour and half hour on a bell, and repeating the last hour on demand

\$3000-\$4000

Circa 1860 11.25in x 7in x 6.5in



423

Bourdin, a Paris, a good mid 19th century grand sonnerie carriage clock, the gilt, engraved corniche case with four bevelled glasses, faceted carrying handle, and case back with shutter allowing access for winding and setting, signed roman numeral white enamel dial with seconds below 12:00, subsidiary alarm chapter, gilt, engraved mask, and blued steel Breguet style hands, 8 day three train movement with duplex platform, sounding grand sonnerie quarters on two bells

\$2500-\$3500

Circa 1850 7.25in x 4in x 3.25in



424

Drocourt, Paris, a good late 19th century enamel paneled grand sonnerie carriage clock, engraved, gilt Gorge case with carrying handle and sides with blue and gold bordered polychrome enamel panels, the right with a young woman cradling a small child, the left with a young woman representing Spring, the roman numeral dial also with matching border surrounding a scene with sky and indistinct landscape, subsidiary alarm chapter, and blued steel hands, signed three train movement with lever platform, sounding petit or grand quarters on two gongs, and repeating the last hour and quarter on demand

\$2500-\$3500

Circa 1860 6.75in x 3.875in x 3.375in



425

Leroy, Paris, a good late 19th century quarter repeating carriage clock, gilt Gorge case with C scroll, foliate, and floral engraving on a matted ground, five bevelled glasses, and engraved, folding handle, signed roman numeral white enamel dial with subsidiary alarm chapter, and blued steel Breguet style hands, and 8 day, three train movement with lever platform, striking on two bells, and repeating the last hour and quarter on demand, with associated travel case

\$1000-\$1500

Circa 1885 6in x 3.5in x 3in



426

France, a late 19th century carriage clock with polychrome enamel dial, the case with five beveled glasses, stepped, molded base and top, corners with columns having foliate capitals and bases, the mid point of each also with foliate cluster ornament, and top with folding handle, roman numeral white enamel dial, the chapter ring surrounded by a landscape with birds, vegetation and floral ornament, the center featuring two birds and cherry blossoms, blued steel spade hands, and 8 day, two train movement with lever platform, striking the hour and half hour on a gong and repeating the last hour on demand

\$800-\$1200

Circa 1890 8in x 4.25in x 3.75in



427

Matthew Norman, Switzerland, a 20th century repeating carriage clock with calendar and moon phases, patinated Anglaise style case with five beveled glasses, roman numeral silver dial with dead silvered ground, subsidiary dials displaying day and date, alarm chapter below 6:00, and moon phase display above 6:00, blued steel Breguet style hands, 8 day three train movement with lever platform, striking the hour and half hour on a gong, and repeating the last hour on demand

\$800-\$1200

Circa 1970 7.25in x 4in x 3.5in



428
Germany, an amusing late 19th century automated clockwork picture featuring a clockmaker and his family, the lithographed scene with hand coloring showing clockmaker using bellows to clean a movement, raising his head, and opening his mouth, his wife raising her head and nodding, the child at the right repeatedly shaking a watch and holding it to his ear, and then striking it on an anvil, the child at the left with hammer and raising his head and nodding, the child at the back raising his head and starting the pendulum on a hanging clock, and two other hanging clocks with moving pendulums, in a red painted frame with box enclosing the movement, with cams and pulleys that work to create the motion

Condition: mechanism complete, the motions working with the exception of the child at left, the wire controlling his actions binding in the hole due to oil that has run from the movement, child at left with crease across the top of his head, scene with minor stain at upper left, frame originally with yellow lacquered silver leaf, loose corners at upper left and right, paint with minor losses

\$2000-\$3000

Circa 1890 10.25in x 13.75in x 4.5in



Royal Observatory, Cape of Good Hope (now Capetown), South Africa

429

Sigmund Riefler, Munich, an early 20th century type D observatory tank regulator, the jeweled, type A movement with spring impulse escapement, electric remontoire, knife edge suspension resting on polished agate pads, and a 60 tooth wheel mounted to the escape arbor, with switch for sending signals at one second intervals, the silvered astronomical dial with blued steel hands and engraved "S. Riefler Munchen No. 150 1905", type J1 seconds beating pendulum with invar rod and cylindrical bob, serial #730, all contained within a copper cylinder covered with a bell jar, and suspended by a heavy cast iron bracket, with control panel. This clock was originally installed at the Royal Observatory, Cape of Good Hope (now Capetown), South Africa.

Condition: tank with scratches, tank plugged at original location of vacuum valve, tank fitted with six terminals, bell jar with rim chip, clock mounting frame with losses to gilding, dial with minor dirt, hands good, top of contact adjusting screw with solder, movement good, pendulum bob with small spot of corrosion, iron bracket now painted green and with white paint speckle, lacking microscope.

Sigmund Riefler (8/9/1849 - 10/21/1912) was the son of Clemens and Magdalena Riefler, and was responsible for the advancements that brought the Riefler firm to the forefront of precision timekeeping. His innovations include the spring impulse escapement, which isolated the pendulum from direct contact with the escapement and provided a more equal impulse, a scientific and mathematical approach to the improvement of compensated pendulums, which reduced the reliance on an empirical, inexact approach to the refinement of design, and finally, his electric remontoire, which eliminated the need for much of the wheelwork, with a resultant reduction in friction and irregularities in power transmission to the escapement. Riefler's late 19th century regulators significantly improved the accuracy of the pendulum clock, and became the standard for observatory use until surpassed by the Shortt - Synchro-nome free pendulum clock, c1920.

\$40000-\$60000

Circa 1907 53.5in x 15in x 14.5in



430

Peyer & Favarger, Neuchatel, a very rare early 20th century precision tank regulator, the movement attached to three rods anchored to the top of the case and with signed silvered plaque engraved "Peyer Favarger & Cie. Successeurs de M. Hipp Neuchatel (Suisse)", the electromagnetically impuled pendulum with polished rods and lacquered brass components, jeweled Hipp toggle, nickel plated steel mercury jar, and contacts for sending signals at one second intervals, all contained in a glass cylinder with brass top and bottom, and hanging from a cast iron bracket, together with a slave clock with turned rosewood bezel, and matte silvered astronomical dial with blued steel hands signed "M. Hipp Neuchatel"

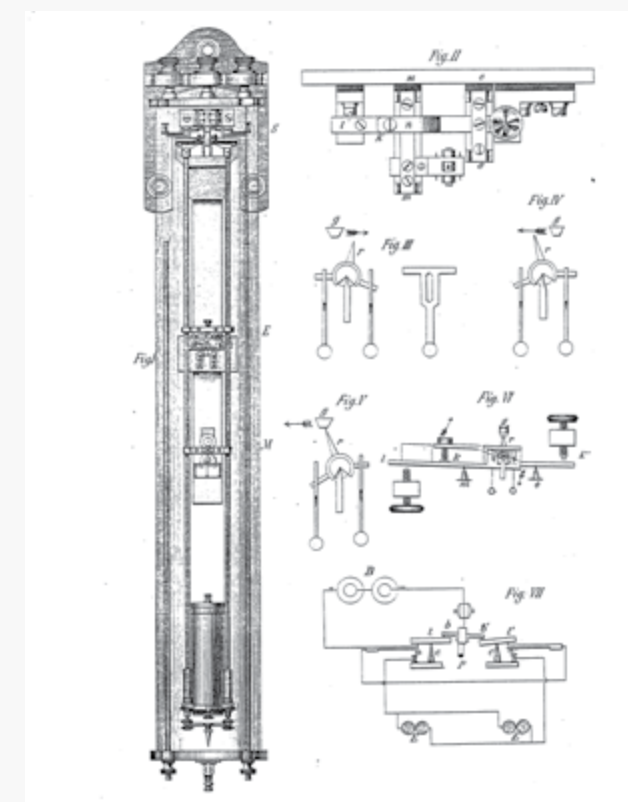
Condition: top with dirt and tarnish, top mounted terminals with broken insulating stabilizers, nuts securing clock to bracket with damaged knurling, iron mounting bracket with some rust at lower left, brass movement and pendulum components in old and possibly original lacquer, mercury jar with fine spotting and very minor loss to plating, engraved plaque with losses to silver, glass cylinder good, slave dial with minor discoloration to silvering, hands good, movement good

Electric clock pioneer Matthaus Hipp developed the design for this regulator between 1877 - 1884, for use in observatories and other environments where precision timekeeping was required. The first of its type was shown in 1881, at the International Exhibition of Electricity in Paris, where it received a gold medal. The clock was then delivered to the Neuchatel Observatory, where it underwent carefully controlled testing, and was subsequently purchased for their use. Following installation and adjustment, the daily variation was found to be between .019 - .035 seconds.

A. DePeyer and A. Favarger were engineers who worked for Hipp, and assumed control of the company following Hipp's retirement in 1889. This regulator and slave were illustrated in their catalog of 1890, the regulator priced at 3200 Swiss francs, the slave 180.

\$35000-\$55000

Circa 1900 59.5in x 10.875



Engraving showing the regulator and principles of its operation from the address to the Neuchatel Natural Sciences Society, March 6, 1884, by Dr. A. Hirsch, director of the Neuchatel Observatory



431

Sigmund Riefler, Munich, an early 20th century type B astronomical regulator, the case with tubular nickel corners, mahogany top and bottom, three decoratively frosted glasses, and nickel plated adjustable beat scale, hinged to a wooden frame and panel back board, and cast iron, rear mounted movement mounting and leveling bracket, silvered roman and arabic numeral astronomical dial with blued steel hands, signed "Dr. S. Riefler Munchen No. 341 1913", jeweled type A movement with spring impulse escapement, electric remontoire, knife edge suspension resting on polished agate pads, and a 60 tooth wheel mounted to the escape arbor, with switch for sending signals at one second intervals, type Jsch seconds beating pendulum with invar rod, barometric compensation, and tray for fine timing weights, serial #1734, together with it's oak cased, hanging control panel.

Condition: case good overall, losses to nickel plating on tubes, iron leveling bracket with paint, and now mounted to an aluminum plate and plywood board, mounting bracket with minor losses to paint, movement back plate with fine spotting and some losses to gilding, dial with some darkening, particularly around mounting screws, minor losses to lacquer at upper right, hour hand with small spot of oxide, pendulum bob with minor, fine spotting, pendulum lacking beat scale pointer, barometric compensation indicator with minor oxide, control panel case in an old finish, with dirt and minor paint spatter.

Sigmund Riefler (8/9/1849 - 10/21/1912) was the son of Clemens and Magdalena Riefler, and was responsible for the advancements that brought the Riefler firm to the forefront of precision timekeeping. His innovations include the spring impulse escapement, which isolated the pendulum from direct contact with the escapement and provided a more equal impulse, a scientific and mathematical approach to the improvement of compensated pendulums, which reduced the reliance on an empirical, inexact approach to the refinement of design, and finally, his electric remontoire, which eliminated the need for much of the wheelwork, with a resultant reduction in friction and irregularities in power transmission to the escapement. Riefler's late 19th century regulators significantly improved the accuracy of the pendulum clock, and became the standard for observatory use until surpassed by the Shortt - Synchronome free pendulum clock, c1920. This clock and the control panel are illustrated in volume three of Derek Robert's "Precision Pendulum Clocks", pages 144 - 45.

\$25000-\$35000

Circa 1914 59.75in x 17.75in x 8.5in



432

F.M. Fedchenko, Moscow, a mid 20th century type AChF- 3 precision tank regulator, the electromagnetically impulsed, temperature compensated pendulum with invar rod and isochronous suspension, contained in a blue painted steel cylinder with front mounted beat scale microscope, the right side with vacuum valve, the left with wiring transmitting signals to slave clocks, and sealed at both ends by glass bell jars, and supported by a cast iron bracket, together with two slave clocks, centigrade thermometer, wiring and controls, and instruction manual

Condition: glass good, tank with minor dirt, bracket with minor losses to paint, suspension spring and contact spring with minor kinks, pendulum with incorrect bob, rod with patch of rust, acrylic glasses on slave clocks with checking, manometer lacking oil tube, condition of electronic components unknown

\$20000-\$30000

Circa 1974 63in x 16in x 14in



433

Waltham Clock Co., Waltham, Mass., custom hanging jeweler's regulator in a mahogany case with deeply carved top surmounted by large central finial, joined barley twist columns flanking lower door, roman numeral painted metal dial with diamond hands and subsidiary seconds, 8 day, time only movement with nickel plated, three jar mercury pendulum and driven by a brass weight

Condition: retains a good original finish with minor nicks and scrapes and a minor repair on crest, tip of finial is broken; original dial with minor deterioration and losses at mounting screws, arbors and perimeter; suspension spring broken but present; original hands, weight and pendulum. This is an excellent original example of a very rare model by Waltham Clock Co.

\$8000-\$12000

Circa 1905 82in x 22.5in x 11.5in



434

Zenith Watch Co., Switzerland, an eight day bow front astronomical regulator, glazed, semicircular mahogany case with two doors, signed silvered astronomical dial with blued steel hands, movement with adjustable, jeweled pallets, invar pendulum rod with cylindrical bob and auxiliary compensation, and driven by a small, cylindrical brass weight, serial #14

Condition: case with dings and scratches, backboard with tight split, dial with localized spotting and darkening, minute hand with very minor darkening, pendulum bob with minor oxide, crutch pin replaced, weight good.

\$8000-\$12000

Circa 1920 53in x 12.75in x 9in



435

Favag SA, Switzerland, a mid 20th century electromagnetic seconds beating "Crystal" master clock, the case with marble back and glazed, bow front door with aluminum frame, arabic numeral silvered dial with seconds at 6:00, and black baton hands, hinged movement with sixty tooth count wheel sending signals at one minute intervals, invar pendulum with auxiliary compensation and jeweled catch for Hipp toggle, the pendulum suspension with lever closing contacts at one second intervals

Condition: case good, lacking aluminum shield for electronics above movement, dial with minor spotting, hands good, movement appears to be complete, solenoid cork insulating block with damage, solenoid loose, pendulum good, functionality unknown

\$1500-\$2500

Circa 1950 54.75in x 14.125in x 7in



436

Waterbury Clock Co., Waterbury, Conn., "Regulator No. 70" hanging jeweler's regulator in a rectilinear mahogany case with scalloped decoration above dial, 12in roman numeral white enamel dial with sweep seconds, 8 day, time only movement driven by a brass weight with pinwheel escapement and gridiron pendulum

\$2000-\$3000

Circa 1917 82in x 26.25in x 10.75in



437

New Haven Clock Co., New Haven, Conn., "Regulator No. 10" hanging jeweler's regulator in an oak case with carved top and two turned drops, roman numeral white enamel dial with steel spade hands and sweep seconds, 8 day, time only movement driven by a brass weight with cylindrical pendulum bob

\$1500-\$2000

Circa 1895 77.5in x 24in x 11.5in



438

Ansonia Clock Co, New York, NY, standing jeweler's "Regulator No. 11" in a mixed wood case with burl walnut highlights and Jenny Lind crest, large 15in roman numeral silvered dial with sweep seconds, 8 day, time only movement driven by a brass weight with compensated three jar mercury pendulum

Condition: case has been refinished; silvered dial with spotting on it; original pendulum and weight; mercury included (requires hand delivery); Ansonia's most impressive regulator, rare hard to find model

\$8000-\$12000

Circa 1895 105in x 37in x 14.75in



**SCHMITT
HORAN & CO.**

Seeking Fine Consignments



Sold \$33,600

June 12, 2022

A fine and rare
mid 19th century hour
repeating carriage clock
by James McCabe

Contact Us for a
Confidential Appraisal

sales@schmitt-horan.com
603.432.2237



439

Austria, a good month going art nouveau style standing Vienna regulator, the case with molded base below a hinged door, the panel with florid, naturalistic floral and foliate carving, the trunk door with carved tracery echoing the base, and flanking carved brackets, the top with door having a round, molded aperture, fully glazed sides, and projecting cornice with carved crest, arabic numeral silvered dial with a silvered, Gibbosesque female figure at the center, and fancy, pierced steel hands, the pendulum also with a silvered female figure among stylized bellflowers, 30 day timepiece movement with dead beat escapement and maintaining power, and brass clad weight, also with a silvered female figure

\$2500-\$3500

Circa 1900 93in x 26.5in x 12.5in



440

Austria, a good late 19th century month going standing Vienna regulator, the base with molded top and bottom, molded panel with carved, central roundel, the corners with turned quarter columns, and on flattened ball feet, the trunk with molded, glazed door having turned and carved columns with vasiform bases, and round, molded dial viewing aperture with carved spandrels and flanking turned, carved columns below a denticulated frieze and molded cornice, and surmounted by a carved crest, roman numeral silvered dial with engraved, gilt mask and center, fancy pierced steel hands, month going movement with dead beat escapement and maintaining power, pendulum with engraved, gilt bob and wooden rod, and gilt, engraved weight

\$2000-\$3000

Circa 1890 93.5in x 26in x 13.5in



441

Burgfeldt & Co., New York, NY chiming hall clock in mahogany case with arch topped hood with turned full columns flanking dial and fretwork sides over trunk with arch topped beveled glass trunk door and beveled glass sides flanked by turned full columns all resting on base with compressed ball feet, brass dial with arabic numeral silvered chapter ring, cut brass corner spandrels and dial center, moon phase, strike / silent and tune selectors, 8 day, three train movement driven by three brass weights chiming the quarter hours on nine tubular bells, signed "ELITE" Germany

\$2000-\$3000

Circa 1900 92in x 28in x 18in



442

American tall clock, mid-Atlantic region, in a mahogany and mahogany veneer case with broken arch top, brass rosettes and finials, fluted full columns flanking hood door over trunk with tombstone crotch mahogany door and diamond escutcheon flanked by reeded quarter columns, resting on crotch mahogany base with flared feet, unsigned roman numeral painted metal dial with moon phase, date calendar, subsidiary seconds and fancy multi-circle hands, 8 day, time and strike on bell, weight driven movement with cutout back plate

\$1500-\$2500

Circa 1830 94in x 21.5in x 11.5in



443
 Waltham Clock Co., Waltham, Mass., "No. 986" chiming tall clock, in a mahogany case with dome top, beveled glass front and sides, composite brass dial, silvered chapter ring with applied brass arabic numerals, Westminster / Whittington / Oxford / Silent tune selector and strike / silent selector, moon phase, and cast brass center, 8 day, three train movement driven by three brass weights and chiming on nine tubular bells, signed Waltham Clock Company

\$900-\$1300
 Circa 1922 76in x 25.25in x 15.25in



444
 Pennsylvania, an attractive, mid 19th century 8 day tall clock, the walnut case with frame and panel bottom with central, turned roundel and molded bracket base, the trunk with deep, transitional cavetto moldings at top and bottom, and thumb molded break arch door, the bonnet with slender, turned columns, the sides with glazed viewing apertures, and pedimented crest with turned finials, roman numeral white painted dial with floral ornament and concentric date display, steel Black Forest hands, and 8 day, two train movement with wooden plates, the weights with tin shells

\$800-\$1200
 Circa 1840 100in x 19.75in x 11in



445
 Elmer O. Stennes, Weymouth, Mass., dwarf tall clock in a Roxbury style mahogany case with satinwood inlay, inlaid fans on trunk and base framed by cross banding, fretwork crest over reeded full columns with satinwood stop fluting flanking hood door, three brass finials, case stamped "2" and "MCIP", roman numeral painted metal dial with maker's signature and rocking ship, 8 day, time, strike movement with Westminster chime on eight rods, and brass cylindrical pendulum

\$1700-\$2500
 Circa 1965 61.5in x 13.75in x 8in



446
 England, unsigned dwarf tall clock in a solid mahogany case with broken arch fretworked top, full and quarter fluted columns flanking hood, slender trunk, quarter columns with brass capitals and bases flanking trunk door, all resting on bracket feet, brass dial with roman numeral silvered chapter ring, moon phase, four bell / eight bell selector, 8 day, three train, weight driven movement striking quarter hours on a nest of eight bells and hours on a cathedral gong

\$1200-\$1600
 Circa 1895 80in x 15in x 11in



447
Probably Vienna, an unusual, large, late 19th century Austro Hungarian ivory and enamel table clock, the architectural case with ivory moldings and veneers, the base with a full width drawer, the corners with blue enameled columns ornamented with spiraling floral and foliate vines and Corinthian capitals below urn finials, and surmounted by an enamel dome with figural finial, the polychrome panels with figures in arcadian landscapes and including many putti, and characters from Greek mythology, each with a plain, conforming gilt frame, the larger panels with corner rosettes, and others trimmed with gilt mounts, arabic numeral enamel dial with center decorated to match the panels and gold plated hands, the inner surface of the back door with mirror, the interior with mirrored flap above two drawers, also with decorative enamel panels, and 8 day, two train movement striking on a gong

Condition: good overall, with minor flaws and losses, separation at molding joints, a few panels with minor damage to enamels, some frames a bit loose and with losses to fasteners, rear right column with minor damage to enamel, rear left with minor losses and repair, enamel at top of dome with minor losses, mirrors with cracks, dial with hairline at edge, 2:00, and scratch at 6:00, movement dirty, platform replaced, running and striking

\$10000-\$15000 Circa 1880 23in x 13.5in x 13.5in



448
Jean Eugene Robert Houdin, Paris, a good swinging mystery clock with glass dial, the gilded spelter, standing female figure on an onyx plinth supported by a gilded base with scroll feet, her right arm held aloft and supporting the swinging timepiece, the roman numeral, bevelled edge glass dial with gilt pierced and engraved hands atop a bimetallic grid-iron style pendulum terminating in a blue sphere and drop, the orb mounted with gilt stars and cipher, and containing an 8 day brass timepiece

Condition: dirty, gilding with some losses, figure lacking right pinky, nickel plating on rod supporting clock and pendulum with losses, dial with bruise and small chip at edge above 12:00, dial numerals with minor losses, hands good, motion work good, blued screws securing dial clamps to pendulum with rust, blue sphere refinished, movement ticking, would benefit from service and adjustment

\$10000-\$15000
Circa 1870 25in x 7in x 8.25in



449

Andre Romain Guilmet, Paris, an unusual crystal regulator with mercury torsion pendulum and helical spring, the gilded and silvered brass case with molded base and top, and frames containing beveled glasses, roman numeral white enamel dial with outer arabic five minute markers and fancy gilt hands, two train pendule de Paris movement with Guilmet's mark, his crank and stirrup escapement, and counting the hours on a bell, the pendulum with cylindrical cage containing three mercury vials, and three polished steel columns with turned brass ornaments, finials and drops, arranged symmetrically around a polished helical spring, and suspended from a bimetallic rod concealing a torsion suspension spring, providing a stable connection and support between the rod and bob

Condition: case dirty and with tarnish, lacking most of its original gilding and silvering, glasses good, dial with a few minor scratches, otherwise very good, hands good, movement good, running and striking, pendulum with good gilding, steel components with minor oxide

\$4000-\$6000

Circa 1890 14.25in x 7.75in x 5.75in



450

Cronier, a Paris, a late 18th century lyre form mystery clock, the elliptical white marble base on gilt feet and with gilt classical mounts, supporting a cast lyre frame ornamented with acanthus and beads, and surmounted by a large gilt sunburst with Medusa mask, above a floral festoon with flanking medallions and pendant drops, arabic numeral white enamel dial signed "Cronier a Paris", with fancy pierced and engraved hands, brass, two train movement of two week duration with recoil escapement, light wheel work having four and five spoke crossings, and striking the hour and half hour on a bell, the pendulum with gridiron style rod and the bob with a ring of cut paste stones, oscillating just in front of the dial

Condition: marble with minor chip at right, and one smaller at back, gilding very good, dial with minor short crack and tiny chips at right barrel arbor, dial with hole at 12 corresponding to holes in the movement for a regulation rod, hands good, movement ticks and strikes, pendulum suspension bracket replaced

\$4000-\$6000

Circa 1790 23in x 9.5in x 5in



451

Dumoulinneuf, a Paris, a rare and extremely decorative annular mantel clock, the stepped, molded, griotte marble base with bow front and incurved corners, gilt quarter round transition moldings and six gilt feet, all supporting a patinated bronze sphere set with gilt, three dimensional stars, hung with floral garlands, and surmounted by a large, gilt eagle with outspread wings, silvered dial rings with roman hours and arabic minutes, the time indicated by a bowknot suspended arrow, 8-15 day time and strike movement with lever platform, counting the hours on a bell, movement signed

\$3000-\$5000

Circa 1890 17.25in x 12in x 8.25in



452

France, a good late 19th century figural conical pendulum clock, on a turned griotte marble base with plaque engraved "Abeille par J. Causse", supporting a patinated spelter winged female figure with tulips, her right hand reaching for a flower and the left held aloft and holding a suspension with three chains attached to a spherical blue timepiece with stylized roman numerals, fancy gilt hands, and containing an 8 day timepiece movement, the continuously rotating escape pinion with lever bearing on a rod extending from the suspension, and causing the clock to trace a conical path

\$2500-\$3500

Circa 1890 27.5in x 8.5in

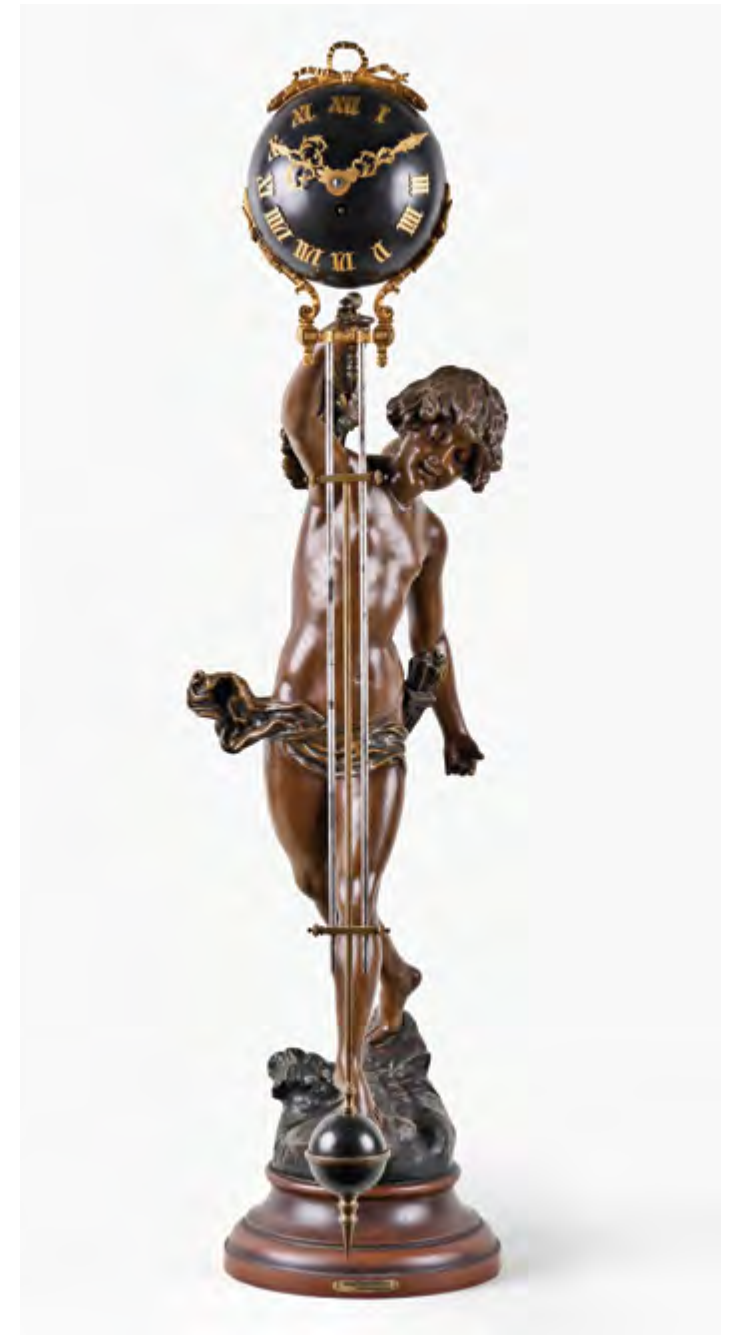


453

Andre Romain Guilmet, Paris, a late 19th century swinging mystery clock with crank and stirrup escapement, the alabaster case on gilt toupie feet, the molded base with quarter round gilt molding and central scroll and laurel mount with mask, the sides with gilt, ornamental drops, and molded top, also with gilt, quarter round trim, surmounted by a gilded female figure, her left hand held aloft, and suspending the pendulum with bob having a thick, bevelled glass insert, and impulsed through the nearly imperceptible movement of the base on which she stands, roman numeral alabaster dial with egg and dart bezel and gilt spade hands, 8 day time and strike movement with crank and stirrup escapement, the back plate with Guilmet's mark and numbered 2012

\$2000-\$3000

Circa 1885 24.5in x 10.75in x 7.25in



454

France, a large, late 19th century swinging mystery clock, the round, molded base with plaque marked "Dans l'Hesitation par Geo. Maxim" and surmounted by a winged male figure, a quiver at his waist, and right hand held aloft and supporting the swinging compound pendulum, the 8 day timepiece movement contained in the black painted, upper sphere, with gothic roman numerals, and fancy pierced and engraved hands, above the three rod, gridiron style pendulum with spherical painted bob

\$1800-\$2500

Circa 1890 40.5in x 9.5in



455

France, a large figural swinging mystery clock, on a faux griotte turned plinth, surmounted by a patinated spelter, standing male figure signed "Ch. Ruchot", with wheel at his feet, a hammer in his left hand resting on an anvil, and his right hand held aloft, supporting the swinging compound pendulum, the 8 day timepiece contained in the patinated, upper sphere, with Gothic roman numerals and Louis XV style hands, above the three rod, gridiron style pendulum with patinated bob

\$1500-\$2000

Circa 1900 38.5in x 10in



456

André Romain Guilmet, Paris, for E. Guerrin, Chaumont, a late 19th century balancier circulaire or conical pendulum timepiece, the signed, 8 day, time only, spring driven movement contained in a black painted sphere with retailer's signature, gilt brass roman numerals, brass hands, and supported by a cast, scroll and leaf ornamented tripod frame with adjustable feet, the pendulum suspended at the top of the frame, and propelled by a constantly rotating pinion with driving lever, on its original gilded and ebonized wooden base

\$1200-\$1500

Circa 1890 15.75in x 6.5in x 5.75in



457

France, a good, later 19th century figural table clock, the base with incurved corners and toupie feet, and supporting a short column with gilt laurel ring and bowknots suspending floral festoons and drops, surmounted by three putti with arms raised, supporting a patinated sphere with gilt stars, roman numerals, arrow form hands, and containing an 8 day, two train pendule de Paris movement, striking on a bell

\$2000-\$3000

Circa 1880

458

Bourdin, a Paris, a good mid 19th century mantel clock with calendar, the black slate, break front case with molded top, base, and corners, and surmounted by a patinated figure of a gaunt hound, signed P.J. Mene, gilt, rectangular bezel with thick bevelled glass, roman numeral white enamel dial with seconds at 12:00, blued steel Breguet style hands, and with flanking, vertically oriented dials, to the left the day and date, to the right the month and 29 1/2 day moons age display, with gilt, engraved mask, the signed, two train pendule de Paris movement with dead beat escapement and striking on a bell, the pendulum with wooden rod, and brass mounting plate with calendar work driven by the strike train

\$1800-\$2500

Circa 1860 19in x 16in x 6in



459



459

France, an industrial lighthouse compendium with rotating lantern room, the tapering, architectural case with gold plated, faux ashlar exterior, the base and column with simulated windows and door, a projecting gallery with balustrade surrounding the nickel plated, rotating, domed lantern room with finial, containing an 8 day timepiece with roman numeral silvered dial with blued steel distaff hands, opposite an aneroid barometer with silvered dial and gilt center, and flanking, silvered Fahrenheit, Centigrade and Reamur thermometers, all resting on a round, black slate base, with conforming ebonized wooden base and dome

\$2500-\$3500

Circa 1880 18in x 6.25in

460

France, a late 19th century industrial windmill form compendium, the structure in silvered faux ashlar and mounted to a black slate base, the lower, cylindrical portion with central door and flanking windows, tapering mid section with ornate railing at base, and mounted with an 8 day timepiece with roman numeral silvered dial, barometer with silvered dial, and two thermometers, below the conical roof with vane, the windmill sails rotating in front of the dials, powered by a brass, spring driven movement concealed in the base

\$1600-\$2200

Circa 1890 19in x 6.75in

461

France, a very large and impressive Victorian era gilt bronze mantel clock, the base on ornamental feet and decorated with Vitruvian wave frieze, oak leaf and acorn medallions and moldings, and large acanthus leaf castings, two caryatids flanking a gilt dial with roman numeral cartouches, beaded bezel, and fancy blued steel hands, molded egg and dart, guilloche, and leaf cornice, surmounted by a plinth below a bulbous urn, the front with cartouche, and supported by three cornucopias, the plinth with flanking scrolls from which issue forth acanthus and fruit clusters, all ornament finely chased, and 8 day, two train pendule de Paris movement with pin wheel escapement and striking on a bell

\$3000-\$4000

Circa 1870 29.5in x 24in x 7.5in

460



462

France, a large and impressive black slate and cast bronze figural mantel clock, the heavy, molded base with break front and rounded ends and conforming, molded top, with gilt panels showing crowds of putti, cast in high relief, and engaged in allegorical representations of the arts, education, agriculture and industry, and flanking the roman numeral white enamel dial with exposed Brocot escapement and blued steel Breguet style hands, surmounted by a large, seated female figure with flanking putti, one seated on an overflowing cornucopia and offering harvest bounty, the other engrossed in study and seated on items representing education, arts, and industry, with 8 day, two train pendule de Paris movement striking on a bell

\$1800-\$2200

Circa 1875 27.75in x 25in x 10in

461



462



463



464



465



463

Raingo Freres a Paris mantel clock in a black marble case with gilt bronze mounts, the oblong base with inset with panels of gilt foliate ornament, case front with Adamesque vines and and torch, the top with urn and laurel swags, the sides with gilt cornucopias spilling their bounty onto base, all resting on cast bronze feet, roman numeral white enamel dial signed "RAINGO FRES A PARIS" with blue arabic numerals, outer five minute markers and Louis XV style hands, signed 8 day, two train, pendule de Paris movement striking the hour and half hour on delicate nickel plated bell

\$1000-\$1500

Circa 1870 13.5in x 10.5in x 4.25in

464

Switzerland, an early 19th century figural mantel clock, an attenuated, fluted oval column on a rectangular marble plinth with gilt molding and flattened toupie feet, surmounted by a bisque figure of a young man in a Grecian robe, and seated on a on a rock, with hat and bowl at his feet, the base of the figure contained in a gilt, molded oval ring, arabic numeral white enamel dial with cobalt blue, sector date display, pierced and engraved gilt hands, and 8 day, two train movement with silk thread suspension, verge escapement, and rack and count wheel striking sounding the quarters on two bells

\$900-\$1200

Circa 1810 19in x 9in x 6in

465

Switzerland, a good 20th century Black Forest carved wall mirror, the shaped, beveled glass fixed to a twig and leaf carved wooden back, the top with well carved landing falcon with glass eyes and well executed, paint enhanced plumage

\$300-\$500

Circa 1935 22.75in x 10.75in x 2.75in

466

Switzerland, a good Black Forest carved hare plaque, the well executed, painted figure with glass eyes and looking slightly to the left, and mounted to a leaf and twig carved plaque

\$300-\$400

Circa 1930 13in x 10.5in x 5in

466





467



468



469



470

467
Switzerland, a good turn of the 20th century carved figural Black Forest clock with St. Bernard, the shaped base with twig and fluted band border, beneath a rocky peak surrounded by tree stumps, branches, and foliage, and surmounted by a carved St. Bernard, with blanket belted around his mid section, a bell hanging from his collar, looking to his left, and with left paw raised, wooden dial with ivy leaf and berry carving, applied roman numeral white enamel cartouches, and gilt hands, 8 day, two train pendule de Paris movement striking on a bell

\$3000-\$5000
Circa 1900 24.5in x 15.75in x 7.25in

468
Switzerland, a good turn of the 20th century carved figural Black Forest clock with eagle, the shaped base with twig and fluted band border, beneath a rocky peak surrounded with lush foliage, and surmounted by a carved eagle, looking to his left, and with wings spread, arabic numeral white enamel dial with gilded sunk center, and gilt hands, 8 day, two train Junghans movement with round plates and unusual rack striking

\$2500-\$3500
Circa 1900 2.75in x 19.25 x 8in

469
Switzerland, a monumental late 19th century Black Forest mantel clock, the carved linden case depicting a rocky landscape with lush foliage, the base with a doe and her fawn, below an arabic numeral white enamel dial with open escapement, and surmounted by a large stag and oak tree, the animals all with glass eyes, 8 day, two train pendule de Paris movement with Japy mark, and sounding the hours and half hour on a bell

\$2000-\$3000
Circa 1900 33.25in x 19.75in x 9.5in

470
Baker, Troll & Co., Switzerland, a good Black Forest chalet form jewelry casket with music box, the three story building beautifully carved and detailed with balcony, exterior staircases, mirror windows with curtains, bee skeps, fire wood pile, horse trough, fencing, two standing female figures, and shingled roof with rock weighted poles, the hinged roof lifting to reveal a velvet lined well, the inside of the top with Baker - Troll tune card, the music box concealed within the base and playing one of four tunes when the cover is lifted

\$1000-\$1500
Circa 1900 16.5in x 21.75in x 10.75in



471

Switzerland, a large Black forest musical cuckoo clock, the case front with twig and oak leaf ornament, a dog running down a stag beneath the dial, and carved twig and oak leaf crest surmounted by a large eagle, roman numeral wooden dial with carved bone hands, and thirty hour, weight driven brass movement, the cuckoo announcing the half hour and hour, followed by a couple emerging from the adjacent door while music plays

\$1800-\$2500

Circa 1925 34.5in x 19in x 11.5in



472

Austria, a very attractive mid 19th century three train Vienna regulator, the case with typical, deeply incurved bottom bracket with flanking base moldings, turned drops, and lower transitional molding with split, turned drop, the door with molded, semi circular top and bottom with flanking, large, stylized carved leaves, the bottom also with carved, reeded ornament, the top with molded cornice below large leaves matching those flanking the door, and central fleur de lis form leaf finial, roman numeral white enamel dial with fancy blued steel hands, three train weight driven movement with grand sonnerie striking, three brass clad weights, and pendulum with ebonized wooden rod and brass bob

\$1800-\$2500

Circa 1865 69in x 24in x 8in



473

Austria, a late 19th century Alt Deutsch style three train Vienna regulator, the oak case with molded base and bottom bracket with turned drops, the glazed door with fluted columns having vasiform bases and scrolled capitals, the frieze with simple carved corbels below a molded cornice, and crest with scroll carved ornaments and central, stylized shell, the case back with central, burl veneered panel, roman numeral white enamel dial with fancy blued steel hands, 8 day, weight driven three train movement with grand sonnerie striking, and pendulum with ebonized rod and brass bob

\$1000-\$1500

Circa 1880 58in x 18.5in x 8.25in

474

England, a large and interesting mid 19th century dial clock, the round, laminated case replete with floral and foliate composition ornament, the sections separated by carved wooden fleur de lis, the top with large composition shell, and composition gadrooned bezel surround, very ornate gilded and silvered composition dial with faux engine turned ground, ornamented with C scrolls, bellflowers, foliage, and framed, black painted roman numeral reserves, the two train fusee movement with recoil escapement, five knopped pillars, and shouldered plates

\$1000-\$1500

Circa mid 19th c 25.5in x 23in x 7.5in



475
 Attributed to Evans, Handsworth, a large York Minster skeleton clock, nicely fretted and finished brass architectural frames, fretted roman numeral silvered dial with blued steel fleur de lis hands, three train fusee movement with English lever platform escapement, uncut bimetallic balance, and six spoke crossings, chiming the quarters on eight bells aligned front to back between the towers, and striking the hours on a large gong, all mounted to a footed, velvet lined ebonized oval base, with conforming glass dome

Condition: frames with scattered spotting and tarnish, three spires with repairs, dial with some tarnish, hands replaced and with uneven bluing, gong stand and gong with minor oxide, running and striking, dome and base good

\$6000-\$9000
 Circa 1860 24in x 16in x 11in



476
 Joyce, London, an unusual later 19th century skeleton clock, the shaped frames on two pairs of plinths, each with a common, stepped top and bottom, silvered dial with overlapping rings, the lower with roman numeral hours, the larger, center chapter ring showing arabic minutes, with signed, arched band below the center arbor, and small seconds at 12:00, the top dial with concentric rings, the outer showing the moon's age, the inner a universal tidal dial, all with blued steel hands, single train fusee movement with coup perdu pinwheel escapement, on an ebonized rectangular base with rounded corners and conforming glass dome

Condition: a bit oily and dirty, brass components with minor staining and tarnish, dials also with minor staining and tarnish, hands good, movement running, moon's age display and tidal dial functional, suspension spring with bends, pendulum bob with a few small dents, pendulum rod with adhesive residue, base with minor losses to ebonizing, dome good. See Derek Robert's "British Skeleton Clocks", page 255, for an image and brief description of an identical clock.

\$3000-\$5000
 Circa 1875 19in x 11.5in x 7.75in



477

Attributed to Evans, Handsworth, a large York Minster skeleton clock, nicely fretted and finished brass architectural frames, roman numeral silvered dial with blued steel maltese hands, three train fusee movement with recoil escapement and four spoke crossings, chiming the quarters on eight bells, and striking the hours on a large gong, all mounted to the original molded oval oak base on turned feet, with conforming glass dome

\$3000-\$5000 Circa 1865 23.5in x 20.25in x 12in



478

E.J. Dent & Co., Ltd., London, a 20th century skeleton clock with chronometer escapement, heavy brass fusee movement with skeletonized plates and turned baluster pillars, top mounted horizontal platform with Earnshaw's escapement and 4.75in., freesprung seconds beating balance with helical spring, roman numeral silvered dial with the zodiac and date display at the periphery, blued steel spring Vienna style hands and spear shaped date indicator, all on turned brass feet and mounted to a molded wooden base with gilt stamped leather covering, serial #11

\$800-\$1200

Circa 1975 15.5in x 13.75in x 10.75in



479

Winterhalder & Hofmeier, Germany, a very rare, large quarter chiming bracket clock, the oak case on a molded base, the glazed door with break arch aperture and carved foliate scroll spandrels and flanked by chamfered corners with lambs tongue stops, the molded top surmounted by a dome with carved front featuring a swag, fruit, and foliage, all on a stippled ground and below a molded plinth, the sides with molded frame doors and wooden frets, and the back door fitted with bevelled glass, roman numeral silvered dial with art nouveau inspired spandrels, and subsidiary dials for chime control and regulation, the arch displaying phases of the moon, fancy blued steel hands, very substantial 8 day, three train fusee movement with dead beat escapement, sounding the quarters on four or eight tubes, and striking the hour on a ninth tube, with pull repeat, together with its original large, carved oak shelf

Condition: base with minor dent, right side, top molding with corner bump and a few dents, right side, right side fret with minor loss, plinth molding with separation at corners, dial with minor localized darkening and minor scratch below 12:00, hands good, movement with significant fingerprint staining on back plate and two small spots of corrosion, ticks, chimes and strikes, tubes with tarnish and marks from handling, a few may need restringing, shelf with minor scrapes and scratches, tight splits on back board, open split on top.

\$6000-\$10000

Circa 1900 30.25in x 20in x 13.75in

480



480

C. Shapland, London, a good early 20th century chiming bracket clock, the mahogany break front case with a profusion of classically inspired inlay including rinceau, acanthus, stylized anthemion, paterae and stringing, the case sides and back door with fretted, textile backed panels, round brass bezel with beveled glass, round, roman numeral silvered dial with chime/ silent selection above 12:00, and tune selection at 3:00, heavy, blued steel fleur de lis hands, substantial, quarter striking three train fusee movement playing Cambridge chimes on eight bells, or Westminster on four gongs, and counting the hours on a larger, fifth gong

\$3000-\$4000

Circa 1920 20in x 15.5in x 9.5in

481

Parkinson & Frodsham, Change Alley, London, a good early 19th century three train Regency table clock, mahogany veneered oak break arch case with brass inlaid base below an ebonized, fluted frieze, brass inlaid door with brass molded, arch aperture, and crown glass, brass inlaid, ebonized canted corners, sides with fish scale frets and cornucopia mounts with ring handles, the case top with ebonized molding and stepped plinth surmounted by a pineapple finial, signed, white painted sheet iron dial with pierced brass hands and strike/ silent selection in the arch, and signed, 8 day, three train fusee movement with recoil escapement, sounding the quarters on ten bells, and striking the hours on an 11th, larger bell, the back plate with engraved leaf and vine border, the pendulum also with leaf and vine engraving and engraved rating nut with blued steel pointer

\$2500-\$3500

Circa 1820 23in x 13in x 8in

482

Chas. Sheerer, London, an early 19th century table clock, mahogany break arch case with molded base and cast brass bracket feet, glazed door with brass moldings, the molded top with brass handle, and case sides with fish scale frets, roman numeral silvered dial with arabic five minute markers, concentric date ring, subsidiary strike/ silent dial in the arch, engraved Adamesque ornament, and pierced, blued steel hands, and two train fusee movement with recoil escapement and pull repeat, sounding the last hour on demand, the back plate also with Adamesque engraving, the center with oval reserve and urn

\$1000-\$1500

Circa 1800 16.5in x 10.75in x 7.25in

483

Elliott, London, for J. C. Grogan & Co., Pittsburgh, Westminster chime bracket clock, mahogany case, engraved brass dial, serpentine hands, 8 day time and strike Westminster chime fusee brass movement

\$2500-\$3500

Circa 1900 18.5in x 13.25in x 9.75in

483



482



481



484

J.J. Elliott, London, England, oversized tambour shelf clock, mahogany veneered case, silvered brass dial with in painted engraved roman numerals, steel spade and pointer hands, 8 day high-quality fusee spring driven movement with Westminster chimes and hour strike on coiled gongs

\$1200-\$1600

Circa 1900 18in x 38in x 9.5in

484



67

66

485

George Taylor, an unusual mid 19th century "Geo. Taylor's Registd. Date Clock", rosewood veneered case with elongated octagonal bezel, inlaid with symmetrical vine, leaf and flower designs, the lower portion of the case with C scroll and leaf carved ornaments, glazed, oval pendulum viewing aperture with leaf carved surround, and mother of pearl inlay including deer, the curved bottom also with inlay, and locking door for pendulum access, large, oval, white painted roman numeral dial with day, date and month apertures below, and 8 day fusee timepiece movement with recoil escapement, and rectangular brass perpetual calendar movement

\$1600-\$2400

Circa 1860 32in x 17in x 6in

486

International Time Recording Co., Endicott, N.Y., an early 20th century two sided public slave clock, round, black painted copper case with side mount, arabic numeral white painted dials with black painted spade hands, and movements advancing at one minute intervals

\$400-\$600

Circa 1930 19.5in x 26.25in

487

Electrique Brillie, Levallois-Perret, France, an early 20th century type 1555 half seconds beating master clock, oak case with astragal and small cavetto molded front and marble back, roman numeral white painted dial with seconds below 12:00 and heavy spade and poker hands, the movement with electromagnetically impulsed 1/2 seconds pendulum with spherical bob

\$400-\$600

Circa 1920 18in x 13in x 5.25in



486

488

Eureka Clock Co., Ltd., London, a good "No. 12 Early English Case" variant mantel clock, the mahogany break arch case on brass ball feet and with molded base, top, three bevelled glasses, and battery compartment above movement, signed arabic numeral dial with blued steel spade hands, and battery powered brass movement with snailed back plate and large bimetallic balance, serial #7999

\$1000-\$1500

Circa 1910 13.5in x 9.5in x 6in

489

Bulle Clock Co., Paris, a good early 20th century three piece mantel clock garniture, the case with molded, variegated marble top and bottom, and brass frames with bevelled glasses, arabic numeral silvered dial with blued steel hands, and battery powered movement with electromagnetically impulsed pendulum, the battery holder concealed in the base, together with a pair of brass and marble tazze matching the clock

\$600-\$900

Circa 1920 14in x 9.5in x 7.25in

485



487



488



489



490
 Ithaca Calendar Clock Co., Ithaca, NY, "Melrose", double dial calendar shelf clock, ebonized cherry case, paper on metal dials, brass spade hands, and 8 day, time and strike spring driven brass movement

Condition: ebonized cherry case with nicely restored original finish, original backboard with description of past restoration performed on the case, some paint loss to one of the top ball finals and surface abrasion on top right molding, scratch on lower front base, original upper dial has some slight wear to the numerals at both winding arbors and light surface scratches, lower dial in very good overall condition with faint surface scratches at the center and a lower rub mark from contact with pendulum, original beveled door glasses, hands and pendulum are original. This clock was purchased from John Delaney around 1994 and sold by us in 2010. Extensive information can be found on this model in Tran Duy Ly's book titled "Calendar Clocks", pages 144-45. Very nice example of this rare model.

\$6000-\$8000
 Circa 1880 22in x 11.5in x 5.5in



491
 Sonora Chime Co, New York City, shelf clock, mahogany case, silvered dial, serpentine hands, 8 day spring driven time and strike movement with a ten bell Sonora chime unit and a twelve tune selector

Condition: Case in excellent condition with original finish, original silvered dial and serpentine hands, original tune card inside front door to case, bezel glass original; the clock plays a rotating tune first then the hour strike; an extremely rare clock from the company whose patents were later acquired by the Seth Thomas Clock Co. who in turn launched a large series of "Sonora Chime Clocks" during the 1908-1920 period.

\$6000-\$8000
 Circa 1906 18in x 12.75in x 8in



492

E. Howard & Co., Boston, Mass., "No. 53 Marble Dial Clock", hanging gallery clock in walnut case, roman numeral painted marble dial, trefoil hands, 8 day, time only weight driven brass movement

Condition: walnut case in nice condition in original finish has small chip and a shrinkage crack on the burl walnut lower door, original painted dial has some wear and loss, original hands and pendulum, weight baffle in the lower section of the case is missing, there is some small damage just above where the bottom panel fits into the case, two small half round side pieces are missing on the carved bottom, Included is an old newspaper article of the history of this clock about how a Mr. McCaskey bought the clock in 1876 at the Philadelphia World 's Fair and had it hung in the Boy's High School with additional info after it was removed from the school. The history is also written on the back of the marble dial.

\$4000-\$6000

Circa 1876 47in x 24in x 6.75in

493

**493**

Birge & Fuller, Bristol, Conn., steeple on frame with candle finials or double steeple, mahogany veneered case, painted metal dial, spade and pointer hands, 8 day, time and strike wagon spring driven brass movement

\$1500-\$2000

Circa 1845 26in x 13.75in x 4in

494

Forestville Manufacturing Co., J.C. Brown, Forestville, Conn., ripple front empire shelf clock, rosewood veneered case, painted metal dial, club hands, 8 day, time and strike spring driven fusee brass movement.

\$900-\$1200

Circa 1850 18in x 11.25in x 4.75in

495

Seth Thomas, Plymouth, Conn., off-center pillar & scroll shelf clock, mahogany and mahogany veneered case, painted wood dial, Terry type hands, 30 hour, weight driven wood movement

\$900-\$1200

Circa 1818 28.5in x 17.25in x 4.25in

494



495



496



497



496

Brewster & Ingrahams, Bristol, Conn., four column ogee Gothic or onion top shelf clock, rosewood veneered case, painted metal dial, spade and pointer hands, 8 day, time and rack strike spring driven brass movement

\$600-\$800

Circa 1847 20in x 11.75in x 3.75in

497

Ansonia Clock Co., New York, "La Tosca", shelf clock, Royal Bonn porcelain case, enameled dial, fleur de lis hands, 8 day spring driven time and strike brass movement with visible escapement

\$600-\$800

Circa 1904 15.75in x 9.75 x 5.5in

498

Chelsea Clock Co., Boston, Mass., "Tambour No. 5" mantel clock, polished brass case, silvered brass special dial with applied arabic numerals inscribed "A. Stowell & Co. Inc.", serpentine hands, 8 day, time and ship's bell strike, and spring driven movement with lever escapement, case and movement serial #101960

\$700-\$900

Circa 1913 9.5in x 16.5in x 4.75in

499

Abiel Chandler, Concord, New Hampshire hanging mirror clock in painted and gilt column case with reverse painted glass surrounding dial and mirror tablet, roman numeral painted metal dial with barbed hands, 8 day, time only, weight driven movement with typical New Hampshire cut out

\$1200-\$1600

Circa 1825 29in x 14in x 4in

500

Atkins Clock Co., Bristol, Conn., "Atkins Extra" hanging regulator clock, rosewood veneered case, 18" painted metal dial, 30 day "type C" double weight driven brass movement, c1869

\$900-\$1200

Circa 1869 58.25in x 22in x 6in

501

Massachusetts or New Hampshire, Willard school "No. 1" size hanging banjo clock or patent timepiece in a mahogany case with reverse painted and gold leafed throat and lower tablets, 12in roman numeral painted metal dial, 8 day, time only precision movement driven by a single brass weight with unusual pendulum rating and anti-friction crutch mechanisms, gilded pendulum rod

\$1500-\$2000

Circa 1830 50.5in x 20.5in x 6in

498



499



500



501





502

Sawin & Dyar, Boston, Mass., gilt front hanging lyre clock in a mahogany lyre form case with gilded gesso front, reverse painted throat and lower tablets, case stamped "XI", roman numeral painted iron dial with maker's signature, cut steel hands, 8 day, time only, weight driven movement

\$1500-\$2500

Circa 1820 41in x 12.25in x 4.5in



503

Girandole reproduction banjo hanging clock, unknown maker, mahogany case with gold painted front, reverse painted throat and lower convex glass tablets and painted aluminum dial, 8 day, time only, weight driven Kilbourn & Proctor movement, c.1980

\$900-\$1200

Circa 1980 45in x 12in x 5.25in



504

Unknown, (possibly Sawin & Dyar), Boston, Mass., true hanging lyre clock in a mahogany case, painted metal dial, diamond form hands, 8 day, weight driven brass movement

\$900-\$1200

Circa 1830 37.5in x 13.5in x 5.5in



505

Unknown, Massachusetts, patent timepiece or banjo with alarm hanging clock, mahogany case, painted metal dial, moon hands, 8 day, weight driven brass movement

\$900-\$1200

Circa 1820 33in x 9.75in x 4in



506

Boston, (Willard attribution), hanging patent timepiece or banjo clock, mahogany and gilt case, painted iron dial, barbed hands, 8 day, weight driven brass movement. This is a Boston made case with thin sides to the head and the other frame parts, dial is attached to the head with two L-turns, T-bridge movement is attached with through bolts, mahogany backboard

\$800-\$1200

Circa 1810 41in x 10.25in x 3.5in



507

William Cummens, Roxbury, Mass., hanging wood front banjo clock, mahogany case with brass side arms stamped "12" and aperture revealing pendulum bob, roman numeral painted iron dial with maker's signature, and steel barbed hands, 8 day, time only, weight driven, tall T-bridge brass timepiece movement

\$800-\$1200

Circa 1820 33.5in x 9.75in x 4in



508

Elmer Stennes, Weymouth, Mass., girandole clock, gilt carved case, painted metal dial, Curtis type hands, gilt eagle finial, 8 day, weight driven brass movement, stamped: "16' and "70"

\$2500-\$3000

Circa 1970 44in x 12in x 5.25in



509

Foster S. Campos, Pembroke, Mass., girandole clock, mahogany case with gilded front, painted metal dial, girandole hands, gilt eagle finial, and 8 day weight driven brass movement

\$2500-\$3500

Circa 2005 45in x 12.75in x 4.75in



510

Charles Alvah Smith, Brattleboro, Vermont hanging clock, serial #2 of 612 total made, in a rectilinear walnut case with string inlay and raised panels on sides, roman numeral paper dial with ebony hands, 8 day, time only, weight driven wooden movement with wooden pendulum rod, bob and mounting bracket, signed in pencil on dial frames "Made by Charles Alvah Smith, Brattleboro, Vt No. 2" and "New Movement made March, 1933, New face Feb. 1938", signed on movement "#320 movement"

\$1000-\$1500

Circa 1933 15.5in x 7.5in x 6in



511

Ted Burleigh, Winchester, Mass., presentation patent timepiece or banjo clock, mahogany and gilt case, painted metal dial, barbed hands, 8 day, weight driven brass movement

\$1200-\$1500

Circa 1973 42in x 10.25in x 4in



512

C.E. Beacham, Sisters, Oregon, miniature girandole hanging timepiece, 8 day weight driven brass movement in a mahogany and gilt case with silvered metal dial.

\$1000-\$1500

Circa 1990 23.5in x 6.5in x 3in



513

Foster S. Campos, Pembroke, Mass., patent timepiece or banjo clock, mahogany banded case, painted metal dial, barbed hands, 8 day, weight driven brass movement

\$900-\$1200

Circa 1999 42in x 10.5in x 4in



514

Charles Alvah Smith, Brattleboro, Vermont hanging clock, serial #561 of 612 total made, in a rectilinear tiger maple case with string inlay and glazed sides, roman numeral paper dial with tiger maple hands, 8 day, time only, weight driven wooden works movement with wooden pendulum rod, bob and mounting bracket and tiger maple sheathed weight, stamped on case "Apr. - 1945 and "Chas. A. Smith, Canal St. Brattleboro No. 561" with movement stamped "562"

\$800-\$1200

Circa 1945 12.5in x 6.75in x 5.5in



515

Wayne R. Cline, Bowling Green, Kentucky, miniature diamond head banjo clock, mahogany case, painted metal dial, spade and pointer hands, 8 day, spring driven brass lever movement

\$600-\$800

Circa 1980 21.5in x 5.5in x 2.25in



516

Wayne Cline, Bowling Green, Kentucky, miniature copy of a Howard "No. 11" keyhole hanging clock, walnut case, painted metal dial, moon hands, 8 day, spring driven lever brass movement. Case is stamped No. "4".

\$400-\$600

Circa 1980 15.5in x 6.75in x 2.25in



517

William L. Gilbert Clock Co., Winsted, Conn., "Regulator No. 5" hanging clock, walnut case, maltese hands, 8 day, weight driven time only brass movement

\$700-\$900

Circa 1881 46in x 20in x 5.5in



518

E. Howard & Co., Boston, Mass., "No. 59-8 Regulator" hanging clock in a cherry case with cherry weight baffle, three turned finials and three turned, carved drops, roman numeral 8 inch painted metal dial signed "E. HOWARD & CO. BOSTON" with blued steel moon hands, 8 day, time only, weight driven movement signed "E. HOWARD & CO. BOSTON" and stamped "5" with damascened pendulum bob and silvered pendulum rod

\$3000-\$4000

Circa 1890 46.5in x 15.5in x 6.5in



519

Howard & Davis, Boston, Mass., "No. 1 Regulator" hanging banjo clock in a rosewood grain painted cherry case with reverse painted throat and lower tablets, roman numeral painted iron dial with blued steel diamond hands and subsidiary seconds, 8 day, time only, weight driven movement with damascened pendulum bob and maintaining power

\$2500-\$3500

Circa 1860 50in x 19.75in x 6in



520

E. Howard & Co., Boston, Mass., "No. 2 Regulator" hanging banjo clock, rosewood grain painted cherry case with reverse painted throat and lower tablets with "27" stamped on case and hinges, roman numeral painted iron dial with E. Howard & Co. signature, 8 day, time only, weight driven movement signed E. Howard & Co., movement with damascened pendulum bob

\$2000-\$3000

Circa 1885 44in x 17.5in x 5.25in



521

E. Howard & Co., Boston, Mass., "No. 75 Regulator" hanging clock in a walnut case with reverse painted lower tablet, roman numeral painted metal dial with blued steel spade hands, 8 day, time only, weight driven movement with damascened pendulum bob

\$2000-\$3000

Circa 1885 33.5in x 15in x 5in



522

Howard & Davis, Boston, Mass., "No. 3 Regulator" hanging banjo clock, mahogany case, painted metal dial, moon hands, 8 day, weight driven brass movement

\$2000-\$3000

Circa 1858 38in x 15.75in x 4.5in



523

E. Howard & Co., Boston, Mass., "Regulator No. 11" or keyhole hanging clock, rosewood grained cherry case, painted metal dial, moon hands, 8 day, weight driven brass movement

\$1700-\$2200

Circa 1874 31.5in x 13.5in x 4.75in



524

E. Howard & Co., Boston, Mass., "No. 70 Regulator", hanging hanging clock with a 14 Inch dial, walnut case, painted metal dial, 8 day, weight driven brass movement

\$1500-\$2000

Circa 1900 35in x 18in x 5in



525

E. Howard & Co., Boston, Mass., re-issue "No. 10 Regulator" hanging clock in a figure eight shaped walnut case with reverse painted throat and lower tablets, 8in roman numeral painted metal dial with steel moon hands and script Howard signature, 8 day, time only, weight driven movement signed, numbered and dated 1975 on front plate, serial #175 includes paperwork

\$1500-\$2000

Circa 1975 34in x 11.25in x 5in



526

E. Howard & Co., Boston, Mass., "No. 10 Regulator" figure eight hanging clock, walnut case, painted metal dial, moon hands, 8 day, weight driven brass movement Case is stamped "16".

\$1000-\$1500

Circa 1874 34in x 11.25in x 4.25in



527

J. Polsey, Boston, Mass., "No. 5 Regulator" hanging banjo clock, rosewood grain painted cherry case with reverse painted throat and lower tablets, roman numeral painted iron dial, steel moon hands, 8 day, time only weight driven movement signed in two locations, damascened pendulum bob

\$600-\$800

Circa 1860 29in x 12in x 4.25in

528

Ithaca Calendar Clock Co., Ithaca, NY, "Advertising Index" double dial calendar hanging clock, oak case, 8-day time and strike spring driven movement, papered metal dials, maltese steel hands, c1890

\$800-\$1200

Circa 1890 35in x 14in x 5in



529

Ithaca Calendar Clock Co., Ithaca, NY, "No. 3 Regulator", double dial calendar hanging clock converted from a shelf model in a walnut case, paper on metal dial, trefoil hands, 8 day, double weight driven brass movement

\$800-\$1200

Circa 1874 39in x 19.25in x 6.25in



530

Ithaca Calendar Clock Co., Ithaca, NY, "Checker Board", double dial calendar clock, walnut case, paper on metal dial, maltese hands, 8 day, time and strike spring driven brass movement

\$600-\$800

Circa 1880 27.75in x 11.5in x 4in



531

**531**

Ithaca Calendar Clock Co., Ithaca, NY, "No. 3 1/2 Parlor", shelf clock, walnut case with ebonized trimmings, black paper time dial, glass calendar dial, moon hands, 8 day spring driven time and strike movement with an H. B. Horton patented perpetual calendar mechanism

\$1300-\$1500

Circa 1881 20.5in x 10.25 x 5.5in

532

Ithaca Calendar Clock Co., Ithaca, NY, "No. 6 1/2 Shelf Belgrade", calendar shelf clock, ash case, paper on metal dial, maltese hands, 8 day, time and strike spring driven brass movement.

\$1200-\$1800

Circa 1880 32in x 14in x 6.75in

532

**533**

Ithaca Calendar Clock Co., Ithaca, NY, "Index" shelf clock "Manufactured for Lynch Brothers", walnut case, paper on metal dials, maltese hands, spring driven, 8 day, time and bell strike movement (E. N. Welch, Forestville, Conn.) with a Hortons perpetual calendar mechanism in a walnut case.

\$700-\$900

Circa 1875 31.5in x 15in x 5.5in

534

Ithaca Calendar Clock Co., Ithaca, NY, "Steeple", double dial calendar clock, walnut case, paper on metal dial, spade hands, 8 day, time, strike and alarm spring driven brass movement (E. N. Welch) with a H. B. Horton patented perpetual calendar mechanism.

\$700-\$900

Circa 1880 25.25in x 12.25in x 5.75in

533

**535**

Seth Thomas Clock Co., Thomaston, Conn., "Chime Clock No. 2001" shelf clock, mahogany case, silvered dial with gold plated cast pierced open work, serpentine hands, 8 day spring driven time and strike brass movement (89X) with a 8 bell Sonora chime movement (104E) which plays both Westminster and Whittington chimes

\$2400-\$2800

Circa 1915 18.5in x 12.4in x 9

536

Seth Thomas Clock Co., Thomaston, Conn., "Chime Clock No. 19" shelf clock, real bronze case, silver dial with raised bronze numerals, serpentine hands, 89M 8 day time and strike spring driven brass movement and a 90B 5 bell Sonora chime movement

\$1500-\$2000

Circa 1913 15in x 9.25in x 7in

534



536



535



537

**537**

Seth Thomas Clock Co., Thomaston, Conn., "Chime Clock No. 255", chime clock, mahogany case, silvered brass dial, spade hands, 8 day, time and strike spring driven brass movement.

\$1500-\$2000

Circa 1914 9.5in x 10.75in x 7in



538

Seth Thomas Clock Co., Thomaston, Conn., "Office Calendar No. 10", calendar hanging clock, walnut case, painted metal dials, spade time hands, Seth Thomas calendar hand, 8 day weight driven time only movement with maintaining power with an R. T. Andrews patented perpetual calendar movement

\$2500-\$3000

Circa 1886 49in x 16.5in x 7in



539

Seth Thomas Clock Co., Thomaston, Conn., "Regulator No. 30" hanging clock, walnut case, painted metal dial, spade hands, 8 day brass weight driven movement with maintaining power

\$1400-\$1800

Circa 1909 49.5in x 19in x 7.5in



540

Seth Thomas Clock Co., Thomaston, Conn., "Regulator No. 3" hanging clock, walnut and burl walnut case, painted metal dial, spade hands, 8 day weight driven time only movement with maintaining power

\$1200-\$1500

Circa 1890 42in x 20in x 6in



541

Seth Thomas Clock Co., Thomaston, Conn., "Regulator No. 1 Extra" hanging clock, rosewood veneered case, painted metal dial, spade hands, 8 day weight driven time only movement with maintaining power

\$1000-\$1500

Circa 1875 42in x 20in x 4.5in



542

Seth Thomas Clock Co., Thomaston, Conn., "Regulator No. 3" hanging clock in oak case made for Ball Watch Co., weight driven 8 day brass timepiece movement with maintaining power

\$1000-\$1500

Circa 1890 44in x 19in x 6in



543
Seth Thomas Clock Co., Thomaston, Conn., "Regulator No. 9" hanging clock, cherry case, painted metal dial, spade hands, 8 day, weight driven brass movement

\$1000-\$1500
Circa 1896 48in x 17in x 7.75in



544
Seth Thomas Clock Co., Plymouth Hollow, Conn., "Office Calendar No. 1", calendar hanging clock, rosewood veneered case, paint on metal for both time and calendar dials, Seth Thomas hands, 8 day weight driven time only movement with maintaining power and a Mix Bother's patented perpetual calendar mechanism

\$900-\$1100
Circa 1862 40.5in x 19.5in x 6.75in



545
Seth Thomas Clock Co., Thomaston, Conn., "Regulator No. 30" hanging clock, carved oak case, painted metal dial, spade hands, 8 day, time only, weight driven brass movement

\$900-\$1200
Circa 1909 49in x 19in x 7.75in



546
Waterbury Clock Co., Waterbury, Conn., "Augusta" hanging clock in a carved oak case with brass ornamentation, roman numeral silvered brass dial with Waterbury hands, 8 day, time and strike, weight driven movement with endless chain winding

\$800-\$1200
Circa 1893 51in x 18.5in x 6.5in



547
Waterbury Clock Co., Waterbury, Conn., "Regulator No. 53" hanging clock, oak case, painted metal dial, Waterbury hands, 8 day weight driven brass time only movement with maintaining power

\$800-\$1200
Circa 1906 51in x 20in x 8in



548
Welch, Spring and Co., Forestville, Conn., "Gale Drop Model No. 2", calendar hanging clock, rosewood veneered case, paper on metal dial, and 8 day, time and strike spring driven brass movement.

\$2000-\$3000
Circa 1880 30.5in x 16.75in x 5in



549

E.N. Welch Mfg. Co., Forestville, Conn., "Damrosch", double dial calendar hanging clock, walnut case, paper on metal dial, maltese hands, 8 day, spring driven brass movement with Daniel Jackson Gale calendar. Welch manufactured Gale's patent calendar clocks from 1873 through 1893.

\$1500-\$2000

Circa 1885 41in x 15.25in x 5.25in

550

E.N. Welch Mfg. Co., Forestville, Conn., rare "Unknown No. 25" in a spelter case in form of amphorae, roman numeral painted metal dial, 8 day, spring driven movement striking on cathedral bell in the Patti series

\$1000-\$1500

Circa 1886 18.5in x 12in x 5in

Schmitt Horan & Co. General Terms & Conditions

SALES TAX and BUYER'S PREMIUM: You agree to pay the Buyer's Premium on every item purchased. The Buyer's Premium is a percentage of the hammer price of each item added to the sale total for that item. There is NO sales tax in New Hampshire. The Buyer's Premium is 20% of the hammer price.

SPECIAL EVENT: The special event auction of November 19, 2022 will not offer phone bidding, internet bidding, nor absentee bidding. Bidder must be in attendance or have someone represent them in attendance to bid. See list of recommended Buyer's Agents below for suggestions.

LIVE BIDDING: The November 19 & 20, 2022 auction is open to the public and live in-person attendance is allowed and encouraged. For the auction on Sunday, November 20 we also offer several alternatives to attending in person, including our own live bidding software at bids.schmittoran.com. You may also bid live at www.invaluable.com or www.liveauctioneers.com or www.bidsquare.com. There is an extra 5% fee charged by the third party bidding services for internet bidding. The total Buyer's Premium, which includes the 5% fee, on all third party purchases is 25%.

PHONE BIDS: On items, selling on November 20, 2022 you may register to bid via telephone. It is necessary to contact us at least to 72 hours prior to the auction to arrange for phone bidding. Pre-registration is required.

ABSENTEE or LEFT BIDS: In all cases, a left or absentee bid will be executed for as low a price as possible. Many absentee bids lose by only one bid, a frustration that can be reduced if a live person has authority to bid "one more time". Therefore, we offer **PLUS ONE (+1)** bidding format to allow our absentee bidders to be more competitive, contact us for details. Bid forms are available on our web page or in the rear of the catalog. You may submit your bid online, by fax, snail mail or e-mail no later than 48 hours prior to the start of the auction to: bids@schmitt-horan.com. Absentee bidding and phone bidding services are provided by Schmitt Horan & Co. as a courtesy to our clients. Schmitt Horan & Co. cannot be held responsible or liable for failure to receive or execute absentee bids.

PAYMENT FOR SUCCESSFUL BIDS: We will normally notify successful bidders within three business days of the auction. We use e-mail to notify bidders and postal mail if a client does not have e-mail available. Personal checks drawn on a U.S. bank are acceptable. We also accept VISA, Mastercard, Discover, American Express and Paypal, all subject to our standard 20% Buyer's Premium. Note that shipping charges are extra and will be billed by Schmitt Horan & Co. or a third party at the time of shipment. Payment is due on receipt of invoice, and no later than 30 days from the date of the auction. Items not paid for within the 30 days from the date of the auction will be charged a 2% monthly interest rate on the balance due. Large international transactions may be performed via wire transfer. Details available upon request.

ITEMS & ACCESSORIES: It is the buyer's responsibility to verify that he / she has received accessories that may be separate when taking possession of their merchandise. Items purchased by bidders off site are not available for pick up during the sale at the auction hall.

ESTIMATES and RESERVES: After each description, we have indicated a high and low dollar estimate that should be used as a general guide. The final price may vary considerably from these estimates. There are few items in this sale with a reserve, or confidential minimum selling price, established with the consignor or vendor. Items failing to sell will be noted in the results sheet as \$0.00.

PHOTOGRAPHS: Please note, some items when photographed, particularly watches, may have shadows, reflections or other marks that are a result of the photographic process and are not permanent. Both buyer and seller grant unrestricted use of auction photographs and prices realized to Schmitt Horan, LiveAuctioneers.com, Invaluable.com and Bidsquare.com.

ITEM DESCRIPTIONS & CONDITIONS: Employees do their best to aid and assist the customer, however any statements made by Schmitt Horan & Co. employees, agents or contractors are not considered a definitive record of what is being sold. The final record of what is being sold in a lot under any and all circumstances is the catalog provided by Schmitt Horan & Co., both printed and online. If there is a discrepancy between employee statements and the catalog, the catalog is the final and ultimate legal record of what is offered in the lot. We do our best to identify restoration, alteration or other condition issues in the condition report. We shall not be held liable for failure to do so. **IT IS THE RESPONSIBILITY OF THE BUYER TO CONFIRM CONDITION PRIOR TO BIDDING.** If the lot description includes the words "as found" or "as is" the item is sold without any guarantees. **All lots containing multiple items are considered in "AS IS" condition and cannot be returned.** General maintenance items such as broken suspension springs, broken or missing weight cords, & missing keys are not mentioned. Most clocks and watches will require cleaning and service after purchase. All costs associated with this are the responsibility of the client. Dimensions are approximate.

SHIPPING: We use outside companies to ship clocks that provides services worldwide: Please see Vendor Section for details. We are often able to offer "in-house" shipping on watches.

PICK UP IN LIEU OF SHIPPING: Purchases by absentee bidders, phone bidders or internet bidders may be picked up no sooner than 3 business days following the sale. You or your agent may arrange pickup by appointment at our office in Candia, NH. Please plan to settle your account at time of pick up. Items left in our custody for over 30 days from the date of the auction will be charged a storage fee of \$25 per item per week, which must be paid before items are released. We shall not be held liable for damage occurring to any item left in our custody after 30 days from the date of the auction.

BUYER'S AGENT: We are increasing access to live bidding agents, who can independently execute your bids the day of the sale. This service provides an independent set of eyes to validate a potential purchase or to provide flexibility in spending needs. Other additional services provided by these agents include careful packing and flexible delivery options. Buyer's Agents generally charge a commission on each successful sale, which they will discuss with you prior to executing your bids.

Agents available for our June 11 & 12, 2022 sale are listed below:

Watches & Antiques

John Kovacic [jkovacik@verizon.net](mailto:jkovacic@verizon.net) or (315) 823-1205

Clocks & Antiques

Rick Merritt rmerritt@ptd.net or (610) 780-5979

RETURNS AND REFUNDS: Returns will be considered only for items that do not conform to catalog description. **UNDER NO CIRCUMSTANCES WILL RETURNS BE ACCEPTED OR REFUNDS ISSUED LATER THAN 30 DAYS AFTER THE AUCTION.** If there is a problem and a refund or adjustment is requested we ask to be notified within one week of the auction and require to be notified ABSOLUTELY no later than 30 days of the auction or 7 business days after the item(s) are delivered, whichever is earliest, no exceptions. Transit damage alone is not sufficient reason to return an item. We will assist in claims against transport companies.

DEFAULT and LITIGATION: REGISTRATION TO BID INDICATES ACCEPTANCE BY THE BIDDER OF THESE TERMS ENFORCEABLE AS A NEW HAMPSHIRE CONTRACT. Schmitt Horan & Co. will not be liable for default by either the buyer, consignor or the vendor. No purchase shall be claimed or removed until paid for in full. Schmitt Horan & Co. reserves the right to refuse to accept bids made by a defaulting buyer at any future auction and to collect all costs and attorney's fees from the buyer associated with litigation and storage involving default. All legal disputes arising from this contract shall be disputed, litigated or mediated under New Hampshire law in the State of New Hampshire. All consignors or vendors are represented in our records by either name or a code directly associated with that name and are also a legal party to this contract.

Index

Advertising 371
Advertising Index (Ithaca Calendar Clock Co.) 528
American Waltham Watch Co. 403
Angelus 416
Annular Clock 451
Ansonia Clock Co. 438, 497
Astronomical Regulator 429, 430, 431, 434
Atkins Clock Co. 500
Atkins Extra (Atkins Clock Co.) 500
Auburndale Watch Co. 402
Augusta (Waterbury Clock Co.) 546
Babe Ruth (Exacta Time Corp.) 382
Baker, Troll & Co. 470
Ball Watch Co. 542
Bally Manufacturing Co. 369
Banger, Edward 386
Barraud & Lunds 392
Beacham, C. E. 512
Birge & Fuller 493
Black Forest Clock 467, 468, 469, 471
Bourdin 423, 458
Bracket Clock 479, 480, 483
Breitling 378
Brewster & Ingrahams 496
Bulle Clock Co. 489
Bulova 371
Burgfeldt & Co. 441
Burleigh, Ted 511
Cairns, John 401,
Calendar Clock 415, 427, 458, 485, 490, 528-534, 538, 544, 548, 549
Campos, Foster S. 509, 513
Carriage Clock 420-427
Chandler, Abiel 499
Checker Board (Ithaca Calendar Clock Co.) 530
Chelsea Clock Co. 498
Chime Clock No. 19 (Seth Thomas Clock Co.) 536
Chime Clock No. 255 (Seth Thomas Clock Co.) 537
Chime Clock No. 2001 (Seth Thomas Clock Co.) 535
Christobal C (Longines) 384
Chronograph 378
Chronometer 405-409, 412, 478
Cline, Wayne R. 515, 516
Clockwork Picture 428
Conical Pendulum 452, 456, 460
Cradle, rocking 374
Crane, Aaron D. 374
Cronier 450
Crystal Regulator 449
Cuckoo Clock 471
Cummings, William 507
Damrosch (E. N. Welch Mfg. Co.) 549
Deck Watch 407, 409-411, 413
Dent & Co., E. J. 478
Desk clock 414-419
Dial Clock 474

Ditisheim, Paul 398
Double Steeple Clock (Birge & Fuller) 493
Drocourt 421, 424
Dumoulinneuf 451
Electrique Brillie 487
Elgin Watch Co. 410
Elliott, J.J. 483, 484
Eureka Clock Co.488
Evans 475, 477
Exacta Time Corp. 382
Favag SA 435
Fedchenko, F.M. 432
Forestville Manufacturing Co. 494
Frodsham, Charles 387
Frodsham, Henry 411
Gale Drop Model No. 2 (Welch, Spring & Co.) 548
Gallet 380
Gilbert Clock Co., William L. 517
Girandole 503, 508, 509
Girard, Perregaux 417
Goddard & Son, L. 400, 404
Graham, George 393, 394
Gubelin 418
Guilmet, Andre Romain 449, 453
Hamilton Watch Co. 405, 408
Hayden, Brother & Co. 399
Hour Angle (Longines) 385
Howard & Co., E. 492, 518, 520, 521, 523-526
Howard & Davis 519, 522
Index (Ithaca Calendar Clock Co.) 533
Industrial Series, French 459
International Time Recording Co. 486
Ithaca Calendar Clock Co. 490, 528-534
Jeweler's Regulator 433, 436-438
Joyce 476
Kulberg, Victor 407
La Tosca (Ansonia Clock Co.) 497
Lathe 372, 373
LeCoultre 414, 419
Leekey, Gabriel 396
Leroy 425
Lighthouse clock 459
Longines 384, 385, 395
Losada, Jose R. 397
Lucien Piccard 383
Lyre Clock 502, 504
Master Clock 435
McCabe, James 419
Melrose (Ithaca Calendar Clock Co.) 490
Mercer, Thomas 406
Muirhead & Arthur 388
Multichron Yachting (Gallet) 380
Musical Clock 471
Mystery Clocks & Swingers 448, 450, 453-455
Nardin, James 390
Navigation Watch 395
New Hampshire Mirror Clock 499

New Haven Clock Co. 437
Newsome & Co. 409
No. 1 Regulator (Howard & Davis) 519
No. 2 Regulator (E. Howard & Co.) 520
No. 3 1/2 Parlor (Ithaca Calendar Clock Co.) 531
No. 3 Regulator (Howard & Davis) 522
No. 3 Regulator (Ithaca Calendar Clock Co.) 529
No. 5 Regulator (J. Polsey) 527
No. 6 1/2 Shelf Belgrade (Ithaca Calendar Clock) 532
No. 10 Regulator (E. Howard & Co.) 525, 526
No. 11 Regulator (E. Howard & Co.) 523
No. 53 Marble Dial Clock (E. Howard & Co.) 492
No. 59-8 Regulator (Howard & Davis) 518
No. 70 Regulator (E. Howard & Co.) 524
No. 75 Regulator (E. Howard & Co.) 521
No. 986 tall clock, Waltham Clock Co. 443
Norman, Matthew 427
Office Calendar No. 1 (Seth Thomas Clock Co.) 544
Office Calendar No. 10 (Seth Thomas Clock Co.) 538
Old Navitimer (Breitling) 378
Oudin, Chles. 422
Oyster Perpetual 379, 381
Parkinson & Frodsham 412, 481
Penny, David 370
Peyer & Favarger 430
Pillar & Scroll 495
Pinball Machine 369
Polsey, J. 527
Raingo Fres 463,
Regulator No. 3 (Seth Thomas Clock Co.) 540, 542
Regulator No. 9 (Seth Thomas Clock Co.) 543
Regulator No. 1 Extra (Seth Thomas Clock Co.) 541
Regulator No. 5 (William L. Gilbert Clock Co.) 517
Regulator No. 10 (New Haven Clock Co.) 437
Regulator No. 11 (Ansonia Clock Co.) 438
Regulator No. 30 (Seth Thomas Clock Co.) 539, 545
Regulator No. 53 (Waterbury Clock Co.) 547
Regulator No. 70 (Waterbury Clock Co.) 436
Riefler, Sigmund 429, 431
Ripple 494
Robert, Jean Eugene 448
Rolex Watch Co.377, 379, 381
Rose Engine 372
Sawin & Dyer 502, 504
Seth Thomas Clock Co. 495, 536-545
Shapland, C. 480
Sheerer, Charles 482
Silver Ware 375
Skeleton Clock 475-478
Slave Clock 486
Smith & Son, S. 413
Smith, Charles Alvah 510, 514
Sonora Chime 491, 535, 536
Sonora Chime Co. 491
Steeple (Ithaca Calendar Clock Co.) 534
Steiff Co. The 375
Stennes, Elmer O. 445, 508
Submarine (Rolex Watch Co.) 377

Table Clock 447, 457, 481, 482
Tall Clock, Grandfather, Hall, Floor Regulator 441-446
Tambour Clock 484, 498
Tambour No. 5 (Chlesea Clock Co.) 498
Tank Regulator 429, 430, 432
Taylor, George 485
Thermometer Watch 391
Tiffany & Co. 389
Tompion, Thomas 386
Torsion Pendulum 449
Unknown No. 25 (E. N. Welch Mfg. Co.) 550
Vienna Regulator 439, 440, 472, 473
Walker & Co., D. 374
Waltham Clock Co. 433, 443
Waterbury Clock Co. 436, 546, 547
Welch Mfg. Co., E. N. 549, 550
Welch, Spring & Co. 548
Willard 506
Winterhalder & Hofmeier 479
Zenith Watch Co. 434

VENDORS & TRADE RELATIONS

Transport/Shipping

These are blanket wrapped hand delivery specialists. Ask for quotation.

>Mr. Scott Salzarulo, 200 W. Housatonic, #20, Pittsfield, MA 413-212-1252

>Ms. Wendy Buckus, 64 Hutchins, Concord, NH, 03301, 603-491-5199, nwtransport@aol.com

>Mr. Scott Cousins, 22 Nichols St. Merrimac MA 01860, scottcousins22@aol.com, (978) 419-9353

>Sure Express Worldwide, 110 Industrial Way, Portland, ME 04103, (800) 335-9996, sureexpress@maine.rr.com

>Top Notch Transport, Tom & Lynn Hodgson, (309) 253-9700, infotopnotchtransport@gmail.com

Packing, Crating & Shipping (Standard Big Box Shipping, UPS, FED EX, USPS)

>Parcel Room, 1465 Woodbury Ave, Portsmouth, NH 03801 (603) 431-4205, email auctions@parcelroom.com

>The UPS Store, 35 Manchester Rd Ste 11A, Derry, NH 03038, (603) 434-9899, store4686@theupsstore.com

Barometer Repair

>Winchester, MASS, 01890, Wayne Paskerian, (781) 729-0113, winway2@verizon.net

Clock & Watch Sales & Repair MID-WESTERN & WESTERN STATES

>Carlsbad, CA, 92008, Richard Ivkovich, 2916 State St, (760) 729-1225

>Costa Mesa, CA 92627, Robert Emenger, Buck's Clock Shoppe, 440 E. 17th St, (949) 631-3215, bucksclockshoppe@msn.com

>Laguna Beach, CALIF, 92651, Dean Armentrout, 2185 Laguna Cyn-#B-1, 949-494-2711, dean-armentrout-antiques.com

>San Diego, CALIF, 92103; Time Traveler, Rich Wauson, 4227 Park Blvd, 619-298-5391, rew11ttc@gmail.com

>Palatine IL, 60067, Tick-Tock Clock Repairs Inc., 342 South Hart St, 847-991-4230, www.ticktockclock.com

>Mendota Height, MN, 55118, Cutter Edge, Inc 1169 Veronica Ln, (612) 280-5560 wcutter@cutteredge.com

>Oklahoma City, OK, 73122 Richard Garrett, House of Time, 3144 N MacArthur, (405) 946-0029 rghorologist@hotmail.com

Clock & Watch Sales & Repair EASTERN STATES & CANADA

>Burlington, CONN, 06013; Mel Brown, 37 Village Lane, 860-673-2256 – Tickdoc1@aol.com

>E. Norwalk, CONN, 06855; The Clockery, 14 Van Zant St, 203-838-1789-www.clockery.com

>Cromwell, CONN, 06051, Frank De Felice, New Britain Clock Repair, 26 Edgewood St, 860-635-5599

>North Haven, CONN, 06473, Yankee Clock Peddler, (203) 288-4250, www.yankeeclockpeddlerct.com

>Tampa, FLORIDA, 33612, Boyd Clock Repair, 11620 N. Florida Ave, (813) 777-3437, boydclocks@gmail.com

>Harrison, MAINE, 04040, Harry Hepburn, 828 Edes Falls Rd, 04040, (207) 583-2821

>Saco, MAINE, 04072; Robert Boyd, 60 Shadagee Rd. #24 - 603-801-8292, bobboyd@rlbpab.com

>Scarborough, MAINE, 04074, Scarborough Hollow Clock Works, 700 US Route 1, Ste 104, (207) 730-7288 - scarboroughhollow@maine.rr.com

>Andover, MASS, 01810; Bob Frishman, 53 Poor St., 978-475-5001 – bell-time@comcast.net, www.bell-time.com

>Amesbury, MASS, 01913, Vincent Harrild, 1 River Ct. Suite 219 - (978) 314-8620, harrildvr@greenet.net

>Newton, MASS, 02458, Watertown Watch & Clock, 230 California St, (617) 244-3779, chris@watertownwatchandclock.com

>Swampscott, MASS, 01907, Phillips Clock Shop, 330 Essex St, (781) 593-1333, sales@phillipsclockshop.com, www.phillipsclockshop.com

>Wayland, MASS, 01778, Michael Poisson, 508-655-1958, mljw92@aol.com

>Warren, MICHIGAN, 48093; The Clockworks, 8385 Old 13 Mile Rd, (800) 574-9421, jkuechle@clockworks-inc.com, www.colcokworks-inc.com

>Exeter, NEW HAMPSHIRE, 03833; Barlows Clock Repair, 45 Donna Dr. 603-778-1452

>Hollis, NEW HAMPSHIRE, Russ Greenwood, 25 Louise Dr, 603-881-8309, rgtimeout44@msn.com

>Catskill, NEW YORK, 12411; Franklin Micare, 349 Main St, 518-828-5751, franklinmicare@rocketmail.com

>Little Falls, NEW YORK, 13365; Saving Time, PO BOX 169, savingtime@clockandwatchsite.com, (315) 823-1205 - www.clockandwatchsite.com

>Douglassville, PENNSYLVANIA, 1860 Weavertown Rd, 19518, Merritt's Antiques, (610) 689-9541, info@merritts.com, www.merritts.com

>Gibsonia, PENNSYLVANIA, 15044, Joe Brewer, - 2990 Marie Drive - (724) 443-9038

>Peace Dale, RHODE ISLAND, Old School Antiques, Peter Nunes, 4 Hopkins Ln, (410) 742-2112, peter.nunes@verizon.net

>Manassas, VIRGINIA, 20110; Orsini & Frost, 9071 Center Street, 703-368-0618

Dial Restoration & Repainting

>The Clocksmith, 1531 Bower Ln, Johns Island, SC 29455, (843) 327-0455, bryan@clockrepaircharlestonsc.com, www.clockdialrestorations.com

>The Dial House, 3971 Buchanan Hwy, Dallas, GA 30157, (770) 445-2877, dial_house@juno.com, www.dialhouse.net

Related Restoration Materials/Vendors

>Merritts, Inc., Box 277, Douglasville, PA, 19518, 1-800-345-4101 – www.merritts.com

>Timesavers, Box 12700, Scottsdale, AZ, 85267, 1-800-552-1520 – www.timesavers.com

Hand Painted Tablets

>Lee Davis, 4150 Old Orchard Rd., York, PA 17402, 717-757-7267

>Tom Moberg, 2323 Vandekaar Rd, Owasso, MI 48867 989-723-3112

All listings are made free of charge. We apologize for any error or omission. Please let us know of address changes or poor service from those recommended.

DELANEY ANTIQUE CLOCKS

delaneyantiqueclocks.com

*The Largest Selection of American
Antique Tall Clocks in the Country*
SHOP HOURS: Saturday & Sunday 9AM to 5PM
During the week by chance or gladly by appointment

435 Main Street
West Townsend, MA
01474

60 MINUTES FROM BOSTON
45 MINUTES FROM MANCHESTER, NH

978-597-2231





Fax: (603) 432-2271
 Phone: (603) 432-2237
 E-mail: bids@schmitt-horan.com

--This form must be submitted 48 hours prior to the start of the auction--

PLEASE BID ON MY BEHALF, BIDDING AS CHEAPLY AS POSSIBLE, ON THE LOTS LISTED AND DESCRIBED BELOW. THE \$ FIGURE ENTERED IN THE RIGHT COLUMN IS MY MAXIMUM "HAMMER" PRICE, AND I UNDERSTAND THERE IS AN 20% BUYER'S PREMIUM ADDED TO THAT AMOUNT. THERE IS NO SALES TAX IN NH.

Please note: We offer "+1 BIDDING SERVICE". See our website for details.

LOT #	BRIEF DESCRIPTION	\$ BID / +1 (Y/N)
_____	_____	\$ _____ 1
_____	_____	\$ _____ 2
_____	_____	\$ _____ 3
_____	_____	\$ _____ 4
_____	_____	\$ _____ 5
_____	_____	\$ _____ 6
_____	_____	\$ _____ 7
_____	_____	\$ _____ 8
_____	_____	\$ _____ 9
_____	_____	\$ _____ 10
_____	_____	\$ _____ 11
_____	_____	\$ _____ 12
_____	_____	\$ _____ 13
_____	_____	\$ _____ 14
_____	_____	\$ _____ 15
_____	_____	\$ _____ 16

Additional sheets are acceptable. Upon notification that my bid or bids are successful, I shall promptly remit the balance due. I understand that I will be billed separately by the packing company for shipping.

_____/_____/_____) Total number of bids _____)
 Signature Date

Name _____

Address _____ City _____

State _____ Zip _____ E-mail _____

Telephone: Evening _____ Day _____ Cell _____

All invoices will be mailed or e-mailed two to three days after the auction. Please do not contact us regarding an invoice until at least 72 hours after the auction.

We offer this service as a convenience to our customers, and we cannot be responsible for late mail, failed transmissions, or other failures to execute bids. We are also not responsible for an unreadable FAX written in blue ink. Please use black ink, print clearly and confirm successful transmission by phoning us. All bids are confidential. We urge you to FAX this form as regular mail can prove unreliable. Express or Priority mail are also satisfactory. NH Lic #5060. You may also submit this form by email or phone. For other questions or bids e-mail: bids@schmitt-horan.com or telephone the number listed above.

COPIES OF THIS FORM ARE ACCEPTABLE