

Saturday, June 11, 2022 11am

Lots 1 - 600 Special Event

Discovery Sale / Live Bidding Only

Sunday, June 12, 2022 11am

Lots 601 - 699 Coins

Lots 700 - 946 Clocks, Watches, Antiques

Absentee, Phone, Online, Live Bidding

Preview

8am to 10:45am, June 11 & 12

By Appointment

June 6th to June 10th

Location: Candia, New Hampshire

Welcome to Schmitt Horan & Co.'s two day Spring 2022 live auction event and the opening of our new facilities in Candia, New Hampshire. Our address where the auction will be hosted on-site is:

**80 Raymond Rd
Candia, NH 03034**

We have an active social media presence on Facebook, Instagram, Twitter and Youtube. Please visit ***schmitt-horan.com*** to follow us or view additional detail images and condition reports not shown in this catalog.

For instructions on bidding, please see terms and conditions at the rear of catalog.

Online Bidding

bids.schmittthoran.com

www.liveauctioneers.com

www.invaluable.com

www.bidsquare.com

SUMMARY OF TERMS OF SALE

REGISTRATION Is required prior to the sale for all bidders, including online, internet, phone and absentee.

CONDITION OF LOTS We describe and evaluate each lot to the best of our ability. The condition and authenticity should be confirmed by personal examination. The final decision to bid, and the amount to bid is at the bidder's discretion and liability.

ITEMS PURCHASED Successful bidders must remit payment within 10 business days of close of the auction. It is the buyer's responsibility to verify that he / she has received accessories that may be separate when taking possession of their merchandise.

BUYER'S PREMIUM Buyers pay 20% premium on the hammer price. Paypal and all major credit cards are accepted. Invaluable, Live Auctioneers and Bidsquare bidders pay an additional fee of 5%, as well as the 20% buyer's premium.

PAYMENT Acceptable forms of payment include pre-approved personal checks, cash, Paypal, and all major credit cards: VISA, Mastercard, American Express & Discover.



**SCHMITT
HORAN & CO.**

PO Box 31, Candia, NH 03034
sales@schmitt-horan.com
603.432.2237

AUCTIONEER
Daniel Horan
NH License #5060



BIDDING
INCREMENTS

We will make every effort
to use the following increments:

\$0 - \$500: \$25 increments
\$501 - \$1000: \$50 increments
\$1000 and up: Auctioneer's Discretion

Typically:
\$1001 - \$2000: \$100 increments
\$2001 - \$4000: \$200 increments
\$4001 - \$10,000: \$500 increments
\$10,001 and up: \$1000

CONTENTS

1	EVENT ANNOUNCEMENTS	86	JAPANESE CLOCKS
4	ANTIQUES & ARTWORK	90	FRENCH MYSTERY CLOCKS
20	MECHANICAL ANTIQUES & MUSIC	94	EUROPEAN CLOCKS
32	JEWELRY	116	AMERICAN CLOCKS
34	WRIST WATCHES	140	INDEX
37	POCKET WATCHES	142	TERMS AND CONDITIONS
40	DECK WATCHES & CHRONOMETERS	143	VENDOR INFORMATION
45	CARRIAGE & DESK CLOCKS	144	THE CLOCKSMITH DIAL RESTORATION
52	RAINGO FRERES ORRERY	145	DELANEY ANTIQUE CLOCKS
54	RARE FRENCH MANTEL CLOCKS	146	BID FORM
58	TALL CLOCKS & REGULATORS		

Lot 702





700

A large early 20th century enamel Cigars sign, the lettering between ends with decorative shaping and foliate ornament, in white on a blue enamel ground

\$400-\$600

Circa 1900 10in x 70.25in



701

A large early 20th century enamel Ice Cream sign, the lettering between ends with decorative shaping and foliate ornament, in white on a blue enamel ground

\$300-\$500

Circa 1900 10in x 70.25in



702

Attributed to John Haley Bellamy, Kittery Point, Maine, a good carved and painted figural eagle plaque with banner, the left facing figure with white painted surface highlighted in red and blue, and banner reading "Dont Give Up The Ship"

Condition: very good overall, minor accumulated dirt, tip of banner pole with minor wear and loss. A well preserved example of this celebrated carver's work.

\$15000-\$20000

Circa 1880 8.5in x 25.5in x 3.75in



703

Massachusetts, a good early 19th century silk needlework mourning picture, the foreground with a young woman in a Grecian dress at a monument below a chenille yarn willow tree, the memorial base marked "Sacred to the Memory of Mrs. Ann Bass Obt. August 9th, 1818, AET. 46 years" and "May Angels Guard Thy Sleeping Dust", the background with a painted town at the left, and a church at right, a lake, stream and sky in blue watercolor, the landscape and foliage in colored silks, the original eglomise glass mat marked "Wrought By Mary Ann Bass", and contained in a deep, gilt softwood frame. NOTE: Ann (Adams) Bass, was born Apr. 10, 1773 at Brintree, MA and was married Jan. 12, 1797 at Quincy, MA to Josiah Bass (1768-1850). Ann was the daughter of Peter Boyston Adams (1738-1823), a brother of President John Adams (1735-1826). Ann (Adams) Bass died Aug. 9, 1818 at Quincy, MA. The needlework was executed by Ann's daughter, Mary Ann Bass (1804-1883).

Condition: very good overall, a bit dirty and with minor losses to gilding, the silks and paint retaining good color, glass very good, backboard with shrinkage and a bit loose, and now with masking tape seal

\$4000-\$6000

Circa 1820 24in x 24in x 2.75in



704

Charles Theodore Frere, a large oil on canvas evening view of Beni Souef, the foreground with camp featuring camels, tents, and seated Bedouins, against a backdrop of the evening sky over the Nile river, with palm trees and minarets along the shoreline, signed "Th. Frere" and "Beni Souef Egypte" at lower right, and contained in a 19th century bronzed frame with molded gesso ornament

Condition: craquelure, surface a bit dirty, very minor loss/ rub line at lower edge, upper edge with minor line transfer of gold paint, rear of canvas with mark of Paris artist's material's retailer Hardy - Alan, stretcher also marked with scene location and artist's signature, frame with minor losses to gesso, retains a late 19th century partial label from the firm of Horace Blair, Manufacturer of Picture Frames and Easels, 124 Grand Ave., Milwaukee, Wisconsin, frame dimensions listed, stretcher measures 16 x 24.5in

\$4000-\$6000

Circa 1865 25.25in x 34in



705

Jean Antoine Theodore Gudín, France, a mid 19th century oil on canvas, the foreground with a two masted fishing vessel with two figures on board, one speaking to a woman with small child on shore, adjacent to a stick and canvas shelter with campfire, the background with landscape, boats approaching the shore, and evening twilight sky with rising moon, signed lower right, in a period, ornate gilt frame with rococo ornament

\$2000-\$3000

Circa 1860 32in x 41.5in x 4.5in

706

Milton Avey, a graphite on paper "Standing Nude", the female figure before a case piece with broken arch pediment, matted and in a simple silver leaf frame the back with label from Makler Gallery, Philadelphia

\$2000-\$3000

Circa 1934 18.25in x 15in



707

A large 19th century oil on canvas of a shipwreck on a rocky coast, the foreground with broken masts and two figures attempting to rescue a third from the surf, some salvaged provisions at right, the background with a distant castle, a group of figures on a coastal bluff, and threatening sky, contained in an ornate gilt frame

\$800-\$1200

Circa 19th c 35in x 45in x 3.25in



708

Birger Sandzen, "Stony Pasture with Cottonwood Grove", early 20th century lithograph on paper, the view taken from Sandzen's in-laws' farm in Graham County, Kansas, signed lower left, title lower right, in a molded wooden frame, from an edition of 50

\$400-\$600

Circa 1916 21in x 26.5in



709

Joseph Antonio Hekking, a 19th century oil on canvas depicting a moonlit lake, with landscape and castle in the background, signed lower right, in a 20th century antique style gilt frame

\$300-\$500

Circa 19th c 18.5in x 24.5in x 2.25in



710
2 (Two) 19th century Chinese hardwood stands, the first a jichimu and huali incense stand with decorative, openwork brackets and box stretcher, the other a zitan two tier plant stand with carved, stylized cloud brackets and shaped box stretcher, dimensions of plant stand listed

\$1200-\$1600
Circa 19th c 54.5in x 12.25in x 12.25in



711
England, a good mid 19th century Davenport desk, the walnut and figured walnut veneer case with ebonized moldings, sloped writing surface and carved, scroll form supports, the right side with cabinet, the left with four drawers, each with mask carved walnut pull, and interior with elm burl veneered drawers and pigeon hole trim

\$1000-\$1500
Circa mid 19th c 36.75in x 31in x 20.5in

712
Clark's six drawer oak spool cabinet with reverse painted glass drawer inserts, five with black field and one with red field, and finished paneled back board

\$300-\$400
Circa 1880 29in x 22in x 19in

713
A Ningxia runner composed of five squares, each with a central stylized lotus medallion with blue border on a yellow ground, the corners of each square with leafy tendrils, and contained by a brown border

\$600-\$900
Circa 1800 x 26.5in x 121in

714
China, a late 19th century wool kang cover, the colorful, rectangular panel in peach, blue, and gold, with dragons, Chinese symbols, clouds and script on a beige ground, with furled ribbon borders

\$500-\$700
Circa late 19th c x 58in x 79in

715
China, a Ningxia round end saddle rug, the peach field bisected with a yellow cloud-collar band separating the overall design of branches, flower heads and leafy tendrils under four leather-bound apertures, the wide border band featuring Buddhist symbols and abstract flower heads

\$300-\$500
Circa 19th c x 27in x 58in





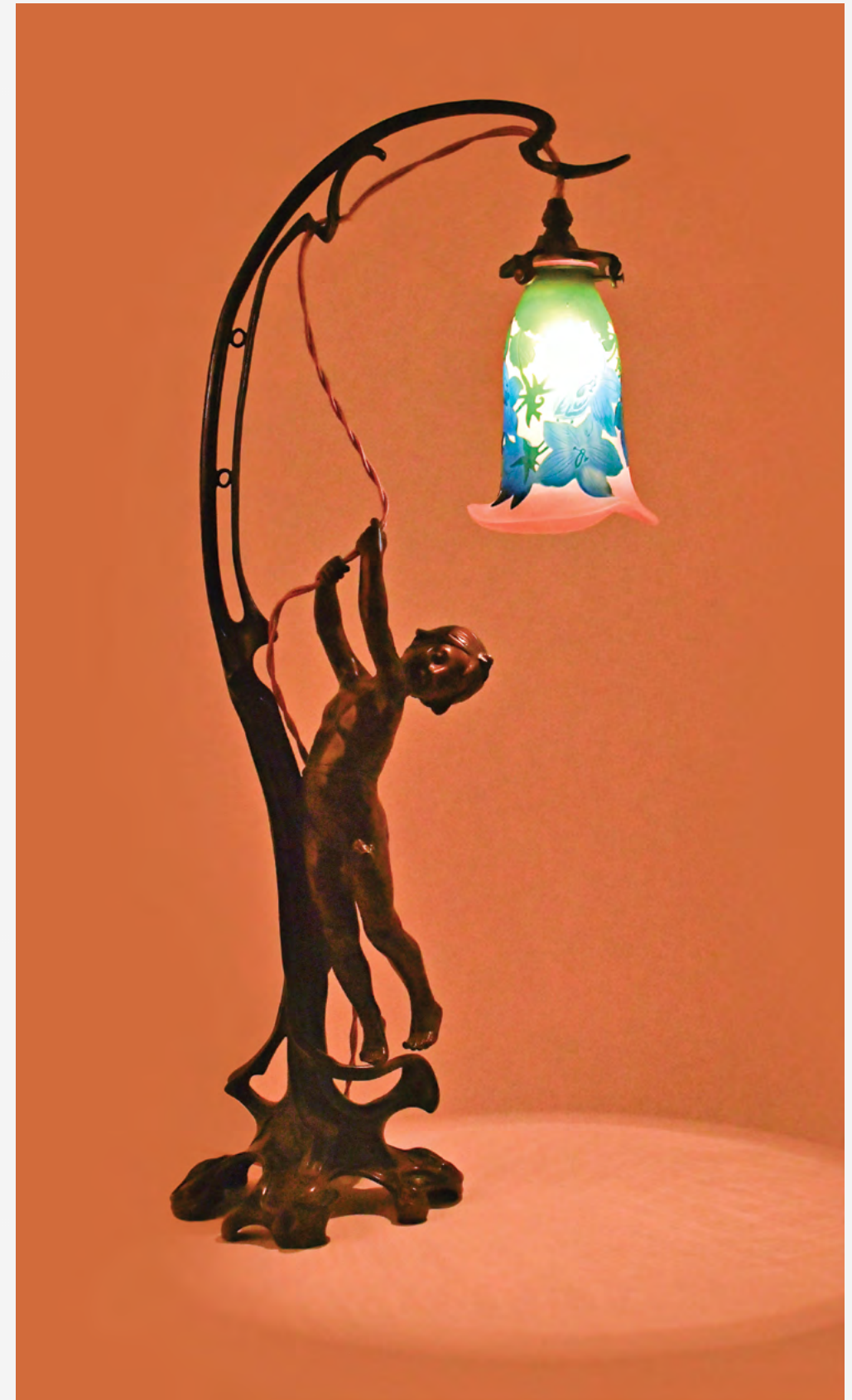
716

Antoine Bofill, Paris, an early 20th century Art Nouveau style patinated bronze table lamp with Galle cameo glass shade, the signed base with free form, cloud like feet with standing figure of a young girl, standing adjacent to an arching, naturalistic tendril and appearing to pull herself up with the lamp cord, the top with fixture and decorative, cameo glass shade signed "Galle"

Condition: very good overall, shade with very small manufacturing flaw near top, cord fraying, working

\$3500-\$5500

Circa 1900 26in x 7in



717



718

**717**

Loetz, Klostermuhle, an attractive silver overlay vase, the green glass with iridescent blue oil spot surface, and applied silver art nouveau ornament featuring irises, the top and base with silver rims

\$500-\$700

Circa 1900 8in x 2.375in

718

Bohemia, an early 20th century art glass vase, the exterior of the transparent vessel with a thin layer of green and yellow glass, and oil spot and swirl decoration

\$100-\$200

Circa early 20th c 10.375in x 5in

719

Sam Sturgeon, California, a cobalt blue "Heron" vase, the background with slightly recessed, dimpled surface, and featuring cypress limbs and herons against a full moon, the uncut surface with iridescent blue finish, the base signed "Sam Sturgeon" and dated 1990

\$100-\$200

Circa 1990 8.75in x 6in

720



722

**720**

Louis C. Tiffany Furnaces Inc., New York, a No. 165 Favrite trumpet form vase, with gilt, textured surface and round, enameled, weighted base, the underside with Tiffany Furnaces marks

\$400-\$600

Circa 1925 13.5in x 6in

721

Shin'ichi, Tokyo, a Showa era silver flower vase, the bulbous body with gilt, repousse flying fish on a textured ground with stylized waves, the bottom marked "Shin'ichi-saku" with original box, also signed

\$400-\$600

Circa mid 20th c 6.75in x 8in

722

Heintz Art Metal Shop, Buffalo, N.Y., an Arts and Crafts bronze and silver overlay vase, the cylindrical body with applied sterling silver daffodils, base signed

\$100-\$200

Circa 1915 12in x 5in

719



721



723



724

**723**

Kinkozan, Japan, a Meiji era ovoid ceramic vase with Moriage ornament featuring two dragons on a ground of stylized cloud and wave patterns, the base with double gourd reserve marked "Dai Nippon Kinkozan Tsukuru"

\$1000-\$1500

Circa late 19th c 15.5in x 9.5in

724

Korea, a 20th century silver basse taille and cloisonné enamel vase, the vessel with flaring foot, bulbous base and slim neck, and decorated with cloisonné floral and foliate forms, on a blue basse taille ground, the base with marks including "Silver" and "99%"

\$100-\$200

Circa 20th c 7.25in x 3.75in

725

2 (Two) decorative sterling silver objects, the first a bottle by George W. Shiebler, the long necked vessel with bulbous body and silver stopper, all with rococo style repousse ornament, the other a Gorham tea caddy, with Chinoiserie rococo repousse ornament

\$400-\$600

Circa early 20th c 10in x 4.75in

726

Liberty & Co., London, a Tudric pewter carriage clock, the hammered case with carrying handle and glazed front with stylized ivy surround, roman numeral dial with mottled blue and green enamel ground, spade and poker hands, and a rectangular, 8 day timepiece movement with lever platform, the back plate marked "Made in France"

\$1200-\$1500

Circa 1900 4.5in x 3.25in x 2.75in

727

3 (Three) 19th century blue slip decorated salt glazed stoneware pieces, the first a two gallon merchant's jug marked "P. Cushman & Co Wines Liquors & c Albany N.Y.:", the next a five gallon churn with floral slip trail ornament, and stamped "E. Whale Boston", and the last a three gallon jug with blue slip bird, stamped "New York Stoneware Co.:", dimensions of churn listed

\$600-\$800

Circa 19th c 15.5in x 11.75in

728

Russia, a mid 19th century silver and niello reliquary cross, with trefoil ends, and central image of Christ on the cross, flanked by images of Mary and St. John, and God the Father above, with tapered cylindrical handle, dated 1852 and with makers mark "AK", "84", and two other incompletely struck marks

\$1000-\$1500

Circa 1852 10in x 5in x 1/2in

726



728



725



727



729

**729**

S. Kirk & Son, Baltimore, a #220 nine inch sterling silver footed Paul Revere bowl with flaring rim, 24.6 Troy oz. TW

\$400-\$600
Circa 20th c

730

2 (Two) pair of 18th century brass candlesticks, the first probably English, lobed base with riveted, knopped column having a faceted, hexagonal transition below the ringed cup with lobed edge, the other also probably English, bell shaped round base with cupids bow edge screwed to a seamed hexagonal, fluted, inverted baluster form column with hexagonal fluted cup, dimensions of the second pair listed

\$300-\$400

Circa 18th century 9.25in x 5in

731

Traveling writing desk in mahogany with brass bound inner and outer edges, brass inlay, inset brass handles, brass medallion in top and large brass escutcheon, fabric writing surface, six small compartments and a large compartment under writing surface for accessories and materials

\$400-\$600

Circa 1820 18in x 10.5in x 7in

730



731



732

**732**

Traveling writing desk in rosewood with brass reinforced corners, brass medallion with monogram and design with arms supporting a thistle in top and large brass escutcheon, several small compartments and and two brass rosette and bail handles, one of which is attached to a side drawer

\$300-\$400

Circa 1830 18.75in x 9.75in x 6in

733

England, a George III mahogany dressing glass, footed base with three drawers surmounted by a molded frame with carved and gilded inner edge, and supported by two cock beaded, tapered posts with brass finials

\$200-\$400

Circa late 18th c 22in x 14.75in x 8in

734

2 (Two) canes, the first with hardwood shaft, ivory "L" handle carved with grapes and grape leaves, 35.25in., the other with ebonized shaft and carved ivory dragon head form handle, 38in

\$400-\$600

Circa 19th - 20th c

734



733



735

**735**

2 (Two) canes, the first marked "28th Annual Encampment GAR Sept. 20th 1895 Washington DC", ebonized hardwood shaft and cast handle with star, eagle, crossed cannons, and portrait of Ulysses S. Grant, 36in., the other a tin campaign torch with paper label featuring portraits of William McKinley and Garret Hobart, the hollow shaft acting as a fuel reservoir, 33.75in.

\$300-\$500*Circa late 19th c***736**

A good carved ebony hound head cane, the tapered shaft with leaf, crosshatch, and twist carving, the hound head form handle with bone or ivory eyes, 34.25in

\$300-\$400*Circa 20th c***737**

A 19th or early 20th century engineers model horizontal steam engine, of red painted iron, steel and brass construction with rosewood sheathed cylinder, and mounted to a red painted wooden base

\$600-\$900*Circa 19th - early 20th c 10in x 25in x 12in*

737

**738**

An early 20th century engineers model vertical steam engine, of brass, iron and steel construction, the double frame with top mounted cylinder and mounted to a cast iron base

\$400-\$600*Circa early 20th c 11in x 8.5in x 5.5in***739**

A small lot including a late 19th century R. & J. Beck monocular microscope with box and accessories, together with two Pennsylvania Railroad boxes containing sixty nine lantern slides showing valve schematics, some marked 'Westinghouse Air Brake Co', microscope box dimensions listed

\$150-\$250*Circa 19th - 20th c 16.25in x 9.625in x 9.25in*

738



739





740

Attributed to Leopold Lambert, a girl with yarn and cat automaton, the brown eyed, blond haired figure with bisque head, sleep eyes, pierced ears, and wearing a colorful silk dress, her left hand holding a basket with scissors, yarn, and needlework in progress, her right with dangling ball of yarn, a cold painted bronze or iron cat at her feet watching the ball, and occasionally making a sudden movement toward it, all on a red velvet covered rectangular base concealing the movement with single tune music box, with "LB" winding key, movements include head nodding and turning left and right, blinking eyes, the left arm raised and lowered from the shoulder, the right raised and lowered from the elbow, and the cat slowly moving toward the front edge of the base, and then quickly moving back toward the figure

Condition: working well, dress with minor deterioration and splits, right shoulder worn through where the mechanism contacts the fabric, velvet on base worn

\$4000-\$6000

Circa 1900 23in x 9in x 12in



741

Attributed to Rouillet & Decamps, France, a late 19th century "Turkish Dancer" automaton, with bisque head, shoulder plate and arms, the head signed "Depose Tete Jumeau", and with pierced ears, blue glass eyes, blond hair, and closed mouth, the figure dressed in colorful costume and shaking a tambourine held in her left hand, her right arm moving up and down from the shoulder, and rocking her head left and right while a tune plays, all on a burgundy velvet covered base with turned feet, containing the clockwork movement and single air music box

Condition: clothing with losses and imperfections, base with newer covering, bisque components good, automata and music functioning

\$1500-\$2500

Circa 1890 20.25in x 6in x 6in

742

**742**

Attributed to Rouillet & Decamps, a Bubble Blowing Polar Bear automaton, the seated figure with mohair covered body, glass eyes, and composition paws and feet, holding a pewter bowl at his left, with bubble wand at right, lowering his head and right paw to dip the wand, and then raising the same, and putting the wand to his mouth to blow bubbles, all on a velvet covered base containing the clockwork automaton movement, bellows, and single air music box

\$1200-\$1600*Circa 1920 17in x 9.5in x 9.25in*

743

**743**

A 20th century automaton based on Rouillet & Decamps "Clown on Full Moon", the molded plaster moon with open mouth, wagging tongue, and eyes moving side to side, surmounted by a female figure with bisque head, dressed in silk clothing with ruffed collar and cuffs, occasionally turning her head, strumming a balalaika, and moving her right leg to and fro, taunting the moon with a beetle suspended from her right toe, the movement controlling the motions concealed within the moon and driving a single tune music box marked "JEC 28", all on a red velvet lined base with conforming transparent acrylic cover

\$1000-\$1500*Circa 1985 23.5in x 10in x 10in*

744

**744**

Jean Farkas, France, a 20th century Conjurer automaton, the turbaned figure in exotic costume, standing behind a red - draped table and holding two cones, turning his head while lifting and lowering the cones, revealing the objects beneath either changing position or vanishing completely, all on a burgundy velvet covered base on turned feet, containing the clockwork movement driving the figure, and a two tune music box.

\$800-\$1200*Circa 1970 20in x 8in x 8in*

745

**745**

Jean Farkas, France, a Smoking Turk automaton, the turbaned figure with composition head and arms, seated on a large cushion with a sword at his waist and hookah at his right, his head turning, his right hand raising the mouthpiece to his lips, and the left waving a feather fan as he exhales, all on a velvet covered base concealing the movement, bellows, and music box, playing a single tune while the figure smokes

\$800-\$1200*Circa 1970 12.25in x 8in x 8in*

746

**746**

Mechanische Musikwerke Manufaktur, (MMM), Germany, a late 20th century singing bird box, the foliate engraved silver plated case with canted corners, the top with oval cover concealing a bird with brightly colored feathers, appearing and performing on demand

\$1000-\$1500*Circa late 20th c 1.875in x 4.375in x 2.875in*

747

**747**

Attributed to Karl Griesbaum, a mid 20th century "Fox Hunter" whistler, the portly, moustachioed gent with boots and spurs, a red coat, blue, patterned cravat, and wearing a top hat, the mechanism concealed within his body, whistling a tune and moving his head from side to side when activated

\$800-\$1200*Circa 1950 14in x 4.75in x 4in*

748



750



748

Attributed to Karl Griesbaum, an early 20th century "Father Christmas" whistler, the figure with crown, beard, and long coat, the pockets overflowing with gifts, and a sack over his left shoulder, and a 30 hour shield clock under his right arm, the movement concealed within his body, whistling a tune and moving the head side to side when activated

\$700-\$1000

Circa 1930 12.75in x 6.75in x 4.5in

749

Attributed to Karl Griesbaum, an early 20th century "Old Friends" whistler, the two carved figures with colorful clothing, the movements concealed within their bodies, each taking a turn whistling a tune and moving his head from side to side when activated

\$500-\$700

Circa 1935 13.75in x 6.375in x 2.875in

750

Germany, an early 20th century carved whistler, the male figure with kerchief tied at his neck and wearing a bowler hat, his right hand in his pocket, the left arm clutching a sack, and with toes visible through his shoes, the base marked with the carver's initials, the mechanism concealed within his body, whistling a tune and moving his head from side to side when activated

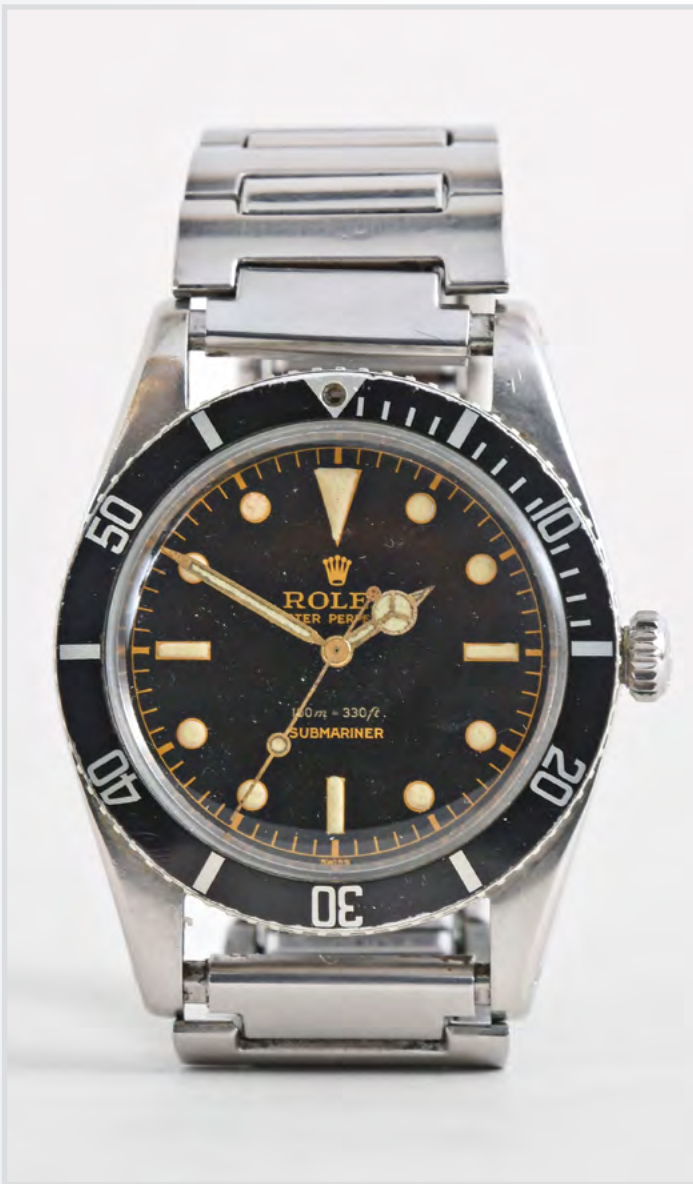
\$400-\$600

Circa 1930 13.25in x 3.625in x 3.25in

749



Seeking Fine Consignments



Rolex, Geneva, a rare Submariner ref. 6536-1
wrist watch, 25 jewels, automatic winding
April 2021 **Sold \$16,250**



Andre Romain Guilmet, Paris, a rare and unusual
industrial torsion pendulum lighthouse clock
April 2021 **Sold \$16,800**

751

**751**

Polyphon Musicwerk, Leipzig, Germany, floor standing disc music box, playing 15.5 inch discs, robust dual comb movement starting when triggered by lever, the case of mixed walnut and mahogany veneers and solids, all resting on a matching base cabinet with disc storage, includes one disc

\$1500-\$2000

Circa 1890 71.5in x 25in x 15in

752

Switzerland, for H. Gautschi & Sons, Philadelphia, an 18 inch cylinder music box, the walnut veneered case with ebonized moldings, flattened, elongated pyramid ornaments, heavy cast carrying handles, and drawer in the base containing two additional cylinders, the interior with stamped brass plate engraved "No. 14", and cast plaque with the retailers name and location, and nickel plated mechanism wound through the right side of the case, each cylinder with six tunes

\$2000-\$3000

Circa 1900 18in x 39.5in x 20in

753

Mermod Freres, Switzerland, a Stella "No. 150" 15 1/2 inch disc music box, the footed mahogany case with carved rope, leaf and dart, and egg and dart moldings, and stepped, molded top, the inside of the lid with framed recessed panel with Stella logo, the interior with long bed plate movement and duplex comb, with moderator for controlling the speed of rotation, with six discs and crank, serial #53245

\$1500-\$2000

Circa 1900 13in x 27in x 21.5in

754

Olympia Music Box Co., New York, N.Y., a model 5B coin operated disc music box with matching base, the mahogany case with intricate chip carved bands, carved moldings, stepped, molded top, and a plunger for depositing the coin and starting the box, interior of the top with a lithograph of a winter landscape with paper birch next to a stream, and with metal "Olympia 5B" tag, the interior with coin receiver at front right, and short bed plate movement with two combs, with winding crank, resting on a similarly carved and molded base, with drawer containing 17 discs, serial #17058

\$1200-\$1500

Circa 1900 18.5in x 22.5in x 20in

753



754



752



755



755

Symphonion Manufacturing Co., Bradley Beach, N.J., an "Imperial Symphonion" 13 5/8 inch disc music box, the walnut and walnut veneer case with molded base on turned feet, the corners with baluster form columns having gadrooned, vasiform bases, sides with carrying handles, and the case top with sloping edge, lion mask pull, and molded, framed center with floral marquetry, the inside of the cover with lithograph featuring children in a landscape, two playing instruments and one singing as the others look on, the movement with long bed plate and two combs, with crank and one disc

\$1200-\$1500

Circa 1900 11.25in x 21.75in x 18in

756

Switzerland, a good "Drums Bells Castagnets" 17 1/2 inch, 12 air cylinder music box, the case with rosewood veneer, line inlays, and multicolor music themed marquetry trophy, inside of lid with chromolithograph tune card featuring children in a landscape, either playing instruments or dancing, nickel plated movement with cylinder and combs at front, the back with six engraved bells with polychrome enameled, floral form retaining nuts and enamelled bee and butterfly strikers, flanked by a snare drum and castagnets, with levers to silence any or all of the percussion instruments

\$1000-\$1500

Circa 1880 10.5in x 30.75in x 14.25in

757



757

The Regina Music Box Company, Rahway, N.J., a mahogany 15 1/2 inch disc music box, the case on short turned feet below a carved leaf and dart base molding, the sides with rectangular, molded faux panels, corners with carved bead and lozenge molding, and the stepped lid with deep cavetto molding and bead trimmed cushion top, the inside with framed lithograph of a woman with lyre surrounded by instrument playing putti, and iron bed plate with two combs and movement, a printed celluloid tag stating "Kipp Bros. Co. General Agents for Regina Music Box Co., Indianapolis, Ind.", with one disc and winding crank, the vertically oriented winding arbor located to the right inside the case, serial #22295

\$1000-\$1500

Circa 1900 12.75in x 22.75in x 20.5in

758

The Regina Music Box Company, Rahway, N.J., a mahogany 15 1/2 inch disc music box, the case on short turned feet below a base molding with narrow rope carving, the sides with applied rope carved molding below the stepped, molded top, the inside with framed lithograph of a woman under glass with lyre surrounded by instrument playing putti, and iron bed plate with two combs and movement, with one disc and winding crank, serial #17419

\$800-\$1200

Circa 1900 10.5in x 21.325in x 19in

758



756



759

A 20th century custom made 14 karat gold bracelet set with turquoise and pearls, the heavy, hollow, reticulated piece with bright cut patterns surrounding the various gems, 2.75in OD, 44.4g TW

\$1000-\$1200

Circa mid 20th c

760

A lot of 14 karat gold jewelry including three bracelets, one with alternating large and small faceted beads, another with rope style chain, and the last a narrow bangle with floral ornament, together with a 19.5in watch chain, lacking hooks and fob chain, 38g TW

\$900-\$1100

Circa 20th c

761

A late Victorian 14 karat gold garter bracelet, very fine mesh with oval, black and white enamel decorated slide and matching end, width .625in, length approximately 7.5in, 30.3g TW

\$800-\$1200

Circa 1880

759



760



761



762



762

A mid 20th century 14 karat yellow gold bracelet composed of unusual, interlocking double links, and gold five peso coin contained in a ring, with three extra links, 6.375in, 25.8g TW

\$600-\$750

Circa 1960

763

A lot of 14 karat gold jewelry, including five rings, one with elliptical opal, another with faceted oval citrine, one with turquoise and pearls, another with pearls, and one with tiny opals, a pair of cuff links and a button, and two pins, one with a violin, the other with a lyre, 27.3g TW

\$550-\$700

Circa 20th c

764



763



765

764

An attractive mid 20th century 14 karat yellow gold oval bracelet, set with faceted amethyst, pearls, and a central diamond, the gems separated by pierced, leaf form white gold ornaments, 2.5in x 2.125in x 3/16in, 12.4g TW

\$300-\$400

Circa 1940

765

2 (Two) antique cigarette cases, the first in turtle shell with silver monogram, hinges and catch, the other in ivory with decorative, diamond set platinum or white gold hinges and catch, measurements of first case listed

\$200-\$300

Circa 1900 4.25in x 2.75in x .625in





766

Rolex Watch Co., Switzerland, a ref. 5513 "Submariner" with gilt underline dial, automatic winding, 26 jewels, cal. 1530 movement with lever escapement in a stainless steel case with pointed crown guards, rotating bezel, and ref. 7206 Oyster bracelet with 58 ends, and gilt, black underline dial with luminous baton, dot and triangle markers, and Mercedes hands, 40mm, serial #982913, with original crown and crystal

Condition: CASE: Polished; Minor bumps and dings; Back with a few dings; Bezel insert faded to steel gray; Acrylic crystal with fine scratches; Original crystal included with lot; Crown replaced, original 7mm crown without twinlock marking included with lot; Bracelet with wear and fine scratches. DIAL: Good, with fine spotting; 4:00 lume plot with small surface loss. HANDS: With dirt and minor oxide; Hour hand gold plated, minute and seconds are polished steel. MOVEMENT PLATES: A bit dirty; Very fine marks and scratches on plate; Automatic bridge screws with very minor losses to blue. MOVEMENT FUNCTION: Running order (winds, sets and ticks).

\$6000-\$8000

Circa 1963



767

Rolex Watch Co., Switzerland, a 14 karat gold ref. 1503 "Oyster Perpetual Date" wrist watch, automatic winding, 26 jewels, adjusted to 5 positions and temperature rhodium plate movement with lever escapement and freesprung balance, in a 14 karat yellow gold case with fluted bezel, black lined baton marker silver sunburst dial with date aperture at 3:00, and luminous baton hands, serial #3522858, 45.4g TW

\$3000-\$4000

Circa 1973



768

Gallet, Switzerland, a "Jim Clark" Multi-chron 12 wrist chronograph, 17 jewels, manual winding, Excelsior Park cal. 40 rhodium plated movement with lever escapement, in a round, stainless steel case with leather strap, luminous arabic numeral black dial with minute and hour registers at 3 and 6:00, and constant seconds at 9:00, luminous blued steel hands, serial #951680, 36mm

\$1200-\$1600

Circa 1960



769

Longines, Switzerland, a good ref. 8226 - 4 "Paul Newman" wrist chronograph, 17 jewels, manual winding rhodium plated Valjoux cal. 723 movement with lever escapement in a large stainless steel tonneau case with leather strap, baton marker reverse panda dial with minute and hour registers at 3 and 6:00, with constant seconds at 9:00, and outer red and white KMH bezel, polished steel Mercedes hands, serial #15631003, 42.5mm x 43.5mm

\$1200-\$1600

Circa 1970



770

Omega, Switzerland, a good ref. 166.072 “Memomatic” wrist alarm, 19 jewels, automatic winding, cal. 980 gilt plate movement with lever escapement in a stainless steel tonneau case with leather strap, baton marker gray and black dial with date aperture at 3:00, and center with rotating disc and ring for precise setting of alarm hour and minute, luminous white painted baton hands and orange sweep seconds hand, serial #30010005, 40mm x 43mm

\$1200-\$1500
Circa 1970



771

Omega, Switzerland, a ref. 145.018 “DeVille” wrist chronograph, 17 jewels, manual winding cal. 861 gilt plate movement with lever escapement, in a gold plated case with ref. 1069 bracelet, baton marker silvered dial with minute and hour registers at 3 and 6:00, and constant seconds at 9:00, luminous baton hands, serial #28080577, 34mm

\$900-\$1200
Circa 1970



772

Wakmann Watch Co., Switzerland, a mid 20th century wrist chronograph, 17 jewels, manual winding, gilt plate Valjoux cal. 72 movement with lever escapement and monometallic balance with Breguet overcoil hairspring in a round, stainless steel case with leather strap, arabic numeral silvered dial with minute and hour registers at 3 and 6:00, and constant seconds at 9:00, with peripheral red and blue tachymetre scale, and gilt alpha hands, 36mm

\$800-\$1200
Circa 1955

773

4 (Four) mid 20th century Rolex watch bracelets, including two Rolex USA Oysters in stainless steel, a Rolex USA Jubilee in stainless steel, and a ref. 78340 Oyster in stainless steel and 14 karat gold

\$1300-\$1500
Circa 20th c



774

Patek, Philippe & Co., Geneva, for Albert Hansen, Seattle, a man’s gold pocket watch, 18 jewels, stem wind and set, adjusted, cotes de Geneve decorated nickel plate movement with lever escapement, cut bimetallic balance, wolf’s tooth winding, and snail cam micrometric regulator in a 14 karat, yellow gold, plain polished hunting case with Jurgensen lips, engraved presentation on gold cuvette, and glazed observation cuvette, outer red 5-minute markers, single sunk white enamel dial with blued steel whip and spade hands, serial #100179, 51mm, 116.3g TW

\$2000-\$3000
Circa 1895



775

Hamilton Watch Co., Lancaster, Penn., a pendant setting grade “951” pocket watch, 16 size, 23 jewels, stem wind and set, adjusted to 5 positions, temperature and isochronism, parallel line damascened nickel bar movement with lever escapement, cut bimetallic balance, gold jewel settings, gold timing screws, gold wheel train, and whiplash micrometric regulator in a white gold filled, snap back and bezel, engraved open face case, arabic numeral, outer red 5-minute markers, double sunk white enamel dial, plum colored steel spade and whip hands, serial #81939. A very rare timepiece - Hamilton produced only 44 of the pendant setting 951.

\$3000-\$5000
Circa 1910





776



777

776

E. Howard & Co., Boston, Mass., a gold cased series III pocket watch, N size, 15 jewels, key wind and set gilt plate movement with lever escapement, cut bimetallic balance with gold timing screws, Reed patent safety barrel with maintaining power, Geneva stops, and Mershons patent regulator, in an 18 karat yellow gold engine turned and engraved Keller & Untermeyer hunting case, the cuvette engraved “Presented to J.J. Spearman by his Friends at Wheatland Oct. 3d 1870”, roman numeral, single sunk white enamel dial with blued steel spade hands, serial #22402, 147.7g TW

\$2500-\$3000 Circa 1870

777

American Waltham Watch Co., Waltham, Mass., a Civil War era “Appleton, Tracy & Co.” pocket watch, 18 size, 15 jewels, key wind and set gilt plate movement, with lever escapement and gold balance, in a 14 karat, yellow gold, engine turned and engraved hunting case, with monogrammed cartouche on front cover, and roman numeral, single sunk white enamel dial with blued steel hands, serial #53805, 130g TW

\$1600-\$2200 Circa 1862



778

American Waltham Watch Co., Waltham, Mass., a model 1899 “Riverside Maximus”, 16 size, 23 jewels, stem wind and set, adjusted, damascened nickel plate movement with lever escapement, diamond endstones, cut bimetallic balance, gold jewel settings, gold timing screws, and whiplash micrometric regulator, in an 18 karat, hinged back and bezel, plain polished open face case, arabic numeral, outer red 5-minute markers, double sunk white enamel dial with “Waltham” in script, blued steel whip and spade hands, serial #10587631, 106.6g TW

\$1600-\$1900 Circa 1900



779

American Waltham Watch Co., Waltham, Mass., a model 1899 “Riverside Maximus”, 16 size, 21 jewels, stem wind and set, adjusted, damascened nickel plate movement with lever escapement, diamond endstones, cut bimetallic balance, gold jewel settings, gold timing screws, and Church micrometric regulator, in a 14 karat, hinged back and bezel, reeded edge, engine turned and engraved open face case, the back with monogrammed cartouche, arabic numeral, outer red 5-minute markers, double sunk white enamel dial with “Waltham” in script and “A.W.W.Co.” above the seconds bit, blued steel spade hands, serial #9524185, 107.8g TW

\$1400-\$1700 Circa 1900



780

Reid, Ball Alley, Lombard St., London, an early 19th century pocket chronometer, key wind and set, 15 jewels, gilt full plate movement with Earnshaw’s escapement, the detent with Pennington type dovetailed foot, and freesprung brass balance with wedge shaped weights and helical balance spring in an associated silver plated brass pair case, roman numeral white enamel dial marked “Chronometer”, gold spade and poker hands, 59mm, with steel chain

\$400-\$600 Circa 1820



781

Bonnicksen, Coventry, for Evan Roberts, 30 St. Georges Square, London, a 52 1/2 minute karrusel deck watch with box, stem wind and pin set, 15 jewels, gilt 3/4 plate movement with lever escapement, and freesprung, cut bimetallic balance with gold timing screws in a sterling silver, hinged back and snap bezel open face case with Chester hallmark and date letter for the year 1895, and case makers mark "CH", roman numeral, single sunk white enamel dial with blued steel spade and whip hands, serial #20797, 57mm, contained in a mahogany box with glazed brass, screw bezel holder, and plaque marked "Evan Roberts 20797 C / \ W"

Condition: CASE: A few dings and scratches, edge of back cover at pendant; Fine scratches on outer surface of case; Very fine scratches on inner surface of case; Bow pivots freely; Precious metal content marked. DIAL: Hairline from seconds bit to 11:15, and one from hairline toward 1:30; Raking light reveals evidence of signature and broad arrow below 12:00. HANDS: Minor bends. MOVEMENT PLATES: Numerous fine scratches on plate; A few slightly heavier scratches at bridge screw adjacent to "Evan"; Minor gouging at case screws; Faint spotting and staining MOVEMENT FUNCTION: Running order (winds, sets and ticks). Box with small nails in perimeter of top; minor abrasion, scratching, and staining at hinge

\$2500-\$3000

2.375in x 3.75in x 4.625in



782

A. Johanssen & Co., London, a good early 20th century freesprung chronometer watch with box, stem wind and pin set, 19 jewels, adjusted to 5 positions and isochronism, gilt 3/4 plate movement with lever escapement and freesprung bimetallic balance with gold timing screws in a sterling silver, hinged back and snap bezel open face case, the back engraved "H.S. 2", and with London hallmark, date letter for the year 1912, and makers mark "A.T.O.", signed, roman numeral, single sunk white enamel dial, blued steel spade and whip hands, serial #6997, contained in a three tier mahogany box with glazed brass, screw bezel cylinder and ID plaque with maker, serial number, and broad arrow mark

Condition: CASE: Very fine scratches and a few tiny dings; Minor dirt and tarnish; Precious metal content marked. DIAL: Very good. HANDS: Very good. MOVEMENT PLATES: A bit of dirt and oil residue; A few fine scratches. MOVEMENT FUNCTION: Running order (winds, sets and ticks). Box now lacking hinge between bottom and mid section, glued together; Lock removed, key hole filled; hinge loose; Dings and scratches; Small spot of adhesive residue.

\$1800-\$2500



783

**783**

Charles Frodsham, London, a mid 19th century two day marine chronometer, 11 jewel, free sprung fusee movement with Earnshaw's escapement, cut bimetallic chronometer balance with blued, helical balance spring and diamond endstone, signed roman numeral silvered dial with wind indicator and blued steel hands, in a gimballed brass bowl with shuttered winding aperture, serial #2596, housed in a three tier mahogany box with brass furniture and with larger protective oak box

\$1500-\$2000*Circa 1860***784**

John Poole, London, for John Clark, Greenock, a two day marine chronometer, 11 jewel brass movement with spotted plates, Earnshaw's escapement, the detent with dovetailed, Pennington type foot, cut bimetallic balance with wedge shaped weights, and blued helical balance spring, roman numeral silvered dial with subsidiary chapters for seconds and state of winding, and gold spade and poker hands, in a gimballed brass bowl, and contained in a mahogany box with brass campaign hardware, the front with inset ivory plaque signed "French 0/8768, with winding key, serial #823

\$800-\$1200*Circa 1860 6.125in x 6.75in x 6.625in*

784

**785**

E. Dent, London, a pattern 20 binnacle with boat compass, dovetailed mahogany case with hinged door and pyramidal, glazed top, the back marked "Patt. 20 O.T.", a brass enclosure containing a lamp at the right, and a shutter at left, the top with brass and turned wooden carrying handle, containing a gimbal with wet card compass, and printed instructions attached to the inside of the door

\$600-\$900*Circa 1900 13in x 10.5in x 8.5in***786**

Hamilton Watch Co., Lancaster, Penn., model 21 marine chronometer, 14 jewel, key wind and set fusee movement with grained nickel plates, spring detent escapement, large mono-metallic balance and helical balance spring, arabic numeral metal dial with wind indicator, black painted steel spade and poker hands, in a gimballed brass bowl, and contained in a three tier mahogany box with brass furniture, and padded mahogany outer box with leather strap, serial #2E12868

\$1000-\$1500*Circa 1945 9.25in x 12.75in x 10.375in***787**

Hamilton Watch Co., Lancaster, Penn., a good model 22 chronometer watch with boxes, 35 size, 21 jewels, stem wind, pin set, adjusted to 6 positions and temperature, straight line damascened nickel plate movement with lever escapement and micrometric regulator, arabic numeral silvered metal dial with wind indicator and black steel spade and poker hands, contained in a gimballed bowl, and mounted in a mahogany three tier box, and with padded cherry outer box with leather strap, movement marked "U.S. Navy Bu. Ships", serial #2F5018

\$900-\$1200*Circa 1942 7.75in x 11in x 9in***788**

Hamilton Watch Co., Lancaster, Penn., model 21 marine Chronometer, 14 jewel, key wind and set fusee movement with straight line damascened nickel plates, spring detent escapement, large mono-metallic balance and helical balance spring, and arabic numeral metal dial with wind indicator, black steel spade and poker hands, with gimballed brass bowl, contained in a three tier mahogany box with brass furniture, serial #2E182

\$900-\$1200*Circa 1940 7.5in x 7.5in x 7.5in*

785



786



787



788



789



789

Hamilton Watch Co., Lancaster, Penn., a model 22 chronometer watch with wind indicator, 35 size, 21 jewels, stem wind, pin set, adjusted to 6 positions and temperature, straight line damascened nickel plate movement, with lever escapement and micrometric regulator, arabic numeral silvered metal dial, black steel spade and poker hands, serial #2F20358, the timepiece contained in mahogany boxes, the inner with viewing aperture

\$800-\$1100

Circa 1945 3.75in x 9in x 8.25in

790

Elgin National Watch Co. Elgin, Illinois, a boxed "Father Time" deck watch with wind indicator, grade 367, 18 size, freesprung, 21 jewel damascened nickel movement with cut bimetallic balance, gold timing screws, and gold jewel settings, roman numeral, double sunk white enamel dial, blued steel spade and poker hands, contained in a gimballed brass bowl, with three tier mahogany box, serial #14813127, the bottom of the bowl with United States Shipping Board engraving

790



791



\$600-\$800

Circa 1910 5in x 5in x 5in

791

Elgin National Watch Co., Elgin, Illinois, a boxed grade 581 "B.W.Raymond" deck watch for the British navy, stem wind and set 22 jewels, adjusted to five positions, temperature and isochronism, straight line damascened nickel plate movement with lever escapement, cut bimetallic invar balance, gold jewel settings and micrometric regulator in a nickel, screw back and bezel open face case, the back marked "H.S. 3" and "56258", twelve hour, arabic numeral white enamel dial with blued steel spade, poker, and sweep seconds hands, serial #41756258, in a hinged mahogany box with glazed viewing aperture

\$400-\$600

Circa 1943 1.5in x 3.625in x 5in

792

Spaulding & Co., Paris, a 20th century minute repeating travel clock, with reeded, silver gilt case, the top with large round repeat pusher, roman numeral gilt dial with blued steel hands, and 8 day movement with lever escapement, repeating the last hour, quarter, and minute on demand, contained in it's original leather covered, burgundy silk and velvet lined travel box, outer box dimensions listed

\$2000-\$3000

Circa 20th c 3.375in x 3in x 2.25in



792

793

Austria, an unusual 19th century grand sonnerie alarm clock, the footed base with patinated rockwork, gilt foliage, and addorsed, gilt hounds supporting the cylindrical case with decorative bands and floral mounts, surmounted by a gilt and patinated, seated figure blowing a coiled hunting horn, arabic numeral white enamel dial with steel arrow hands, and four train, 30 hour movement with cylinder platform and alarm, and two bells, sounding the hours and quarters in passing, and repeating the last hour and quarter on demand

\$1000-\$1500

Circa 1830 9.25in x 5in x 2.5in



793

794

Bechot, France, an unusual mid 19th century gilt bronze mounted cut glass mantel clock, the oval, cast, foliate ornamented base on compressed ball feet with foliate band, and supporting a conforming, cut and reeded transparent glass plinth, surmounted by a pair of overflowing, ormolu cornucopias, cradling the transparent, round clock case, with cutting to match the plinth, ormolu floral bezel and gilt, roman numeral dial with engine turned center, blued steel Breguet style hands, and 8 day, two train pendule de Paris movement signed "Bechot", with silk thread suspension, and striking the hours and half hour on a bell

\$1000-\$1500

Circa mid 19th c 13.5in x 6.25in x 4.75in



794

795



796



797



798

**795**

E.F. Caldwell, New York, a very decorative triple calendar desk clock, the cast, cylindrical case with bellflower ornament on a red velvet ground, arabic numeral white enamel dial displaying the date at 12:00, month at 3:00, phases of the moon and constant seconds at 6:00, and day of the week at 9:00, blued steel hands, and 8 day Swiss movement with lever escapement and cut bimetallic balance, signed "Rama Watch Co.", with original key

\$1000-\$1500

Circa 1920 1.75in x 3.25in

796

Louis C. Tiffany Furnaces Inc., New York, a model 651 desk clock, the gilt, sharp Gothic style case with textured finish and the front with fuschia enamel accents, signed, arabic numeral gilt dial with blued steel spade and whip hands, and 8 day Chelsea movement with lever escapement, serial #154963

\$1000-\$2000

Circa 1925 7.5in x 5.75in x 2.625in

797

Jaeger LeCoultre, Switzerland, an Atmos "Marina" shelf clock, the gilt brass case with thick, bevelled lucite panels, the front and sides with fish, coral, seaweed, starfish and anemone embedded in the plastic panes, white dial with dart and arabic numeral markers, and dauphine hands, jewelled movement with lever escapement and slow beating torsion pendulum

\$800-\$1200

Circa 1965 9in x 7in x 5.25in

798

LeCoultre & Cie, Switzerland, for Gruen Guild, "Atmos" clock, 15 jewel gilt caliber 528 movement with gilt torsion pendulum, round, white painted dial with painted Roman numerals and gilt arrow markers, gilt dauphine hands with black tips, contained in a walnut veneered case with glazed, arched gilt frames

\$500-\$700

Circa 1960 10in x 8.5in x 6.5in



799

James McCabe, Royal Exchange, London, a fine and rare hour repeating carriage clock, the gilt brass case beautifully engraved with floral and foliate motifs on a matted ground, and set with four thick bevelled glasses, and back with shuttered winding and setting apertures, and strike - silent slide, signed roman numeral electroformed dial with floral and foliate ornament and blued steel fleur de lys hands, signed, two train fusee movement with lever platform, striking the hours on a blued steel gong, and repeating the last hour on demand, serial #2836, the case bottom with label of Camerer, Cuss & Co.

Condition: case with minor dirt, glasses good, dial and hands very good, movement clean and running well, good balance amplitude, minor staining on barrels from chain lubricant, striking and repeating correctly, exterior portion of strike silent slide replaced. A very good example of the work of this eminent horological firm.

\$14000-\$18000

Circa 1855 7.5in x 4.125in x 3.25in



800
 Comminges, 62 Palais Royal, Paris, an unusual, early 19th century grand sonnerie striking carriage clock with spring detent escape-
 ment and travel case, the multi part brass case on bracket feet and with five beveled glasses, and the top with folding handle, signed,
 silvered roman numeral dial displaying seconds below 12:00, blued steel Breguet style hands and alarm indicator, 8 day, three train
 movement wound through the dial and with spring detent escapement, vertically oriented balance behind the back plate, exposing
 the working escapement to full view through the top glass, sounding Viennese hours and quarters on two bells, and repeating the
 last hour and quarter on demand, with leather bound, gilt stamped travel case, dimensions of clock listed

Condition: case polished and lacquered, right side glass with chips at upper corners, and small loss at lower left, top glass with minor
 loss at front right, hole in left side glass does not align with alarm setting square, dial resilvered, dial engraving with losses to infill,
 tip of hour hand broken, movement with spotting and staining, running, striking and repeating correctly, alarm train functional but
 sounds without regard to the position of the indicator, would benefit from service, bell stand loose, box with minor losses and scuff-
 ing to leather, right hinge detached, door missing, lining with dirt and wear

\$4000-\$5000
 Circa 1820 7.375in x 4.5in x 3.5in



801
 Ellicott, London, an unusual, small, gilt bronze mantel clock, the architectural case with canted, outset pilaster corners and pagoda
 top and resting on acanthus ornamented urn form feet, the base and pilasters with recessed panels containing gilt, foliate mounts,
 the front with floral festoon and central medallion above the base, and below the round, roman numeral white enamel dial, and cen-
 tral female mask with flanking foliate drops above 12:00, all surmounted by a festooned urn finial, and flanking, baluster form finials
 atop the pilasters, case sides with cast, foliate fret and central medallion, 8 day, two train, six pillar fusee movement signed "Ellicott
 London" with engraved back plate, verge escapement and bob pendulum, striking the hours on a bell, and repeating the last hour on
 demand

Condition: case dirty, gilding with minor wear, central urn finial screw replaced, bezel lock soldered in place, vertical ornament for
 concealing bezel lock keyhole missing, rear door lock missing, two screws for retaining the case bottom missing, dial with a few faint
 hairlines and minor chip above 12:00, hands with minor bends, movement very dirty, verge replaced, pendulum replaced, time main-
 spring broken, will run with pressure on train, striking functional, needs service

\$3000-\$4000
 Circa 1770 12in x 7in x 5in

802

An interesting cylindrical table clock, the case with gilt, circular rims joined by six baluster form pillars and containing a transparent glass cylinder, roman numeral white enamel dial with blued steel spade hands, and 8 day fusee movement with lever escapement, the steel pallets integral with the lever, and dead beat escape wheel at 90 degrees to the escapement platform, and in line with the lever

\$1500-\$1700

Circa 1900 3in x 4.25in



805

LeRoy & Fils, Paris, a miniature Caryatides style carriage clock, the silvered case with caryatid corners, masks and detailed foliate ornament, case top with addorsed serpent handle, and beveled glass allowing observation of the oscillating balance, arabic numeral white enamel dial with plum colored steel hands, and 8 day timepiece movement with lever platform, the case bottom signed "LeRoy et Fils 13 - 15 Palais Royal Paris"

\$900-\$1300

Circa 1880 3.375in x 1.75in x 1.5in



806

806

England, an interesting mid 19th century carriage clock, the cast, gilt case with foliate engraving and decorative tapered feet, the top with fixed handle and round, glazed aperture with concentric regulator, roman numeral white enamel dial with blued steel Breguet style hands, and 8 day timepiece movement with going barrel and lever platform with polished steel balance

\$700-\$900

Circa 1850 5.5in x 3.25in x 2.5in

803

England, a mid 19th century carriage clock, the case with cavetto molded base on decorative feet, the glazed sides with cupids bow bordered, glazed apertures, and cavetto molded top with finials, folding handle, and bevelled glass panel, roman numeral gilded dial with gilt mask and engraved, rose window pattern center, and 8 day fusee movement with large lever platform and polished steel balance

\$1000-\$1500

Circa 1855 6.875in x 4.5in x 3.25in



804

Richard & Co., London and Paris, an unusual and decorative hour repeating carriage clock, gilt Anglaise Riche variant case with break arch top and scroll ornamented carrying handle, arabic numeral white enamel dial with gilt and engraved fretted mask featuring trailing vines and foliage, dragons, and basket of fruit, blued steel hands, and signed, 8 day, two train movement with lever platform, striking on a gong and repeating the last hour on demand

\$1000-\$1500

Circa 1900 6.625in x 4.125in x 3.75in



805



807

Raingo Freres, Paris, a rare amboyna and gilt bronze orrery clock with music box, the rotunda form case with gilt leaf and dart molded rings at top and bottom, the columns with finely ornamented gilt bronze bases and capitals, supporting the entablature, the top mounted with bas relief ormolu signs of the zodiac and a silvered calendar ring, gilt, signed, roman numeral engine turned dial with finely detailed cast bezel, blued steel Breguet style hands and concentric double pointer indicating the day and deities, 8 day two train movement with compensated gridiron pendulum and striking the hours and half hour on a bell, and controlling the rate of rotation of the orrery, demonstrating the motion of the earth and moon around the sun, the four year orrery movement with its own power source and rectangular plates, and with horizontal, dead silvered dials at each end, one indicating the common and leap years, the other showing the age of the moon, with optional manual drive through a handle at the right side of the clock, all resting on a square plinth containing the musical mechanism with pinned cylinder, playing at noon and midnight or on demand, the front with brass plate engraved "Fecit Raingo a Paris", and with three toggles for controlling silence, manual play, and tune change, the clock beneath a protective glass dome

Condition: in an old finish, base containing musical movement with a few splits and minor veneer losses, rotunda base with splits and minor veneer losses, gilding on bronze components good, disc between clock case and plinth an old replacement, dial with good quality restoration to figures, hands good, pendulum gridiron rods with some oxidation and staining, clock movement good, ticks and strikes, orrery complete and functional, double 12 hour ring above earth replaced, moon sphere lacking blue, horizontal dials correctly resilvered, music box complete, dirty, barrel with one broken tooth, will run with pressure on train, original dome good. This clock was formerly owned by Major Paul M. Chamberlain and illustrated in his 1941 book, "It's About Time", and donated to the American Clock and Watch Museum in Bristol, Conn. following his death.

\$100000-\$150000

Circa 1830 30.5in x 15in x 15.125in





808

Feuchere & Fossey, Paris, a good marble, gilt, and patinated bronze "Pendule à l'enfant", the square gilt base supporting a cylindrical, siena marble plinth, the base with laurel wreath, and top with gilt platform surmounted by a patinated figure of a child on his right knee, his upraised hands cradling the gilt, cylindrical clock case, with roman numeral white enamel dial and blued steel Breguet style hands, and signed "Feuchere & Fossey Fab. de Bronzes", and "Hedoiun Hr" below 6:00, 8 day, two train pendule de Paris movement striking the hours and half hour on a bell, originally with silk thread suspension, now with added wheel and late 19th century lever platform

Condition: gilding restored, patination with minor wear, top of base with marks and scratches, marble with a few tiny flakes, the bezel, originally secured with bayonet fittings now with holes plugged, and hinged, rear bezel also with vestiges of its original fixing scheme, dial with chips around winding holes and minor loss at edge below 6:00, hands good, movement ticks and strikes, originally with silk thread suspension, the time train now with one added intermediate wheel engaging with a lever platform escapement. While many of the known pendule à l'enfant clocks of this pattern are attributed to the workshop of the celebrated Pierre Philippe Thomire, Feuchere & Fossey are also recognized as being among the best Parisian bronziers of the early 19th century, and that is clearly evident in the execution of this piece. The manufacture of a particular bronze was not necessarily exclusive to a single shop, and so it is not a surprise to see that other skilled makers were also capitalizing on the appeal of this figure.

\$12000-\$16000

Circa 1825 20.5in x 7in x 7in



809

France, a large and impressive mid 19th figural clock with annular dial, at the right a mottled marble plinth surmounted by a cobalt blue porcelain sphere decorated with small gold stars, at its equator a silvered roman numeral chapter ring marked with hours and minutes, at the left, a bisque, seated female figure in ancient Grecian dress, her left hand held above the sphere, and the right holding a pair of gilt brass dividers, the point indicating the time on the silvered ring, 8 - 15 day brass timepiece movement with silk suspension and Brocot escapement, all on a rectangular Portoro marble base

Condition: Portoro base with chips and flakes, plinth supporting the sphere with tiny edge flakes, sphere good, lower half with some repainted stars, dial resilvered, figure dirty, with minor, well repaired breaks, dividers with minor bends, hinge at bottom of rear door with repair, movement ticks, crutch with bends

\$7000-\$10000

Circa 1850 27in x 23.5in x 15in



810

Lebaury a Paris, a good French Empire gilt and patinated bronze figural mantel clock, the stepped, patinated base on anthemion ornamented paw feet, surbase with gilt heart and flower decorated molding and mounted with three interlocking wreaths and flanking swords, surmounted by a patinated, winged male figure, studying a gilt scroll atop the architectural clock enclosure, the base and cornice with foliate ornamented moldings, and the front with torches and suspended festoon, signed, gilt Roman numeral dial with blued steel Breguet style hands, 8 day, two train pendule de Paris movement with silk thread suspension, striking the hours and half hour on a bell, the back plate signed "Hemon a Paris"

Condition: very good overall, gilding and patination very good, surface on which the figure stands with a few discolored spots, dial figures and minute chapter restored, hands with tiny specks of oxide, movement ticks and strikes, pendulum an incorrect replacement

\$4000-\$6000

Circa 1820 24.5in x 18in x 9in



811

France, a swinging mystery clock featuring a patinated spelter sculpture of young couple seated on a swing suspended from two trees with climbing vines, spherical blue painted clock case with applied Roman numerals and gilt Louis XV hands and 8 day, time only movement, all mounted to a pink variegated marble base on naturalistic, patinated feet, and with engraved plaque marked "Idylle Printaniere Par Geo Maxim", sculpture also signed "Geo. Maxim" on right side of base

Condition: minor losses to patination, left rear foot repaired, male figure with tight split below his left knee, back of sphere replaced and with a few dents, movement ticking, will require adjustment

\$3000-\$5000

Circa 1900 33.75in x 14.5in x 11.25in



812

Attributed to Irving & Casson, Boston, a monumental Gothic hanging regulator with high quality movement by the Waltham Clock Co., the base of the mahogany case with winged mask and large, carved foliate drops below a horizontal field with flanking foliate carved square medallions, the glazed, arched door with cinquefoil - ornamented tracery, carved, foliate cusps, and stylized trefoil spandrels between clustered columns on octagonal bases with carved foliate capitals supporting a molded, ogee arch, the frieze with six vertical ogee arch niches, each with foliate carving at the base, and top with carved, foliate cornice, surmounted by stylized, crenellated parapet inspired crest, with alternating cusp and foliate ornaments, and central, gable - cross finial with foliate carving, roman numeral white painted dial with blued steel spade hands, substantial weight driven timepiece movement with Graham dead beat escapement and decorated plates, with three jar mercury pendulum and brass clad weight, serial #952

Condition: case in original finish and very good overall, minor finish deterioration at lower right side, crest with a few short grain breaks and an old repair at right corner, carved mask with minor bumps and dings, dial with some restoration, minor losses to paint at mounting screws and minor rubs from cleaning, hands good, movement with minor tarnish and staining, running, nickel plating on pendulum a bit dull, beat scale with minor marring, weight with minor dents, tarnish and staining. Provenance: Collection of Steve Mitchell founder of watchpartsrus.com.

\$40000-\$60000

Circa 1895 104in x 30.75in x 11in



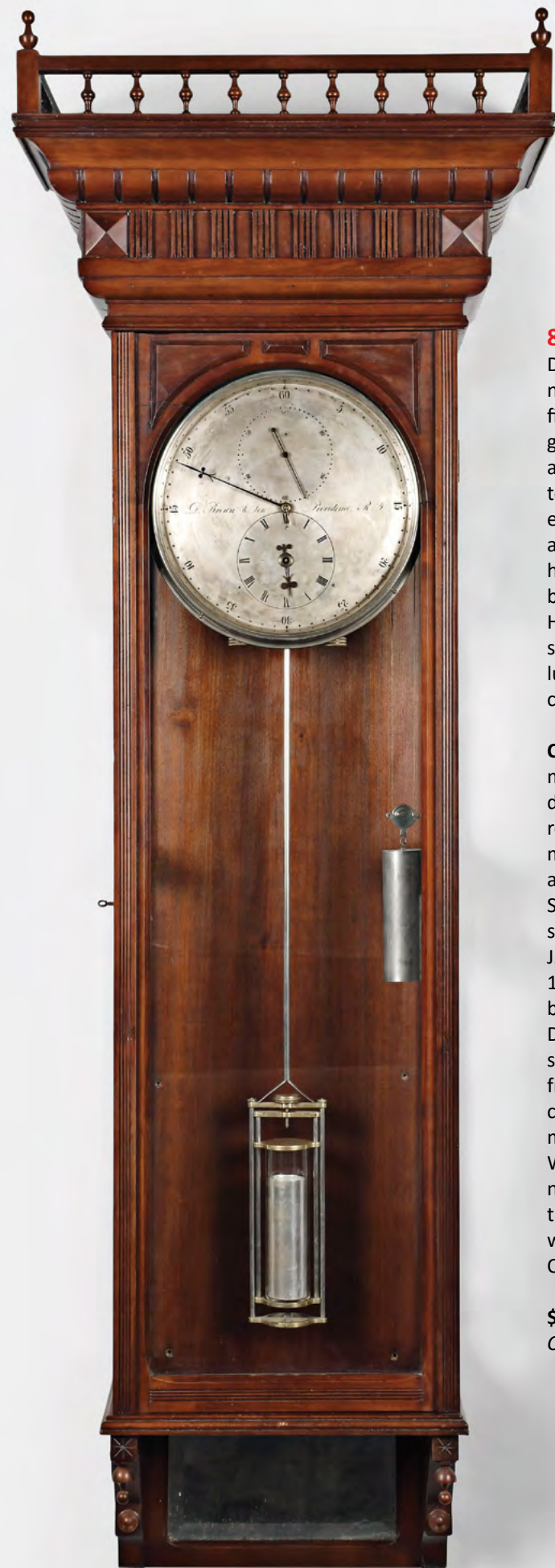
813

Seth Thomas Clock Co., Thomaston, Conn., "Regulator No. 10" hanging jewelers regulator, the walnut case with burl walnut veneer and back panel framed with ebonized moldings, turned full columns flanking the glazed, burl veneered door, crenellated top and base, the treatment also repeated beneath the roman numeral engraved silvered brass dial with blued steel spade hands and sweep seconds, 8 day, time only movement with jewelled pallets driven by a nickel plated brass weight and compensated mercury pendulum with glass jar, silvered and engraved beat scale, dated October 11th, 1881, serial #55

Condition: retains original finish; the original dial retains it's original silvered surface in excellent condition, original pendulum, jar, hands, nickel plated weight, nickel plated winding crank and beat scale. This clock was originally sold on commission to a jewelry store in Astoria, Oregon. This is an outstanding example of a rare model in excellent original condition. We sold this specific clock in November of 2008 for \$62,000 plus 10% buyer's premium.

\$35000-\$45000

72in x 20.5in x 9.25in



814

D. Brown & Son, Providence, R.I., an unusual hanging astronomical regulator with crutchless escapement, the cherry, five light case with decorative bottom brackets and bevelled glass mirror, the door with reeded stiles and arch top with applied, conforming chamfered ornament, heavy, stepped top with bold moldings and simple carving, and surmounted by a simple balustrade with finials, signed, silvered astronomical dial with nickel plated bezel and blued steel hands, 8 day, crutchless timepiece movement with shaped brass plates, jewelled, removable Graham deadbeat pallets, Harrisons maintaining power, and mercury pendulum with steel rod and glass jar, the escapement joined to the pendulum with fine, coiled springs, and driven by a nickel plated cylindrical weight

Condition: case a well made, late 19th century replacement, case very good overall, with a few minor bumps and dings, arch components at top of door with splits, bezel replaced, dial with minor tarnish, hands with minor oxide, movement with some staining, will tick, weight with dent at top, minor dings and plating loss, pendulum. D. Brown & Son was partnership between David Brown, and his son Joseph, who later partnered with Lucian Sharpe, and founded J.R. Brown & Sharpe, manufacturers of precision tools, in 1853. The Brown's partnership as clock and watch makers began in 1833, located at 60 South Main St., Providence. David left the firm ca.1842, following Dorrs Rebellion, and so it would appear that the clock movement and dial date from the second quarter of the 19th century. The case that currently contains the movement was made for the movement and dial during the last quarter of the 19th century. We have not located any information indicating whether or not this experimental method of linking the escapement to the pendulum by substitution of coiled springs for a crutch was patented, or used in any other timepieces. Provenance: Collection of Steve Mitchell founder of watchpartsrus.com.

\$20000-\$30000

Circa 19th c 74in x 24.75in x 12.5in



815

Seth Thomas Clock Co., Thomaston, Conn., "Regulator No. 19" hanging jeweler's regulator in an oak case with burl walnut center panel on quarter sawn oak backboard, two finials and three drops, 12 inch roman numeral painted metal dial with sweep seconds, 8 day, time only movement with maintaining power and driven by a brass weight, and mercury pendulum with two transparent, thumb print jars, Seth Thomas date stamp May 1895 on rear of backboard

Condition: old and possibly original finish nicely rubbed down with minor nicks and scrapes, upper element on the crest and three finials are replacements, minor veneer cracking in base and in one panel on crest, two small splits above door; excellent original dial; original thumb print vials and weight; clean mercury included; a very good example of this scarce model

\$15000-\$20000

Circa 1895 75in`x 23in x 9.75in



816

E. Howard & Co., Boston, Mass., "No. 7 Regulator" hanging figure eight style clock, walnut case with reverse painted and gold leaf throat and lower tablets, painted 12 inch metal dial signed "E. HOWARD & CO. BOSTON" with blued steel diamond hands, 8 day, time only weight driven movement with damascened pendulum bob and gold leafed pendulum rod

Condition: the case has an old refinished surface and the weight baffle is repainted and the molding around front of lower part of door with minor repair; the glasses are original and retain their original paint; the dial is original and retains its original paint with very minor losses; the movement is stamped E. HOWARD & CO. BOSTON; the pendulum bob, weight stamped "7" and pendulum rod are all original. The movement is also die stamped H Mowatt. Mowatt was a Howard employee who may have set up the clock. We have also seen his name scrawled on a No. 57 movement as a service mark. This is an excellent example of a rare E. Howard & Co. model.

\$15000-\$25000

Circa 1880 50in x 17in x 5.5in



817

E. Howard & Co., Boston, Mass., "No. 8 Regulator", figure eight style hanging clock in a walnut case with reverse painted and gold leaf tablets, roman numeral 12 inch painted metal dial with blued steel diamond hands, 8 day, time only, weight driven movement signed "E. HOWARD & CO. BOSTON" with damascened pendulum bob and gold leafed pendulum rod

Condition: the case retains its original finish with a professional repair to lower case from weight dropping; the original dial retains its original paint with a minor touchup near center arbor, signature worn but legible; great original label and original tablets; pendulum, weight stamped "8" and hands are original. This is another great original example of a very scarce model Howard.

\$8000-\$12000

Circa 1880 45in x 15in x 6in



818

E. Howard & Co., Boston, Mass., "No. 85 Regulator" hanging clock in a quarter sawn oak case, with carved panel below the dial and carved corners on upper door, roman numeral 14 inch painted metal dial with blued steel spade hands, 8 day, time only, weight driven movement with seconds pendulum and damascened, nickel plated pendulum bob with silvered wooden rod

Condition: old finish on case with minor nicks, scrapes and chipping, minor veneer repair on lower right side edge; original dial with original paint, fading to signature and minor losses around winding and center arbors and seconds bit; movement signed E. Howard, original weight and pendulum; this is an excellent example of a rare model, the first that we have sold in over twenty years

\$12000-\$16000

Circa 1889 60in x 19.25in x 7.5in



819

Simon Willard & Son, Roxbury, a good stencil front patent timepiece or banjo clock, the mahogany, cherry and pine case with ebonized, convex frames decorated with bronze stenciled foliate ornament, the frames containing reverse painted glasses with gilt ornament surrounding and superimposed on the white bordered, green, yellow, and red background, the throat marked "Patent", case bottom with acanthus stencilled bracket and gilt acorn drop, the head with cast brass bezel and turned, gilt finial, signed roman numeral white painted sheet iron dial with blued steel barbed hands, 8 day, weight driven timepiece movement with alternate train, diagonal through bolt mounting, and pendulum with brass clad bob; includes paperwork and two reference books, "The Book of American Clocks" by Brooks Palmer and "Willard's Patent Time Pieces" by Paul J. Foley

Condition: case retains its original finish, stenciling partially obscured by an alligatored, darkened varnish, bottom reattached to box, the sides now with minor splits, losses, and exposed nails, right side of bracket with small dent, glasses with minor losses and touch ups to original paint, throat frame with repair to extension at bottom, side pieces appear to have some age, but lack a fine finish, finial with split and replaced mounting pin, dial with craquelure and losses to numerals and signature, signature losses poorly restored, exposure to UV light confirms signature, and reveals evidence of a number below the makers signature, hands have age but lack a fine finish, movement oily and with green residue, will tick, weight and pendulum good. See Paul Foley's "Willard's Patent Timepieces" pages 137 - 38 for a nearly identical clock by this maker.

\$20000-\$25000

Circa 1825 40.5in x 10.5in x 4in



820

E. Howard & Co., Boston, Mass. a rare "No. 70 Regulator" hanging clock with 24 hour dial also know as the "Kosmic" in a walnut case with reverse painted lower tablet, painted metal dial adapted to show 24 hours with apertures revealing four sided, painted wooden blocks rotating every twelve hours revealing roman numerals 1 through 12 and then arabic numerals 13 through 24, 8 day, weight driven, time only brass movement

Condition: refinished case; movement clean with original 24 hour blocks; repainted lower tablet; dial appears to retain it's original paint; this is a hard to find clock as Howard was anticipating a transition to 24 hour timekeeping by the railroads that never took place and production was never scaled up; an excellent example of a very rare timepiece

\$10000-\$15000

Circa 1886 30.5in x 15.5in x 6in



821

Seth Thomas Clock Co., Thomaston, Conn., "Regulator No. 6 Double Time" in a mahogany case, the two roman numeral painted metal dials with nickel plated bezels, blued steel spade hands for two time zones and white enamel plaques reading "RAILROAD TIME" and "LOCAL TIME", 8 day, time only movement driven by a nickel plated brass weight, with damascened nickel plated pendulum bob

Condition: case retains it's original finish with minor nicks, scratches and scrapes, minor splits in door at top and bottom, minor veneer cracking on the side of bottom bracket, original finials with one lower finial missing tip; repainted dials with small chip on surrounding wooden upper dial mask; original hands, time zone plaques, weight and pendulum bob that has some loss to nickel finish. This clock is similar to the one pictured in Tran Duy Ly's 3rd Edition on Seth Thomas Clocks, page 284, attributed to the Wasserman collection, which when sold at our October 2011 auction brought \$34,000 plus 15% Buyer's Premium. This model is the best and the most original example we have offered since Wasserman's.

\$10000-\$15000

Circa 1881 47.5in x 16.75in x 7.25in



822

Waltham Clock Co., Waltham, Mass., "Curtis Girandole" hanging clock in gold leafed mahogany case, reverse painted convex throat tablet with Taylor thermometer and reverse painted convex lower tablet depicting and Aurora mounted on chariot, painted iron dial with Waltham signature, 8 day, time only, weight driven brass movement, serial #21

Condition: original gold leaf on case, except on bottom door that has been repainted gold, minor flaking to gesso on bottom element of case; throat tablet repainted; lower tablet replaced with broken original tablet set behind the new tablet; original dial with some flaking; original hands; original thermometer; original weight and pendulum

\$10000-\$15000

Circa 1925 48.5in x 15in x 5in



823

Seth Thomas Clock Co., Thomaston, Conn., "Office Calendar No. 5", the hanging double dial calendar clock in a walnut case with carved, scalloped top, angled bottom with pendulum aperture and Gothic style fretwork trim, painted metal time and calendar dials, the upper signed "SETH THOMAS" and the lower with patent date, blued steel spade hands, 8 day, time and perpetual calendar, weight driven movement with maintaining power and stamped with Seth Thomas logo

Condition: professionally refinished case in very good condition with good clockmaker's labels inside; the dials retain their original paint and have been partially cleaned, with minor losses; the original roller papers on calendar mechanism have darkened; weight, pendulum bob, and hands are original. This is a nice example.

\$7000-\$9000

Circa 1884 49in x 24in x 8in



824

Welch, Spring & Co., Forestville, Conn., "Regulator No. 7" also know as the "Hanging Patti", walnut case with a profusion of turned ornament and flocked paper interior, roman numeral papered metal dial with blued steel Maltese hands, 8 day, time only sweep seconds movement driven by a brass weight, gold leaf pendulum rod and signed cast brass beat scale

Condition: the case retains an excellent original finish and original turned finials, two of which have chipped, no case elements absent, door with original glass, flocking in excellent condition; the dial with original papered surface and minor touchup to numerals; pendulum, weight, beat scale and hands are original. This is an excellent example of rare early Welch model.

\$6000-\$8000

Circa 1875 48in x 17.5in x 8in



825

Welch, Spring & Co., Forestville, Conn., "Regulator No. 8" hanging clock in a black walnut case with burl highlights and black flocking on backboard, roman numeral white enamel two part dial with sweep seconds, and 8 day, time only movement driven by two brass weights, with gold leafed pendulum rod and signed beat scale

Condition: case retains its original finish and flocking in very good condition with minor nicks and scrapes, minor damage near door lock, minor repair to two finials; dial with several faint hairlines; original pendulum rod professionally repaired and its gold leaf in good condition; original beat scale in excellent condition; brass weights are both Welch but of different sizes. An excellent example of this rare model.

\$6000-\$8000

Circa 1885 65in x 19in x 8in



826

Boston Clock Co., Boston, Mass., rare model hanging regulator in a cherry case with turned finials, carved crest and reverse painted and gold leafed lower tablet, large 14 inch painted metal dial signed "BOSTON CLOCK CO." with blued steel moon hands, 8 day, time only, weight driven movement also signed BOSTON CLOCK CO. with damascened pendulum bob

Condition: the case retains its original finish in excellent condition; the reverse painted tablet retains its original paint; the dial retains its original paint in excellent condition with very minor losses; hands, pendulum, and weight are original. This specific clock is one of very few known of this model, and was sold in the Lindy Larson collection at Cottone Auctions in 2007 for \$14,500 plus buyer's premium.

\$5000-\$7000

Circa 1885 37in x 17in x 5in



827

Boston Clock Co., Boston, Mass., rare model hanging clock in an elongated rectangular cherry case with balustrade at top and cherry weight baffle, unsigned roman numeral 7in painted metal dial with blued steel moon hands, 8 day, time only, weight driven movement signed BOSTON CLOCK CO. BOSTON with damascened pendulum bob and gilded pendulum rod

Condition: the case retains is original finish with minor nicks and scrapes; the dial retains its original paint with minor touch-up near 12 and minor flaking, weight, pendulum rod and pendulum bob are original

\$4000-\$6000

Circa 1885 37in x 11.25in x 5in



828

Reproduction of an E. Howard & Co., Boston, Mass., "No. 49 Regulator" hanging astronomical regulator in a carved mahogany case with painted metal dial, 8 day, time only, weight driven movement regulated by a three jar mercury pendulum

Condition: case in good condition with one carved leaf on bottom bracket absent; dial in good condition; nicely made case makes for impressive presentation

\$4000-\$6000

Circa late 20th century 90in x 31in x 9.25in



829

Seth Thomas Clock Co., Thomaston, Conn., "Regulator No. 31" hanging jeweler's regulator in an oak case, roman numeral 18 inch painted metal dial with blued steel spade hands, and 8 day, time only movement driven by a brass weight with seconds pendulum

Condition: case retains original finish with minor chips along outer edge of door; original dial with touch ups; original pendulum, beat scale and weight; this is an excellent example of a rare model, the first that we have sold in over twenty years

\$2500-\$3500

Circa 1909 68in x 19.25in x 7.5in



830

New Haven Clock Co., New Haven, Conn., "Regulator No. 10" hanging jeweler's regulator in an oak case with carved top and two turned drops, roman numeral painted metal dial with blue steel spade hands and sweep seconds, 8 day, time only movement driven by a brass weight

Condition: case retains original finish with minor nicks and scrapes, dial mask a replacement; dial repainted; original hands, weight and pendulum

\$2000-\$3000

Circa 1895 77.5in x 24in x 11.5in



831

E. Taber, Roxbury, Mass., a good early 19th century Roxbury style tall clock, the mahogany case on ogee bracket feet, the base with stringing, inlaid quarter fans, and central, oval paterae of contrasting woods, the trunk with stop fluted quarter columns flanking the molded, break arch door with conforming stringing, and bonnet with stop fluted columns, string inlaid door with set up instruction label on inside, and the top with pierced fret and three fluted plinths with brass ball and spire finials, roman numeral painted dial with floral spandrels, and scene in the arch featuring a castle and bridge, a sailboat and a fisherman on the shoreline, 8 day time and strike movement, brass clad pendulum with ebonized wooden rod, and tin can weights

Condition: case refinished and with veneer and inlay repairs to base, a few lower segments of paterae a bit loose and with lifting finish, rear feet replaced and with added bracing, case bottom replaced, fret replaced, trunk door with minor warp and small molding chip at upper right, finials with fine abrasion from cleaning, dial with restoration and minor lifting of paint, movement plates with minor staining, ticks and strikes, pendulum good, period tin can weights

\$8000-\$12000

Circa 1800 93in x 20.25in x 10.25in



832

George Jones, New York, a good walnut standing astronomical regulator, the base with two, arch-top, molded, burl walnut panels with incised, raised ornamental ash burl fields, the trunk with glazed, arched molded door with ash burl spandrels, the trunk with canted corners, ash burl panels, ornamental split turnings, and ash burl frieze with central, composition medallion, the bonnet with break arch ogee molding below incised ash burl panels with flanking leaf and scroll carved ornaments, heavy cast bezel with incised ash burl spandrels and carved, heart shaped drops, surmounted by a horizontal ogee molding with broken arch and central turned and carved finial, 18 inch silvered dial with black steel hands, and substantial, weight driven timepiece movement with Graham deadbeat escapement, the three jar mercury pendulum contained in an ornamental, nickel plated frame with intricate etching, and marked "George Jones & Co. 6 Courtlandt St. N.Y.", and brass clad weight

Condition: in an old finish, base moldings with wear, bumps and dings, finish loss and bloom, finish on lower trunk transition molding with rubs and losses, trunk with minor splits, spandrels with minor losses, minor losses to veneers, finial with losses at base, glue runs and pooling above break arch molding, dial with minor staining, hands with losses to finish, movement ticking, pendulum good, glass jars with some staining, weight with minor dings and dents

\$8000-\$12000

Circa 1880 111in x 28in x 12.25in



833

E. Howard & Co., Boston, Mass., chiming hall clock in an elaborately carved quarter sawn oak case with Gothic elements and glazed trunk door, resting on carved feet, silvered brass dial with applied brass roman numerals, 8 day, three train movement regulated by mercury pendulum and driven by three brass weights, chiming on four round gongs and striking hours on a fifth gong with tune selector for Cambridge / Westminster / Silent operation on right side of movement inside case

Condition: large and impressive Howard model not found in catalogs, may have been custom order; little finish remains on case with minor nicks and scrapes, minor split on right side beneath hood, thin 2in sliver of right return molding beneath hood absent; dial with minor tarnishing; original Howard mercury pendulum

\$5000-\$7000

Circa 1900 100in x 28in x 15in



834

Louis C. Fellows & Schell, New York, a good mid 19th century standing astronomical regulator, the mahogany veneered case on bracket feet below a base with shouldered, figured mahogany lancet arch panels and veneered ogee molding transitioning to the trunk with a glazed, shouldered lancet arch door with flanking, canted corners with lamb's tongue stops, and lancet arch bonnet with conforming top molding, pinnacle finials, square plinth, the inside marked "Louis C. Fellows & Schell 21 Maiden Lane New York", round, silvered brass bezel, 16 inch roman numeral silvered astronomical dial with blued steel hands, and marked "Regulator", substantial English 8 day weight driven timepiece movement with jewelled, Graham dead beat escapement, train with jewelled endpieces, and three jar mercury pendulum with contained in an ornamental, Jones style, nickel plated frame with intricate etching, and marked "C.E. Butler", the beat scale with complimentary decoration

Condition: in an old finish, dirty, with crazing and minor losses, feet with veneer losses, left side of case with white paint spatter/ stain, base with center split, other areas also with minor splits, minor losses to cock beading above left lambs tongue, bonnet top with splits, molded edge of bonnet top with minor losses, top of center pinnacle with minor chips, lower bonnet molding with chip at front left corner, dial with darkening and spotty discoloration, hands lacking blue, movement with minor staining, steel components with minor oxidation and pitting, back cock shimmed, weight with minor denting at top, pendulum with minor oxidation, and lacking pointer at bottom, jars with staining, one jar with repaired breaks. Louis C. Fellows & Schell were importers and retailers of watches and jewelry, their occupation of the 21 Maiden Lane address beginning in 1848.

\$5000-\$7000

Circa mid 19th c 107.5in x 22.75in x 12.25in



835

Herschede Hall Clock Co., Cincinnati, Ohio, "Pattern No. 83" chiming hall clock in a elaborately carved mahogany case with four Gothic spires surmounting hood, gothic framing on side lights and trunk door, other carved gothic embellishments, rear of case with stamped Herschede logo and "83", composite brass dial with silvered chapter ring with applied brass arabic numerals, silvered Westminster / Whittington tune selector and chime / silent selector, moon phase display and cast brass spandrels, 8 day, three train movement driven by three brass weights and chiming on nine tubular bells

Condition: original finish rubbed down, one spire has projection absent, scuffing on left corner of base, right return molding beneath hood split; dial is in very good condition with light tarnishing in arch; seven of nine unsigned tubes are split

\$4000-\$6000

Circa 1904 100in x 26in x 16.5in



836

Joseph Hubner, in Wien, a long duration, three train standing regulator, 6 light mahogany veneered case with boxwood stringing, the top with ogee molded pitched pediment, bonnet retained with sliding dovetail keys, the trunk with removable frame, and the base with figured, matched veneers, signed roman numeral white enamel dial with nicely finished steel hands, three train movement of six week duration and striking Viennese quarters, bimetallic gridiron pendulum with brass clad bob and knife edge suspension, five spoke brass pulleys with scroll frames, and cylindrical brass weights

Condition: case with minor dings and scratches, a few losses to veneer and inlay on base and elsewhere, right side of base with tight split, dial with repaired flakes at winding holes and a few minor scratches, movement ticks and strikes, crutch with bends, weights and pendulum with stains from handling, weights with a few minor dents, pendulum with repair at slot for crutch pin, also with a filled crutch pin slot. A high quality 20th century reproduction case, with period mechanical components

\$4000-\$6000

Circa 20th c 83.5in x 21in x 11.5in



837

Plato & Co., Berlin, an early 20th century tall clock with Symphonion 13 5/8 inch disc music box and Lenzkirch movement, the oak case on a molded bracket base with storage compartment, the door with applied turned ornaments and central fretted ornament with molded frame, the trunk containing the music box with duplex comb, the door with moldings enclosing a field with fretted ornament and split turning, and flanking pilasters with molded plinths, the top with various moldings and carved ornaments, and architectural clock case with molded base below a door with turned, fluted columns and fretted ornament, the top with projecting cornice, carved leaf and scroll finials, carved crest, and domed, shingled roof surmounted by a molded, domed plinth with turned finial, arabic numeral engraved brass dial with fancy steel hands, and 8 day, two train Lenzkirch movement striking on a gong, and activating the music box at the hour, serial #923889, with ten discs

Condition: base with damage to molding at left corner and left side, left side of base with split, one half of base escutcheon missing, base door panel with split at lower left, base lock missing, split turning on trunk door with minor loss, trunk door escutcheon detached, some moldings reattached to case and with minor dings and chips, bezel with splits, rear door detached from hinges and with poor quality repair, two pieces of molding missing above right column, minor veneer losses to back side of dome, block beneath rear right split column missing, carved finials with minor losses, dial lacking silvering, hands good, movement ticks and strikes, music box plays well, does not stop automatically, discs with a few minor rust spots and edge bends, crank replaced

\$3000-\$4000

Circa 1900 93in x 20 1/2in x 13.25in



838

Waltham Clock Co., Waltham, Mass., large chiming hall clock in an ornately carved mahogany case, break arch top with dentil molding, hood with fretwork sides flanked by four fluted full columns with corinthian capitals and bases, trunk with oval beveled glass door and sides flanked by fluted three quarter columns with corinthian capitals and bases, the paneled base resting on six carved paw feet, the composite brass dial with silvered chapter ring, applied brass arabic numerals, silvered Westminster / Whittington tune selector and strike / silent selector, moon phase display, and cast brass spandrels, 8 day, three train movement driven by three brass weights and chiming on nine tubular bells

Condition: case retains its original finish with minor nicks and scrapes, small split beneath oval side lights on trunk and a small piece absent from lower right return molding above base, fabric behind openings in rear of case deteriorating; dial with minor tarnish; no splits in tubes

\$3000-\$5000

Circa 1905 95in x 27.5in x 19in



839

Attributed to James Cole, Rochester, New Hampshire, an early 19th century tall clock, the arched top soft wood case with mahogany and tiger maple highlights, fretwork top, bird's eye maple panel in trunk door resting on cutout bracket feet, 8 day, time and strike, weight driven movement with painted metal dial with painted spandrels decorated with American shields

Condition: alligatored original finish, fretwork appears original with reinforcements to ears; dial retains original paint in good condition; seat board original; clean movement; very nice example

\$2000-\$3000

Circa 1815 87.5in x 20in x 10in

840

Japan, a mid 19th century shitan wood striking Shaku Dokei, the rectilinear case with key drawer at base, the front with movable hour and half hour markers, and sides with pierced brass frets, brass movement with verge escapement and turned, vertical balutser pillars, the front plate pierced and with chrysanthemum engraving, the weight containing the striking movement with count wheel, activated by projections at the back of the markers, with red stained box

Condition: case with repaired splits, left side with poorly repaired split, one piece of trim missing at top of fret on right side, bonnet side glasses with cracks, movement running, striking functional but in need of adjustment, as train locks following each strike, box with pegged joints, dirty and with marks, top with split, scratches, and losses to finish

\$3000-\$5000

Circa 1840 21.75in x 2.75in x 1.75in



841

Japan, a mid 19th century engraved Makura Dokei with calendar, the gilt case with ornamental, turned pillars, chrysanthemum engraving, and calendar apertures below the rotating dial with fixed steel hand and movable hour and half hour markers, the 30 hour, two train movement with fusee for the time train, and going barrel for the striking, verge escapement with balance having movable weights, and oscillating beneath the top mounted bell, with later hardwood case, clock dimensions listed

Condition: case very dirty and with some losses to gilding, wooden base with losses to edge of bottom board, drawer replaced, movement very dirty, running and striking, outer case of 20th century manufacture

\$2000-\$3000

Circa mid 19th c 4.75in x 3.625in x 2in



842

Japan, an interesting Wadokei or pillar clock with lacquer dial, the simple hardwood case of typical pillar form, the time indicated on a black lacquer dial, the sliding pointer with chrysanthemum engraving, weight driven thirty hour movement with shaped and engraved front plate representing a potted chrysanthemum, and verge escapement with large, horizontal balance with adjustable weights

\$800-\$1200
 Circa 19th c 15.5in x 2.5in x 2.25in



843

Japan, a small late 19th century Wadokei or pillar clock, ebonized case with ebony back board and roman numeral dial, weight driven 30 hour movement with shaped, chrysanthemum engraved front plate flanked by decorative, turned pillars, and large horizontal balance with scalloped rim

\$700-\$900
 Circa late 19th c 10.875in x 1.875in x 2in



844

Japan, a 19th century iron lantern clock or Yagura Dokei, with wooden stand, weight driven iron posted frame movement with verge and foliot escapement, and iron wheels and pinions, rotating Warikoma dial with movable chapters and fixed hand, and striking on a bell, resting on a 20th century, pyramid shaped wooden stand

\$600-\$900
 Circa 19th c 39in x 15in x 15in



845

An unusual carved Asian clock with French movement, the hard-wood case with rectangular base having canted corners, carved moldings and ornaments, the top of the base with carved balustrade and supporting a carved, vasiform pedestal with cloud carved cradle holding the cylindrical case with carved foliate frets, roman numeral brass dial with engraved center and fancy, pierced hands, and 8 day French timepiece movement with lever platform

\$400-\$600
 Circa 1900 19.5in x 10.25in x 6.5in

846

France, a large figural swinging mystery clock, on an ebonized turned plinth with plaque marked "La Jeunesse par A. Moreau", supporting a conforming spelter base below patinated foliage and roses, and surmounted by a figure of a young, smiling woman in flowing dress, one hand joined with the left hand of a figure of cupid at her feet, her right hand held aloft, and supporting the swinging compound pendulum, the 8 day timepiece contained in the patinated, upper sphere, with Gothic roman numerals, Louis XV style hands, above the three rod, gridiron style pendulum with patinated bob

Condition: figure with restoration to finishes and minor abrasions, support rod for swinging clock replaced and lacking pendulum retaining screw, finishes on spheres also with restoration, steel pendulum rods with oxidation, pendulum bob with alteration at top, portion of threaded pendulum rod replaced, movement pendulum bob replaced, ticking, will need service and adjustment

\$4000-\$6000

Circa 1900 39in



847

Andre Romain Guilmet, Paris, a bronze and gray marble mystery clock, the case with stepped molded base and paw feet with scroll and honeysuckle returns, the sides with decorative lion mask handles, surmounted by a gilt bronze figural group representing Venus chastising Cupid, her left hand held aloft, and suspending the pendulum with thick, brass rimmed glass bob, impulsed through the nearly imperceptible movement of the bronze base on which they stand, roman numeral white enamel dial with blued steel Breguet style hands, 8 day, two train time and strike movement with crank and stirrup escapement, back plate with Guilmet's mark and numbered 1317

Condition: marble with very minor roughness at base, front right corner, bronze components with minor losses to gilding, figures with losses to gilding and lacquered surface, dial with hair-line and glued chip at edge, 3:00, movement a bit dirty, escapement functioning, striking, will require adjustment, gilding on pendulum with wear

\$2500-\$3500

Circa 1880 22.5in x 10.75in x 9in





848

France, a large figural mantel or table clock with conical pendulum, the alabaster case with hoof feet and scroll returns supporting the canted base below a cylindrical case with projecting sides and front, with conforming, molded top, the case with simple gilt moldings outlining its shape, and surmounted by a bronzed spelter figure of a young woman with amphora cradled in her right hand, the left held aloft and supporting the conical pendulum with polished brass spherical bob, roman numeral gilt dial with engine turned center and gilt spade hands, 8 day two train movement striking the hours and half hour on a bell

\$2000-\$3000

Circa 1870 34.75in x 18in x 10.5in



849

Andre Romain Guilmet, Paris, a late 19th century swinging mystery clock with crank and stirrup escapement, the black slate case on gilt paw feet with honeysuckle returns and central scroll and honeysuckle drop, the sides with gilt, ornamental handles, and molded top, surmounted by a patinated female figure, her right hand held aloft, and suspending the pendulum with decorative bob having a thick, bevelled glass insert, impulsed through the nearly imperceptible movement of the base on which she stands, roman numeral black slate dial with gilt hands, 8 day time and strike movement with crank and stirrup escapement, the back plate with Guilmet's mark and numbered 3852

\$1300-\$1700

Circa 1885 26.25in x 14.75in x 9in



850

Andre Romain Guilmet, Paris, a late 19th century well form mantel clock with conical pendulum, the case with gilt and silvered open frame with cobalt blue glazed and gilt, faux masonry base, a well wheel at the top, just below the point at which the repousse pail pendulum is suspended, the front panel with molded cartouches bearing gilt, Gothic roman numerals, and 8 day, two train movement striking the hours and half hour on a bell, and with Guilmet's mark on the back plate

\$1000-\$1500

Circa 1890 16.5in x 6.25in x 5.25in

851

Paris, France, for Charles Frodsham, a turn of the 20th century floating turtle mystery clock, the the rosewood and rosewood veneer case with molded base on brass feet, the sides with recessed, molded panels and book matched veneers, with molded top supporting a water filled pewter bowl, the rim with engraved roman numerals, the floating turtle indicating the time, driven by a magnetic ring attached to the timepiece movement with lever platform concealed in the base, an engraved plaque on the case front marked "Made in Paris for Chas. Frodsham & Co., 115 New Bond St, London 20220"

\$1200-\$1500

Circa 1900 5.875in x 9.5in x 9.5in





852

England, a mid 19th century skeleton timepiece with horizontal balance, the S and C scroll fretted frames on brass ball feet, all wheels with well executed six spoke crossings, including the great wheel and maintaining power ratchet, Graham deadbeat escapement with long lever engaging with the balance roller, and providing impulse to the oscillator, roman numeral silvered dial with blued steel Breguet style hands, all on a modern wooden base with glass dome, dimensions are of clock only

\$1200-\$1600

Circa 1860 11in x 6.25in x 4in



853

Lenzkirch, Germany, a large, late 19th century mantel clock, the architectural oak breakfront case on turned feet and with heavy, molded base, the front with break arch molding above the roman numeral silvered dial, and cast caryatids flanking a central mask and acanthus leaf ornament, the sides with cast mounts and pierced, scroll brackets, below a molded cornice and domed top with eagle finial, and 8 day, two train round movement striking on a bell, serial #480880

\$800-\$1200

Circa 1880



854

Lenzkirch, Germany, bracket clock in a carved oak with roman numeral silvered brass dial, 8 day, time and strike, spring driven movement, serial #54461, including matching bracket / shelf

\$800-\$1200

Circa 1853 22in x 11in x 7in

855

Lenzkirch, Germany, an early 20th century spring driven regulator, the walnut and walnut veneer case with heavily molded base and three turned drops, the rectangular, divided door adorned with moldings, pilasters, and split baluster turnings supporting an entablature and cornice, surmounted by a domed roof with faux shingled front and three turned urn and obelisk finials, the case mounted with a spectacular array of well cast brass ornament, arabic numeral silvered dial with fancy blued steel hands, 15 day two train movement striking bim bam quarters on two gongs, and counting the hours on the larger gong, fancy cast pendulum bob, and original key

\$4000-\$5000

Circa 1910 48.5in x 16.5in x 8.75in





856

Lenzkirch, Germany, an early 20th century freischwinger, walnut and walnut veneer case with applied brass ornaments, scroll sawn backboard and brackets with applied moldings, below the square mid section with molded cornice, the removable crest with molded, break arch top with three finials and applied, cast peacock, the square door with brass mounted split baluster turnings flanking the arabic numeral silvered dial, with fancy, pierced, blued steel hands, and 15 day, two train movement striking bim bam quarters on two gongs, and counting the hours on the lower gong, the cast pendulum bob with rococo ornament, with putto at center, original key, the backboard with Lenzkirch stamp, serial #1432378

\$1500-\$2000

Circa 1905



857

Lenzkirch, Germany, "Freischwinger", most similar to model 622, in an oak case with barley twist columns on either side of the open well, roman numeral two part white enamel dial, 8 day, time and strike, spring driven model 26 series two movement with stamped Lenzkirch logo and cast brass pendulum with putto, illustrated in "150 Jahre Lenzkircher Uhren", page 136, serial #1037868

\$1000-\$1500

Circa 1884 36.5in



858

Austria, a large, later 19th century grand sonnerie striking Vienna regulator, the walnut and walnut veneer case with S curved bottom bracket with shaped, in-laid burl panel and turned drop, the door with canted corners having burl veneered pilasters terminating in leaf and scroll carved corbels and burl veneered plinths, heavy base and cornice moldings, and top with fixed, arched crest with carved and veneered keystone, the backboard with central, framed burl panel and enamel beat scale, roman numeral white enamel two piece dial with pierced, blued steel hands, 8 day, three train movement with dead beat escapement and striking Viennese quarters, three brass clad weights, and pendulum with ebonized rod and brass bob

\$1500-\$2000

Circa 1880 58.75in x 20.5in x 9.5in



859

M. Herz & Sohn, Wien, a large walnut, three train weight driven regulator, walnut case with molded, carved bottom bracket below carved moldings, carved masks, and turned drops, the door bottom with carved, vasiform ornaments, the top with attenuated, fluted columns, carved capitals and conical drops, arch carved frieze and ogee molded cornice, and carved, broken scroll crest with central, carved angel and turned finial, the backboard with molded, recessed panel with fretted ornament, arabic numeral white enamel chapter ring with signed, engraved brass center, fancy blued steel hands, and 8 day, weight driven, three train movement striking Viennese quarters on two gongs and driven by three engraved, brass clad weights, and engraved brass pendulum with ebonized wooden rod

\$1500-\$2000

Circa 1910 57in x 19.5in x 9.5in



860

Austria, a large and ornate grand sonnerie striking Vienna regulator, the rosewood veneered and grain painted case with ebonized trim, the bottom with molded bracket and fretted Gothic style skirt, the door with slim, ebonized columns on turned, fluted bases and turned capitals supporting a turned, arch molding with flanking, addorsed carved gryphons clutching shields, and deep cavetto cornice molding with Gothic fret, and surmounted by scroll carved ornaments and central leaf, shell, and scroll crest, two piece roman numeral white enamel dial with fancy blued steel hands, 8 day, three train movement with dead beat escapement, sounding Viennese quarters on two gongs, with brass clad weights and brass pendulum with ebonized wooden rod

\$1400-\$1800

Circa 1875 57in x 17.5in x 6.75in



861

L. Petrzyk, in Wien, a mid 19th century grand sonnerie striking regulator, the mahoganized case with S curved bottom bracket with flanking and central turned drops, door with molded, arched aperture and canted, stylized molded pilasters with scroll ends, and undulating, molded cornice with two finials, signed, two piece roman numeral white enamel dial with pierced, blued steel hands, and three train, weight driven movement with Viennese striking, sounding the hour and quarter in passing, and repeating the last hour and quarter on demand, driven by three brass clad weights, and pendulum with ebonized rod and brass bob

\$1000-\$1500

Circa Mid 19th c 48.5in x 15in x 6.5in



862

Uhrenfabrik Gebruder Resch, Austria, a large, weight driven Vienna regulator with grand sonnerie striking, walnut veneered case with typical bottom bracket and turned drops, fluted columns with turned, carved vasiform bases and carved capitals, and top with molded cornice, carved shell, and central plinth with flanking scroll carving and carved top ornament, roman numeral white enamel dial with fancy blued steel hands, and three train movement striking grand sonnerie quarters on two rods, driven by three brass clad weights, and brass pendulum with ebonized wooden rod

\$1000-\$1500

Circa 1900 53.75in x 18.75in x 8.25in



863

Austria, a mid 19th century month going Vienna regulator timepiece, rosewood veneered case with S curve bottom bracket and turned drop, the door with applied, ebonized twist turned columns and rosewood grained corbels at top and bottom, the top with cavetto and ovolo cornice molding below a removable crest, two piece roman numeral white enamel dial with typical Vienna style blued steel hands, 30 day timepiece movement with deadbeat escapement and maintaining power, pendulum with ebonized wooden rod and brass bob, and brass clad weight

\$700-\$900

Circa Mid 19th c



864

Deutsche Magneta, Germany, a seconds beating electric master clock, the rectilinear oak case with ogee molded cornice, glazed door with roman numeral white painted dial, and movement with cast iron back plate and jeweled Hipp toggle, the pendulum with cylindrical, brass clad bob

\$800-\$1200

Circa 1910 55in x 14.5in x 7in



865

Synchronome, London, a seconds beating master clock with slave, oak case with rounded corners, arabic numeral silvered dial with black painted hands, and iron frame movement with black crinkle finish, and pendulum with cylindrical bob, serial #4366, together with a Synchronome slave clock with brass bezel and thick bevelled glass, the roman numeral silvered dial signed "Rattray & Co. Dundee"

\$800-\$1200

Circa 20th c 49.75in x 10.125in x 5.125



866

Tann - Synchronome, England, a mid century modern style seconds beating master clock, the rectilinear, mahogany veneered case with offset dial and black backed glazing with apertures top and bottom revealing the rectangular, arabic numeral white dial, and the nickel plated cylindrical pendulum bob, the A frame movement with black crinkle finish, and all brass components with matte surfaces, and with an advertising sheet from Tann Synchronome listing some of their major milestones, and with an illustration of the clock

\$700-\$1000

Circa 1975 49.5in x 13in x 5.75in



867

Hamilton & Inches, Edinburgh, a monumental mahogany gallery clock, the architectural case with large bottom bracket with carved scroll border enclosing mirrored rinceau carving with central bowl of fruit, the sides with carved consoles on molded bases and supporting an entablature with angled, carved brackets and pitched pediment top, the front with cavetto, ovolo and bead molding enclosing a fielded panel with egg and dart carved bezel below applied, carved floral festoons, the signed, roman numeral white painted dial with blued steel spade and poker hands, and heavy, 8 day, two train fusee movement with dead beat escapement, striking on a gong

\$1800-\$2500

Circa 1900 41.5in x 26in x 6.625in



868

Gallam & Sons, Nottingham, England, tavern wall clock, 8 day, time and strike weight driven movement in a mahogany veneer case with figured mahogany door and painted metal dial

\$1200-\$1500

Circa 1830 58in x 19.5in x 9in



869

R. Schnekenburger, Germany, to the design of Wilhelm Kohler, a rare hanging, striking 400 day clock with torsion pendulum and pivoted detent escapement, the walnut veneered Alt Deutsch style case with incurved bottom bracket and turned drops, the glazed door with slender columns having turned, vasiform tops and bases, and top with ogee cornice molding, and removable crest with central mask ornament with flanking, split turned balusters, and turned finials, all below a shaped top with leaf carving, two piece, roman numeral white enamel dial with fancy, pierced blued steel hands, two train brass movement with pivoted detent escapement and count wheel striking, and heavy spherical pendulum, serial #109

Condition: case refinished and with minor splits, case side components with gaps and minor warp, crest an old replacement, top of crest replaced, lacking two drops, dial with a few minor scratches, hands with bends and spots of oxide, movement dirty and with minor staining, escapement functional, striking sluggish, suspension short, pendulum with a cluster of small dents

\$3500-\$4500

Circa 1895 38in x 15in x 8in



870

Baetens, London, a good second quarter 19th century gilt and patinated bronze mantel clock, the case on four turned feet, and ornamented with fruit and floral festoons and central mask mount, the cylinder containing the movement with gilt, palmette decorated bezel, oak leaf and acorn garland, and surmounted by a Spartan bust, flanked by a pair of ormolu putti who clutch arrows behind their backs and appear to be sneaking up on the central figure, roman numeral white enamel dial, blued steel Breguet style hands, and 8 day fusee timepiece movement, the back plate with plate engraved "Baetens 23 Gerrard St. Soho London"

Condition: gilt and patinated surfaces good with the exception of a spot on the rear of the right leg of the right hand putto, one putto retains one half of one arrow, the other lacking, insect at foot of right putto missing, dial restored, hands with specks of oxide, movement ticking, pendulum replaced

\$3000-\$4000

Circa 1830 13.5in x 14.5in x 2.625in



871

Reinhold Schneckenger, Muhlheim, a monumental late 19th century quarter chiming bracket clock, the walnut case with heavy molded base with applied, high relief floral and scroll carvings, break arch door with bevelled glass and flanking, molded pilasters, also with carved ornament, and with unusual capitals having floral, foliate and central mask carvings, the projecting molded cornice with carved and turned moldings below a balustrade with corbelled corners, the top with four urn and flame finials, a cushion dome with high relief floral carving and central molded plinth with large, festooned urn and flame finial, roman numeral composite dial with silvered chapter ring, gilt spandrels, and the arch with subsidiary dials for chime control, chime selection, and rise and fall regulation, fancy blued steel hands, 8 day fusee movement with deadbeat escapement and Vulliamy pallets, sounding Westminster quarters on gongs or chiming on eight bells, and counting the hours on a large gong, with heavy brass pendulum

\$4000-\$6000

Circa 1885 34.5in x 18in x 12.75in



872

Ateliers de Specialites Electriques et Mecaniques, Paris, to the design of Frank Holden, a rare crystal regulator style electromagnetic timepiece with unusual balance, polished brass case with beveled glasses, arabic numeral dead silvered dial marked "L.R", blued steel hands with center seconds, the wheelwork concealed behind the dial, the vertical balance staff passing through a nickel plated, three tier platform, the upper plate with helical balance spring and regulator, the second tier with contacts for energizing magnet, and the bottom with Y shaped balance, one end with coil, the other with two threaded rods having cylindrical weights for regulation, the top of the staff with crank driving a lever with pawl, advancing the sweep hand at one second intervals

\$1000-\$1500

Circa 1915 9.75in x 6.125in x 4.875in



873

England, a good early 19th century papier mache balloon clock, the japanned case with gilt floral and foliate ornament, the front with oval reserve below 6:00 set with a blue - backed cameo sulphide in imitation of Wedgwood Jasper, the sides with musical trophies and bow-knots with floral pendants, the footed serpentine base with complimentary decoration, and the top with square plinth, arabic numeral white enamel dial with blued steel hands, and 8 day, two train fusee movement with nicely engraved back plate and recoil escapement, striking the hours on a bell, and brass clad, engraved pendulum

\$1800-\$2500

Circa 1815 17.25in x 13in x 8.25in



874

England, a monumental later 19th century bracket clock in the neo Grec style, the quarter sawn oak case with chip and incised line carved molded base below a central, recessed panel with scrolling acanthus, with flanking, incised plinths supporting Gothic columns and with stylized Corinthian capitals, arched door with incised carving and bevelled glass, and steeply pitched top with carved slates, and carved leaf and twig trimmed roof, roman numeral silvered dial with subsidiary chapters for chime function and regulation, substantial, three train fusee movement sounding either Westminster or chime - on - eight - bells quarters, and striking the hours on a large coil gong

\$3000-\$4000

Circa 1875 30.5in x 18.5in x 11.5in



875

J.J. Elliott, London, for Muhrs Sons, Philadelphia, a large mahogany chiming bracket clock, the mahogany architectural case of very good quality and with well executed foliate carved panels with finely stippled backgrounds and the top with carved swags, roman numeral composite dial with gilt, engraved spandrels and engraved center, the top with subsidiary dials for chimes and regulation, blued steel hands, and a very substantial, signed 8 day, three train fusee movement, sounding Westminster quarters on gongs, or Whittington on eight bells, and sounding the hours on a larger gong, with heavy brass pendulum and winding key

\$2000-\$3000

Circa 1900 23.5in x 14.5in x 11in



876

England, a late 19th century Gothic style bracket clock chiming on eight bells, the oak case with molded base below a lancet arch frieze, the canted, projecting corners supporting clustered columns and flanking a molded door with leaf carved ogee arch, all below a stepped gable and octagonal pinnacles with carved tops, case sides with rosewood lancet arch frets, and back with glazed door, engraved, silvered roman numeral dial with blued steel hands and subsidiary dials for chime control and rise and fall regulation, and 8 day, three train fusee movement sounding the quarters on four or eight bells, and counting the hours on a large blued steel gong

\$1500-\$2000

Circa late 19th c 29in x 17.5in x 10.75in



877

Daniel Quare, London, movement in later, purpose made bracket clock case, oak with mahogany veneers and brass furniture with later Roman numeral silvered sheet brass dial with date aperture and regulation control in the arch, blued steel hands, and 8 day, five pillar fusee movement with verge escapement and pull quarter repeat, with beautifully engraved back plate bearing Quare's name.

\$1000-\$1500

17.5in x 10.5in x 7in



878

England, a late 19th century half seconds beating mantel regulator with detent escapement, the oak case with molded base on brass ball feet, break arch top with finials, and arched glass panels at sides and front, the interior with mirrored back, and three turned columns supporting the fusee timepiece movement with half seconds pendulum, Harrison's maintaining power and pivoted detent escapement, polished brass dial with roman numeral silvered chapter ring and arabic seconds above 6:00

\$1000-\$1500

Circa 1880 18.25in x 11.75in x 6.625in



879

France, a 19th century Religieuse style mantel clock, the case with tortoise shell veneers, brass moldings and cast foliate ornament, corners mounted with half Atlantes figures, and the top with gadrooned flame finials, velvet lined, repousse style brass dial set with Roman numeral enamel cartouches, and with foliate mask below, with cartouche signed "Martinot a Paris", 8 day, time and strike movement with square plates

\$1200-\$1800

23.5in x 13.75in x 5in

880

**880**

G. Winter, South Stockton, England, chiming English bracket clock in a case with exotic wood veneers, tapered full turned columns flanking beveled glass front door, with cast brass capitals and bases, brass handles, two brass pineapple finials all resting on turned feet, roman numeral silvered brass dial with strike / chime / silent selector in boss, 8 day, three train spring driven movement with three fusees striking hours on a gong and the quarters on a nest of eight bells

\$1400-\$1800

Circa 1860 20.5in x 17in x 9.5in

881

Winterhalder & Hofmeier, Germany, for M.H. Tilley & Son, Dorchester, an unusual carved oak chiming bracket clock, leaf and dart carved molding below a frieze with foliate carving, bordered above by a gadrooned band, the door also with foliate border and flanking consoles with grotesque masks and botanical drops, the gadrooned cornice molding below a stepped dome top, the lower portion with green man masks and acanthus, and the upper with simple foliate carving, the case sides with egg and dart trimmed frets, having naturalistic carving and central mask, signed roman numeral composite dial with matted center, gilt spandrels, and blued steel hands, the arch with subsidiary dials for chime control and regulation, three train, 8 day movement, chiming quarters on four or eight gongs, the hour counted on a larger, ninth gong

\$1500-\$2000

Circa 1900 22in x 13.75in x 10in

882

Charpentier, Paris, a large gilt and silvered bronze figural mantel clock, the semi elliptical base on scroll feet with classical ornament, and central, front foot with leopard mask below the two tone roman numeral dial with floral center, silvered spade hands, and cascading ivy festoons, surmounted by a seated female figure in a pensive pose, on a stool with hoof feet and draped with an animal skin, signed 8 day, two train pendule de Paris movement striking the hours and half hour on a bell

\$2000-\$3000

Circa 1875 20in x 21.5in x 10.5in

883

Louis Achille Brocot, Paris, for J. Silvani, 13 & 14 Kings Road, Brighton, a large, year going table or mantel clock, the case with molded, white marble base and top containing gilt, ovolo molded frames set with four beveled glasses, signed roman numeral white enamel dial with sunk center and visible Brocot escapement, blued steel Breguet style hands, brass movement with round plates and five barrels, marked "A.B." within a star on the back plate, and with compensated, Ellicott variant bimetallic pendulum of Brocot's design, serial #4313

\$2000-\$3000

Circa 1855 17.75in x 11in x 8.25in

882



883



881



884



884

France, for Tiffany & Co., New York, a late 19th century three piece clock garniture, the patinated bronze case with owl ornamented scroll feet and stylized classical ornament, the incurved sides with decorative pendants with gilt, top - shaped mount, and terminating in a cluster of scrolls and large palmette, the case crowned with a figure of a young woman at a fountain, admiring her own reflection, signed roman numeral metal dial with gilt bezel, decorative center, and gilt Breguet style hands, 8 day pendule de Paris movement signed Tiffany & Co., New York, striking the hours and half hour on a bell, the candelabra with bases matching the clock, and each with a vasiform column supporting the candle holders, four on scrolled arms, and one at the center, dimensions of clock case listed

\$1600-\$2200

Circa 1875 17in x 15in x 5.5in

885

Festéau LeJeune, a Paris, an early 20th century lyre form mystery clock with brilliant ring pendulum, the white marble case mounted with gilt classical and floral ornament, the top with smiling mask above a fruit and foliage festoon, signed arabic numeral white enamel dial with fancy, gilt lyre form hands, and 8 day, two train pendule de Paris movement striking the hour and half hour on a bell, and pendulum with ring of brilliants

\$1500-\$2000

Circa 1910 18.5in x 7.25in x 4.25in

886

France, an extremely large and colorful faience mantel clock, the case shape based on Louis XV clocks, on scroll feet with central, concave scallop shape at base, the case outlined with rococo style leaf and scroll forms, and the top with small, inverted scallop shell, all with very colorful enamel decoration either emphasizing the case shape, or specific art nouveau inspired floral and foliate motifs within the fields created by the shapes, gilt bezel with convex glass and arabic numeral white enamel dial with floral festoons and gilt hands, 8 day, two train pendule de Paris movement striking on a bell

\$1500-\$2000

Circa 1910 21.25in x 15in x 7.5in

887

France, for J. Jennart, a Bruxelles, a good gilt bronze mantel clock, the stepped base on foliate ornamented paw feet and surmounted by a chariot with seated figure of Aphrodite, driven by Cupid, and drawn by two butterflies, the openwork wheel with arrow spokes and roman numeral white enamel chapter ring signed "J. Jennart a Bruxelles" below 6:00, blued steel Breguet style hands, and two train, 8 day pendule de Paris movement with silk suspension, striking on a bell

\$1500-\$2000

Circa 1810 11in x 12in x 5.5in

885



886



887



888



888

Emile Colin & Cie, Paris, a good, late 19th century rococo style mantel clock, a shaped, variegated, multicolor marble plinth supporting the sinuous, gilt base with free form scroll feet, the Louis XV style case with floral and foliate ornament, and surmounted by a cloud - borne allegorical figure representing pride, signed, roman numeral white enamel dial with gilt Louis XV style hands, and 8 day, two train pendule de Paris movement striking on a bell

\$1400-\$1800

Circa 1890 19.75in x 12in x 8.5in

889

France, a good first quarter 19th century gilt bronze mantel clock, the unadorned base on anthemion and medallion ornamented feet, the molded surbase with various regular, overlapping leaf forms, and supporting a mid section with oval bas relief mount flanked by classical ornament, framed with laurel and featuring a seated Athena with small child at her knee, two children reaching for a wreath in her right hand, and a child at the right with scroll and wreath, the composition also including a terrestrial globe, artists palette, pedestal, and divider, all surmounted by a central rectangular enclosure housing the clock, the front with matted ground, fruit festoon, and rose wreath bezel, the enclosure with flanking figures, each studying books and scrolls, aided by a tall, standing oil lamp, the engine turned, roman numeral gilt dial with blued steel hands, and 8 day, two train pendule de Paris movement with silk suspension, striking on a bell

\$1300-\$1600

Circa 1820 19in x 16.25in x 5.5in

890

Baullier & Guyerdet, Paris, a good late 18th century white marble portico clock, the case with footed, rectangular base with gilt anthemion and palmette frieze, supporting two marble pilasters with canephores, each on a stepped plinth with gilt floral medallions, and supporting an entablature with foliate finials featuring palmettes, and flanking the cylindrical clock case with ornamental, gilt lambrequin and surmounted by a marble plinth with gilt basket containing leaves, fruit, and flowers, and cascading ivy, signed roman numeral white enamel dial with gilt hands, and 8 day, two train pendule de Paris movement, with silk thread suspension and striking on a bell, with gilt Eagle of Zeus pendulum

\$1200-\$1600

Circa 1790 20.5in x 12.75in x 3.75in

891

France, a mid 19th century siena marble and patinated bronze Cupid and Psyche mantel clock, on paw feet with leaf with honeysuckle returns, the plinth containing the movement with domed top, gilt lyre mount, and flanking figures showing Cupid receiving a butterfly from Psyche, roman numeral siena marble dial with blued steel hands and egg and dart molded gilt bezel, 8 day, two train pendule de Paris movement with silk thread suspension, striking the hour and half hour on a bell

\$1200-\$1600

Circa 1850 19in x 14.5in x 6in

890



891



889



892



893

**892**

France, a mid 19th century siena marble and patinated bronze Cupid and Psyche mantel clock, on winged paw feet with leaf and berry molded base and bronze mount featuring swans, a laurel festoon held in their beaks and supporting a gryphon, the plinth containing the movement with domed top and with flanking figures showing Cupid receiving a butterfly from Psyche, roman numeral white enamel dial with blued steel Breguet style hands and signed "Brocot Brevete", and 8 day, two train pendule de Paris movement with Brocot's escapement, cam adjusted regulation and Pons rack striking

\$1200-\$1600

Circa 1845 23.25in x 15.5in x 5.625in

893

France, a late 18th century bronze and marble figural mantel clock, the base on toupie feet and with gilt bronze, bas relief plaque featuring putti in the clouds playing various musical instruments, the ends with standing, patinated putti flanking a central, ormolu mounted marble plinth with cylindrical clock case surmounted by a putto with torch and bird, roman numeral white enamel dial with inner date chapter, and large, two train brass movement with recoil escapement and count wheel striking on a bell

\$1000-\$1500

Circa 1785 21.5in x 18.5in x 7in

894

Germany, a rare early 19th century gilt card stock table clock, in the Empire style, on four polished brass ball feet and decorated with gilt, embossed papers and trims, and surmounted by an urn with cloth flowers, and 30 hour verge fusee movement with arabic numeral white enamel dial, the center with polychrome enamel scene, and signed "Girardier a L'aîne"

\$800-\$1200

Circa 1830 12in x 4.75in x 3.125in

895

France, a late 19th century Louis XVI style clock garniture with decorative porcelain panels, the gilt case with in toupie feet and with classical ornament, the base with inset panel having a pink border and polychrome enamel flowers, a pink bordered panel below the dial depicting a couple seated below a tree, and the roman numeral dial with matching color scheme, and putto in the clouds with wreath, and surmounted by a gilt urn with pink ceramic band, and 8 day two train pendule de Paris movement striking on a bell, with matching candlesticks

\$500-\$700

Circa 1880 18in x 14in x 5.5in

895



894





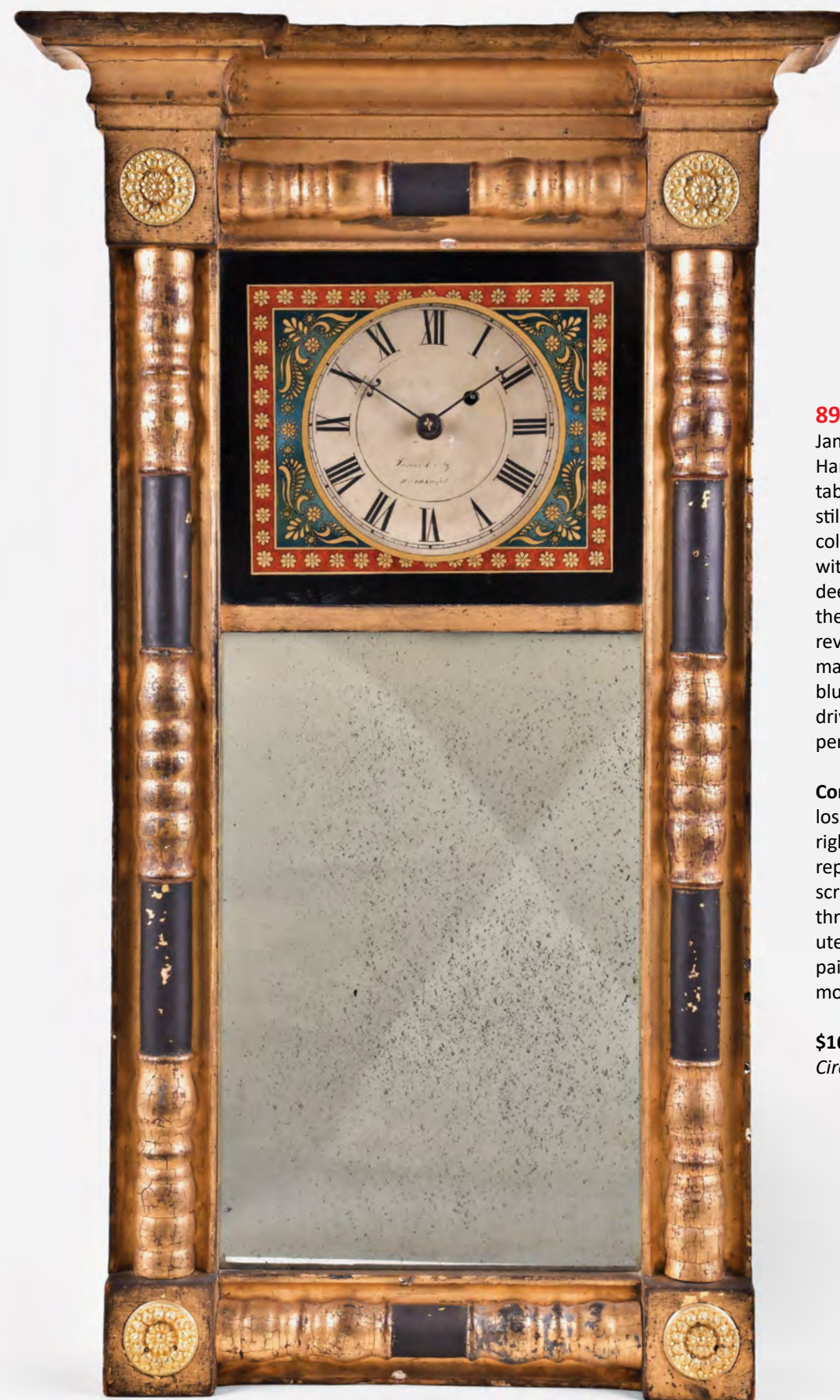
896

Oliver Bracket, Vassalboro, Maine, rare mantel clock in a miniature mahogany and mahogany veneered pillar and scroll case with painted metal dial, barbed hands, and 30 hour time and strike weight driven brass movement

Condition: case has an old finish with several shrinkage cracks and some repairs to door. Case is mortised and tenoned together as well as the door. Top a replacement, replaced tablet, door pull likely original, original painted metal dial has some minor paint loss in the black painted area, original hands, dial is lightly soiled with some staining. This is the only known example of a pillar and scroll by this maker.

\$3000-\$5000

Circa 1830 22in x 12.25in x 3.75in



897

James Cary, Brunswick, a 19th century New Hampshire-style mirror clock, the gilded, tabernacle mirror style case with concave stiles and rails with applied, split turned columns, the corners with blocks adorned with stamped brass mounts, and top with deep cavetto cornice, the lower portion of the door with mirror, and the upper with reverse painted glass surround for the roman numeral, white painted dish dial with blued steel barbed hands, and 8 day, weight driven timepiece movement with brass clad pendulum

Condition: frame dirty, with cracks in gesso, losses to gesso and gilding, upper left and right cornice moldings with split, glasses replaced, dial with craquelure and dirt, a scratch at 1:30, and losses to signature, three turns for retaining dial missing, minute hand with minor bends, interior of case painted brown, movement supports added, movement ticks, weight replaced

\$1600-\$2200

Circa 1825 36.75in x 21.5in x 7in



898
Annual Wind Clock Co. Middletown, Conn., a year running shelf clock, the movement with 3 shaped brass plates, the rear and middle containing 4.5 inch spring barrels driving a 6 wheel train, which is contained between the front and middle plate, with lever escapement and cut bimetallic balance, gilt brass bezel with bevelled glass and arabic numeral silvered dial with aperture for viewing escapement, and blued steel hands

\$1000-\$1500
Circa 1905 10.25in x 5.5in x 4.5in



900



899

899
Bradley and Hubbard, Meriden, Conn., "Topsy", blinking eye novelty clock, cast iron case, paper on metal dial, moon hands, and 30 hour spring driven brass movement

\$1000-\$1400
Circa 1860 17in x 9in x 6.25in

900
Unknown, but most likely the American Clock Co., New York, mantel clock, cast iron case, paper on metal dial, spade and pointer hands, 8 day, time and strike spring driven brass movement.

\$400-\$600
Circa 1855 20in x 15.75in x 4.25in

901
Chauncey Jerome, New Haven, Conn., shelf clock, mahogany veneer, painted wood dial, maltese hands, and 8 day spring driven fusee brass movement

\$300-\$400
Circa 1850 23.5in x 15in x 4.5in



901



902

J.C. Brown, Bristol, Conn., lyre wall clock, with mahogany veneered case, painted metal dial, spade and pointer hands, 8 day spring driven brass timepiece movement

Condition: Mahogany veneered case in nice condition with an old finish, dial mounting blocks are replacements, the painted dial has age darkened with some loss to the numbers and paint loss at winding arbor, center and corners, dial holes have been enlarged slightly, original painted tablet is cracked and with paint loss, movement signed, original green paper backing with some loss.

\$3000-\$4000

Circa 1850 28in x 12.75in x 4.25in

903

Atkins, Whiting & Co., Bristol, Conn., ogee octagon wall clock, rosewood veneer and ripple molding case, painted metal dial, pierced spade hands, and 30 day timepiece, double wind wagon spring driven brass movement.

\$3000-\$4000

Circa 1852 26in x 26in x 5.5in



904

Attributed to Williams & Hatch, North Attleboro, Mass., a "Baltimore Banjo" clock for J.J. Beals, 16 Hanover St., Boston, case with rosewood graining, asphaltum backed glasses with gold leaf decoration, roman numeral white painted metal dial, blued steel arrow style hands, brass 8 day, timepiece movement, and gilt wooden pendulum rod with brass pendulum bob

\$2000-\$3000

Circa 1865



905

Timothy Chandler, Concord, New Hampshire, carved lyre form wall clock, with mahogany case, painted metal dial, and 8 day, weight driven brass movement

\$1000-\$2000

Circa 1835 38in x 11.5in x 5in



906

Joseph Ives, Bristol, Conn., early mirror clock, mahogany veneered case, painted metal dial, Terry type hands, and 8 day, weight driven skeletonized brass plate movement

\$800-\$1200

Circa 1818 51in x 20in x 5.75in



907

Ted Burleigh, Winchester, Mass., "Girandole" hanging clock in the style of Lemuel Curtis, the gold leafed mahogany case with reverse painted convex throat and lower tablets and arabic numeral painted metal dial, 8 day, time only, weight driven Kilbourn & Proctor movement, dated 1976, serial #9

\$3000-\$5000

Circa 1976 46in x 13in x 4.5in



908

Walter H. Durfee, Providence, Rhode Island, true lyre banjo clock, mahogany case, painted metal dial, banjo hands, Waltham 8 day time only, weight driven movement, serial #5940

\$3000-\$4000

Circa 1911 36in x 11.25in x 4in



909

Elmer Stennes, Weymouth, Mass., "Girandole" hanging clock in the style of Lemuel Curtis, gilt and mahogany case with reverse painted convex throat and lower tablets, arabic numeral painted metal dial, barbed arrow and open loop hands, 8 day, weight driven brass movement, case stamped 47 and 73.

\$2000-\$3000

Circa 1973 44in x 12in x 5in



910

Foster Campos, Pembroke, Mass., banjo clock or patent time-piece in a mahogany and rosewood banded case with reverse painted tablets by Tom Moberg, roman numeral painted metal dial, 8 day, time only, weight driven movement stamped with Campos name, case stamped 35 and 82, weight also stamped with Campos name

\$1000-\$1500

Circa 1982 42.5in x 10.5in x 3.75in



911

Ansonia Clock Co., New York, NY, "Antique Hanging" wall clock in a carved oak case with brass ornamentation, embossed brass dial with roman numeral cartouches, 8 day time and strike movement driven by two rope twist brass weights

\$2000-\$3000

Circa 1904 46.5in x 16.75in x 8.5in



912

Ansonia Clock Co., New York, NY, "Juno Ball Swing", swinger novelty clock, cast spelter case, french style hands, 8 day spring driven brass movement

\$1500-\$2000

Circa 1901 28in x 7in x 7in



913

Ansonia Clock Co., New York, NY, "Antique Cabinet" mantel clock, cherry case with applied cast brass ornaments, embossed brass dial with enamel cartouche numerals, fleur de lis hands, 8 day time and strike spring driven movement

\$800-\$1000

Circa 1894 19in x 9.25in x 8.25in

914



917

**914**

Ansonia Clock Co., New York, NY, "Crystal Regulator No. 3" in a gilt four glass case with Royal Bonn top and base, porcelain dial with exposed escapement and brilliant surround dial and pendulum, 8 day, time and strike spring driven movement

\$1200-\$1600

Circa 1914 18in x 9.25in x 8in

915

Ansonia Clock Co., New York, NY, "La Rive", mantel clock, Royal Bonn porcelain case with matching set of vases, enamel dial, fleur de lis hands, 8 day time and strike spring driven brass movement with visible escapement

\$700-\$900

17.75in x 9.5in x 5.5in

916

Ansonia Clock Co., New York, NY, "La Clair", mantel clock, Royal Bonn porcelain case, enamel dial, fleur de lis hands, 8 day time and strike spring driven brass movement with visible escapement

\$600-\$800

Circa 1905 15in x 11in x 5.25in

917

Ansonia Clock Co., New York, NY, "La Grande", mantel clock, Royal Bonn porcelain case, enamel dial, fleur de lis hands, 8 day time and strike spring driven brass movement with visible escapement

\$500-\$700

Circa 1895 20.5in x 8.5in x 4in

918

Ansonia Clock Co., New York, NY, "La Calle", mantel clock, Royal Bonn porcelain case, enamel dial, fleur de lis hands, 8 day time and strike spring driven brass movement with visible escapement

\$400-\$600

Circa 1904 14.5in x 9.75in x 5.75in

919

Ansonia Clock Co., New York, NY, "La Corsica", mantel clock, Royal Bonn porcelain case, enamel dial with exposed escapement, fleur de lis hands, 8 day time and strike spring driven movement

\$400-\$600

Circa 1901 12in x 13.75in x 5in

919



916



918



915



920



921



920

Boston Clock Co., Boston, Mass., an unusual hanging clock in a cherry case with carved bezel and art glass tablet, 12 inch painted metal dial signed "BOSTON CLOCK CO." with blued steel trefoil hands, 8 day, time only weight driven movement

\$1000-\$1500

Circa 1895 38in x 17in x 6in

921

Chelsea Clock Co., Boston, Mass., "Pendulum No. 1" hanging clock in an oak case with painted metal dial, 8 day, time only weight driven brass movement, exposed brass pendulum bob, serial #1782

\$500-\$700

Circa 1898 33in x 16in x 5in

922

Chelsea Clock Co., Boston, Mass., "Mariner Limited Edition Model 2003" mantel clock in a brass, the yacht wheel case on a patinated base, 5.5in arabic numeral silvered brass dial and spade hands, 8 day time and ship's bell strike spring driven movement, including the original Chelsea factory box, winding key and instruction pamphlet

\$1000-\$1500

Circa 2015 17.5 x 12.25in x 5.5in

922





923

E. Howard & Co., Boston, Mass., "No. 14 Regulator" hanging clock in a walnut case with reverse painted and gold leaf lower tablet, roman numeral 10 inch painted metal dial with blued steel moon hands, 8 day, time only, weight driven movement stamped "E. HOWARD & CO. BOSTON" with damascened pendulum bob and gold leafed pendulum rod

\$6000-\$8000

Circa 1885 45in x 15in x 6in



924

E. Howard & Co., Boston, Mass., "No. 1 Regulator" hanging banjo timepiece, with grain painted cherry case, painted metal dial, diamond hands, and 8 day, weight driven brass movement.

\$5000-\$8000

Circa 1858 50in x 19.75in x 6in



925
 E. Howard & Co., Boston, Mass., "No. 10 Regulator" figure eight hanging clock, the black walnut case with painted metal dial, moon hands, and 8 day, weight driven brass movement
\$4000-\$6000
Circa 1874 33in x 11in x 5in



926
 E. Howard & Co., Boston, Mass., "No. 41 Regulator" hanging clock in a carved walnut case with reverse painted lower tablet, roman numeral painted metal dial, 8 day time only, weight driven movement
\$3000-\$4000
Circa 1874 48in x 15.75in x 5.5in



927
 E. Howard & Co., Boston, Mass., "No. 59-8 Regulator" hanging clock in a cherry case with cherry weight baffle, three turned finials and three turned, carved drops, roman numeral 8 inch painted metal dial signed "E. HOWARD & CO. BOSTON" with blued steel moon hands, 8 day, time only, weight driven movement signed "E. HOWARD & CO. BOSTON" and stamped "5" with damascened pendulum bob and silvered pendulum rod
\$3000-\$4000
Circa 1890 46.5in x 15.5in x 6.5in



928
 Howard & Davis, Boston, Mass., "No. 2 Regulator" hanging banjo clock, grain painted cherry case with reverse painted throat and lower tablets, the lower tablet with "PRESENTED BY CHARLES RICE" in gold leaf, paper on metal dial with moon hands, and 8 day, time only, weight driven brass movement
\$2500-\$3500
Circa 1850 38in x 15.5in x 4.5in



929

E. Howard & Co., Boston, Mass., “No. 11 Regulator” or “Keyhole” hanging clock, rosewood grain painted mahogany case with reverse painted lower tablet, painted metal dial with E. Howard & Co. signature in script with Boston block printed beneath, 8 day, time only, weight driven brass movement

\$1500-\$2000

Circa 1880 31.25in x 13.5in x 4.5in



930

E. Howard & Co., Boston, Mass., “No. 27” marble front hanging clock, wooden case with marble front and reverse painted tablet, painted roman numerals and E. Howard & Co, Boston signature on marble surface, with trefoil hands and 8 day, weight driven, time only brass movement with damascened pendulum bob

\$1200-\$1600

Circa 1875 35in x 18in x 5in



931

E. Howard & Co., Boston, Mass., “No. 28”, marble front wall clock, painted wood and marble case, painted marble dial, trefoil hands, and 8 day, weight driven brass movement

\$800-\$1200

Circa 1874 30in x 14.5in x 3.5in



932

Ithaca Calendar Clock Co., Ithaca, NY, “No. 12 Hanging Kildare”, double dial calendar clock, mahogany case, paper on metal dial, maltese hands, 8 day, time and strike spring driven brass movement.

\$4000-\$6000

Circa 1880 32.5in x 13.5in x 7in



933

E. Howard & Co., Boston, Mass., 150th anniversary limited edition banjo wall clock, banded mahogany case, painted metal dial, barbed hands, and 8 day, weight driven brass movement.

\$1000-\$1500

Circa 1992 34.5in x 10.25in x 4in



934

Ithaca Calendar Clock Co., Ithaca, NY, "No. 5 1/2 Hanging Belgrade", double dial calendar clock, ash case with paper on metal dial, maltese hands, and 8 day, double wind spring driven brass movement.

\$3000-\$4000

Circa 1880 37in x 14in x 7in



935

Ithaca Calendar Clock Co., Ithaca, NY, "No. 13 Shelf Kildare", double dial calendar shelf clock, mahogany case, paper on metal dials, maltese hands, and 8 day, time and strike spring driven brass movement.

\$2000-\$2500

Circa 1880 26.5in x 13in x 6.75in



936

Ithaca Calendar Clock Co., Ithaca, NY, "No. 3 1/2", double dial calendar shelf clock, walnut case with ebonized trim, paper on metal dials with nickel plated trefoil hands, 8 day time and strike spring driven brass movement

\$1500-\$2000

Circa 1881 20.5in x 10in x 5in



937

Ithaca Calendar Clock Co., Ithaca, NY, "No. 6 1/2 Belgrade" shelf clock, with walnut case, paper on metal dial, maltese hands, and 8 day time and strike spring driven brass movement

\$1200-\$1600

Circa 1880 32.5in x 14.75in x 6.75in



938

Seth Thomas Clock Co., Plymouth Hollow, Conn., "Regulator No. 1 Extra", rosewood veneer case with reverse painted and gold leafed lower tablet, 14 inch painted metal with Seth Thomas logo and blued steel hands, 8 day, time and strike, weight driven movement with damascened pendulum bob with scene of Seth Thomas factory and gold leafed pendulum rod

\$1500-\$2000

Circa 1862 42in x 19in x 5in



939

Seth Thomas Clock Co., Thomaston, Conn., "Rex" mantel clock, bronze finished metal case, enamel dial, spade hands, 8 day brass time and strike spring driven movement

\$400-\$600

Circa 1909 12.5in x 8in x 5in



940

Seth Thomas Clock Co., Thomaston, Conn., "Chime Clock No. 2000", eight bell sonora chime, with mahogany case, composite dial, serpentine hands, 8 day, time and quarter strike spring driven brass movement.

\$2000-\$3000

Circa 1915 16in x 12in x 9in



941

Seth Thomas Clock Co., Thomaston, Conn., "Regulator No. 6" hanging clock, walnut case, painted metal dial, spade hands, 8 day, weight driven brass movement with nickel damascened pendulum bob and nickel plated weight

\$1500-\$2000

Circa 1883 49in x 49in x 16.75in



942

Seth Thomas Clock Co., Thomaston, Conn., "Regulator No. 18" hanging clock in a walnut case with 14 inch painted metal dial, blued steel spade hands, and with Seth Thomas logo, 8 day, time only movement with maintaining power, driven by a nickel plated brass weight, and seconds pendulum with damascened nickel pendulum bob and pulley

\$1200-\$1600

Circa 1885 54in x 20.5in x 5in



943

Seth Thomas Clock Co., Thomaston, Conn., "Regulator No. 30" wall clock, cherry case with painted dial, spade hands, and 8 day, weight driven brass timepiece movement.

\$800-\$1200

Circa 1909 49in x 19in x 8in



944

944

The Prentiss Clock Improvement Co., New York, NY, "Empire" model, hanging calendar clock, the walnut case with painted metal dial, spade hands, and 30 or 60 day, double wind spring driven brass movement, case stamped 3714

\$700-\$1000

Circa 1897 37in x 13.5in x 6.5in



945

945

Welch Spring & Co., Forestville, Conn., "Gale Drop Calendar, Model No. 2", hanging calendar clock, grain painted and rosewood veneered case, paper on metal dial, and 8 day brass spring driven movement

Condition: grain painted and rosewood veneered case has been refinished, some loss to gilding on lower door, original paper dial in very nice condition for it's age with some staining on the subsidiary dials, original tablet, original hands, dark paper label with some scattered loss.

\$1800-\$2500

Circa 1880 30.5in x 17in x 4.75in



946

946

E.N. Welch & Co., Forestville, Conn., "Patti VP" shelf or mantel clock, rosewood and rosewood veneer case with glazed front and sides, turned columns with applied roundels, and top with central keystone and turned finials, roman numeral white painted dial with blued steel trefoil hands, and 8 day time and strike movement having a polished bronze pendulum with decorative pressed glass insert

\$1000-\$1500

Circa 1880 19in x 12.125in x 6.25in

Index

Alarm clock 793

American Waltham Watch Co. 777-779

Annual Wind Clock Co. 898

Annular Clock 808

Ansonia Clock Co. 911-919

Antique Cabinet (Ansonia Clock Co.) 913

Antkique Hanging (Ansonia Clock Co.) 911

Astronomical Regulator 814, 832, 834,

Ateliers de Specialites Electriques et Mecaniques 872

Atkins, Whiting & Co. 903

Atmos Clock 797, 798

Automaton 740, 741, 742, 743, 744, 745

Avery, Milton 706

Balloon Clock 873

Banjo Clock 819, 822, 904, 910, 924, 928

Battery, Electric Clock 872

Baullier & Guyerdet 890

Bellamy, John Haley 702

Binnacle 785

Bird Cage 746

Bofill, Antoine 716

Bohemia Glass 718

Boston Clock Co. 826, 827, 920

Bracket Clock 874-878, 880, 881

Bracket, Oliver 896

Bradley & Hubbard 899

Brown & Son, D. 814

Brown, J. C. 902

Burleigh, Ted 907

Caldwell, E. F. 795

Calendar Clock 823, 932, 934-937, 944, 946

Campos, Foster 910

Candlesticks 730

Canes 734-736

Carriage Clock 726, 799, 803-806

Cary, James 897

Chandler, Timothy 905

Charpentier 882

Chelsea Clock Co. 921, 922

Chime Clock 2000 (Seth Thomas Clock Co.) 940

Chinese Kang Cover 714

Chinese Stand 710

Chronometer 782-784, 786-789

Cigarette Case 765

Cole, James 839

Cross 728

Crystal Regulator 872, 914

Crystal Regulator No.3 (Ansonia Clock Co.) 914

Deck Watch 781, 790

Dent, E. 785

Desk Clock 795, 796

Desk, Davenport 711

DeVille (Omega) 771

Dressing Mirror 733

Durfee, Walter H. 908

Elgin National Watch Co. 790, 791

Ellicott 801

Elliott, J. J. 875

Emile Colin & Cie 888

Empire (Prentiss Clock Improvement Co.) 944

Farkas, Jean 744, 745

Fellows & Schell, Louis C. 834

Festeau Lejeune 885

Feuchere & Fossey 808

Figural Clock 808-810, 882, 887-889, 891-893

Frere, Charles Theodore 704

Frodsham, Charles 783, 851

Gale Drop Calendar (Welch, Spring & Co.) 945

Gallam & Sons 868

Gallery Clock 867, 903

Gallet, Switzerland 768

Garniture 895

Gautschi & Sons, H. 752

Girandole Clock 822, 907, 909

Glass Shade 716

Griesbaum, Karl 747-749

Gudin, Jean Antoine Theodore 705

Guilmet, Andre Romain 847, 850

Hamilton & Inches 867

Hamilton Watch Co. 775, 786-789

Heintz Art Metal Shop 722

Herschede Hall Clock Co. 835

Herz & Sohn, M. 859

Howard & Co., E. 776, 816-818, 820, 828, 833, 923-927, 929-931, 933

Howard & Davis 928

Hubner, Joseph 836

Irving & Casson 812

Ithaca Calendar Clock Co. 932, 934, 935

Ives, Joseph 906

Jaeger LeCoultre 797

Jerome, Chauncey 901

Jewelry 759-764

Jim Clark (Gallet) 768

Johanssen & Co., A. 782

Jones, George 832

Juno Ball Swing (Ansonia Clock Co.) 912

Kange Cover 714

Kinkozan, Japan 723

Kirk & Son, S. 729

Kosmic (E. Howard & Co.) 820

La Calle (Ansonia Clock Co.) 918

La Clair (Ansonia Clock Co.) 916

La Corsica (Ansonia Clock Co.) 919

La Grande (Ansonia Clock Co.) 917

La Rive (Ansonia Clock Co.) 915

Lambert, Leopold 740

Lantern Clock (Japan) 844

LeCoultre & Cie 797, 798

Lenzkirch 853-857

LeRoy & Fils 805

Liberty & Col 726

Loetz, Klostermuhle 717

Longines, Switzerland 769

Louis Achille Brocot 883

Lyre Clock 902, 905, 908

Makura Dokei Clock 841

Mariner (Chelsea Clock Co.) 922

McCabe, James 799

Mechanisch Musikwerke Manufaktur 746

Memomatic (Omega) 770

Mermond Freres 753

Microscope 739

Mirror Clock 897, 906

Mourning Picture 703

Music box, Cylinder 752, 756

Music Box, Disc 751, 753-755, 757, 758

Mystery & Swinger 811, 846, 847, 885, 912

Needlework 703

New Haven Clock Co. 830

No. 1 Regulator (E. Howard & Co.) 924

No. 2 Regulator (Howard & Davis) 928

No. 3 1/2 (Ithaca Calendar Clock Co.) 936

No. 5 1/2 Hanging Belgrade (Ithaca Calendar Clock Co.) 934

No. 6 1/2 Belgrade (Ithaca Calendar Clock Co.) 937

No. 7 Regulator (E. Howard & Co.) 816

No. 8 Regulator (E. Howard & Co.) 817

No. 10 Regulator (E. Howard & Co.) 925

No. 11 Regulator (E. Howard & Co.) 929

No. 12 Hanging Kildare (Ithaca Calendar Clock Co.) 932

No. 13 Shelf Kildare (Ithaca Calendar Clock Co.) 935

No. 14 Regulator (E. Howard & Co.) 923

No. 27 Marble front (E. Howard & Co.) 930

No. 28 Marble Front (E. Howard & Co.) 931

No. 41 Regulator (E. Howard & Co.) 926

No. 49 Regulator (E. Howard & Co.) 828

No. 59-8 Regulator (E. Howard & Co.) 927

No. 70 Regulator (E. Howard & Co.) 820

No. 85 Regulator (E. Howard & Co.) 818

Office Calendar No.5 (Seth Thomas Clock Co.) 823

Oil Painting 704, 705, 707, 709

Olympia Music Box Co. 754

Omega, Switzerland 770, 771

Orrery 807

Oyster Perpetual (Rolex Watch Co.) 767

Painting 704, 705, 707, 709

Patek, Philippe & Co. 774

Pattern No. 83 Hall Clock (Herschede) 835

Patti VP (E. N. Welch) 946

Paul Newman (Longines) 769

Pendulum No. 1 (Chelsea Clock Co.) 921

Petrzyk, L. 861

Pillar Clock (Japan) 842, 843

Plaque, Carved 702

Plato & Co. 837

Polyphon Musicwerke 751

Poole, John 784

Prentiss Clock Improvement Co. 944

Quare, Daniel 877

Railroad Clock 821

Raingo Freres 807

Regina Music Box Co. 757, 758

Regulator No. 1 Extra (Seth Thomas Clock Co.) 938

Regulator No. 6 (Seth Thomas Clock Co.) 941

Regulator No. 6 double time (Seth Thomas Clock) 821

Regulator No. 7 (Welch, Spring & Co.) 824

Regulator No. 8 (Welch, Spring & Co.) 825

Regulator No. 10 (New Haven Clock Co.) 830

Regulator No. 10 (Seth Thomas Clock Co.) 813

Regulator No. 18 (Seth Thomas Clock Co.) 942

Regulator No. 19 (Seth Thomas Clock Co.) 815

Regulator No. 30 (Seth Thomas Clock Co.) 943

Regulator No. 31 (Seth Thomas Clock Co.) 829

Reid Pocket Chromometer 780

Religieuse Clock 879

Reliquary Cross 728

Revere, Paul 729

Rex (Seth Thomas Clock Co.) 939

Roberts, Evan 781

Rolex Watch Co. 766, 767, 773

Roulet & Decamps 741, 742, 743

Runner, Ningxia 713

Saddle Rug, Ningxia 715

Sandzen, Birger 708

Schnekenburger, R. 869, 871, 938-940

Seth Thomas Clock Co. 813, 815, 821, 823, 829, 938-943

Shaku Dokei Clock 840

Shilbler, George W. 725

Shin'ichi 721

Sign, Enameled 700, 701

Singing Bird Cage 746

Skeleton Clock 852

Sonora Chime 940

Spaulding & Co. 792

Spool Cabinet 712

Steam Engine 737, 738

Stella 753

Stennes, Elmer 909

Sturgeon, Sam 719

Submariner (Rolex Watch Co.) 766

Symphonion Manufacturing Co. 755, 837

Taber, E. 831,

Table Clock 802, 848, 894

Tavern Clock 868

Tea Caddy 725

Thread Cabinet 712

Tiffany & Co. 884

Tiffany, Lewis Comfort 720, 796

Topsy (Bradley & Hubbard) 899

Torsion Pendulum 869

Travel Clock 792

Uhrenfabrik Gebruder Resch 862

Vase 717-724,

Vienna Regulator 836

Wadokei Clock 842, 843

Wakmann Watch Co. 772

Waltham Clock Co. 812, 822, 838

Watch Bands 773

Welch & Co., E. N. 946

Welch, Spring & Co. 824, 825, 945

Whistler 747-750

Willard & Son, Simon 819

Williams & Hatch 904

Winterhalder & Hofmeier 881

Writing Desk, Traveling 731, 732

Yagura Dokei Clock 844

Schmitt Horan & Co. General Terms & Conditions

SALES TAX and BUYER's PREMIUM: You agree to pay the Buyer's Premium on every item purchased. The Buyer's Premium is a percentage of the hammer price of each item added to the sale total for that item. There is NO sales tax in New Hampshire. The Buyer's Premium is 20% of the hammer price.

SPECIAL EVENT: The special event auction of June 11, 2022 will not offer phone bidding, internet bidding, nor absentee bidding. Bidder must be in attendance or have someone represent them in attendance to bid. See list of recommended Buyer's Agents below for suggestions.

LIVE BIDDING: The June 11 & 12, 2022 auction is open to the public and live in-person attendance is allowed and encouraged. For the auction on Sunday, June 12 we also offer several alternatives to attending in person, including our own live bidding software at bids.schmitthoran.com. You may also bid live at www.invaluable.com or www.liveauctioneers.com or www.bidsquare.com. There is an extra 5% fee charged by the third party bidding services for internet bidding. The total Buyer's Premium, which includes the 5% fee, on all third party purchases is 25%.

PHONE BIDS: On items, selling on June 12, 2022 you may register to bid via telephone. It is necessary to contact us at least to 72 hours prior to the auction to arrange for phone bidding. Pre-registration is required.

ABSENTEE or LEFT BIDS: In all cases, a left or absentee bid will be executed for as low a price as possible. Many absentee bids lose by only one bid, a frustration that can be reduced if a live person has authority to bid "one more time". Therefore, we offer **PLUS ONE (+1)** bidding format to allow our absentee bidders to be more competitive, contact us for details. Bid forms are available on our web page or in the rear of the catalog. You may submit your bid online, by fax, snail mail or e-mail no later than 48 hours prior to the start of the auction to: **bids@schmitt-horan.com**. Absentee bidding and phone bidding services are provided by Schmitt Horan & Co. as a courtesy to our clients. Schmitt Horan & Co. cannot be held responsible or liable for failure to receive or execute absentee bids.

BUYER'S AGENT: We are increasing access to live bidding agents, who can independently execute your bids the day of the sale. This service provides an independent set of eyes to validate a potential purchase or to provide flexibility in spending needs. Other additional services provided by these agents include careful packing and flexible delivery options. Buyer's Agents generally charge a commission on each successful sale, which they will discuss with you prior to executing your bids. Agents available for our June 11 & 12, 2022 sale are listed below:

Watches & Antiques

John Kovacic jkovacic@verizon.net or (315) 823-1205

Clocks & Antiques

Rick Merritt rmerritt@ptd.net or (610) 780-5979

Clocks

Russel Junck russjunck@gmail.com or (515) 249-3911

PAYMENT FOR SUCCESSFUL BIDS: We will normally notify successful bidders within three business days of the auction. We use e-mail to notify bidders and postal mail if a client does not have e-mail available. Personal checks drawn on a U.S. bank are acceptable. We also accept VISA, MasterCard, Discover, American Express and Paypal, all subject to our standard 20% Buyer's Premium. Note that shipping charges are extra and will be billed by Schmitt Horan & Co. or a third party at the time of shipment. Payment is due on receipt of invoice, and no later than 30 days from the date of the auction. Items not paid for within the 30 days from the date of the auction will be charged a 2% monthly interest rate on the balance due. Large international transactions may be performed via wire transfer. Details available upon request.

TEMS & ACCESSORIES: It is the buyer's responsibility to verify that he / she has received accessories that may be separate when taking possession of their merchandise. Items purchased by bidders off site are not available for pick up during the sale at the auction hall.

PICK UP IN LIEU OF SHIPPING: Purchases by absentee bidders, phone bidders or internet bidders may be picked up no sooner than 3 business days following the sale. You or your agent may arrange pickup by appointment at our office in Candia, NH. Please plan to settle your account at time of pick up. Items left in our custody for over 30 days from the date of the auction will be charged a storage fee of \$25 per item per week, which must be paid before items are released. We shall not be held liable for damage occurring to any item left in our custody after 30 days from the date of the auction.

SHIPPING: We use outside companies to ship clocks that provides services worldwide: Please see Vendor Section for details. We are often able to offer "in-house" shipping on watches.

ESTIMATES: After each description, we have indicated a high and low dollar estimate that should be used as a general guide. The final price may vary considerably from these estimates.

RESERVES: There are few items in this sale with a reserve, or confidential minimum selling price, established with the consignor or vendor. Items failing to sell will be noted in the results sheet as \$0.00.

ITEM DESCRIPTIONS & CONDITIONS: Employees do their best to aid and assist the customer, however any statements made by Schmitt Horan & Co. employees, agents or contractors are not considered a definitive record of what is being sold. The final record of what is being sold in a lot under any and all circumstances is the catalog provided by Schmitt Horan & Co., both printed and online. If there is a discrepancy between employee statements and the catalog, the catalog is the final and ultimate legal record of what is offered in the lot. We do our best to identify restoration, alteration or other condition issues in the condition report. We shall not be held liable for failure to do so. **IT IS THE RESPONSIBILITY OF THE BUYER TO CONFIRM CONDITION PRIOR TO BIDDING.** If the lot description includes the words "as found" or "as is" the item is sold without any guarantees. **All lots containing multiple items are considered in "AS IS" condition and cannot be returned.** General maintenance items such as broken suspension springs, broken or missing weight cords, & missing keys are not mentioned. Most clocks and watches will require cleaning and service after purchase. All costs associated with this are the responsibility of the client. Dimensions are approximate.

PHOTOGRAPHS: Please note, some items when photographed, particularly watches, may have shadows, reflections or other marks that are a result of the photographic process and are not permanent. Both buyer and seller grant unrestricted use of auction photographs and prices realized to Schmitt Horan, LiveAuctioneers.com, Invaluable.com and Bidsquare.com.

RETURNS AND REFUNDS: Returns will be considered only for items that do not conform to catalog description. **UNDER NO CIRCUMSTANCES WILL RETURNS BE ACCEPTED OR REFUNDS ISSUED LATER THAN 30 DAYS AFTER THE AUCTION.** If there is a problem and a refund or adjustment is requested we ask to be notified within one week of the auction and require to be notified ABSOLUTELY no later than 30 days of the auction, no exceptions. Transit damage alone is not sufficient reason to return an item. We will assist in claims against transport companies.

DEFAULT and LITIGATION: REGISTRATION TO BID INDICATES ACCEPTANCE BY THE BIDDER OF THESE TERMS ENFORCEABLE AS A NEW HAMPSHIRE CONTRACT. Schmitt Horan & Co. will not be liable for default by either the buyer, consignor or the vendor. No purchase shall be claimed or removed until paid for in full. Schmitt Horan & Co. reserves the right to refuse to accept bids made by a defaulting buyer at any future auction and to collect all costs and attorney's fees from the buyer associated with litigation and storage involving default. All legal disputes arising from this contract shall be disputed, litigated or mediated under New Hampshire law in the State of New Hampshire. All consignors or vendors are represented in our records by either name or a code directly associated with that name and are also a legal party to this contract.

VENDORS & TRADE RELATIONS

Transport/Shipping

These are blanket wrapped hand delivery specialists. Ask for quotation.

>Mr. Scott Salzarulo, 200 W. Housatonic, #20, Pittsfield, MA 413-212-1252

>Ms. Wendy Buckus, 64 Hutchins, Concord, NH, 03301, 603-491-5199, nwtransport@aol.com

>Mr. Scott Cousins, 22 Nichols St. Merrimac MA 01860, scottcousins22@aol.com, (978) 419-9353

>Sure Express Worldwide, 110 Industrial Way, Portland, ME 04103, (800) 335-9996, sureexpress@maine.rr.com

>Top Notch Transport, Tom & Lynn Hodgson, (309) 253-9700, infotopnotchtransport@gmail.com

Packing, Crating & Shipping (Standard Big Box Shipping, UPS, FED EX, USPS)

>Parcel Room, 1465 Woodbury Ave, Portsmouth, NH 03801 (603) 431-4205, email auctions@parcelroom.com

>The UPS Store, 35 Manchester Rd Ste 11A, Derry, NH 03038, (603) 434-9899, store4686@theupsstore.com

Barometer Repair

>Winchester, MASS, 01890, Wayne Paskerian, (781) 729-0113, winway2@verizon.net

Clock & Watch Sales & Repair MID-WESTERN & WESTERN STATES

>Carlsbad, CA, 92008, Richard Ivkovich, 2916 State St, (760) 729-1225

>Costa Mesa, CA 92627, Robert Emenger, Buck's Clock Shoppe, 440 E. 17th St, (949) 631-3215, bucksclockshoppe@msn.com

>Laguna Beach, CALIF, 92651, Dean Armentrout, 2185 Laguna Cyn-#B-1, 949-494-2711, dean-armentrout-antiques.com

>San Diego, CALIF, 92103; Time Traveler, Rich Wauson, 4227 Park Blvd, 619-298-5391, rew11ttc@gmail.com

>Palatine IL, 60067, Tick-Tock Clock Repairs Inc., 342 South Hart St, 847-991-4230, www.ticktockclock.com

>Mendota Height, MN, 55118, Cutter Edge, Inc 1169 Veronica Ln, (612) 280-5560 wcutter@cutteredge.com

>Oklahoma City, OK, 73122 Richard Garrett, House of Time, 3144 N MacArthur, (405) 946-0029 rghorologist@hotmail.com

Clock & Watch Sales & Repair EASTERN STATES & CANADA

>Burlington, CONN, 06013; Mel Brown, 37 Village Lane, 860-673-2256 – Tickdoc1@aol.com

>E. Norwalk, CONN, 06855; The Clockery, 14 Van Zant St, 203-838-1789-www.clockery.com

>Cromwell, CONN, 06051, Frank De Felice, New Britain Clock Repair, 26 Edgewood St, 860-635-5599

>North Haven, CONN, 06473, Yankee Clock Peddler, (203) 288-4250, www.yankeeclockpeddlerct.com

>Tampa , FLORIDA, 33612, Boyd Clock Repair, 11620 N. Florida Ave, (813) 777-3437, boydclocks@gmail.com

>Harrison, MAINE, 04040, Harry Hepburn, 828 Edes Falls Rd, 04040, (207) 583-2821

>Saco, MAINE, 04072; Robert Boyd, 60 Shadagee Rd. #24 - 603-801-8292, bobboyd@rlbpab.com

>Scarborough, MAINE, 04074, Scarborough Hollow Clock Works, 700 US Route 1, Ste 104, (207) 730-7288 - scarboroughhollow@maine.rr.com

>Andover, MASS, 01810; Bob Frishman, 53 Poor St., 978-475-5001 – bell-time@comcast.net, www.bell-time.com

>Amesbury, MASS, 01913, Vincent Harrild, 1 River Ct. Suite 219 - (978) 314-8620, harrildvr@greenet.net

>Newton, MASS, 02458, Watertown Watch & Clock, 230 California St, (617) 244-3779, chris@watertownwatchandclock.com

>Swampscott, MASS, 01907, Phillips Clock Shop, 330 Essex St, (781) 593-1333, sales@phillipsclockshop.com, www.phillipsclockshop.com

>Wayland, MASS, 01778, Michael Poisson, 508-655-1958, mljw92@aol.com

>Warren, MICHIGAN, 48093; The Clockworks, 8385 Old 13 Mile Rd, (800) 574-9421, jkuechle@clockworks-inc.com, www.colcokworks-inc.com

>Exeter, NEW HAMPSHIRE, 03833; Barlows Clock Repair, 45 Donna Dr. 603-778-1452

>Hollis, NEW HAMPSHIRE, Russ Greenwood, 25 Louise Dr, 603-881-8309, rgtimeout44@msn.com

>Catskill, NEW YORK, 12411; Franklin Micare, 349 Main St, 518-828-5751, franklinmicare@rocketmail.com

>Little Falls, NEW YORK, 13365; Saving Time, PO BOX 169, savingtime@clockandwatchsite.com, (315) 823-1205 - www.clockandwatchsite.com

>Douglassville, PENNSYLVANIA, 1860 Weavertown Rd, 19518, Merritt's Anitques, (610) 689-9541, info@merritts.com, www.merritts.com

>Gibsonia, PENNSYLVANIA, 15044, Joe Brewer, - 2990 Marie Drive - (724) 443-9038

>Peace Dale, RHODE ISLAND, Old School Antiques, Peter Nunes, 4 Hopkins Ln, (410) 742-2112, peter.nunes@verizon.net

>Manassas, VIRGINIA, 20110; Orsini & Frost, 9071 Center Street, 703-368-0618

Dial Restoration & Repainting

>The Clocksmith, 1531 Bower Ln, Johns Island, SC 29455, (843) 327-0455, bryan@clockrepaircharlestonsc.com, www.clockdialrestorations.com

>The Dial House, 3971 Buchanan Hwy, Dallas, GA 30157, (770) 445-2877, dial_house@juno.com, www.dialhouse.net

Related Restoration Materials/Vendors

>Merritts, Inc., Box 277, Douglasville, PA, 19518, 1-800-345-4101 – www.merritts.com

>Timesavers, Box 12700, Scottsdale, AZ, 85267, 1-800-552-1520 – www.timesavers.com

Hand Painted Tablets

>Lee Davis, 4150 Old Orchard Rd., York, PA 17402, 717-757-7267

>Tom Moberg, 2323 Vandekaar Rd, Owasso, MI 48867 989-723-3112

All listings are made free of charge. We apologize for any error or omission. Please let us know of address changes or poor service from those recommended.



The Clocksmith

fine clock dial restoration

4th Generation since 1889

clockdialrestorations.com



All work is performed by us onsite.

All methods are professional true artisan methods and performed by hand. We will restore true to the original dials design. We ethically repaint dials and do not fabricate.

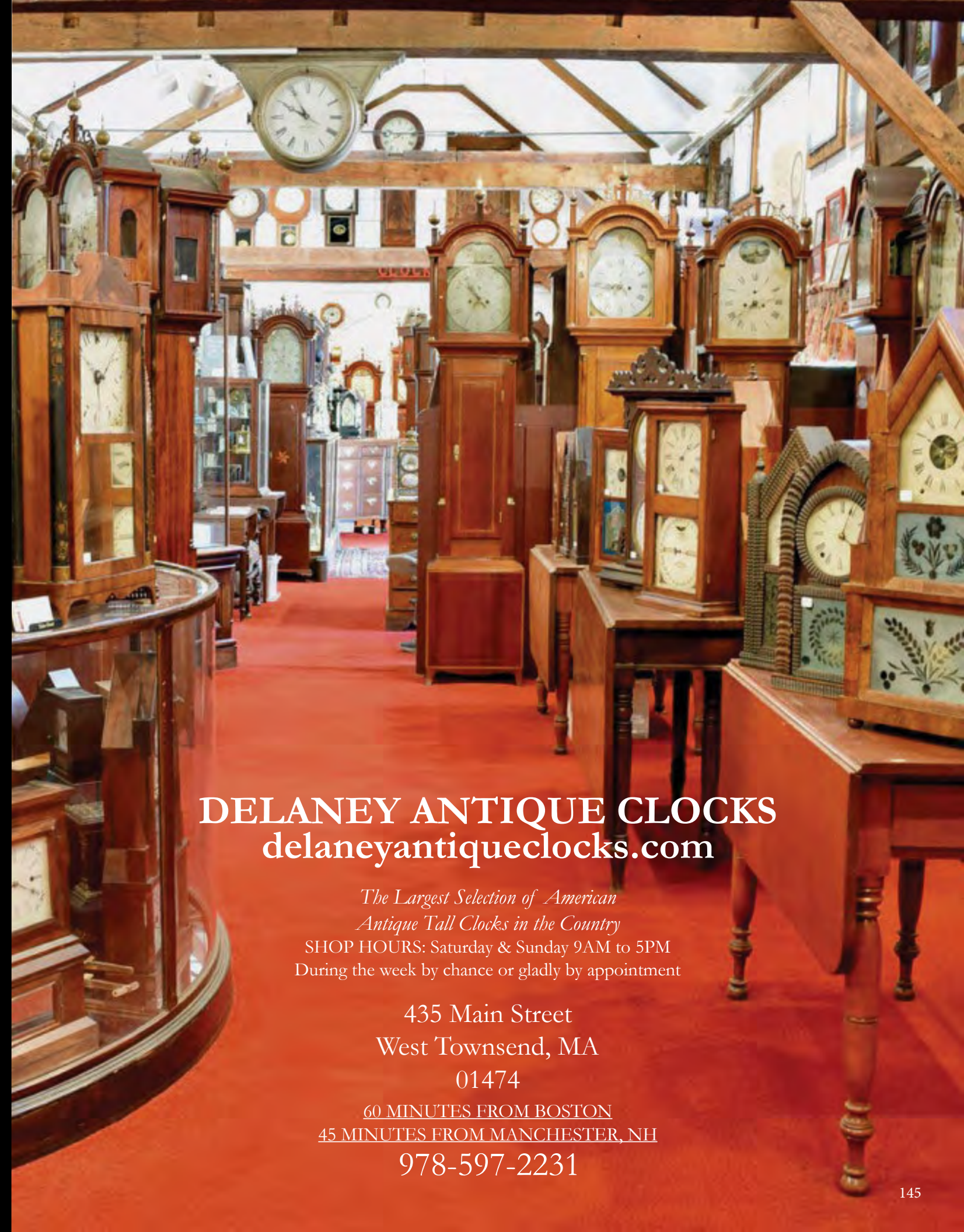
These antique clock dials were restored using 100% museum quality techniques so they won't lose their value.

Our average turn around time is 5-6 weeks.



The Clocksmith, Bryan Smith, 4th Generation

1531 Bower Lane, Johns Island, SC 29455 | 843-327-0455 | Bryan@clockrepaircharlestonsc.com



DELANEY ANTIQUE CLOCKS

delaneyantiqueclocks.com

*The Largest Selection of American
Antique Tall Clocks in the Country*

SHOP HOURS: Saturday & Sunday 9AM to 5PM
During the week by chance or gladly by appointment

435 Main Street
West Townsend, MA
01474

60 MINUTES FROM BOSTON
45 MINUTES FROM MANCHESTER, NH

978-597-2231



Fax: (603) 432-2271
Phone: (603) 432-2237
E-mail: bids@schmitt-horan.com

--This form must be submitted 48 hours prior to the start of the auction--

PLEASE BID ON MY BEHALF, BIDDING AS CHEAPLY AS POSSIBLE, ON THE LOTS LISTED AND DESCRIBED BELOW. THE \$ FIGURE ENTERED IN THE RIGHT COLUMN IS MY MAXIMUM "HAMMER" PRICE, AND I UNDERSTAND THERE IS AN 20% BUYER'S PREMIUM ADDED TO THAT AMOUNT. THERE IS NO SALES TAX IN NH.

Please note: We offer "+1 BIDDING SERVICE". See our website for details.

LOT #	BRIEF DESCRIPTION	\$ BID / +1 (Y/N)
		\$ 1
		\$ 2
		\$ 3
		\$ 4
		\$ 5
		\$ 6
		\$ 7
		\$ 8
		\$ 9
		\$ 10
		\$ 11
		\$ 12
		\$ 13
		\$ 14
		\$ 15
		\$ 16

Additional sheets are acceptable. Upon notification that my bid or bids are successful, I shall promptly remit the balance due. I understand that I will be billed separately by the packing company for shipping.

_____/____/____ Total number of bids _____)
Signature Date

Name _____

Address _____ City _____

State _____ Zip _____ E-mail _____

Telephone: Evening _____ Day _____ Cell _____

All invoices will be mailed or e-mailed two to three days after the auction. Please do not contact us regarding an invoice until at least 72 hours after the auction.

We offer this service as a convenience to our customers, and we cannot be responsible for late mail, failed transmissions, or other failures to execute bids. We are also not responsible for an unreadable FAX written in blue ink. Please use black ink, print clearly and confirm successful transmission by phoning us. All bids are confidential. We urge you to FAX this form as regular mail can prove unreliable. Express or Priority mail are also satisfactory. NH Lic #5060. You may also submit this form by email or phone. For other questions or bids e-mail: bids@schmitt-horan.com or telephone the number listed above.

COPIES OF THIS FORM ARE ACCEPTABLE