



**SCHMITT
HORAN & CO.**

PO Box 31 Candia, NH 03034
sales@schmitt-horan.com
603.432.2237

Online Bidding

bids.schmitt-horan.com
www.liveauctioneers.com
www.invaluable.com
www.bidsquare.com

Rare American and European Watches and Clocks

Saturday, May 2nd 2026

May 2 at 11:00am

Lots 1 - 325 Discovery Sale

In-Person Bidding Only

May 2 at 2:30pm

Lots 326- 621 Live Auction

Absentee, Phone, Online, In-Person Bidding

Public Preview

Saturday, April 25 at 12pm to 4pm

*In conjunction with the New England
NAWCC Regional (April 24 - 25)*

Saturday, May 2 at 8am to 10:45am

Preview Also By Appointment

April 27 to May 1

Candia, New Hampshire

Welcome to Schmitt Horan & Co.'s Spring 2026 live auction event. Lots 1 - 325 are an in-person bidding event only. Lots 326 - 621 will offer all bidding methods including in-person, online, phone and absentee. Lots 326 - 422 are included in this catalog, all other lots can be found online.

Auction Location
**80 Raymond Rd
Candia, NH 03034**

Follow us on social media on **Facebook, Instagram, Twitter and Youtube**. Please visit schmitt-horan.com to view lots not listed in this catalog and / or additional detail images and condition reports not shown in this catalog.

Additional information on food, parking and accommodations can be found on schmitt-horan.com. For more detailed instructions on bidding, please see terms and conditions at the rear of catalog.

We are always seeking fine consignments. Please contact us for a confidential consultation and appraisal. See invitation at rear of the catalog for more information.

Daniel Horan
NH Auctioneer License No. 5060

SUMMARY OF TERMS OF SALE

REGISTRATION Is required prior to the sale for all bidders, including online, internet, phone and absentee.

CONDITION OF LOTS We describe and evaluate each lot to the best of our ability. The condition and authenticity should be confirmed by personal examination. The final decision to bid, and the amount to bid is at the bidder's discretion and liability.

ITEMS PURCHASED Successful bidders must remit payment within 15 days of close of the auction. It is the buyer's responsibility to verify that he / she has received accessories that may be separate when taking possession of their merchandise.

BUYER'S PREMIUM Buyers pay 20% premium on the hammer price. Invaluable, Live Auctioneers and Bid-square bidders pay an additional fee of 8%, as well as the 20% buyer's premium.

PAYMENT Acceptable forms of payment include pre-approved personal checks, cash, Paypal, and all major credit cards: VISA, Mastercard, American Express & Discover. There is an additional 3% processing fee for all credit card and Paypal purchases.

Lot 402

*A very rare mid 19th century
American lyre form skeleton
clock attributed to Hiram Camp*



CONTENTS

- 1 EVENT ANNOUNCEMENTS
- 4 BOOKS & JEWELRY
- 5 WRIST WATCHES
- 18 EUROPEAN POCKET WATCHES
- 27 AMERICAN POCKET WATCHES
- 28 TOURBILLON POCKET WATCHES
- 30 JULES JURGENSEN'S BENCH
- 32 WATCHMAKER'S TOOLS
- 33 DECK WATCH & EUREKA
- 34 CARRIAGE CLOCKS
- 38 FRENCH & MYSTERY CLOCKS
- 40 INVITATION TO CONSIGN
- 41 SKELETON & BRACKET CLOCKS
- 50 ENGLISH & CONTINENTAL CLOCKS
- 52 TALL CLOCKS & REGULATORS
- 59 NAWCC NEW ENGLAND REGIONAL
- 60 AMERICAN CLOCKS
- 74 INDEX
- 75 TERMS AND CONDITIONS
- 76 VENDOR INFORMATION
- 77 BID FORM
- 78 FRISHMAN BOOK ON E. DUFFIELD

BIDDING INCREMENTS

We will make every effort
to use the following increments:

\$0 - \$500: \$25 increments
\$501 - \$1000: \$50 increments
\$1000 and up: Auctioneer's Discretion

Typically...
\$1001 - \$2000: \$100 increments
\$2001 - \$4000: \$200 increments
\$4001 - \$10,000: \$500 increments
\$10,001 and up: \$1000

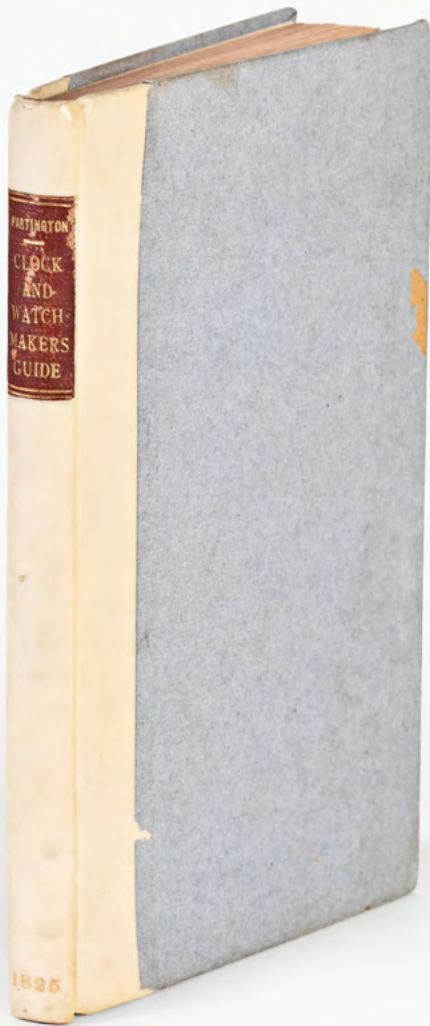
*Lots 326 - 422 are included in this catalog.
Photos and descriptions for lots 1- 325 and
423 - 621 are available online.*

Please see www.schmitt-horan.com.



Lot 529

A mid 19th century clock dial and movement by Charles Fasoldt in a later case



326

C.F. Partington, a rebound copy of "The Clock and Watch Makers Complete Guide", London, 1825, with notes on the practical and historical aspects of the trade, with bookplate of Ted Crom

\$400-\$600

327

John Donald, London, a good late 1960s crown ring, the 18 karat, yellow gold reticulated ring of cylindrical form with 13 diamonds and six sapphires set at the ends of inward facing stalks, with London hallmark, the date letter for 1968, and the maker's "JAD" stamp, size 6 1/2, 9.3g TW

\$1000-\$1500 Circa 1968

328

An interesting 19th century 14 karat gold watch chain with alternating plain and chased small, round, paired beaded links, 15.75in, 27.6g TW

\$1400-\$1600 Circa 19th c





329

Rolex, Geneva, a good late 20th century ref. 16520 Cosmograph "Daytona", 31 jewel, automatic winding, adjusted to 5 positions and temperature, rhodium plated cal.4030 movement with lever escapement and freesprung Micro Stella balance in a stainless steel Oyster case with ref. 78390A Oyster bracelet, baton marker white dial with constant seconds, 12 hour and 60 minute registers at 3, 6, and 9:00 respectively, with polished, tapered baton hands, serial # A462770 (case), 36428 (movement), 40mm, together with the original Rolex boxes, booklets, chronometer certificate and hang tag

Condition: CASE: Very fine scratches on outer surface of case; Bezel with a few minor dings and fine scratches; Bracelet with fine scuffs and scratches. DIAL: Very good. HANDS: A bit dirty and with fine scratches. MOVEMENT PLATES: Scattered, very fine scratches on plate. MOVEMENT FUNCTION: Running order (winds, sets and ticks). COMPLICATION: Functions properly, chronograph hand needs to be repositioned to rest at zero. Outer box good, inner very good, booklets and certificate good, Oyster booklet has a few pages with folded corners

\$25000-\$30000 Circa 1999



330
 Rolex, Geneva, a good mid 20th century ref. 1675 "GMT Master" wrist watch with boxes and papers, 26 jewel, automatic winding, adjusted to 5 positions and temperature, rhodium plated cal. 1570 movement with lever escapement and freesprung balance in a stainless steel case with rotating Pepsi bezel and C&I riveter oyster bracelet marked "7 - 72", baton, dot and dart marker black dial with date aperture at 3:00 and Mercedes hands, serial #1743149, 40mm, together with the original boxes, booklets, chronometer certificate, and hang tags

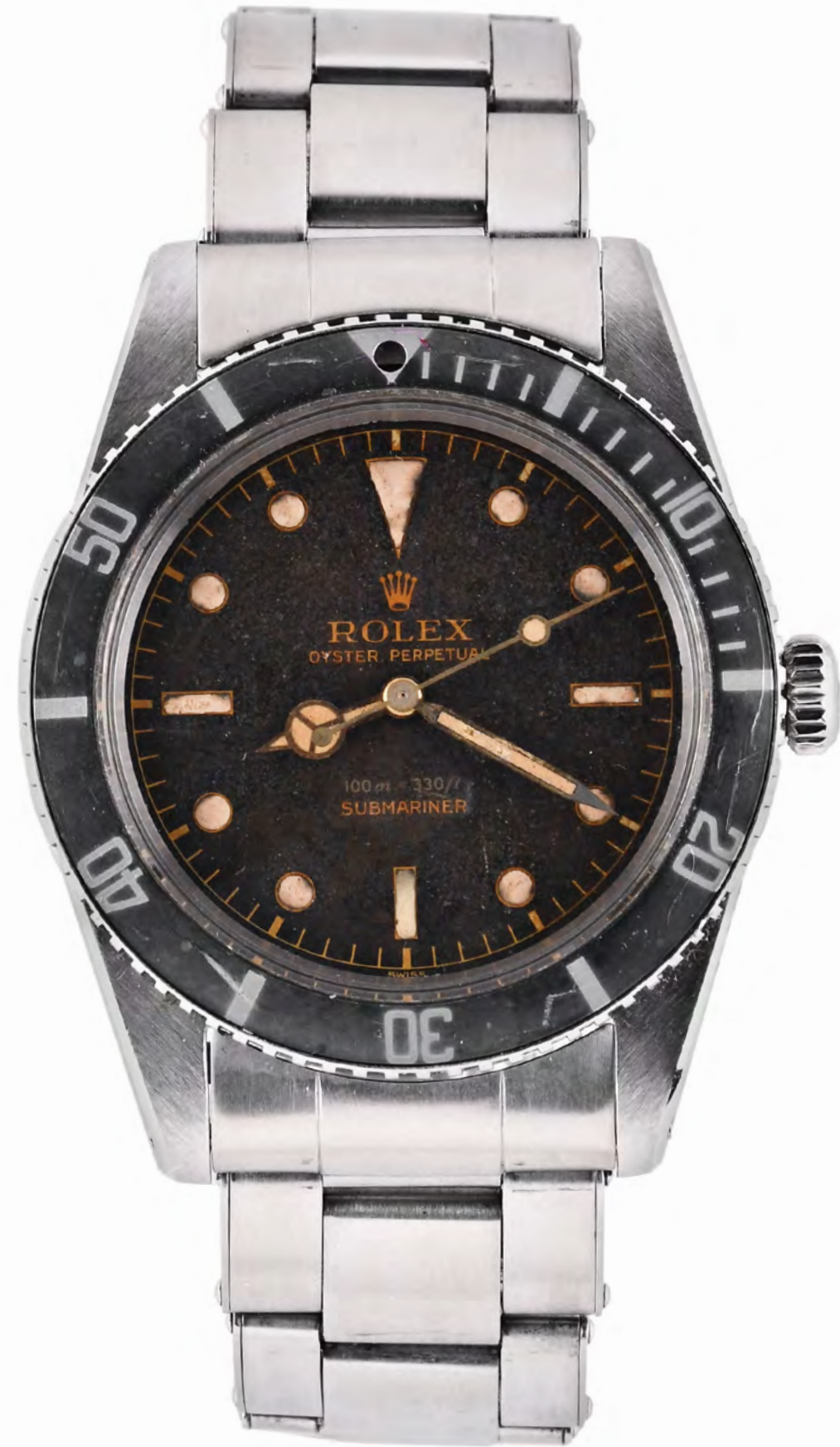
Condition: CASE: Minor dings, scuffs and scratches; Bezel with minor scratches and fading; Ends with significant bracelet wear; Serial number with some later scratch engraving, though Rolex serial number is mostly legible; Case back with localized scratches and dent at edge; Bracelet with very fine scratches and scuffs; Bracelet clasp coronet with some loss of detail from refinishing. DIAL: Very good. HANDS: A bit dirty, otherwise very good. MOVEMENT PLATES: A bit dirty; Scratches from rotor on bottom plate and balance cock foot; Very minor loss to plating on automatic bridge. MOVEMENT FUNCTION: Running order (winds, sets and ticks). Outer box with wear and minor losses; Inner box with splits to covering at hinge; Paperwork good with minor wear and dirt; Tags good.

\$15000-\$20000 Circa 1967

331
 Rolex, Geneva, a good mid 20th century ref. 6536/1 "Submariner" wrist watch, 25 jewel, automatic winding, adjusted to 5 positions and temperature rhodium plated cal. 1030 movement with lever escapement in a stainless steel Oyster case with bidirectional bezel and ref. 7206 Oyster bracelet with 58 ends, the interior of the case back marked "11.56", dot, baton and dart marker black dial with Mercedes hands, serial #155608 (case), N693031 (movement), 37.5mm

Condition: CASE: Tiny dings and very fine scratches; Small cluster of shallow, short gouges and burrs on side of 4:00 lug; Graining on 2:00 lug encroaches on the adjacent, polished chamfer; Bezel insert faded, with minor scratches and lacking pearl at 12:00; Case back with minor scratches from case wrench; Crystal with very fine scratches; Bracelet with very fine scratches. DIAL: Surface with fading. HANDS: Minor losses to plating. MOVEMENT PLATES: Very fine scratches on plate; Dirty. MOVEMENT FUNCTION: Running order (winds, sets and ticks); Low amplitude, needs service.

\$15000-\$20000 Circa 1956 - 57



332

Rolex, Switzerland, a late 20th century Rolex ref. 15038 wrist watch, 27 jewel, automatic winding, adjusted to 5 positions and temperature, rhodium plated cal. 3035 movement with lever escapement and freesprung Micro Stella balance in an 18 karat yellow gold case with diamond set bezel and 18 karat gold ref. 7205 Oyster bracelet with 57 ends, baton marker white dial with date aperture at 3:00 and gold baton hands, serial #9050974 (case), 1438022 (movement), 34mm, 103.1g TW

Condition: CASE: A few minor dings; Fine scratches on outer surface of case; Minor marring from spring bars and spring bar tool; Acrylic crystal with fine scratches; Bracelet with scuffs and scratches; Precious metal content marked; Diamonds tested. DIAL: Restored; Fine scratches. HANDS: Good. MOVEMENT PLATES: A few very fine scratches. MOVEMENT FUNCTION: Running order (winds, sets and ticks); Date advance and quick set functional

\$6000-\$8000 Circa 1986

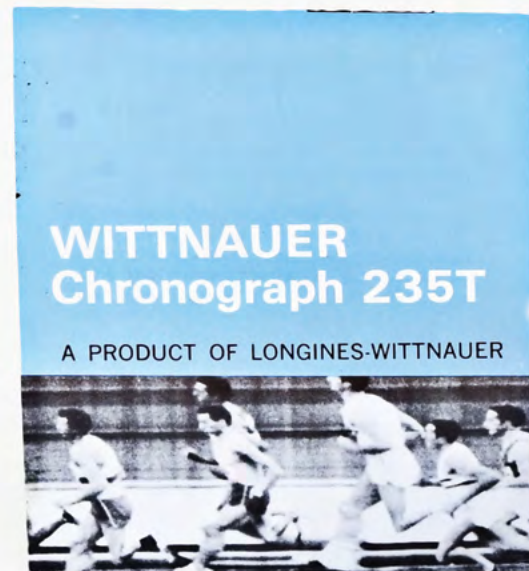
**333**

Audemars Piguet, Switzerland, for Gubelin, Switzerland, a good mid 20th century stainless steel wrist watch, 21 jewel, automatic winding, cotes de Geneve decorated, adjusted to four positions and temperature, rhodium plated cal. P2499 movement with lever escapement, and rotor with 18 karat gold, hobnail decorated weight in a stainless steel case with expansion band, baton marker silver crosshair dial with thin baton hands, serial #61626, 35mm, case, dial and movement signed

Condition: CASE: Very fine scratches on outer surface of case; Dings; Case back with fine scratches and minor marring from case wrench; Acrylic crystal with fine scratches. DIAL: Restored. HANDS: Very good. MOVEMENT PLATES: A few very fine scratches on plate. MOVEMENT FUNCTION: Running order (winds, sets and ticks); Would benefit from service.

\$4000-\$6000 Circa 1955





334 Longines - Wittnauer, Switzerland, a mid 20th century ref. 6002/5 "Chronograph 235T" wrist watch with box and paper, 17 jewel, manual winding, rhodium plated Valjoux cal. 72 movement with lever escapement in a round stainless steel case with expansion band, arabic numeral silver dial with 30 minute and 12 hour registers and constant seconds at 3, 6, and 9:00 respectively, tachymetre scale and blued steel hands, 36mm, together with box and instruction sheet

Condition: CASE: Very fine scratches on outer surface of case; A few tiny dings; Back with minor scuffing from contact with band; Crystal with numerous age related cracks. DIAL: Very good. HANDS: Very good. MOVEMENT PLATES: One fine, short scratch on balance cock, otherwise very good. MOVEMENT FUNCTION: Running order (winds, sets and ticks). COMPLICATION: Functions properly. Box exterior with minor imperfections, lining adjacent to the watch lifting, paper good.

\$1800-\$2500 Circa mid 20th c



335 Nivada, Grenchen, a NOS ref. 85017/4773 "Chronomaster Chronoking" with box and papers, 17 jewel, manual winding, rhodium plated Valjoux cal. 23 movement with lever escapement in a round stainless steel case with rotating bezel and suede strap, baton marker black dial with minute register and constant seconds at 3 and 9:00 respectively, and with white baton hands, 38.5mm, together with it's original box, German language instruction booklet, and service center directory, and plastic hang tag

Condition: CASE: Very good; A few very fine scratches; One small mark on back from case wrench; Acrylic crystal with very fine scratches. DIAL: Excellent. HANDS: Excellent. MOVEMENT PLATES: Excellent. MOVEMENT FUNCTION: MOVEMENT FUNCTION: Running order (winds, sets and ticks); COMPLICATION: Functions properly. Box good, papers with bends and light creases, hang tag good.

\$1600-\$2200 Circa mid 20th c



336

Audemars Piguet, Switzerland, a good mid 20th century dress watch, 17 jewel, manual winding, cotes de Geneve decorated adjusted to 5 positions, temperature and isochronism, rhodium plated ultra thin cal. 2003 movement with lever escapement in an 18 karat yellow gold, textured cushion case with matching 18 karat bracelet, baton marker gold sunburst dial with gold baton hands, serial #69668 (movement), 32014 (case), 31mm, 57.2g TW

\$3000-\$4000 Circa mid 20th c



337

Rolex, Geneva, a mid 20th century ref. 6352 wrist watch, 21 jewel, automatic winding, rhodium plated cal. 775 movement with lever escapement in a stainless steel Oyster case with stainless Speidel "Jubilee" style bracelet with 574 ends, baton marker white dial with polished dauphine hands, serial #30014 (case), 10774 (movement), 36mm

\$2500-\$3500 Circa mid 20th c



338

Omega, Switzerland, a late 20th century ref. 175.0033 "Speedmaster Reduced" wrist chronograph, 46 jewels, automatic winding cal.1140 gilt plate movement with lever escapement in a stainless steel case with gold tachymetre bezel and black leather strap, baton marker black dial with constant seconds, 12 hour and 30 minute registers at 3, 6, and 9:00 respectively, and white baton hands, serial #51663891, 39mm

\$1600-\$2200 Circa late 20th c



339

Omega Watch Co. Switzerland, a late 20th century ref 145.013 "Flightmaster" wrist chronograph, 17 jewel, manual winding gilt plate cal. 910 movement with lever escapement and micrometric regulator in a grained stainless steel case with stainless ref. 1162/172 bracelet, gray dial with white 1/5 seconds chapter ring, 30 minute and 12 hour registers and 24 hour display at 3, 6, and 9:00 respectively, with Flightmaster hands, serial #29136202, 43mm x 52.5mm, with associated boxes

\$1500-\$2000 Circa 1970



340

Benrus Watch Co. Inc., Switzerland, a good mid 20th century "Sky Chief" wrist chronograph, 17 jewel manual winding nickel plate movement with lever escapement in a stainless steel case with mesh and expansion bracelet, luminous arabic numeral dark brown dial with minute and hour registers, and constant seconds, at 3,6 and 9:00 respectively, polished steel luminous hands, 35mm, dial, case, and movement signed

\$1400-\$1800 Circa mid 20th c



341

Heuer, Switzerland, a ref. 1611 wrist chronograph, 17 jewel, manual winding rhodium plated Valjoux 7765 movement with lever escapement in a tonneau shaped stainless steel case with rubber strap and marked "Made in France", baton marker silver dial with date aperture, constant seconds and minute register at 3, 9, and 12:00 respectively, tachymetre bezel, and polished silver baton hands, serial #53913, 38mm

\$1400-\$1800 Circa 1970s



342

Hamilton, Switzerland, a mid 20th century ref. 73623 wrist chronograph with boxes, 17 jewel, manual winding Valjoux cal.7736 movement with lever escapement in a round, stainless steel case with black reptile grain strap, baton marker grained silver dial with black minute and hour registers, and constant seconds at 3, 6 and 9:00 respectively, and polished silver hands, 36mm, with boxes

\$1200-\$1600 Circa 1965



343

Yema, Besancon, a late 20th century Yachtingraf "White Ship" wrist chronograph, 17 jewel, manual winding, rhodium plated Valjoux cal. 7733 movement with lever escapement in a stainless steel case with rotating bezel and stainless jubilee style bracelet, black dial with raised rectangular markers, 15 minute register at 3:00, constant seconds at 9:00, black luminous baton hands, and inner tachymeter bezel, serial #930036, 39mm

\$1200-\$1500 Circa 1970



344

Bremont, Henley on Thames, a ref. S301-ALT1T-2018-S "Felix the Cat" limited edition for members of the Bremont Altitude forum, 25 jewel, automatic winding, damascened rhodium plated cal. SW300-1 movement with lever escapement and micrometric regulator in a stainless steel case with unidirectional rotating bezel and NATO strap, arrow, baton and dot marker black dial with image of Felix running and carrying a round bomb with lit fuse, serial #30/30, 40mm, with Bremont box, cloth bag, large, folding leather pouch with compartment for the watch, owners manual, spring bar tool, and leather strap

\$1000-\$1500 Circa 2018



345

C. Gigandet, Switzerland, for Wakmann, New York, a large, mid 20th century ref. 1315.30.75 wrist chronograph with calendar, 17 jewel, manual winding rhodium plated Valjoux cal. 730 movement with lever escapement in a round, gold plated case, silver sunburst dial with wide baton markers, minute and hour registers and day/ month apertures at 3,6,9, and 12:00 respectively, and with date display at the periphery, gold baton hands, 39mm

\$1000-\$1500 Circa mid 20th c



346

International Watch Co., Schaffhausen, an early 21st century ref. 3533 "Portofino" wrist watch, 23 jewel, automatic winding, damascened, adjusted to 5 positions rhodium plated cal. C.30110 movement with lever escapement and micrometric regulator in a round stainless steel case with IWC black reptile strap and clasp, baton marker white dial with date aperture at 3:00 and polished silver baton hands, serial #2870620 (movement), 3028983 (case) 38mm

\$1000-\$1500 Circa early 21st c



347

Bell & Ross / Sinn, Frankfurt am Main, an early 21st century model 103St wrist chronograph, 25 jewel, automatic winding rhodium plated ETA cal. 7750 movement with lever escapement and micrometric regulator in a stainless steel case with rotating bezel and leather strap, baton marker reverse panda dial with date aperture at 3:00, hour register, constant seconds and minute register at 6,9, and 12:00 respectively, and white luminous syringe hands, serial #1035058, 41mm, with boxes

\$800-\$1200 Circa early 21st c

348

Jules Jurgensen, Copenhagen, a good mid 19th century quarter repeating pocket chronometer, 32 jewels, stem wind and pin set, cotes de Geneve decorated nickel bar movement with pivoted detent escapement, cut bimetallic balance with gold screws, gold jewel settings, gold escape wheel, wolf's tooth winding and whiplash micrometric regulator in an 18 karat, yellow gold, engine turned hunting case with Jurgensen lips, now converted to open face, with maker's details engraved on gold cuvette and roman numeral, single sunk white enamel dial, plum colored steel Breguet style hands, serial #8961, 51mm, 120.4g TW

Condition: CASE: Two small, shallow dents, band, back; Minor dings; Fine scratches on outer surface of case; Fine scratches on inner surface of case; Engine turning nearly worn smooth; Bow and crown with wear; Precious metal content marked. DIAL: Minor fine scratches, minor fading to figures on seconds bit, otherwise very good. HANDS: Speck of oxide on minute, otherwise very good. MOVEMENT PLATES: Minor marks and scratches on plate; Crown wheel with scattered specks of oxide; Repeat barrel bridge with fine scratches and polish; Gong base with speck of oxide; Some screw slots with minor marring. MOVEMENT FUNCTION: Running order (winds, sets and ticks) ; Balance rim slightly bent. COMPLICATION FUNCTION: Functions properly. The pin for the setting mechanism originally had a locking stud, attached to the inside of the front cover, which prevented movement of the pin unless the front cover was open. The stud was removed when the conversion to open face was carried out, as it was no longer needed. This safety feature predates Jurgensen's bow setting, and is not often seen. The tab for mounting the locking stud remains attached to the inside of the front bezel, and so the locking function could be restored by a competent workman.

\$6000-\$8000 Circa 1860



349

Jules Jurgensen, Copenhagen, a late 19th century gold pocket watch, 21 jewel, stem wind and with Jurgensen's bow setting, damascened nickel plate movement with lever escapement, cut bimetallic balance with gold screws, and gold endstone settings in an 18 karat rose gold, hinged back and bezel open face case with Jurgensen lips, roman numeral single sunk white enamel dial with plum colored steel Breguet style hands, serial #11533, 55mm, 147.6g TW, case, dial and movement signed

Condition: CASE: Fine scratches on outer surface of case; Very fine scratches on cuvette; Case hinges loose; Crown shell worn through; Precious metal content marked. DIAL: Small filled loss at edge, 2:30, otherwise very good. HANDS: Minor oxide, minute. MOVEMENT PLATES: Dirty; Very fine scratches on plate; Damascening very faint; A few screws with specks of oxide; Significant loss to paint in engraving. MOVEMENT FUNCTION: Running order (winds, sets and ticks).

\$5000-\$6000 Circa 1875

350

S. Smith & Son, London, a late 19th century, minute repeating split seconds chronograph pocket watch, 21+ jewel, stem wind and pin set gilt plate movement with lever escapement, cut bimetallic balance and gold jewel settings in an 18 karat yellow gold hunting case, the front with engraved family crest and banner reading "in foro conscientiae" and back with engraved cipher, roman numeral double sunk white enamel dial with 30 minute register and constant seconds at 12 and 6:00 respectively, blued steel spade and whip hands, serial #01920, 54mm, 157.7g TW, together with its original leather covered, silk and velvet lined box

Condition: CASE: Fine scratches on outer surface of case; Cuvette with dent and fine scratches; Cuvette snap worn and with small notch; Engraving with minor wear; Precious metal content marked. DIAL: Short scratch at edge, 3:00, otherwise very good. HANDS: Good. MOVEMENT PLATES: Very fine scratches on plate; Localized haze; Case screws with losses to blue; Regulator and balance stud with very fine scratches. MOVEMENT FUNCTION: Running order (winds, sets and ticks). COMPLICATION: Repeating and chronograph function properly; Minute gong sounds as if it is contacting the case or movement, will need adjustment. Box with minor scuffs and wear.

\$5000-\$8000 Circa late 19th c



351

George Savage, Huddersfield, a very rare eight day pocket watch with remontoire, 4 jewel, key wind and set gilt plate movement with cylinder escapement, steel balance, and six wheel train with large barrel, the top plate marked "George Savage Patent Huddersfield No. 48", contained in a sterling silver consular case with London hallmark and date letter for the year 1807, arabic numeral white enamel dial with chapter ring at 6:00 below a polychrome rendering of the U.K. Coat of Arms, with gold hands and marked "Patent, eight days", serial #48, 59mm

Condition: CASE: Small dent, back, 7:00; Dings; Very fine scratches on outer surface of case; Crystal replaced; Precious metal content marked. DIAL: Hairlines radiating from hinge; Repaired loss at right. HANDS: Minute replaced. MOVEMENT PLATES: Fine scratches on plate; Balance stud foot with abrasion and loss to blue; Regulator with fine scratches; Top plate with three small empty holes at signature; Balance cock with small soft solder repair. MOVEMENT FUNCTION: Winds, sets and ticks; Would benefit from service and adjustment.

\$4000-\$6000 Circa 1807



352

Wm. Cooper & Co., Liverpool, an interesting mid 19th century pocket watch with engraving of Daniel Webster, 16 - 17 jewel, key wind and set gilt plate movement with lever escapement, gold balance with diamond endstone, and glazed aperture in the balance cock, in a 14 karat yellow gold hunting case with an engraved portrait of Daniel Webster at the back, the front with engraved American eagle with banner stating " Union and the Constitution", each image surrounded by floral and foliate engraving, roman numeral white enamel dial with blued steel Breguet style hands, serial #10710, 55mm, 125.6g TW

Condition: CASE: Very fine scratches on outer surface of case; Very fine scratches on inner surface of case; Dome with localized case knife marks; Engraving with moderate wear; Front cover with minor gap at band, left of pendant; Bow with brassing; Precious metal content tested. DIAL: Faint hairlines at edge, 9 - 10:00; Tiny flakes at center of seconds bit. HANDS: Minor bends; Lacking seconds hand. MOVEMENT PLATES: Fine marks and scratches on plate; Barrel bridge and balance cock screws replaced; Bright work with fine scratches; Plates dull and a bit dark; One dust cap stud broken. MOVEMENT FUNCTION: Not running, will run with pressure on train; Fusee chain broken.

\$2500-\$3000
Circa mid 19th c



353

G.H. & C. Gowland, Sunderland, an unusual mid 19th century gold pocket watch, 14 jewel, key wind and set gilt plate movement with duplex escapement and cut bimetallic balance with vibrating stud and diamond endstone, 18 karat yellow gold, hinged back and bezel, engine turned and engraved open face case, signed roman numeral, single sunk white enamel dial with blued steel fleur de lis hands, serial #1270, 48mm, 95.1g TW

Condition: CASE: Shallow dent; Dings; Very fine scratches on outer surface of case; Very fine scratches on inner surface of case; Engine turning nearly worn smooth; Bow loose; Precious metal content marked. DIAL: Hairlines, center to top of seconds bit, and at edge, 3:30. HANDS: Minute short. MOVEMENT PLATES: Very fine scratches on plate; Balance stud foot with minor oxide; Oily, dirty. MOVEMENT FUNCTION: Not running, balance lacks locking roller, good staff.

\$3500-\$4500 Circa mid 19th c

354

R. Roskell, Liverpool, an early 19th century gold pocket watch, 6 jewel, key wind and set gilt plate movement with rack lever escapement and steel balance with diamond endstone in an 18 karat yellow gold pair case, roman numeral white enamel dial with gold spade and poker hands, serial #6918, 56mm, 160.5g TW

\$4000-\$5000 Circa early 19th c



355

Switzerland, for John Bennett, London, a late 19th century gold quarter repeating pocket chronograph, 16 jewel, stem wind and lever set gilt plate movement with lever escapement and cut bimetallic balance in an 18 karat gold hunting case, roman numeral single sunk white enamel dial with 1/5 seconds at the periphery and blued steel hands, 52mm, 114.5g TW

\$3000-\$4000 Circa late 19th c



356

Nicolet, Switzerland, a good early 20th century minute repeating pocket watch owned by Grenville Clark Jr., 16 - 17 jewel, stem wind and set cotes de Geneve decorated nickel plate movement with lever escapement, cut bimetallic balance with gold screws, and whiplash micrometric regulator in an 18 karat yellow gold, hinged back and bezel open face case, with presentation engraved on gold cuvette "Grenville Clark Jr. from his Grandfather Nov. 20th 1918" and also engraved "No. 23902 Nicolet", arabic numeral, outer red 5-minute markers, double sunk white enamel dial with plum colored steel spade and whip hands, serial #23902, 47mm, 82g TW

\$2500-\$3500 Circa early 20th c



357

Charles Haley, London, a good 19th century pocket chronometer, 9 jewel, key wind and set gilt plate movement with Petto's cross detent escapement, three arm, cut bimetallic balance with blued steel mean time screws, trapezoidal compensation weights and rim with scribed lines to aid in their placement, sterling silver, hinged back and bezel open face case with London hallmark and date letter for the year 1852, roman numeral white enamel dial with gold spade and poker hands, serial #LG/2032, 52.5mm

\$2000-\$3000 Circa 1815

358

Barrauds, London, a mid 19th century silver pocket chronometer, 10 jewel, key wind and set gilt plate movement with Earnshaw's spring detent escapement and Pennington type cut bimetallic balance with helical balance spring in a sterling silver, hinged back and bezel open face case with London hallmark and date letter for the year 1860, roman numeral white enamel dial with blued steel spade and poker hands and signed "Barraud's London 830", serial #830, 54.5mm

\$1000-\$1500 Circa 1815

359

Edward Prior, London, a quadruple cased verge fusee pocket watch for the Turkish market, key wind and set, gilt full plate movement with pierced and engraved balance cock and slide plate and crested Egyptian pillars in silver and sterling silver quadruple cases, variously ornamented with pique pins, underpainted horn, engraving, and embossed ornament, the innermost cases with London hallmark and date letter for the year 1842, Turkish numeral white enamel dial with blued steel beetle and poker hands, serial #58466, 72mm

\$1000-\$1500 Circa 1842





360

American Waltham Watch Co., Waltham, Mass., a late 19th century model 1888 pocket watch, 16 size, 15 jewel, stem wind and set damascened nickel plate movement with lever escapement, cut bimetallic balance, and Fogg micrometric regulator in a 14 karat yellow gold, hinged back and bezel open face case, arabic numeral, outer blue 5-minute markers, single sunk O'hara multicolor enamel dial with blued steel Louis XV hands, serial #4735189, 106.3g TW

Condition: CASE: Dents; Fine scratches on outer surface of case; Fine scratches on inner surface of case; Crystal with scratches; Crown shell worn through; Precious metal content marked. DIAL: Very good. HANDS: Very good. MOVEMENT PLATES: Winding wheels and regulator with a few specks of oxide; Balance cock screw replaced; Specks of dirt. MOVEMENT FUNCTION: Running order (winds, sets and ticks); Low amplitude, needs service.

\$2200-\$2800 Circa 1890



361

Charles Jacot, La Chaux de Fonds, a late 19th century pocket watch with one minute tourbillon, 11 jewel, key wind and set gilt plate fusee movement with one minute tourbillon having a three arm carriage, pivoted detent escapement and cut bimetallic balance with gold screws, gold plated nickel display case with winding key in the pendant, and signed, roman numeral single sunk white enamel dial with plum colored steel fleur de lys hands, serial #2277, 56mm

Condition: CASE: Very fine scratches on outer surface of case; Crystals with fine scratches. DIAL: Cracks, from center to 12 - 3:00. HANDS: Minor oxide, tip of minute. MOVEMENT PLATES: Fine scratches and minor scuffs on plate; Key guards with a few specks of oxide; Lower portion of tourbillon carriage with a few small spots of oxide. MOVEMENT FUNCTION: Running order (winds, sets and ticks).

\$3000-\$5000 Circa 1875



362

Switzerland, a good late 19th century pocket watch movement with one minute tourbillon, 11 jewel, key wind and set, damascened nickel plate fusee movement with gold wheel train and one minute tourbillon having a freesprung, cut bimetallic balance with gold screws, helical balance spring, and pivoted detent escapement, with roman numeral white enamel dial and blued steel Breguet style hands, 47mm

Condition: movement with fine scratches and minor spotting, a few screws with specks of oxide, dial with small loss to enamel at 9:00, lacking seconds hand.

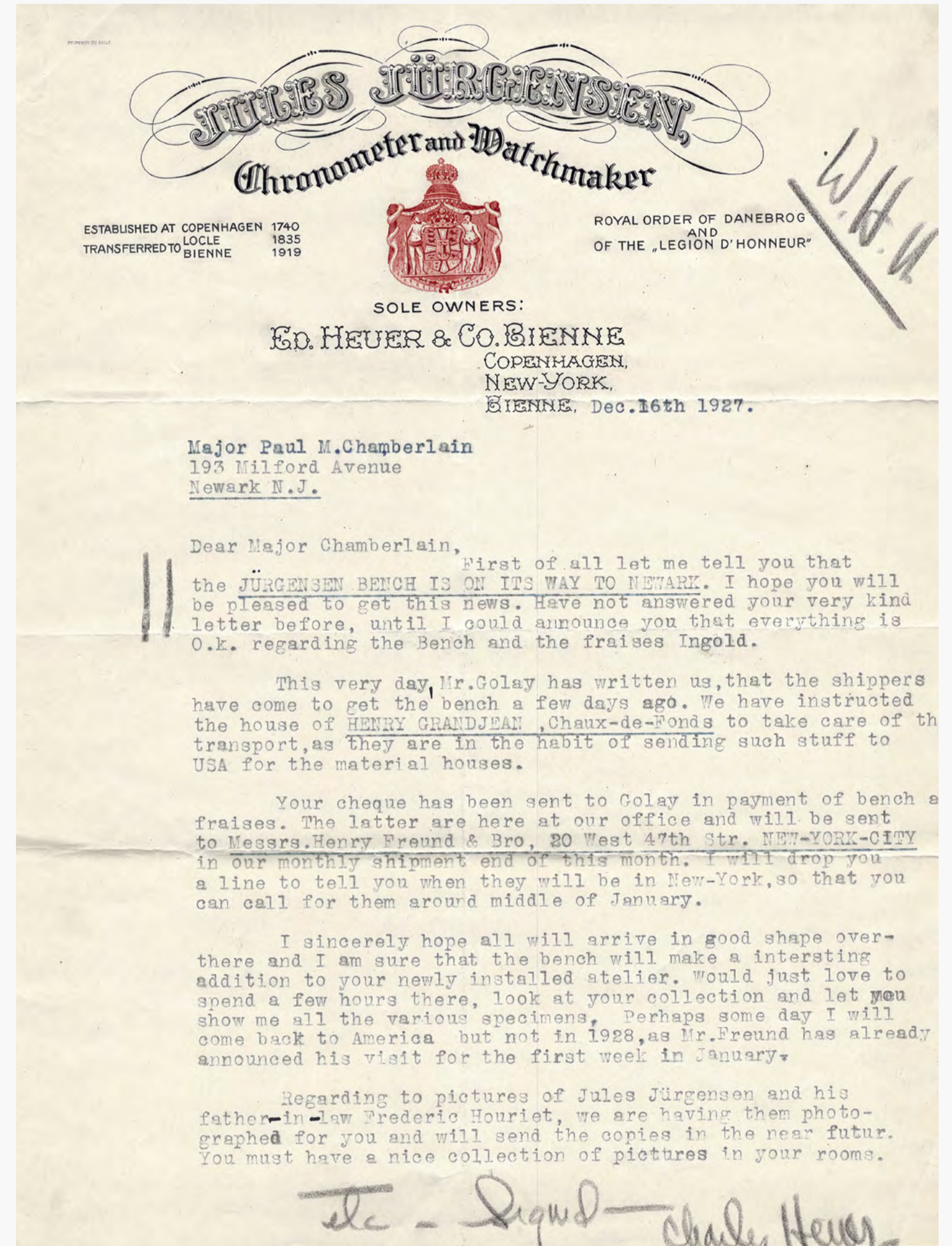
\$3000-\$5000 Circa 1875



363
Switzerland, a mid 19th century watchmakers bench used by Jules Jurgensen and his son Jules II, of walnut and spruce construction, and on short, tapered feet, each end with nine graduated drawers having matched figured walnut veneers, brass pulls and hinged wooden locking bars, the center with three drawers and central compartment for brushes and chalk and recess for the seated watchmaker, and thick walnut top with heavy cock beaded edge, and accompanied by documents on Jurgensen letterhead confirming the sale of the bench to Paul Chamberlain, and a letter from Margaret Chamberlain to William Nichols following his acquisition of the bench from the Chamberlain collection. Also included is an engraved brass plaque with Jurgensen in script, possibly from the Jurgensen atelier door.

Condition: fading from UV exposure, top with marks and staining, bead surrounding top with dents and dings, minor losses to veneer, feet with minor splits and chipping, left side locking bar lacking escutcheon, escutcheons and pulls on center drawers replaced, lacking rail below bottom drawer on right side.

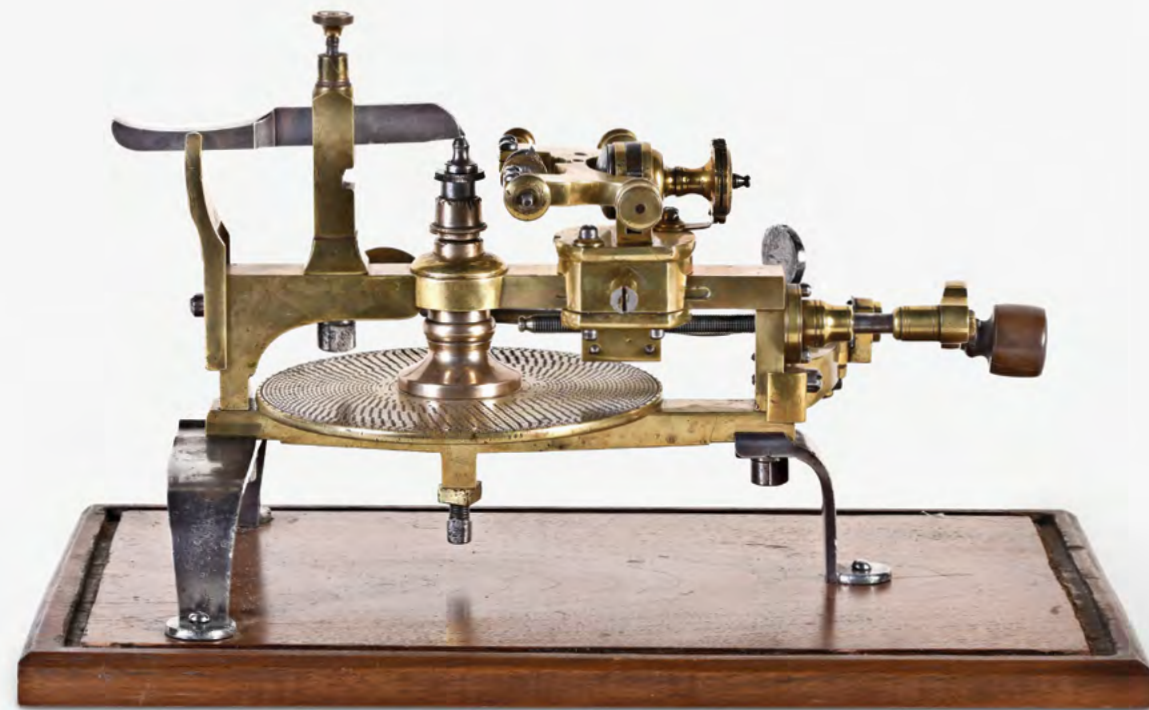
\$3000-\$5000 Circa mid 19th c 34.75in x 49.25in x 17.75in





364
Ballou & Whitcomb, Boston, a very rare late 19th century watchmakers lathe with accessories, the lathe with 11 3/4 inch bed, 2 3/8 in. center height, T rest, plain bearing headstock accepting 8mm collets, an additional plain bearing headstock with integral faceplate, plain tailstock, jewelers tailstock, slide rest, and wig wag polisher

\$1000-\$1500 Circa 1873



365
Switzerland, a 19th century clock or watch makers wheel cutting engine, of brass and steel construction, the dividing plate with holes from 9 to 365

\$1000-\$1500 Circa 19th c 9.5in x 10.25in x 16.5in

366

Ulysse Nardin, Le Locle, for August Ericsson, St. Petersburg, a large late 19th century pocket chronometer, 16 jewel, stem wind and pin set gilt plate movement with Earnshaw's spring detent escapement and cut, bimetallic Guillaume balance with gold screws, .900 silver, hinged back and bezel open face case with signed cuvette, signed, roman numeral single sunk white enamel dial with blued steel spade and poker hands, Nardin serial #13805, Ericsson serial #1548, 58.5mm

\$1200-\$1500 Circa late 19th c



367

Eureka Clock Co. Ltd., London, an early 20th century "1000 Day" five glass electric mantel clock, mahogany case with rectangular base on integral, cut out feet, and mahogany framed dome with beveled glasses to the sides and top, roman numeral white enamel dial with cast brass bezel and blued steel spade hands, and short movement with large, electromagnetically impulsive bimetallic balance, the bearing housings with three balls, and the batteries concealed within the base, serial #3734

\$1300-\$1600 Circa 1910 10.5in x 8.25in x 7in





368
France, for Marcus & Co., New York, a miniature minute repeating carriage clock, the gilt anglais style case with folding handle and pusher for repeating at top, the sides with signed, oval reverse painted portraits of young women, and the bottom with slide concealing the winding, setting and regulation, arabic numeral white enamel dial with gold Louis XV hands, and eight day movement with lever escapement and repeating the last hour, quarter and minute on two gongs

\$3000-\$4000 Circa 1890 3.875in x 2.25in x 1.75in



369
Drocourt, Paris, for Henry Capt, Geneva, a good hour repeating carriage clock with enamel panels and auxiliary base, the gilt, engraved gorge case with three beveled glasses and polychrome enamel panels, the left side with an image of Psyche emptying an urn of water, the right with a young woman holding a sundial, each with gilt, foliate border and on a pink ground, roman numeral porcelain dial with floral and foliate spandrels, trophy at the center with tambourine, staff and roses, and subsidiary alarm chapter flanked by figures of Venus and Cupid, with border and ground matching the side panels, resting on a separate molded and engraved gilt base with siren feet, eight day three train movement with lever platform, striking the hour and half hour on a gong, and repeating the last hour on demand, the back plate signed "Henri Capt Geneve", and with Drocourt mark, serial #11237

\$2500-\$3000 Circa 1875 8.75in x 5in x 4.625in



370
France, a good late 19th century quarter striking carriage clock with calendar, anglais case variant with five beveled glasses, silvered bamboo columns, and silvering to the fluted bands at top and base as well as the center section of the handle, roman numeral white enamel dial with concentric pale blue bellflower ornament, blued steel distaff hands, and subsidiary chapters for the alarm, day and date functions, eight day, three train movement with lever platform, striking grand or petit sonnerie quarters, and repeating the last hour and quarter on demand, with strike function lever beneath the base

\$2000-\$2500 Circa late 19th c 7.625in x 4in x 3.625in



371
France, for M.S. Smith, Detroit, a very attractive late 19th century carriage clock, gilt anglais case with colorful floral and foliate ornament executed in champleve enamel on a turquoise ground, signed roman numeral, single sunk enamel dial with pale green ground and blued steel distaff hands, subsidiary alarm chapter, and champleve mask, eight day three train movement with lever platform, striking the hour and half hour on gongs, and repeating the last hour on demand

\$1700-\$2200 Circa late 19th c 8in x 4in x 3.5in



372
Drocourt, Paris, for Henry Capt, Geneva, a very decorative gorge cased hour repeating carriage clock with polychrome porcelain panels, the gilt, engraved case with beveled glasses to the front, top, and back, the sides with porcelain panels featuring young women, one reading a letter, the other on a balcony, the scenes with gilt borders and framed in cobalt blue, roman numeral porcelain dial with floral ornament and butterfly at center, blued steel Breguet style hands, subsidiary alarm chapter with flanking vignettes featuring young women, all having gilt borders on cobalt as on the sides, eight day, three train movement striking the hours and half hour on a gong and repeating the last hour on demand, the back plate with Drocourt mark

\$1500-\$2000 Circa 1875 7in x 3.75in x 3.25in



373
France, a good late 19th century quarter striking carriage clock, the gilt architectural case with five beveled glasses, stepped, molded base, fluted columns with Corinthian capitals supporting a pitched pediment with bead and dentil moldings, and foliate ornament in the tympanum, surmounted by a molded acroter with reeded handle, white enamel dial with blue roman numerals, gold star half hour markers, gold arabic five minute markers, blued steel Breguet style hands, and subsidiary alarm dial, eight day, three train movement with lever platform, striking grand or petit sonnerie on gongs, and repeating the last hour and quarter on demand, with lever for strike mode under the base

\$1500-\$2000 Circa late 19th c 8.5in x 4.5in x 4in



374
Margaine, Paris, for Emanuel, Paris and Portsea, a good late 19th century repeating carriage clock, the gilt gorge case with beveled glasses at the top, front and back, the sides with polychrome enamel portraits, at the right a young woman in a landscape, with basket of flowers, the left side with a young man in a garden landscape, each image with gilt frame with tiny turquoise colored beads, and outer pink border, the polychrome enamel dial similarly ornamented and framed, with landscape and figures at the bottom, signed, roman numeral chapter ring with love themed trophy at the center and blued steel Breguet style hands, eight day two train movement with lever platform, striking the hour and half hour on a gong, and repeating the last hour on demand, the back plate with Margaine's mark, together with it's textured red morocco covered outer case

\$1500-\$2000 Circa late 19th c 7in x 4in x 3.5in



375
France, a good late 19th century quarter striking carriage clock, the brass anglais variant case with five beveled glasses, fluted columns, and reeded handle, black enamel dial with gilt ornament and faux white enamel cartouches with red roman numerals, polished distaff hands, matching subsidiary alarm dial, and matte gilt mask, eight day, three train movement with lever platform, striking grand or petit sonnerie on gongs, and repeating the last hour and quarter on demand, with lever for strike mode under the base

\$1000-\$1500 Circa late 19th c 7.75in x 4.25in x 3.75in



376

Andre Romain Guilmet, Paris, an unusual crystal regulator with mercury torsion pendulum having helical spring with crank and stirrup escapement, polished brass case with rounded corners, cavetto molded base and cornice, and four beveled glasses, Roman numeral white enamel dial with outer arabic five minute markers and gilt fleur de lis hands, two train pendule de Paris movement with Guilmet's mark, pendulum with cylindrical cage containing three mercury vials, and three polished steel columns with turned brass ornaments, finials and drops, arranged symmetrically around a polished helical spring, suspended from a bimetallic rod concealing a torsion suspension spring, providing a stable connection and support between the rod and bob

\$3000-\$5000 Circa 1890 14.5in x 8.25in x 6.25in



377

Andre Romain Guilmet, Paris, a bronze and black marble mystery clock, the case with molded base and paw feet with scroll and honeysuckle returns, the front with incised line ornament highlighted in gold, the sides with decorative lion mask handles, and surmounted by a figure of a young woman in a bronze tone finish, her left hand with cornucopia, her right hand held aloft, and suspending the pendulum with thick, brass rimmed glass bob, impulsed through the nearly imperceptible movement of the bronze base on which she stands, roman numeral black marble dial with gilt spade hands, eight day, two train time and strike movement with crank and stirrup escapement, the back plate with Guilmet's mark and numbered 1973

\$2500-\$3500 Circa 1890 24in x 11in x 9in



378

Bechot, Paris, a good early 19th century portico clock with oscillating movement, the mahogany veneered case with turned feet and altar form base with palmette ornamented molding and foliate gilt bronze mount supporting four columns with gilt bases and capitals, and top with projecting cornice above a frieze with gilt bronze mount with flowers and anthemion, bimetallic gridiron pendulum with knife edge suspension, the bob with arabic numeral engine turned dial with acanthus surround, blued steel Breguet style hands, and signed, eight day, two train pendule de Paris movement with pinwheel escapement and striking the hour and half hour on a bell

\$1800-\$2400 Circa 1825 21in x 10.75in x 5.75in



379

France, a large late 19th century figural swinging clock, the round, molded base on a griotte marble socle and with plaque engraved "La Science Par Aug. Moreau " and surmounted by a spelter, standing female figure with multi color patinated finish, a book at her feet, her left hand on a globe and her right held aloft and supporting the swinging clock, the compound pendulum with large sphere at the top mounted with a gilt bowknot, roman numerals and Louis XV hands, with faux gridiron, and spherical bob, and eight day timepiece movement

\$1400-\$1800 Circa late 19th c 38in x 10.5in x 14in

SCHMITT HORAN & CO.

Seeking Fine Consignments



Contact Us for a
Free and Confidential
Appraisal

A fine late 17th century
ebonized quarter repeating
table clock by
Simon DeCharmes

Sold \$19,200
November 1, 2025



380
Evans, Handsworth, an unusual mid 19th century skeleton clock, the eight day, two train fusee movement with scroll frames, recoil escapement, Evans compensated pendulum with round wooden rod and cylindrical pewter bob, wheel work with well executed six spoke crossings, and rack striking on a large gong, sounding the half hour in passing on a bell, and front plate signed "J.T. Barry Cardiff", roman numeral, gilt electroformed dial and ornament with ivy vine, leaves, and flowers, blued steel trefoil hands, with oval, velvet lined mahogany base and conforming dome

Condition: dirty, oily, frames with minor tarnish, dial with minor losses to numerals, electroformed ornament with repaired break at lower right, hour hammer lacking leather, gong with oxide, base and dome good

\$3000-\$4000 Circa 1865 26in x 17.5in x 10in



381
 France, a good mid 19th century bronze turret form skeleton clock, rectangular case with molded base and cornice, the moldings and feet gilded, the balance in a red patinated finish, roman numeral, engine turned silvered dial with gilt Breguet style hands, and surmounted by a horizontal turret clock style movement, the plates supported at the corners by four columns and secured by large polished steel screws with knurled, flat knobs, the movement of 2 - 4 week duration and with jeweled dead beat escapement, with gridiron pendulum having a heavy brass bob and crutch with beat adjustment, and driving motion work and striking on a bell concealed within the case, with glass dome, height measurement is without dome

Condition: case good overall, with some minor, localized blemishes to finish, outer corners of front feet chamfered, movement and columns with areas of minor discoloration and spotting, escapement oily, dial restored, pendulum bob with faint spotting, running and striking, dome a later addition

\$2500-\$3500 Circa 1840 16in x 12.5in x 6.25in



382
 Evans, Handsworth, a good mid 19th century skeleton clock, the fretted gothic frames with foils, arches, crockets and other style appropriate ornament, and plaque marked "Nunn Hertford" below the silvered dial with roman numerals on shield shaped reserves and blued steel trefoil hands, eight day, two train fusee movement having wheel work with well executed six spoke crossings and screwed to their collets, lever escapement with vertical balance at top of front frame, and rack striking on a gong, resting on a white marble slab and an associated macassar ebony veneered rectangular base with rounded corners and conforming glass dome

Condition: frames with minor staining and verdigris, front frame with repaired break just to the right of the time barrel, rear frame with small repair at base, hour wheel bent, dial with minor tarnish, hands with losses to blue, hour hand with minor bend, movement dirty, running and striking, marble with a few minor chips, base with veneer loss at front and back, dome a bit large for base. See Derek Roberts "British Skeleton Clocks", page 148, image 3/62, for a photo of this model, but striking on a bell and with different dial.

\$2000-\$3000
 Circa mid 19th c. 21.5in x 12in x 7in

383

J. Eshelby, 5 Eden Quay, Dublin, an unusual Victorian skeleton time-piece, fusee movement with gilt, fretted frames, six pillars, pivoted detent escapement, and bimetallic half seconds pendulum, the bob with French clock clicks retaining a pin at the center, signed, roman numeral silvered dial with scalloped edge, open center, large seconds bit at 6:00 and blued steel hands, all supported by four columns on round plinths, and on a round, ebonized base with conforming glass dome, serial #51383

Condition: good overall, dial with minor bends, hands replaced, columns with minor verdigris at plinths, screw head inside back plate in contact with barrel, hour wheel with spots of verdigris, pendulum components with minor oxide and staining, base with losses to ebonized surface, dome replaced, does not fit groove in base, running

\$2000-\$3000

Circa 1885 17.5in x 10.25in x 10in



384

Attributed to James Edwards, Stourbridge, a good mid 19th century skeleton clock, the eight day fusee movement with scroll frames, turned baluster form pillars, wheel work with four spoke crossings, skeletonized snail, horizontal lever platform escapement with heavy, cut bimetallic balance, and rack striking on a large gong, roman numeral silvered dial with brass maltese hands, all resting on a pair of molded, rectangular brass plinths, and on an oval, rosewood veneered base with floral marquetry and conforming glass dome

Condition: scattered spotting, spot of verdigris on front frame, fly with repair, dial with staining and minor corrosion between 2 and 3:00, gong with oxide, running and striking, base with minor veneer lifting and lacking banding at bottom, clock a bit loose on base, washers needed

\$1800-\$2400 *Circa 1860 18.5in x 13.5in x 8in*





385

England, a very unusual mid 19th century skeleton clock, the eight day, two train movement with squat scroll frames and tall brass trumpet feet, rack striking, recoil escapement, six spoke crossings and bell mounted on a decoratively turned steel support, roman numeral skeletonized silvered dial with blued steel hands, on a later oval wooden base with conforming dome

\$1400-\$1800

Circa mid - late 19th c 16.25in x 14in x 8.5in



386

Wm. McFerran, Manchester, an interesting mid 19th century skeleton clock, the eight day fusee movement with fretted lancet arch frames on unusual shaped feet, knopped pillars secured with knurled nuts, recoil escapement, wheel work with well executed six spoke crossings, fusee with unconventional stop work, pendulum with heavy brass bob and square steel pendulum rod, and passing strike on a bell at the top, roman numeral silvered dial signed below 6:00 and with blued steel hands, resting on an oval white marble base with compressed ball feet and conforming glass dome

\$800-\$1200

Circa 1850 21.5in x 12.5in x 7.5in

Trade card illustration featuring G.P. Tode from the British Museum archives



387

A monumental early 19th century musical table clock signed G.P. Tode, playing one of a selection of twelve tunes on the hour, the brass inlaid, mahogany veneered lancet arch case with buttressed front corners with Egyptian terms flanking an arched, glazed door, the sides with brass fish scale frets and brass cornucopia and flora ornamented mounts with ring handles, the top with pinnacles at the four corners, each with a brass pineapple finial, and molded plinth at the peak with a larger pineapple finial, signed, roman numeral white enamel dial with pierced and engraved gilt hands and cast floral and foliate spandrels below the arch with semicircular enamel dial having a tune selector, the various pieces named at the perimeter and indicated by a fretted hand, and also with two smaller selectors for "Music and Strike" and "Silent", as well as a "Piano" and "Forte" volume control, three train, eight day brass fusee movement with dead beat escapement viewable through an aperture in the back plate, heavy pendulum with brass bob and steel rod, horizontal 9.5 inch pinned cylinder, 15 bells and 18 hammers, playing a tune at the hour and striking the hour on a large bell

Condition: case with repairs and glue residue, some joints not properly closed, and filled with glue, right front pinnacle repaired, minor veneer losses at openings for frets and on doors, front door with veneer repair, lacking some short sections of trim on buttresses and pinnacles, minor loss to molding at right buttress base, front of base lacking short sections of trim, miters at rear of base poorly aligned, finials with polish residue, dial with minor losses to enamel at winding arbors, tune selection hand replaced, movement lacking one mounting bracket, bell stand with soft solder repair, dirty, running, striking, and music playing, would benefit from service

\$12000-\$16000 Circa 1820 34in x 17.5in x 10.5in





388

England, for Francisco Ibanez, Zaragoza, an early 19th century English complicated table clock, the mahogany and figured mahogany veneer break arch case with pagoda top and ball finials, ebonized moldings, brass stop chamfered corners with pierced oak leaf and acorn ornament flanking a door with brass quarter round trim, and base with deep cavetto molding, case sides with handles and fish scale frets, gilt brass dial with spiral ribbon border, acanthus engraving, roman numeral silvered chapter ring, subsidiary silvered chapters at the corners for regulation, day, date and month, the arch with silvered moon phase dial below an equation of time indicator having a silvered plate with scale marked "Clock fast of sun" and "Clock slow of sun", and blued steel hands, eight day, three train fusee movement with verge escapement and six large, knopped pillars, chiming the quarters on ten bells, and striking the hour on a larger bell

Condition: case with significant restoration, minor dings and veneer losses at corners of base, ebonized moldings with losses at front right and right side, and also with a few repairs, dial good, silvered components with minor tarnish and staining, movement dirty and with scattered fingerprint staining, crutch replaced, running, chiming, and striking, chime hammers in need of adjustment, would benefit from service

\$3000-\$4000 Circa 1820 24.5in x 13.75in x 11in



389

John Parsons, London, a late 17th century table clock, the ebonized case with molded base and top, and with inverted bell top with knopped handle, the front door with fretted aperture at top, the sides with glazed apertures and glazed rear door, 7 inch composite dial with matted center, ringed winding apertures, mock pendulum aperture and date aperture with engraved wheatear border, signed roman numeral silvered chapter ring with fleur de lis half hour markers, arabic five minute indication at the periphery, fretted, blued steel hands, and flanked by four cast spandrels, three train movement with back plate having engraved acanthus scrolls and bird head, recoil escapement, six knopped pillars, and alarm, striking the hour on a bell and with pull quarter repeating on six bells

Condition: case with restoration and replacements, veneers with checking, door fret with significant losses, handle with tarnish and pitting, dial good overall, mock pendulum aperture now with engraved plate, silvered components with minor tarnish, minute hand repaired, movement dirty and with minor tarnish, escapement converted from verge, back plate with a few steady pin and screw holes from removed components, running and striking, pull repeat functional, alarm functional, would benefit from service

\$2000-\$3000 Circa 1690 16.75in x 10.75in x 7in



390
Dent, London, a late 19th century half seconds beating mantel regulator with detent escapement, the oak case with molded base on adjustable brass feet, break arch top with brass ball finials, and arched glass panels at sides and front, the interior with mirrored back, and three turned columns supporting the fusee timepiece movement with half seconds pendulum, Harrison's maintaining power and pivoted detent escapement, polished brass dial with roman numeral silvered chapter ring and arabic seconds above 6:00, serial #843

\$1000-\$1500 Circa late 19th c 19.25in x 12in x 6.75in



391
J.C. Jennens & Son, London, a good ship's bell clock for Tiffany & Co., New York, cylindrical brass case with fabric backed frets at the sides and brass bezel with thick beveled glass, roman numeral silvered dial signed "Tiffany & Co. New York" and with patinated brass hands, substantial two train fusee movement with lever platform and ship's bell striking, sounding on a large bell behind the movement, with Jennens & Son stamp on the front plate behind the motion work

\$3000-\$5000 Circa 1900 9.5in x 9.5in x 5.5in

392
John Wise, Lonsdon, a late 17th century winged lantern clock, case with ball feet, columns and finials at the corners, the top with engraved fret at the front, sides doors with wings having engraved, fretted ornaments, sheet iron back with hoop and spikes, and alarm mechanism, and top with large bell and finial, roman numeral silvered chapter ring with trident half hour markers, the center signed and with tulip engraving, alarm disc with engraved Tudor rose, and fretted iron hand, thirty hour two train movement with verge escapement and anchor fluke form pendulum between the trains

\$1200-\$1600 Circa 1680 15in x 5.75in x 5.75in

393
John Georg Dykers, Vienna, a mid 19th century Biedermeier style hanging regulator, six light mahogany case with exaggerated ogee bracket having a semicircular bottom, the linear features outlined with contrasting stringing and veneer, beveled cornice and shaped top with acanthus carving flanking a central anthemion, roman numeral glass dial with cast, gilt bezel and blued steel hands, 45 day weight driven timepiece movement with dead beat escapement, brass clad weight and pendulum with ebonized wooden rod and backless brass bob

\$1200-\$1600 Circa mid 19th c 51in x 13.5in x 6.5in





394

Simon Willard, Roxbury, Mass, a good early 19th century Roxbury case tall clock, the mahogany and mahogany veneer case with tall base on ogee bracket feet and with line and shaded quarter fan inlay, trunk with quarter columns with brass stop fluting, flanking a molded, rectangular door having veneer with fiddle-back figure and inlays matching the base, the reverse with printed advertising and instruction label by Isaiah Thomas, the bonnet with columns having brass stop fluting, arched, glazed door, brass trimmed dial mask and surmounted by fretwork and three fluted plinths with brass finials, 12 inch, roman numeral white painted dial with blued steel hands, date aperture and signed "Simon Willard" above 6:00, spandrels with gilt borders and containing floral ornament, and the arch with an oval painting of a male figure standing on a quarter deck, in late 18th century naval dress, a sword in his right hand, and the background with other vessels, eight day, two train brass movement striking the hour on a bell, regulated by a pendulum with iron rod and brass clad bob, and driven by green painted tin can weights, the interior of the backboard signed "S. Willard" in white chalk

Condition: case refinished, front feet with glued splits, base with horizontal split and vertical split at right, veneer repair at bottom of plinth for left quarter column, polish residue at edges of brass components, label with minor losses, bonnet door with joint repair at upper right, trunk door lock replaced, fretwork repaired, finials replaced, dial with craquelure, minor losses, and touch ups to white ground and numerals, date dial repainted, signature very faint, movement dirty, oily, back cock lacking one screw, weights with minor losses, one with rust at top, ticks and strikes

\$15000-\$20000 Circa 1800 93in x 20in x 10.25in

395

Aaron Smith, Ipswich, Mass., a good late 18th century tall clock, grain painted pine case with low, stepped molded base below a trunk with thumb molded door having snipe hinges, rotating wooden toggle catch, and plaque on the inside marked "Jonathan Ingersoll Ipswich Mass. 1747 - 1817", the bonnet with thumb molded break arch door having split turned columns and snipe hinges, conforming cavetto moldings and complex molded cornice, sheet brass composite dial with roman numeral pewter chapter ring, cast spandrels, blued steel hands, and boss in the arch engraved "Ipswich Aaron Smith September 16th 1778", thirty hour iron posted frame movement with recoil escapement and count wheel striking, with lead weights, and pendulum with lead backed brass bob and iron rod, together with a late 19th century photo album with two images of the clock, and a copy of the "Peterborough Transcript" dated Feb. 18, 1865

Condition: case in a 19th century grain painted finish, with minor dings and scratches, later removable base an old addition, bonnet door glass cracked, dial with minor tarnish, spandrels painted gold, one spandrel loose, movement dirty, ticks and strikes, one pulley replaced, pendulum bob tarnished. Photo album with wear and foxing, newspaper with some discoloration. Based on the information in the photo album and plaque on interior, it appears that the clock belonged to Captain Jonathan Ingersoll of Ipswich, Mass. The first image of the clock is focused on the bonnet and dial, the second (which is opposite an image of Ingersoll's home) features a full length view, in a room, presumably in the Ingersoll house. The image shows the clock without the added base, as it appears when lifted from the later construction.

\$3000-\$4000 Circa 1778 89.25in x 19.25in x 12.5in



396

E. Howard & Co., Boston, Mass., special order tall clock similar to the model No. 79 in a Horner quality carved mahogany case with heavily carved floral decoration, hood with Northwind carving to crest and free standing reeded columns with carved capitals, the trunk has a carved floral basket above the arch of the heavily beveled and beaded edge glass door, the base with raised sunburst center, carved paw feet and free standing columns, 13in brass dial with applied brass arabic numerals on a silvered chapter ring with subsidiary seconds and plaque with Howard signature, eight day, time and strike movement driven by two brass weights, brass pendulum rod

Condition: the old finish is in excellent condition nicely polished, case with only minor imperfections; silvered dial with minor oxidation to silvering, moon phase in good condition; original pendulum, weights, door key, pulleys and hands; pendulum suspension broken but present, gong present but detached

\$2500-\$3500 Circa 1885 96.5in x 22in x 14in

397

Benjamin Cheney, Hartford, Conn., a good late 18th century tall clock, the cherry case on ogee bracket feet, base with deep cavetto molding transitioning to the trunk with fluted quarter columns flanking a thumb molded door with incurved upper corners, and bonnet with fluted columns flanking the break arch door, with conforming cornice molding, sides with glazed apertures, and fretted crest with three tall plinths, brass composite dial with matted center, roman numeral chapter ring with subsidiary seconds, and convex boss in the arch signed "Benjn Cheney Hartford", date aperture above 6:00 and fretted, blued steel hands, eight day brass movement with arch cutouts at bottom of plates, knopped pillars, recoil escapement, and striking the hours on a large bell, with tin can weights and pendulum with iron wire rod and brass clad bob

Condition: case in an old finish, numerous dings and minor losses at base, front left foot with losses and a bit shorter than the others, underside of base with some replaced glue blocks and stain, rear right foot replaced, trunk door escutcheon replaced, filled loss to stile at trunk door lock, surfaces of left and right transition moldings below bonnet with marring, left side plinth on bonnet replaced, finials replaced, dial with minor tarnish and lacking silver on chapter ring, hands lacking blue, movement ticks and strikes, weights with minor oxide, pendulum suspension with minor bends, bob with significant oxide

\$2000-\$3000 Circa 1780 87in x 20in x 10.5in





398

A late 18th century American tall clock in the Newport, Rhode Island style, solid mahogany case with bonnet having fluted columns at the front, molded cornice and surmounted by three leaf carved urn and flame finials on short plinths, trunk with fluted quarter columns flanking a block front door with a nine lobe shell carving at top, and base with a molded panel, 12 inch, roman numeral painted metal dial with floral spandrels, moon phase behind twin hemispheres, subsidiary seconds and date display above 6:00, blued steel serpentine hands, and eight day, two train movement striking on a bell, with lead weights and brass clad pendulum with wooden rod

Condition: refinished and with repairs, lacking case bottom and feet, base panel replaced, bonnet door veneer replaced, center plinth lacking cap, one finial lacking base, bonnet door glass cracked, dial with craquelure and minor paint loss, movement very dirty and with verdigris spotting on back plate, pendulum rod replaced, bob with verdigris, ticks and strikes, needs service

\$1500-\$2500 Circa late 18th c 98in x 19.75in x 10in



399

F.A. Skelton, an interesting late 19th century long duration hanging regulator, American walnut case with incurved bottom bracket, door with thick beveled glass, the stiles and rails with bead and reel molding, the sides also with beveled glasses below a molded panel, and top with reeded, pulvinated frieze, complex cornice molding and segmental pediment with acanthus and central half round carving in the tympanum, and a row of small spheres across the top, arabic numeral silvered dial with cast spandrels, seconds bit above a central aperture, blued steel hands, and signed "F.A. Skelton 1892", the well finished brass movement with four legged gravity escapement, spotted plates, wheels with decorative drilling instead of crossings, driven by a double compounded nickel plated weight, and regulated by a pendulum with wooden rod contained in a nickel plated sleeve, and nickel plated, damascened bob with beveled glass insert, and with a custom made Plexiglas dial to allow viewing of the escapement

Condition: case with bumps and dings, particularly at projecting corners and top edge of cornice molding, minor chips to corners, left side molding below frieze with minor loss at back, lacking two of the small spheres at the case top, molding surrounding beveled glass on right side with a few dents and white paint residue, putty around glasses with significant losses, dial with minor tarnish, movement good, running, weight good, pendulum bob with small fingerprint stain beneath glass, pendulum keystone with break and attempted soft solder repair. This clock was sold at Skinner, Inc. on 10/22/2021, sale 3790B, "The Estate of David G. Newsom", lot 97.

\$3000-\$4000 Circa late 19th c 51in x 17.75in x 8.75in

400

An imposing early 20th c. wall clock, the well made mahogany architectural case with large incurved bottom bracket below a rectangular mid section with paneled front flanked by fluted pilasters and with six carved corbels supporting a break front top with molded bottom, large round bezel with recessed panel spandrels, and ogee molded pitched pediment with dentil moldings, 13 inch, arabic numeral silvered dial with spurious Tiffany & Co. signature, and eight day brass timepiece movement signed "W&H Sch"

Condition: case top with paint spatter and with paint line at back, case sides with paint at back, case with split at lower left, front, dial surround with two open miter joints, drop at base of bottom bracket detached and lacking one dowel, bezel glass not seated, held in place with tabs soldered to bezel surface, dial resilvered and all figures repainted, hands painted black, movement plates with dings and scratches, bushings, and fingerprint staining, second wheel pivots with significant scoring, pallets with significant wear, ticking, needs service

\$1000-\$1500

Circa early 20th c 62in x 23in x 11.5in



2026 NAWCC THIRD ANNUAL NEW ENGLAND REGIONAL

Everett Arena, 15 Loudon Road, Concord, New Hampshire
Friday April 24, 9-4 Saturday April 25, 8-12



120 Mart Tables - Register Now!
WWW.NEWENGLANDREGIONAL.ORG

LEAD HOST - NEW ENGLAND CHAPTER 8

Co-Hosts: Greater Massachusetts Chapter 87, Connecticut Chapter 148,
New Hampshire Chapter 189, Vermont Chapter 109, Maine Chapter 89.

SOCIAL & EDUCATION PROGRAMS

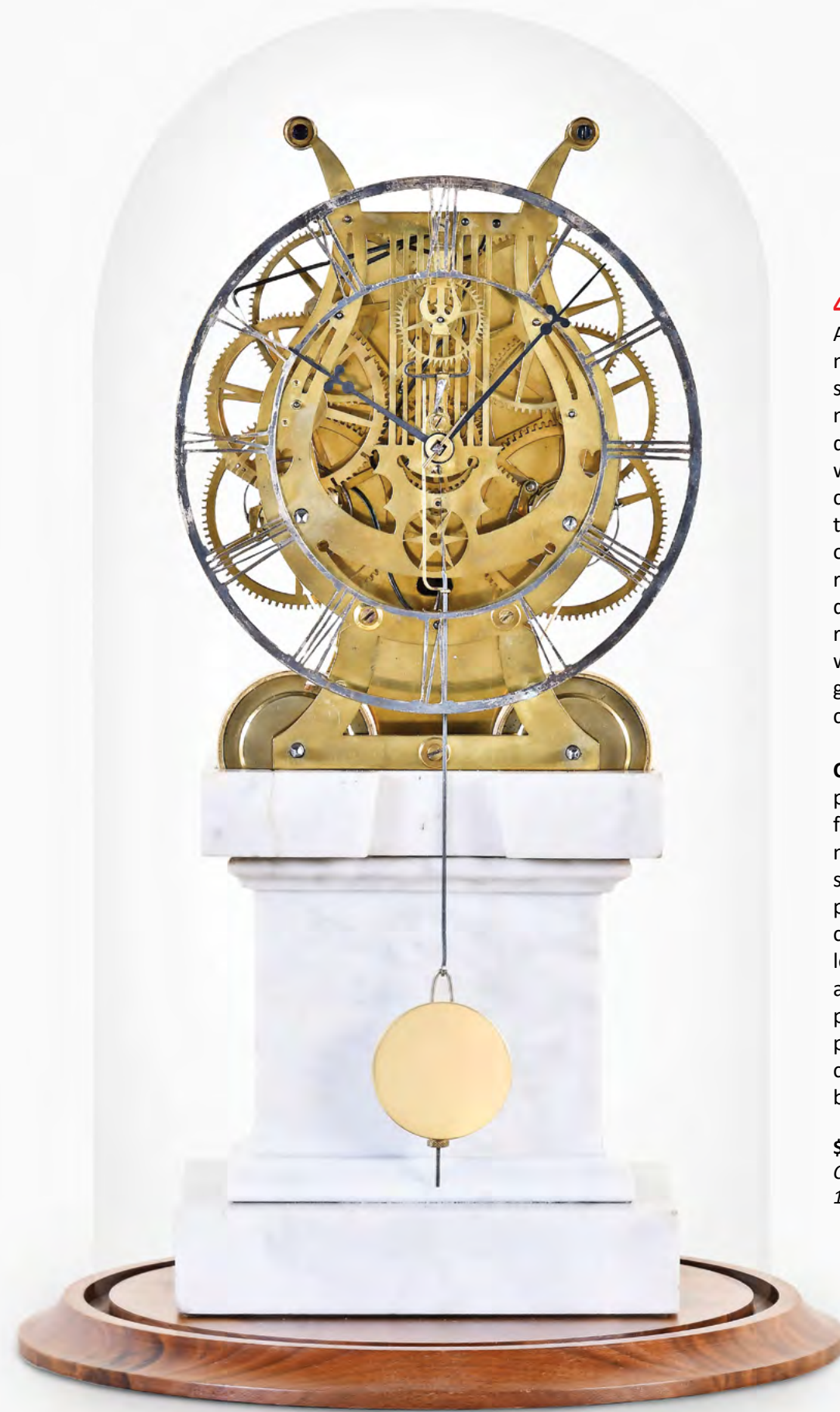
- **Thursday Evening Pizza Social, Presentation by Bob Frishman on the 1851 London Crystal Palace Exhibition.**
- **Friday Evening Buffet Dinner, Presentation by Ron Price on Early Waltham Watches and Watchmaking.**
- **Saturday Noon-4 Auction Preview & Reception, Schmitt Horan & Co., 80 Raymond Road, Candia, NH.**



401
Chelsea Clock Co., Boston, Mass., "Model E" marine clock sold to Fisher Body Co. founder Charles Fisher for his yacht the Saramar III in a polished round brass case mounted on conforming stepped mahogany back with roman numeral silvered dial signed by maker, blued steel moon hands, eight day, time only, spring driven movement, case and movement both stamped serial #67430, rear of case also stamped "YC611 / MV5777 / SARAMAR" along rim and "CHELSEA CLOCK CO" on brass tag

Condition: the historical clock hearkening back to America's gilded age is in excellent original condition; case nicely polished; dial excellent with minor imperfections; ticking and recently serviced by consignor; includes original Chelsea winding key and custom painted wooden name plaque and paperwork on the history of the yacht the Saramar III. Charles Fisher, born in 1880 in Norwalk, Ohio, founded the Fisher Body Co. in 1908 with his brother Fred. Fisher Body Co. was renowned for its innovative automotive designs such as the Chevrolet Corvair and many important technological advances including dual windshield wipers, slanted windshields, etc.

\$8000-\$12000 Circa 1910 17.25in x 17.25in x 4.5in



402
Attributed to Hiram Camp, a very rare mid 19th century American lyre form skeleton clock, the two train fusee movement with a front plate having decorative, well finished fretting, the wheels with with five and six spoke crossings, recoil escapement outside the front plate, and striking the hour on a large bell behind the movement, roman numeral skeletonized silvered dial with blued steel club hands, and resting on a white marble pedestal, with a later turned wooden base and glass dome, dimensions are of the clock and marble base

Condition: good overall, running, plates with evidence of plugged holes for correcting depths done at time of manufacture, upper right pillar with significant marring from pliers, some poorly done bushing work, some steel components with minor oxide, dial loose and with bends, losses to silver, and lacking two mounting sockets, pendulum bob replaced, marble pedestal with insignificant flakes and chips, and crack at upper left, wooden base with UV fading

\$3000-\$5000
Circa 1850
17.25in x 7.25in x 5.25in

403

Attributed to Atkins, Whiting & Co., a very rare mid 19th century shelf clock with unusual Ives tin plate movement, rosewood veneered case with bevel moldings, the base with long rectangular door with mirror, the upper door with reverse painted glass featuring flowers and other naturalistic ornament in gold and on a blue ground, roman numeral sheet zinc dial with blued steel club hands and eight day, coil spring driven movement with well finished, two part sheet iron plates, German silver bushings, blued wheels, roller pinions, roller verge, mainspring arbors with stop work, and striking the hours on a gong

Condition: case with minor veneer losses, upper glass with minor losses to paint, dial with inpainted losses, minute hand short, movement plates with minor oxide, lacking stopwork fingers, running and striking. This clock was sold by Richard Bourne Co., Inc., lot number 134, at the first session of the Anthony J. Sposato sale, October 29, 1985. While the clock appears never to have had a label, our attribution is based on the similarity of this clock to other products by this company, and it's use of a movement which is likely a design by Joseph Ives. Characteristics of this movement are seen in other Ives work, but the plate design appears to be unique.

\$1200-\$1600

Circa 1850 - 55

16.625in x 9.625in x 4.5in



404

Ithaca Calendar Clock Co., "Box Skeleton" double dial perpetual calendar mantel clock with nicked cast metal skeletonized frame, and contained in a glazed walnut cabinet with ebonized moldings, nicked cast metal dial chapter rings, chapter ring for time with roman numerals and chapter ring for calendar with arabic numerals, eight day, time and strike, spring driven movement

Condition: the case is in good condition with an old finish; original nickel plating on frame, dials and movement; original papered calendar rollers with minor losses; original pendulum; a very good example.

\$4000-\$6000

Circa 1875

22.5in x 11.75in x 7.75in

405

David Lindow, Lake Ariel, Penn., reproduction of a "Willard Lighthouse" clock in a mahogany case, painted metal dial by John Barton, moon hands, eight day weight driven brass movement with passing strike, bezel cast by Devon Met-
alcrafts and turned by Lindow, bell jar blown by Sweetwater Glass, and case by William Towne of Elmira, NY, movement signed "DL Fecit," David Lindow's trademark

Condition: Figured mahogany case in very nice condition has a finely made copy of the brass movement that was used in the original example, this example has a drop off strike, attached to the case is a small cast brass profile of Lafayette, the case bottom is signed "Lafayette No. 1" and the makers signature. The movement was designed and built by Lindow using ideas for a number of period movements.

\$5000-\$7000

Circa 2005 30.25in x 9in x 9in

406

H.L.F. Clocks, Lake Ariel, Penn., "The Weymouth" or "Willard Lighthouse" clock, in a figured mahogany case by William Towne of Elmira, NY, the enamel dial was spun by David Lindow and painted by John Bartron, the bell jar was hand blown by Sweetwater Glass in New York, the eight day, weight driven brass movement with alarm and moon hands was made by David Lindow, the case label is marked "106" which designed the smaller sized case in the run of 16 clocks, the brass castings were cast by Devon Metal crafts as well as the bezel which was turned after casting by Lindow.

Condition: case in very nice condition in original finish has a finely made copy of the brass movement that was used in the original example, this timepiece has the outside alarm, two decorative cast brass ornaments are attached to the case, paper label on the case bottom. The "H.L.F." Stands for "Hartwigs, Lindow, Fucci" giving homage to Gerhard Hartwigs who trained Lindow; and Michael Fucci who was the customer who drove the project.

\$5000-\$7000

Circa 2000 33.5in x 9.5in x 9.5in

407

Wayne R. Cline, Bowling Green, Kentucky, "Willard Light-
house" clock, mahogany case, painted metal dial, moon hands, eight day, weight driven brass movement with drop off strike

Condition: Mahogany case in nice condition in an original finish, case is stamped "1" and "C153301", two cast brass ornaments on the case front, the weight brass movement is a modified banjo movement and is signed.

\$3000-\$4000

Circa 2000 33in x 8in x 8in





408

An American hanging girandole clock, mahogany case with gilt acanthus carved bracket, round box with gilt door having gilt sphere ornaments and reverse painted convex glass featuring Aurora in her chariot, throat with rope molded gilt frame with reverse painted tablet marked "Patent" and brass side arms, and round head with brass bezel having applied spheres like the box door, convex glass, and surmounted by a carved, gilt eagle, arabic numeral painted dial with blued steel hands, and eight day, weight driven brass movement, the pendulum with brass clad bob and iron rod

\$3000-\$4000 Circa 19th & 20th c 45.25in x 13in x 4.25in



409

Elmer Stennes, Weymouth, Mass., "Girandole" hanging clock, gilt mahogany case, painted metal dial, Curtis type hands, eight day, weight driven brass movement. Case is stamped "6" and "69"

\$2000-\$3000 Circa 1969 43in x 12in x 5in



410

Foster Campos, Pembroke, Mass., "Girandole" hanging clock, gilt mahogany case, painted metal dial, Curtis type hands, eight day, weight driven brass movement by David Lindow of Gravity, PA, reverse painted tablets by Tom Moberg

\$2000-\$3000 Circa 2004 43.5in x 12in x 5in



411

Wayne R. Cline, Bowling Green, Kentucky, reproduction of a diamond head banjo clock, inlaid mahogany case, painted metal dial by the Dial House in Dallas, Georgia, barbed hands, eight day, weight driven brass movement by David Lindow with passing strike, case is stamped "28", reverse painted tablets by Tom Moberg

\$1000-\$1500 Circa 2005 41.5in x 10in x 3.75in



412
David Lindow, Gravity, Penn., "Coffin" clock in a cherry case, painted metal dial by the Dial House of Georgia, barbed hands, eight day, weight driven brass movement, case made by John Bartron of Honesdale, Penn.

\$800-\$1200 Circa 1999 35.5in x 8.5in x 3.75in



413
William Cummens, Roxbury, a good, early 19th century patent timepiece or banjo clock, the mahogany case with gilt frames containing reverse painted glasses, the box with landscape and three figures on horseback, the background with stone bridge and mountains, the throat with stylized foliage, green and red background, and white border, roman numeral painted sheet iron dial signed "Warranted by Wm Cummens", blued steel hands, and brass movement with through bolts, alternate train and T bridge suspension, pendulum with brass clad bob, and lead weight

\$1500-\$2000 Circa 1815 29.5in x 9.75in x 4in



414
Boston area, an early 19th century Willard school banjo clock, the mahogany and mahogany veneer case with cross banded frames, cast brass side arms and bezel, and ball and spire finial, arabic numeral white painted sheet iron dial with blued steel barbed hands, and eight day brass, weight driven timepiece movement with recoil escapement, T bridge, through bolts, and alternate train, lead weight, and brass clad pendulum with iron rod

\$1000-\$1500 Circa early 19th c 34in x 10in x 3.5in



415
E. Howard & Co., Boston, Mass., "No. 59-8 Regulator" wall clock, walnut case with burl walnut weight baffle and contrasting bird's eye maple backboard, painted metal dial with moon hands, and eight day, weight driven brass movement.

\$2000-\$4000 Circa 1880 47in x 15.25in x 6.25in



416
E. Howard & Co., Boston, Mass, "No. 1 Regulator" large banjo clock in a rosewood grain painted case, paper on zinc dial, blued steel diamond hands, eight day timepiece movement

\$2000-\$3000 Circa 1874 50in x 19.5in x 6in



417
E. Howard & Co., Boston, Mass., "No. 75 Regulator" hanging clock in a walnut case with reverse painted lower tablet, roman numeral painted metal dial with blued steel spade hands, eight day, time only, weight driven movement with damascened pendulum bob

\$2000-\$3000 Circa 1875 33in x 15.25in x 5.25in



418
E. Howard & Co., Boston, Mass, "Marble Dial Clock No. 27" hanging clock, wooden case, marble dial, trefoil hands, eight day timepiece movement

\$1500-\$2500 Circa 1875 35.5in x 17.75in x 5in



419
Ithaca Calendar Clock Co., Ithaca, NY, "No. 3 Vienna" hanging clock in a walnut case with 8 inch roman numeral papered metal dials and pierced fret mask, 30 day, time and perpetual calendar, spring driven movement by E.N. Welch

\$2000-\$3000 Circa 1880 52in x 15.25in x 7in



420

Ithaca Calendar Clock Co., Ithaca, New York, "No. 2 Bank" double dial hanging calendar clock, walnut case, paper on metal dials, maltese hands, eight day, double wind weight driven brass movement

\$1500-\$2500 Circa 1880 58in x 21in x 9.5in



421

Seth Thomas Clock Co., Thomaston, Conn., "Office Calendar No. 9" hanging clock, oak case with painted metal dials, blued steel hands and seconds bit, eight day, time and perpetual calendar, weight driven dead beat escapement movement beating seconds with maintaining power

\$3000-\$5000 Circa 1885 67.5in x 19.25in x 8.5in



422

Ansonia Clock Co., New York, New York, extremely rare "Mirror Swing" mantel clock, in an ornately decorated and filigreed silver plated framed case with wooden back, set with mirror flanked by two bronzed nude female figures, the clock housed in a bronzed drum with cast brass trim surmounted on a swinging arm pendulum suspended above and in front of mirror, eight day, time only, spring driven movement with arabic numeral papered dial stamped with Ansonia logo

Condition: the clock appears to be in untouched original condition; a good patina on silver plating with some minor tarnish along base and some minor warping along edges of frame; the clock is ticking but needs adjustment to avoid the pointer at bottom from rubbing on base. This unlisted model is more scarce than the hanging model listed in Tran Duy Ly's "Ansonia Clocks & Watches" on page 706 and may be the first time this model has been offered at public auction. We know of only two other examples, now in private collections.

\$4000-\$6000 Circa 1880 21.5in x 13.25in x 5in

Index

American Waltham Watch Co. 360
Atkins, Whiting & Co. 403
Audemars Piquet 333, 336
Ballou & Whitcomb 364
Bechot 378
Berrauds 358
Bell & Ross 347
Benrus Watch Co. 340
Box Calendar (Ithaca Calendar Clock Co.) 404
Bremont, Henley on Thames 344
Calendar Clock 404, 419-421
Camp, Hiram 402
Campos, Foster 410
Carriage Clock 368-375
Chelsey Clock Co. 401
Cheney, Benjamin 397
Cline, Wayne R. 407, 411
Coffin Clock 412
Cooper & Co., Wm. 352
Crystal Regulator 376
Cummings, William 413
Daytona (Rolex)
Dent 390
Diamond Head Banjo 411
Donald, John 327
Drocourt 369, 372
Dykers, John Georg 393
Edwards, James 384
Eshelby, J. 383
Eureka Clock Co. 367
Evans 380, 382
Felix the Cat 344
Ives, Joseph 403
Flightmaster (Omega) 339
Gigandet 345
Girandole 408-410
GMT Master (Rolex) 330
Guilmet, Andre Roman 376, 377
Haley, Charles 357
Hamilton Watch Co. 342
Heuer 341
Howard & Co., E. 396, 415-418
International Watch Co. 346
Ithaca Calendar Clock Co. 404, 419, 420
Jacot, Charles 361
Jennens & Son, J.C. 391
Jurgensen, Jules 348, 349
Lantern Clock 392
Lighthouse Clock 405-407
Lindow, David 405, 412
Longines – Wittnauer 334
Marble Dial Clock No. 27 (E. Howard & Co.) 418
Margaine 374
McFerran, William 386
Musical Clock 387

Mystery Clock 377
Nardin, Ulysse 366
Nicolet 356
No. 2 Bank (Ithaca Calendar Clock Co.) 420
No. 3 Vienna (Ithaca Calendar Clock Co.) 419
Omega Watch Co. 338, 339
Parsons, John 389
Partington, C. F. 326
Portofino (International Watch Co.) 346
Prior, Edward 360
Regulator No.1 (E. Howard & Co.) 416
Regulator No. 59-8 (E. Howard & Co.) 415
Regulator No. 75 (E. Howard & Co.) 417
Rolex 329, 330, 331, 332, 337
Roskell, R. 354
Savage, George 351
Ship's Bell 391
Sky Chief (Benrus Watch Co.) 340
Smith & Son, S. 350
Smith, Aaron 395
Skelton, F. A. 399
Skeleton Clock 380-386
Speedmaster Reduced (Omega) 338
Stennes, Walter 409
Swinger 379
Submariner (Rolex) 330
Tall Clock, Grandfather, Floor 394-398
Tiffany & Co. 391
Vienna Regulator 393
Weymouth, The 406
Wheel Cutting Engine 365
Willard, Simon 394
Willard Lighthouse Clock 405-407
Wise, John 392
Yema 343

Schmitt Horan & Co. General Terms & Conditions

SALES TAX and BUYER'S PREMIUM: You agree to pay the Buyer's Premium on every item purchased. The Buyer's Premium is a percentage of the hammer price of each item added to the sale total for that item. There is NO sales tax in New Hampshire. The Buyer's Premium is 20% of the hammer price.

SPECIAL EVENT: The special event portion of the May 1 auction (Lots 1 - 325) will not offer phone bidding, internet bidding, nor absentee bidding. Bidder must be in attendance or have someone represent them in attendance to bid. See list of recommended Buyer's Agents below for suggestions.

LIVE BIDDING: The May 2 auction is open to the public and in-person attendance is allowed and encouraged. On items after lot 325 we also offer several alternatives to attending in person, including our own live bidding software at bids.schmittoran.com. You may also bid live at www.invaluable.com or www.liveauctioneers.com or www.bidsquare.com. The total Buyer's Premium for third party platforms purchases is 28%, which includes an 8% fee charged by the third party. Because of the inherent delay in and the remote nature of online bidding, any item sold through any of the various online platforms may be reopened at the discretion of the auctioneer at anytime during the auction.

PHONE BIDS: On items after lot 326 you may register to bid via telephone. It is necessary to contact us at least to 72 hours prior to the auction to arrange for phone bidding. Pre-registration is required.

ABSENTEE or LEFT BIDS: In all cases, a left or absentee bid will be executed for as low a price as possible. Many absentee bids lose by only one bid, a frustration that can be reduced if a live person has authority to bid "one more time". Therefore, we offer **PLUS ONE (+1)** bidding format to allow our absentee bidders to be more competitive, contact us for details. Bid forms are available on our web page or in the rear of the catalog. Bids submitted online, by fax, snail mail or e-mail to: **bids@schmitt-horan.com** must be received no later than 48 hours prior to the start of the auction. Absentee bidding and phone bidding services are provided by Schmitt Horan & Co. as a courtesy to our clients. Schmitt Horan & Co. cannot be held responsible or liable for failure to receive or execute absentee bids.

BUYER'S AGENT: We are increasing access to live bidding agents, who can independently execute your bids the day of the sale. This service provides an independent set of eyes to validate a potential purchase or to provide flexibility in spending needs. Other additional services provided by these agents include careful packing and flexible delivery options. Buyer's Agents generally charge a commission on each successful sale, which they will discuss with you prior to executing your bids.

Agents available for our May 2, 2026 sale are listed below:

Clocks, Watches & Antiques
Rick Merritt rmerritt@ptd.net or (610) 780-5979
John Kovacic jkovacic@verizon.net or (315) 823-1205

PAYMENT FOR SUCCESSFUL BIDS: We will normally notify successful bidders within three business days of the auction. We use e-mail to notify bidders and postal mail if a client does not have e-mail available. Personal checks drawn on a U.S. bank are acceptable. We also accept VISA, Mastercard, Discover, American Express and Paypal, all subject to an additional 3% processing fee. Note that shipping charges are extra and will be billed by Schmitt Horan & Co. or a third party at the time of shipment. Payment is due on receipt of invoice, and no later than 15 days from the date of the auction. Items not paid for within the 15 days from the date of the auction will be charged a 2% monthly interest rate on the balance due. Large international transactions may be performed via wire transfer. Details available upon request.

ESTIMATES and RESERVES: After each description, we have indicated a high and low dollar estimate that should be used as a general guide. The final price may vary considerably from these estimates. There are few items in this sale with a reserve, or confidential minimum selling price, established with the consignor or vendor. Items failing to sell will be noted in the results sheet as \$0.00.

PHOTOGRAPHS: Please note, some items when photographed, particularly watches, may have shadows, reflections or other marks that are a result of the photographic process and are not permanent. Both buyer and seller grant unrestricted use of auction photographs and prices realized to Schmitt Horan, LiveAuctioneers.com, Invaluable.com and Bidsquare.com.

ITEM DESCRIPTIONS & CONDITIONS: Employees do their best to aid and assist the customer, however any statements made by Schmitt Horan & Co. employees, agents or contractors are not considered a definitive record of what is being sold. The final record of what is being sold in a lot under any and all circumstances is the catalog provided by Schmitt Horan & Co., both printed and online. If there is a discrepancy between employee statements and the catalog or other errors on third-party websites, the catalog listed at https://bids.schmittoran.com is the final and ultimate legal record of what is offered in the lot. We do our best to identify restoration, alteration or other condition issues in the condition report. We shall not be held liable for failure to do so. **IT IS THE RESPONSIBILITY OF THE BUYER TO CONFIRM CONDITION PRIOR TO BIDDING. Condition reports are subject to change up to the moment the lot is sold and it is the responsibility of the buyer to review any changes or updates to the condition report until that time.** If the lot description includes the words "as found" or "as is" the item is sold without any guarantees. **All lots containing multiple items are considered in "AS IS" condition and cannot be returned.** General maintenance items such as broken suspension springs, broken or missing weight cords, & missing keys are not mentioned. Most clocks and watches will require cleaning and service after purchase. All costs associated with this are the responsibility of the client. Dimensions are approximate.

ITEMS & ACCESSORIES: It is the buyer's responsibility to verify that he / she has received accessories that may be separate when taking possession of their merchandise. Items purchased by bidders off site are not available for pick up during the sale at the auction hall.

SHIPPING: We use outside companies to ship clocks that provides services worldwide: Please see Vendor Section for details. We are often able to offer "in-house" shipping on watches.

PICK UP IN LIEU OF SHIPPING: Purchases by absentee bidders, phone bidders or internet bidders may be picked up no sooner than 3 business days following the sale. You or your agent may arrange pickup by appointment at our office in Candia, NH. Please plan to settle your account at time of pick up. Items left in our custody for over 30 days from the date of the auction will be charged a storage fee of \$25 per item per week, which must be paid before items are released. We shall not be held liable for damage occurring to any item left in our custody after 30 days from the date of the auction.

RETURNS AND REFUNDS: Returns will be considered only for items that do not conform to catalog description. **UNDER NO CIRCUMSTANCES WILL RETURNS BE ACCEPTED OR REFUNDS ISSUED LATER THAN 30 DAYS AFTER THE AUCTION.** If there is a problem and a refund or adjustment is requested we ask to be notified within one week of the auction and require to be notified ABSOLUTELY no later than 30 days of the auction or 7 business days after the item(s) are delivered, whichever is earliest, no exceptions. Transit damage alone is not sufficient reason to return an item. We will assist in claims against transport companies.

DEFAULT and LITIGATION: **REGISTRATION TO BID INDICATES ACCEPTANCE BY THE BIDDER OF THESE TERMS ENFORCEABLE AS A NEW HAMPSHIRE CONTRACT.** Schmitt Horan & Co. will not be liable for default by either the buyer, consignor or the vendor. No purchase shall be claimed or removed until paid for in full. Schmitt Horan & Co. reserves the right to refuse to accept bids made by a defaulting buyer at any future auction and to collect all costs and attorney's fees from the buyer associated with litigation and storage involving default. All legal disputes arising from this contract shall be disputed, litigated or mediated under New Hampshire law in the State of New Hampshire. All consignors or vendors are represented in our records by either name or a code directly associated with that name and are also a legal party to this contract.

VENDORS & TRADE RELATIONS

Transport/Shipping

These are blanket wrapped hand delivery specialists. Ask for quotation.

- >Mr. Scott Salzarulo, 200 W. Housatonic, #20, Pittsfield, MA 413-212-1252
- >Ms. Wendy Buckus, 64 Hutchins, Concord, NH, 03301, 603-491-5199, nwtransport@aol.com
- >Mr. Scott Cousins, 22 Nichols St. Merrimac MA 01860, scottcousins22@aol.com, (978) 419-9353
- >Sure Express Worldwide, 110 Industrial Way, Portland, ME 04103, (800) 335-9996, sureexpress@maine.rr.com
- >Marius Popescu, 1421 Amherst Ave, Los Angeles, CA 90025, (310) 866-3744, mariuspopescu2002@gmail.com

Packing, Crating & Shipping (Standard Big Box Shipping, UPS, FED EX, USPS)

- >Mail It Unlimited, 45 Portland Rd, Ste 7, Kennebunk, ME 04043 (207) 985-2087, auctions@parcelroom.com
- >The UPS Store, 497 Hooksett Rd, Manchester, NH 03104, (603) 666-9800, store4236@theupsstore.com
- >Package Central, 1 Freetown Rd, Raymond, NH 03077, (603) 734-9071, packagecentralnh@gmail.com

Barometer Repair

- >Winchester, MASS, 01890, Wayne Paskerian, (781) 729-0113, winway2@verizon.net

Clock & Watch Sales & Repair MID-WESTERN & WESTERN STATES

- >Carlsbad, CA, 92008, Richard Ivkovich, 2916 State St, (760) 729-1225
- >Costa Mesa, CA 92627, Robert Emenger, Buck's Clock Shoppe, 440 E. 17th St, (949) 631-3215, bucksclockshoppe@msn.com
- >Laguna Beach, CA 92651, Dean Armentrout, 2185 Laguna Cyn-#B-1, 949-494-2711, dean-armentrout-antiques.com
- >San Diego, CA, 92103; Time Traveler, Rich Wauson, 4227 Park Blvd, 619-298-5391, rew11ttc@gmail.com
- >Palatine IL, 60067, Tick-Tock Clock Repairs Inc., 342 South Hart St, 847-991-4230, www.ticktockclock.com
- >Mendota Height, MN, 55118, Cutter Edge, Inc 1169 Veronica Ln, (612) 280-5560 wcutter@cutteredge.com
- >Oklahoma City, OK, 73122 Richard Garrett, House of Time, 3144 N MacArthur, (405) 946-0029 rghorologist@hotmail.com

Clock & Watch Sales & Repair EASTERN STATES & CANADA

- >Burlington, CONN, 06013; Mel Brown, 37 Village Lane, 860-673-2256 – Tickdoc1@aol.com
- >E. Norwalk, CONN, 06855; The Clockery, 14 Van Zant St, 203-838-1789-www.clockery.com
- >Cromwell, CONN, 06051, Frank De Felice, New Britain Clock Repair, 26 Edgewood St, 860-635-5599
- >North Haven, CONN, 06473, Yankee Clock Peddler, (203) 288-4250, www.yankeeclockpeddlerct.com
- >Tampa , FLORIDA, 33612, Boyd Clock Repair, 11620 N. Florida Ave, (813) 777-3437, boydclocks@gmail.com
- >Harrison, MAINE, 04040, Harry Hepburn, 828 Edes Falls Rd, 04040, (207) 583-2821
- >Saco, MAINE, 04072; Robert Boyd, 60 Shadagee Rd. #24 - 603-801-8292, bobbboyd@rlbpab.com
- >Scarborough, MAINE, 04074, Scarborough Hollow Clock Works, 700 US Route 1, Ste 104, (207) 730-7288 - scarboroughhollow@maine.rr.com
- >Amesbury, MASS, 01913, Vincent Harrild, 1 River Ct. Suite 219 - (978) 314-8620, harrildvr@greenet.net
- >Newton, MASS, 02458, Watertown Watch & Clock, 230 California St, (617) 244-3779, chris@watertownwatchandclock.com
- >Swampscott, MASS, 01907, Phillips Clock Shop, 330 Essex St, (781) 593-1333, sales@phillipsclockshop.com, www.phillipsclockshop.com
- >Wayland, MASS, 01778, Michael Poisson, 508-655-1958, mljw92@aol.com
- >Warren, MICHIGAN, 48093; The Clockworks, 8385 Old 13 Mile Rd, (800) 574-9421, jkuechle@clockworks-inc.com, www.colcokworks-inc.com
- >Exeter, NEW HAMPSHIRE, 03833; Barlows Clock Repair, 45 Donna Dr. 603-778-1452
- >Hollis, NEW HAMPSHIRE, Russ Greenwood, 25 Louise Dr, 603-881-8309, rgtimeout44@msn.com
- >Catskill, NEW YORK, 12411; Franklin Micare, 349 Main St, 518-828-5751, franklinmicare@rocketmail.com
- >Little Falls, NEW YORK, 13365; Saving Time, PO BOX 169, savingtime@clockandwatchsite.com, (315) 823-1205, www.clockandwatchsite.com
- >New Hope, PENNSYLVANIA, 18938, 6340 Lower York Rd, (215) 862-2415, www.nationalclockrepair.com
- >Douglassville, PENNSYLVANIA, 1860 Weavertown Rd, 19518, Merritt's Anitques, (610) 689-9541, info@merritts.com, www.merritts.com
- >Peace Dale, RHODE ISLAND, Old School Antiques, Peter Nunes, 4 Hopkins Ln, (410) 742-2112, peter.nunes@verizon.net
- >Manassas, VIRGINIA, 20110; Orsini & Frost, 9071 Center Street, 703-368-0618

Dial Restoration & Repainting

- >The Clocksmith, 1531 Bower Ln, Johns Island, SC 29455, (843) 327-0455, bryan@clockrepaircharlestonsc.com, www.clockdialrestorations.com
- >The Dial House, 3971 Buchanan Hwy, Dallas, GA 30157, (770) 445-2877, dial_house@juno.com, www.dialhouse.net

Related Restoration Materials/Vendors

- >Merritts, Inc., Box 277, Douglasville, PA, 19518, 1-800-345-4101 – www.merritts.com
- >Timesavers, Box 12700, Scottsdale, AZ, 85267, 1-800-552-1520 – www.timesavers.com

Hand Painted Tablets

- >Lee Davis, 4150 Old Orchard Rd., York, PA 17402, 717-757-7267
- >Tom Moberg, 2323 Vandekaar Rd, Owasso, MI 48867 989-723-3112

All listings are made free of charge. We apologize for any error or omission. Please let us know of address changes or poor service from those recommended.



Fax: (603) 432-2271
 Phone: (603) 432-2237
 E-mail: bids@schmitt-horan.com

--This form must be submitted 48 hours prior to the start of the auction--

PLEASE BID ON MY BEHALF, BIDDING AS CHEAPLY AS POSSIBLE, ON THE LOTS LISTED AND DESCRIBED BELOW. THE \$ FIGURE ENTERED IN THE RIGHT COLUMN IS MY MAXIMUM "HAMMER" PRICE, AND I UNDERSTAND THERE IS A 20% BUYER'S PREMIUM ADDED TO THAT AMOUNT. THERE IS NO SALES TAX IN NH.

Please note: We offer "+1 BIDDING SERVICE". See our website for details.

LOT #	BRIEF DESCRIPTION	\$ BID / +1 (Y/N)
		\$ _____ 1
		\$ _____ 2
		\$ _____ 3
		\$ _____ 4
		\$ _____ 5
		\$ _____ 6
		\$ _____ 7
		\$ _____ 8
		\$ _____ 9
		\$ _____ 10
		\$ _____ 11
		\$ _____ 12
		\$ _____ 13
		\$ _____ 14
		\$ _____ 15
		\$ _____ 16

Additional sheets are acceptable. Upon notification that my bid or bids are successful, I shall promptly remit the balance due. I understand that I will be billed separately by the packing company for shipping.

_____/_____/____ Total number of bids _____)
 Signature _____ Date _____

Name _____

Address _____ City _____

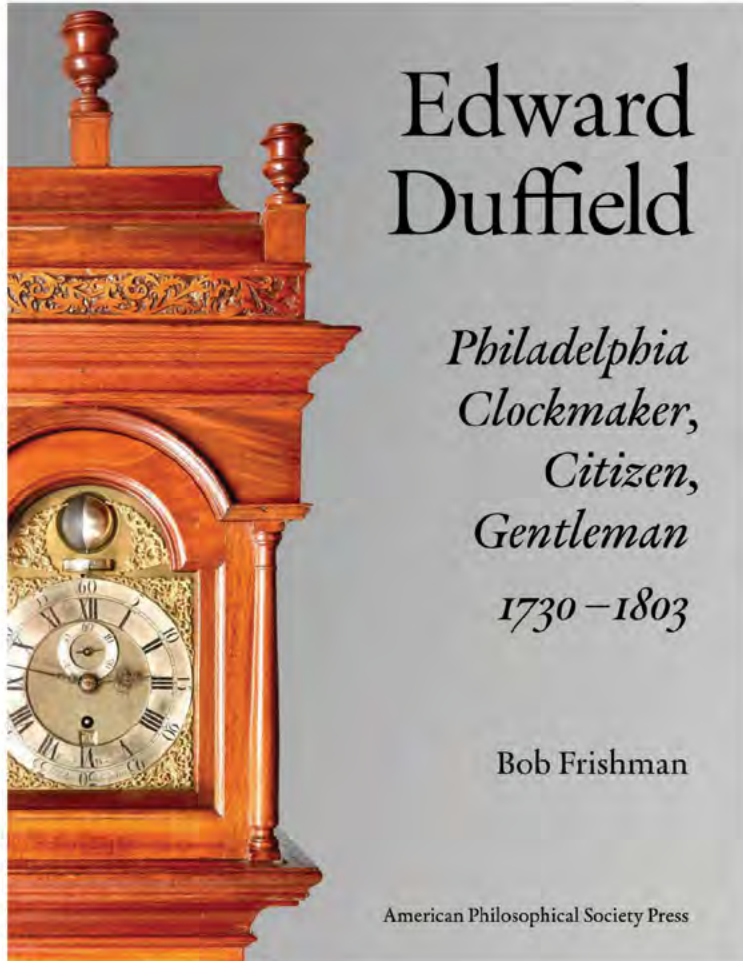
State _____ Zip _____ E-mail _____

Telephone: Evening _____ Day _____ Cell _____

All invoices will be mailed or e-mailed two to three days after the auction. Please do not contact us regarding an invoice until at least 72 hours after the auction.

We offer this service as a convenience to our customers, and we cannot be responsible for late mail, failed transmissions, or other failures to execute bids. We are also not responsible for an unreadable FAX written in blue ink. Please use black ink, print clearly and confirm successful transmission by phoning us. All bids are confidential. We urge you to FAX this form as regular mail can prove unreliable. Express or Priority mail are also satisfactory. NH Lic #5060. You may also submit this form by email or phone. For other questions or bids e-mail: bids@schmitt-horan.com or telephone the number listed above.

COPIES OF THIS FORM ARE ACCEPTABLE



NEW BOOK BY BOB FRISHMAN

256 PAGES
227 ILLUSTRATIONS
HARDCOVER W/DUST JACKET

71 DOCUMENTED DUFFIELD
CLOCKS AND INSTRUMENTS

JUST \$60
ORDER ON AMAZON

SIGNED COPY FROM
AUTHOR

\$75 POSTPAID
WWW.EDWARDDUFFIELD.COM

"Far more than a treatise on pre-industrial horological timekeeping, this book tells the compelling stories of a man, a city, and an era, while deepening our appreciation for Duffield's stately sentinels — often a colonial American family's most valuable possession — and the times and places in which their makers lived." *University of Pennsylvania Press*

"With over forty years as a horologist and some 140 published articles, Bob Frishman is abundantly qualified to relate Duffield's story." — *Antiquarian Horology*

"[It's] refreshing that the author fully integrated the life of Edward Duffield into the historical events of the time...if you enjoy reading about American history or colonial clockmaking, this book should be in your library." — *Watch & Clock Bulletin*

"In *Edward Duffield*, Frishman offers us a truly definitive work, not just on an individual clockmaker, but on the world in which that man lived. It draws connections across many aspects of the horological, political, commercial, social and religious life of the earliest years of the nation, and is highly recommended reading for anyone who is interested in horological or American history — or both!" — *Horological Times*

"With its first-rate photography and long and useful bibliography, it should be on every library shelf." — *Maine Antique Digest*