



PO Box 31 Candia, NH 03034  
sales@schmitt-horan.com  
603.432.2237

Online Bidding

[bids.schmitt-horan.com](https://bids.schmitt-horan.com)  
[www.liveauctioneers.com](https://www.liveauctioneers.com)  
[www.invaluable.com](https://www.invaluable.com)  
[www.bidsquare.com](https://www.bidsquare.com)

## *Rare American and European Clocks, Watches & Precision Regulators*

### **Sunday, May 4th 2025**

**May 4 at 11:00am**

**Lots 1 - 400 Discovery Sale**

*In-Person Bidding Only*

**May 4 at 3:00pm**

**Lots 401- 684 Live Auction**

*Absentee, Phone, Online, In-Person Bidding*

**Public Preview**

**Saturday, April 26 at 1pm to 5pm**

*In conjunction with the New England  
NAWCC Regional (April 25 - 26)*

**Sunday, May 4 at 8am to 10:45am**

*Preview Also By Appointment*

**April 28 to May 3**

**Candia, New Hampshire**

Welcome to Schmitt Horan & Co.'s Spring 2025 live auction event. Lots 1 - 400 are an in-person bidding event only. Lots 401 - 684 will offer all bidding methods including in-person, online, phone and absentee. Lots 401 - 500 are included in this catalog, all other lots can be found online.

Auction Location  
**80 Raymond Rd  
Candia, NH 03034**

Follow us on social media on **Facebook, Instagram, Twitter and Youtube**. Please visit [schmitt-horan.com](https://schmitt-horan.com) to view lots not listed in this catalog and / or additional detail images and condition reports not shown in this catalog.

Additional information on food, parking and accommodations can be found on [schmitt-horan.com](https://schmitt-horan.com). For more detailed instructions on bidding, please see terms and conditions at the rear of catalog.

We are always seeking fine consignments. Please contact us for a confidential consultation and appraisal. See invitation at rear of the catalog for more information.

Daniel Horan  
NH Auctioneer License No. 5060

### **SUMMARY OF TERMS OF SALE**

**REGISTRATION** Is required prior to the sale for all bidders, including online, internet, phone and absentee.

**CONDITION OF LOTS** We describe and evaluate each lot to the best of our ability. The condition and authenticity should be confirmed by personal examination. The final decision to bid, and the amount to bid is at the bidder's discretion and liability.

**ITEMS PURCHASED** Successful bidders must remit payment within 15 days of close of the auction. It is the buyer's responsibility to verify that he / she has received accessories that may be separate when taking possession of their merchandise.

**BUYER'S PREMIUM** Buyers pay 20% premium on the hammer price. Invaluable, Live Auctioneers and Bid-square bidders pay an additional fee of 8%, as well as the 20% buyer's premium.

**PAYMENT** Acceptable forms of payment include pre-approved personal checks, cash, Paypal, and all major credit cards: VISA, Mastercard, American Express & Discover. There is an additional 3% processing fee for all credit card and Paypal purchases.



**Lot 437**  
*A French Industrial  
Oarsman clock*



*From left to right  
Lots 445, 442, 451, 444, 447, 441, 440, 443*



# CONTENTS

- 1 EVENT ANNOUNCEMENTS
- 4 HOROLOGICAL EPHEMERA  
& JEWELRY
- 5 WRIST WATCHES
- 10 EUROPEAN POCKET WATCHES
- 11 AMERICAN POCKET WATCHES
- 16 MARINE CHRONOMETERS
- 18 RARE ATMOS CLOCKS
- 20 CARRIAGE & DESK CLOCKS
- 22 FRENCH & MYSTERY CLOCKS
- 37 BRACKET & SKELETON CLOCKS
- 41 LENZKIRCH CLOCKS
- 42 JEWELER'S REGULATORS
- 44 INVITATION TO CONSIGN
- 46 TALL & TOWER CLOCKS
- 50 AMERICAN CLOCKS
- 66 INDEX
- 67 TERMS AND CONDITIONS
- 68 VENDOR INFORMATION
- 69 BID FORM
- 70 FRISHMAN BOOK ON E. DUFFIELD

## BIDDING INCREMENTS

We will make every effort  
to use the following increments:

\$0 - \$500: \$25 increments  
\$501 - \$1000: \$50 increments  
\$1000 and up: Auctioneer's Discretion

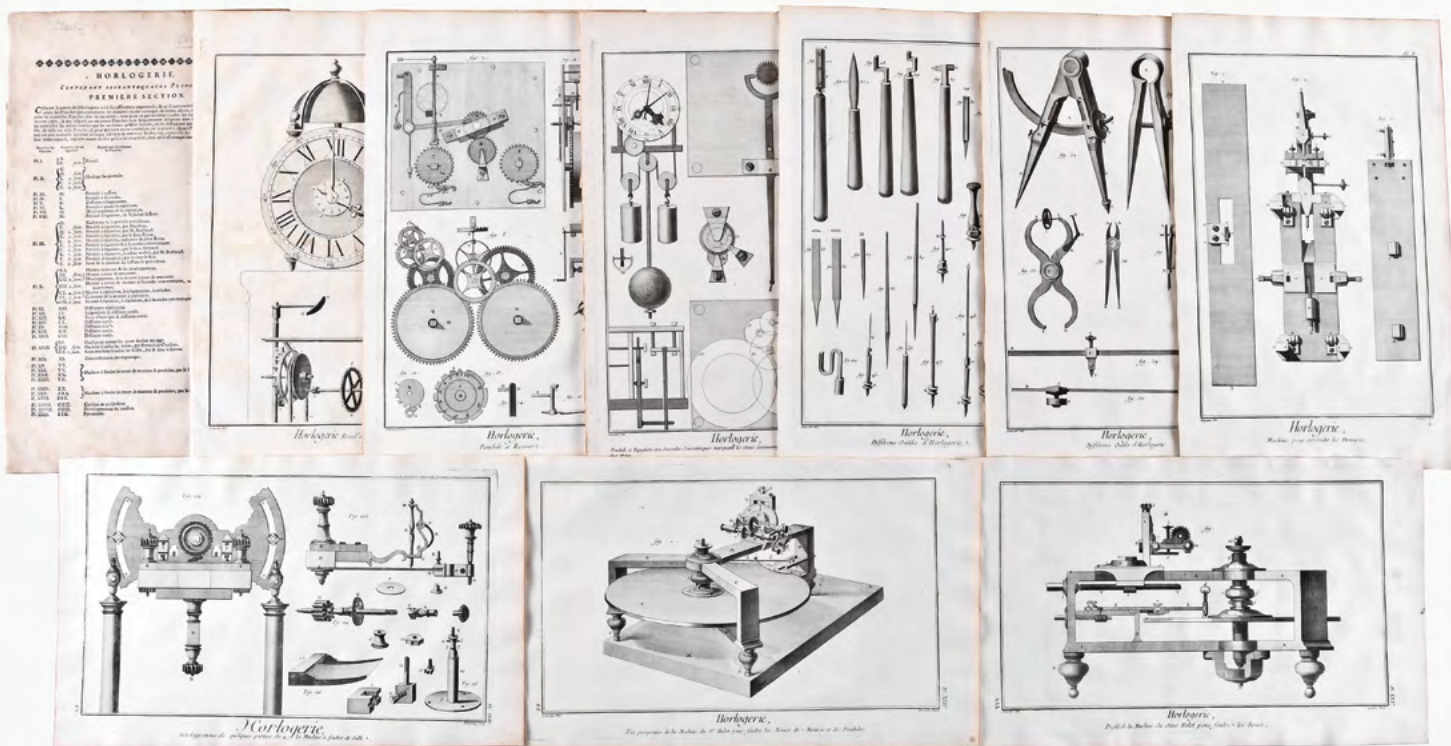
Typically...  
\$1001 - \$2000: \$100 increments  
\$2001 - \$4000: \$200 increments  
\$4001 - \$10,000: \$500 increments  
\$10,001 and up: \$1000

*Lots 401 - 500 are included in this catalog.  
Photos and descriptions for lots 1- 400 and  
501-684 are available online.  
Please see [www.schmitt-horan.com](http://www.schmitt-horan.com).*

**Lot 507**  
*Ansonia La Grande shelf clock  
(listed in online catalog)*







**401**  
 Diderot and D'Alembert, the horology portion of Diderot's encyclopedia, unbound, 75 pages total, 13 text and 62 copper plate engravings on 15.5 x 9.5in laid paper, together with a first edition of Cescinsky & Webster's "English Domestic Clocks", 1913, and a first edition of Cescinsky's "The Old English Master Clockmakers", 1938

**\$200-\$300** Circa 18th & 20th c

**402**  
 John Donald, London, a good late 1960s crown ring, the 18 karat, yellow gold reticulated ring of cylindrical form with 13 diamonds and six sapphires set at the ends of inward facing stalks, with London hallmark, the date letter for 1968, and the maker's "JAD" stamp, size 6 1/2, 9.3g TW

**\$2000-\$3000** Circa 1968





#### 403

Patek, Philippe & Co., Geneva, for Gubelin, a good mid 20th century ref. 3445 "Calatrava" wrist watch, 37 jewel, automatic winding, adjusted to 5 positions, temperature and isochronism, cotes de Geneve decorated rhodium plated movement with lever escapement and Gyromax balance in a round, 18 karat yellow gold case with 18 karat yellow gold mesh bracelet and engraved monogram on back, stick marker silver sunburst dial with date aperture at 3:00 and gold stick hands, serial #1123501, 35mm, 81.7g TW, case, dial and movement signed

**\$7000-\$9000** Circa 1965



#### 404

Patek Philippe, Geneva, a ref. 3598 "Golden Ellipse" wrist watch, 18 jewel, manual winding, adjusted to 5 positions, temperature, and isochronism cotes de Geneve decorated cal. 16 - 250 movement with lever escapement in an 18 karat yellow gold elliptical case with Patek Philippe black reptile strap and original 18 karat buckle, baton marker blue sunburst dial with gold dauphine hands, serial #529841 (case) , 1273604 (movement) , 30 x 35mm, 43.2g TW, together with a silk covered, velvet lined box signed Bucherer, case, dial and movement signed

**\$4000-\$6000** Circa 1975





**405**  
Patek, Philippe & Co., Geneva, a mid 20th century ref. 3425 “Calatrava” wrist watch, 37 jewel, automatic winding, adjusted to 5 positions, temperature and isochronism, cotes de Geneve decorated rhodium plated cal. 27 - 460 movement with lever escapement and freesprung Gyromax balance in an 18 karat yellow gold case with leather strap, tapered baton marker silver dial with baton hands, serial #1111755, 33.5mm, 43.8g TW, case, dial and movement signed

**\$3500-\$5500** Circa 1960



**406**  
Rolex Watch Co., Geneva, a mid 20th century ref. 6075 wrist watch, 18 jewel, automatic winding, adjusted to 6 positions rhodium plated cal. A295 movement with lever escapement and super balance in an 18 karat rose gold case with black reptile strap and gold Rolex buckle, arrow marker matte silver dial with luminous alpha hands, short coronet, date aperture at 3:00, and roulette date ring, serial #79665, 35mm, 64g TW

**\$3000-\$4000** Circa mid 20th c



**407**  
Universal Geneve, a good mid 20th century “Tri Compax” wrist chronograph, 17 jewel manual winding rhodium plated movement with lever escapement in a round stainless steel case with sculpted lugs and stainless bracelet, grained silver dial with hour and minute registers, constant seconds, day and month apertures, moon phase display with concentric date, and luminous dauphine hands, serial #2110538, 35mm

**\$3000-\$4000** Circa 1960



**408**  
Montres Rolex S.A., Geneva, a late 20th century ref. 4108 “Celini” wrist watch, 19 jewel, manual winding, rhodium plated cal. 1601 movement with lever escapement in an 18 karat yellow gold rectangular case with rounded corners and brown leather strap with gold plated Rolex buckle, burl walnut dial with gold stick hands, serial #4320686, 24.5 x 41mm, 37.2g TW

**\$2000-\$3000** Circa 1980





**409**

Omega, Switzerland, a good “Speedmaster Professional Mark II” wrist chronograph, 17 jewel, manual winding gilt plate movement with lever escapement and micrometric regulator in a stainless steel tonneau case with ref. 1162/173 bracelet, gray racing dial with 30 minute and 12 hour registers, and constant seconds, at 3, 6 and 9:00 respectively, with Speedmaster hands, serial #32850929, 41mm x 45.5mm, with Omega service warranty card dated 6/18/2021

**\$2000-\$3000** Circa 1970



**410**

Vacheron & Constantin, Geneva, a good mid 20th century man’s wrist watch, 17 jewel, manual winding, adjusted, cotes de Geneve decorated, rhodium plated cal. P454/5B movement with lever escapement and micrometric regulator in a round, 18 karat yellow gold case with large lugs, engraved back, and leather strap, baton and arabic numeral silver dial with engine turned center, gold baton hands, and blued steel sweep seconds hand, serial #492431, 35mm, 47.6g TW, case, dial and movement signed

**\$2000-\$3000** Circa 1945



**411**

Omega Watch Co. Switzerland, a late 20th century ref 145.013 “Flightmaster” wrist chronograph, 17 jewel, manual winding gilt plate cal. 911 movement with lever escapement and micrometric regulator in a grained stainless steel case with stainless ref. 1159 bracelet and 155 ends, gray dial with white 1/5 seconds chapter ring, 30 minute and 12 hour registers and constant seconds at 3, 6, and 9:00 respectively, with Flightmaster hands, serial #33311039, 43mm x 52.5mm

**\$1800-\$2500** Circa 1970



**412**

Breitling SA, Grenchen, an early 21st century ref. A13370 “Super Avenger” wrist chronograph, 25 jewel, automatic winding, damascened rhodium plated ETA cal 7750 movement with lever escapement in a large stainless steel case with rotating bezel and W5110 bracelet, arabic numeral white dial with date aperture, 12 hour register, constant seconds, and minute register at 3, 6, 9, and 12:00 respectively, and luminous baton hands, serial #2585658, 48mm

**\$1400-\$1800** Circa early 21st c





**413**

Gruen, Switzerland, a mid 20th century style 641 Curvex "Batwing" drivers wrist watch, 17 jewel, manual winding, rhodium plated cal. 440 movement with lever escapement in a yellow gold filled case with fancy hinged lugs, arabic numeral silver dial with gold leaf hands, serial # V27287 (case) , 8073 (movement) , 24 x 41mm

**\$600-\$800** Circa 1950



**414**

Patek Philippe, Switzerland, a good early 20th century gold dress watch with enamel ornament, 18 jewel, manual winding, adjusted to 6 positions, temperature and isochronism, cotes de Geneve decorated rhodium plated movement with lever escapement and cut bimetallic balance with gold screws in an 18 karat yellow gold, hinged back and snap bezel open face case with enamel ornamented band, bezel, and back cover, the back also with engraved monogram, arabic numeral grained silver dial with gold moon hands, serial # 803372, 44.5mm, case, dial and movement signed

**\$2500-\$3500** Circa 1925

**415**

An early 17th century Continental pocket watch, the oval iron case with turned brass pendant, the domed front cover with engraved, shield shaped crest below a rising sun, brass dial plate with engraved border and also with an image of the sun, roman numeral silver dial with engraved central rosette and blued steel tulip hand, iron movement with decorative blued balance cock, rectangular pillars, verge escapement, stackfreed, and bristle regulator, 39 x 66.5 x 37mm

**\$800-\$1200** Circa early 17th c



**416**

American Waltham Watch Co., Waltham, Mass., a good late 19th century model 1872 pocket watch, 16 size, 16 jewel, stem wind and lever set, adjusted, damascened nickel plate movement with lever escapement, cut bimetallic balance with gold screws, gold jewel settings, and Fogg micrometric regulator in an 18 karat yellow gold, hinged back and bezel, plain polished open face case with engraved monogram on back cover, roman numeral single sunk white enamel dial with script signature and blued steel spade hands, serial #2067139, 129.4g TW

**\$2800-\$3600** Circa 1885





**417**  
American Waltham Watch Co., Waltham, Mass., a good late 19th century model 1872 pocket watch, 16 size, 16 jewel, stem wind and lever set, adjusted, damascened nickel plate movement with lever escapement, cut bimetallic balance with gold screws, gold jewel settings, and Fogg micrometric regulator in an 18 karat yellow gold, plain polished hunting case, roman numeral, outer red 5-minute markers, single sunk white enamel dial with blued steel Breguet style hands, serial #1831075, 134.3g TW

**\$2800-\$3600** Circa 1885



**419**  
E. Howard & Co., Boston, Mass., a good late 19th century series VII pocket watch, N size, 15 jewel, stem wind and set, adjusted to 6 positions and temperature damascened nickel plate movement with lever escapement, cut bimetallic balance with gold screws, gold jewel settings, and whiplash micrometric regulator in a 14 karat yellow gold, intricately engraved hunting case with observation cuvette, and cuvette engraved "J.T. Pike to H.P. Kilby 1893", roman numeral single sunk white enamel dial with blued steel umbrella hands, serial #215922, 142.5g TW

**\$2500-\$3500** Circa 1890



**418**  
American Waltham Watch Co., Waltham, Mass., a late 19th century model 1870 pocket watch, 18 size, 15 jewel, key wind and set, adjusted gilt plate movement with lever escapement, cut bimetallic balance with gold screws, and Woerd micrometric regulator in an 18 karat yellow gold, engine turned hunting case signed "Ball, Black & Co. New York", the interior of the front cover engraved "Thomas N. Bailey U.S. Army 1873 Nashville Tenn.", roman numeral single sunk white enamel dial with blued steel fleur de lys hands, serial #550725, 138.8g TW, together with a small archive containing research on Thomas Bailey

**\$2800-\$3200** Circa 1870



**420**  
American Waltham Watch Co., Waltham, Mass., a late 19th century model 1883 "Crescent St" pocket watch, 18 size, 15 jewel, stem wind and lever set, adjusted, ornately damascened nickel plate movement with lever escapement, cut bimetallic balance with gold screws, gold jewel settings, and Church micrometric regulator in a 14 karat yellow gold, engraved and part scalloped band hunting case, the back set with eight small diamonds, arabic numeral, outer red 5-minute markers, double sunk white enamel dial with blued steel fleur de lys hands, serial #6019279, 138.1g TW

**\$1800-\$2200** Circa 1895





**421**  
American Waltham Watch Co., Waltham, Mass., a late 19th century model 1883 “Crescent St.” pocket watch, 18 size, 17 jewel, stem wind and lever set, adjusted, ornately damascened nickel plate movement with lever escapement, cut bimetallic balance with gold screws, gold jewel settings, and Church micrometric regulator in a 14 karat yellow gold, engraved hunting case with scalloped band and cuvette engraved “Presented to Geo. E. Martin by his employees of the Westinghouse Electric and Mfg. Co. March 25th 1895”, roman numeral O’Hara style multicolor enamel dial with blued steel fleur de lys hands, serial #6019316, 138.8g TW

**\$1800-\$2300** Circa 1895



**422**  
Elgin National Watch Co., Elgin, Illinois, an early 20th century “Father Time” pocket watch, 18 size, 21 jewel, stem wind and lever set, adjusted to 5 positions, temperature and isochronism, damascened nickel plate movement with lever escapement, cut bimetallic balance with gold screws, gold jewel settings, and Moseley micrometric regulator in a 14 karat yellow gold engraved hunting case, and cobalt blue, single sunk enamel dial with gold arabic numerals and gold Louis XV hands, serial #10422452, 134.7g TW

**\$1800-\$2300** Circa 1905



**423**  
Elgin National Watch Co., Elgin, Illinois, a rare grade 274 “Veritas” with wind indicator at 9:00, 18 size, 21 jewel, stem wind and lever set, adjusted to 5 positions, temperature and isochronism, damascened nickel plate movement with lever escapement, cut bimetallic balance with gold screws, diamond endstone, gold jewel settings, gold center wheel, and Moseley micrometric regulator in a gold filled, screw back and bezel, engine turned and engraved open face case, arabic numeral, double sunk white enamel dial with seconds at 3:00 and wind indicator at 9:00, blued steel spade and poker hands, serial #10513484

**\$1600-\$2200** Circa 1905



**424**  
Ball Watch Co., Cleveland, Ohio, a good mid 20th century Ball Hamilton 998 “Official RR Standard” pocket watch, 16 size, 23 jewel, stem wind and lever set, adjusted to 5 positions and temperature, damascened nickel plate movement with lever escapement, monometallic balance with gold screws and Elinvar balance spring, gold jewel settings, gold center wheel and micro-metric regulator in a gold filled, screw back and bezel Ball model open face case, arabic numeral single sunk white enamel dial with blued steel spade and poker hands, serial #B649258,

**\$1000-\$1500** Circa 1940





**425**

Joseph Thaddaus Winnerl, Paris, a mid 19th century two day marine chronometer, 13 jewel reverse fusee movement with Earnshaw's spring detent escapement and cut bimetallic chronometer balance with helical balance spring, signed roman numeral silvered dial with constant seconds at 12:00, power reserve indication at 6:00, and blued steel Breguet style hands, in a gimbale brass bowl, and contained in a mahogany box with brass furniture, with original winding key, serial #263

**\$3000-\$4000** Circa mid 19th c 5.5in x 6in x 6in



**426**

Elgin National Watch Co., Elgin, Illinois, a mid 20th century model 600 marine chronometer discussed in Marvin Whitney's "Military Timepieces", 14 jewel damascened nickel plate fusee movement with Earnshaw spring detent escapement and Hamilton monometallic balance, arabic numeral silvered dial with constant seconds at 6:00, power reserve indication below 12:00, and black steel spade and poker hands, in a gimbale brass bowl, and contained in a three tier mahogany box with brass furniture, serial #919

**\$2000-\$3000** Circa 1943 7.5in x 7.5in



**427**

Edmond Jaeger, Paris, a boxed silver deck watch for the French navy, 18 jewel, stem wind and set gilt bar movement with lever escapement and bimetallic Guillaume balance with gold screws in a coin silver, hinged back and snap bezel open face case, the back marked "Marine Service Hydrographique 79303 Jaeger", signed arabic numeral, single sunk white enamel dial with blued steel spade and poker hands, and contained in it's original mahogany box with chamois lined receiver, serial #79303, 73.5mm

**\$1800-\$2500** Circa 1930 2.5in x 4.125in x 5.25in

**428**

VEB Glashütter Uhrenbetriebe (GUB), Germany, a good early 20th century two day marine chronometer, 11 jewel fusee movement with crosshatched plates, Earnshaw's spring detent escapement and freesprung, cut bi-metallic Guillaume balance with helical balance spring, and one second break circuit mechanism, signed roman numeral silvered dial with wind indicator and subsidiary seconds, and brass spade and poker hands, contained in a gimbale brass bowl, and housed in a two tier mahogany box with beveled glass top, the front with label urging caution in handling, serial #4170

**\$1000-\$1500** Circa 1915 7in x 7.25in x 7.25in







**429**  
Cie Generale de Radiologie, France, a fine and rare model GM2 Reutter Atmos clock, opalescent pressed glass case with floral wreath surrounding a nickel plated bezel and silver roman numeral dial with blued steel moon hands, Cluses movement with lever escapement, thermal motor, and nickel plated Model R torsion pendulum with seven line design, serial #2380, the case design attributed to Rene Fontayne

**Condition:** case very good, without chips or cracks, bezel with oxide and losses to plating, dial with slightly darkened silver and a few small flaws, hands good, movement components with some minor losses to plating and dulling of finish, running, thermal motor appears to be functional. As this lot contains hazardous materials, the buyer will be responsible for arranging safe transport from our facility.

**\$10000-\$15000** Circa Early 1930s 9in x 7.25in x 5.25in



**430**  
J.L. Reutter / LeCoultre, an Art Deco style model RA2 Atmos shelf clock for Tiffany & Co., the nickel plated rectilinear case with four beveled glasses and short base with canted sides, arabic numeral silvered dial signed "Tiffany & Co." and with blued steel hands, 14 jewel cal. 30A movement with lever escapement, lever with Y counterpoise, and torsion pendulum

**Condition:** case with minor scratches, nickel plating with minor oxide and loss of reflectivity, left glass with insignificant chipping at two corners, dial with minor spotting, hour hand repaired and with minor discoloration, minute with bend from hand puller and spot of discoloration, movement complete, not running, functionality of thermal motor unknown. As this lot contains mercury, the buyer will be responsible for arranging safe transport from our facility.

**\$2000-\$3000** Circa 1930s 9.25in x 7in x 5.5in





**431**

Leon Hatot, Paris, a good early 20th century Art Deco style ATO electromechanical desk clock, on a black, stepped Bakelite base, the round, beveled glass dial with chrome arabic numerals, the glass frosted behind the chapter ring, black hands with profile echoing the design of the base, and small battery powered nickel plated and spotted movement contained in a nickel plated case and with electromagnetically impulsed pendulum with single pallet at the top, advancing the escape wheel at alternate vibrations

**\$1000-\$1500**

*Circa 1930 8.75in x 7.5in x 4.25in*



**432**

Tiffany & Co., New York, a sterling silver pen holder with clock, the rectangular base with reeded edge, shallow tray at front, and two pen holders, each with Sheaffer fountain pens having 14 karat gold nibs, and flanking a square timepiece with signed black dial and eight day Concord movement with lever escapement, the base with engraved presentation to Carlisle Bastain, 28.5 troy oz. with all non silver components removed, base signed

**\$800-\$1200**

*Circa mid 20th c  
4.25in x 10.5in x 5.75in*



**433**

France, for Geo. C. Shreve & Co., a five minute repeating carriage clock with travel case, gilt Anglaise variant case with beveled glasses, the top engraved "From Alice 19th June 1885", roman numeral matte gilt dial with blued steel spade and poker hands, 8 day, two train movement with lever platform, striking the hour and half hour and repeating the last hour when activated by the front pusher, and repeating the last five minute interval through the pusher at the back, the top glass with "Hour Reprtr" and "5 Min Reprtr" in red paint, together with it's original leather bound travel case

**\$800-\$1200**

*Circa 1880 7.5in x 4in x 3.5in*

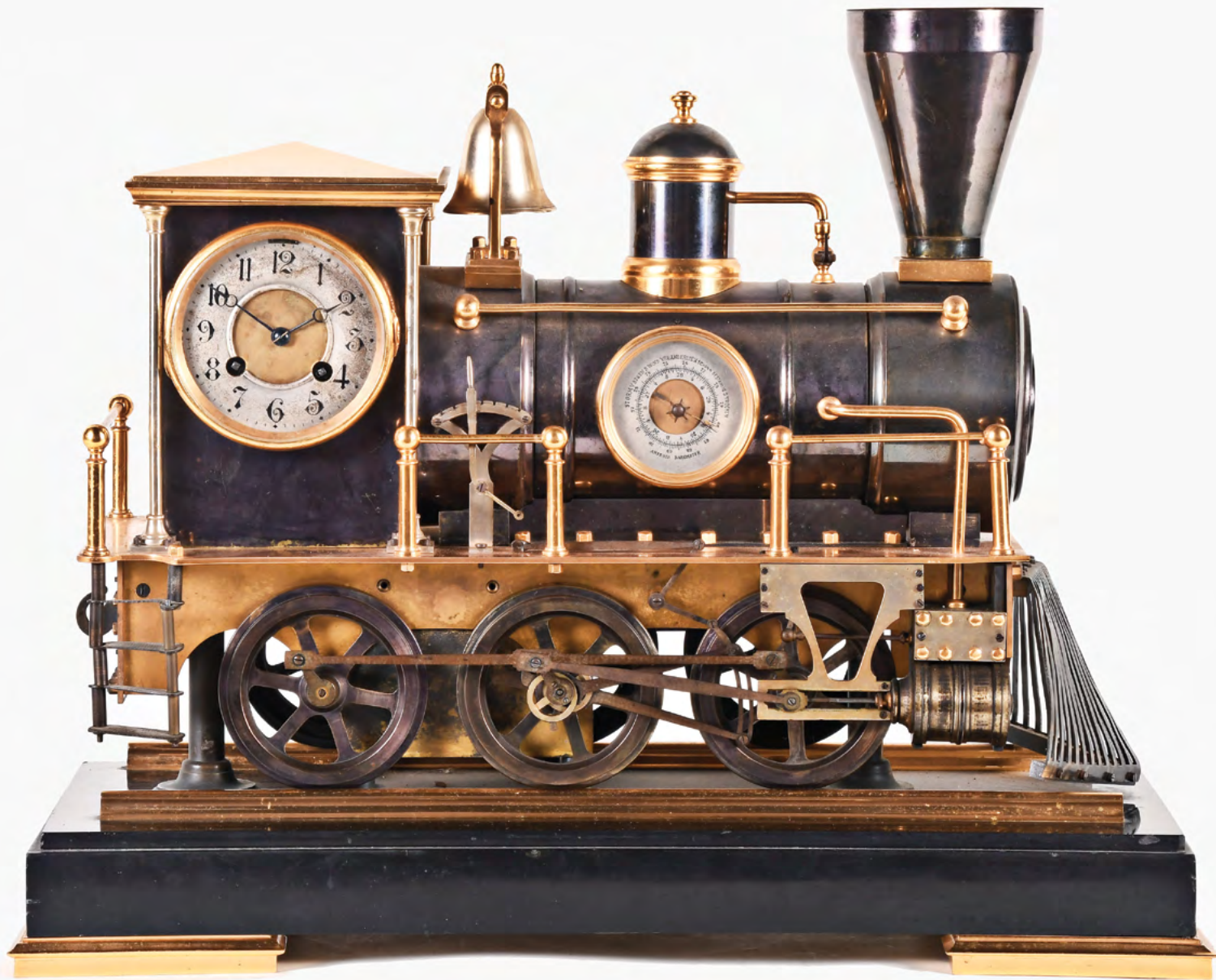


**434**

Oswald Uhrenfabrik, Germany, "Skull" rotating eye timepiece, 30 hour, time only spring driven movement in what looks to be a carved wood case with red and yellow eyes and black pupils.

**\$800-\$1000** *Circa 1930 5.25in x 3.75in x 4.75in*





**435**  
France, a rare late 19th century locomotive form compendium, the gilt and patinated engine with 0 - 6 - 0 configuration and cow catcher, the cab with arabic numeral silvered dial and containing an eight day time and strike movement with lever platform, the smoke box with funnel containing a magnetic compass, the side of the boiler mounted with an aneroid barometer, and with a clockwork motor concealed in the chassis for driving the wheels, all mounted to a stepped black slate base with gilt rails and feet

**Condition:** gilding restored, patination with minor wear and discoloration, cow catcher with minor bends, coupling rods with minor oxide but retaining their original spotted finish, compass card replaced, some components loose, clock dial with tarnish and minor staining, lacking four screws that attach the clockwork motor enclosure to the locomotive, lacking Johnson bar linkage screw, ladder with one incorrect nut, exposed screw thread behind cab, movement striking, will run with pressure on train, needs service, locomotive wheels turn under power of the motor but are rather sluggish and occasionally stop, needs service

**\$16000-\$22000** Circa 1890 16.75in x 20in x 9.25in



**436**  
Andre Romain Guilmet, a late 19th century quarter deck mystery clock, the gilt and patinated silvered bronze ship's stern with taffrail having lanterns at the ends, the deck with binnacle compass, capstans, and captain at the ship's wheel, the lower deck with a figure coiling rope, a ladder, and louvered vents flanking the gilt roman numeral dial with blued steel spade and poker hands, eight day, two train pendule de Paris movement striking on a gong, and with Guilmet's mark and modifications, the compound pendulum causing the helmsman to rock side to side as the clock runs, all mounted to an isosceles trapezoid shaped black slate base with gilt feet

**Condition:** case is very dirty and with spotting, retains the original silvered and gilt surfaces, lower deck with 1 inch spot of verdigris, base with flakes, original gong mounting board replaced with Masonite, dial dirty, hands with oxide, movement dirty, runs and strikes, would benefit from service

**\$5000-\$7000** Circa 1890 11.5in x 11.25in x 8.75in





**437**  
 Andre Romain Guilmet, Paris, a good late 19th century "Oarsman" clock, the gilt and patinated sailing vessel on a patinated sea, a barrel lashed to the deck containing the signed eight day timepiece movement with arabic numeral gilt dial, blued steel hands and signed "Dibdin & Co. Ltd. 189 Sloane St. S.W.1", the oarsman figure continually rocking as if rowing, all resting on a griotte marble base with gilt feet

**Condition:** dirty, gilding and patination good, feet a bit loose, base with tiny flakes and small loss at left corner, gilded surfaces with minor spotting and discoloration, screws attaching tiller and gunwale replaced

**\$4000-\$6000** Circa 1890 16.25in x 13.25in x 6.375in



**438**  
 France, attributed to Eugene Bazart, with movement by Etienne Maxant, a good late 19th century figural annular clock, the gilt and patinated base with four incurved sides, supporting inverted corbels flanking a cylindrical plinth decorated with classical ornament, below gilt, draped female figures representing the Three Graces with cascading roses, their arms held aloft and supporting a round, patinated case with hemispheric bottom, gilt rings with roman and arabic numeral, rectangular white enamel cartouches, and surmounted by a dome with seated figure of Cupid, his right hand holding an arrow indicating the time, driven by an eight day time and strike movement with lever platform concealed in the base

**Condition:** case dirty and with minor losses to gilding, figures with freckles, one minute cartouche with crack, movement running and striking. The clock is patterned on an 18th century model by Francois Vion, for Jeanne Becu, Comtesse du Barry, and is held at the Palace de Fontainebleau. See Pierre Kjellberg "Encyclopedie de La Pendule Francaise", page 298, fig. B. See also John Moran, 7/30/16, lot 1199.

**\$5000-\$7000**  
 Circa late 19th c 20.75in x 6.75in x 6.75in





**439**

France, a monumental late 19th century French cartel clock after a design by Jacques Caffieri, the gilt bronze case surmounted by a sunburst behind a figure of cupid with doves and chariot above a roman numeral white enamel dial with gilt, fretted and engraved hands, and signed "Fand Berthout a Paris", the base with a figure of Cupid covering a sleeping Venus above a central leaf and scroll, and case sides with symmetrical acanthus leaf ornament, two train brass movement with large barrels striking the hours and half hour on a bell, now mounted to a velvet covered board with heavy iron ring for hanging, dimensions do not include the mounting board

**Condition:** case good, dirty and with localized verdigris, some components loose, dial with filled loss at 2:00 and a large filled loss at 5:00, movement ticks and strikes, end of center arbor broken off. Purchased by the consignor at Christies, New York, sale No. 1222, 4/24/2003, lot 281

**\$4000-\$6000** Circa 1890 42in x 19in x 8in



**440**

France, a large, early 20th century figural striking torsion pendulum clock, the patinated female figure standing atop a wheel in the clouds and with a putto at her feet, her head cocked and holding a cornucopia in her left hand, the right arm held aloft and supporting the torsion pendulum with hollow, polished and lacquered brass tube with regulation apparatus, above a sphere with roman numerals, shuttered winding holes, and engraved lyre form hands, the sphere containing an eight day, two train movement striking the hours and half hour on a bell, all resting on a molded, break front griotte marble base with gilt feet and central plaque reading "La Fortune Exposition 1900 par Aug. Moreau"

**Condition:** dirty, base with scattered tiny flakes, base with minor loss at rear right foot, finishes on the sculpture with minor wear and minor losses, putto a bit loose, lacquer on polished brass components with minor losses and with tarnish in those areas, winding shutters may be replacements, running and striking

**\$3500-\$5500** Circa 1910 38in x 12in x 19in





**441**

France, a good Charles X gilt and patinated bronze lyre form mystery clock, the patinated, stepped base on gilt feet, the transitions with gilt, foliate moldings below a lyre form frame, the curved lower portion supporting a pair of columns, the capitals with honeysuckle and palmette ornament topped by flowers and fruit, and flanking a central bust of Apollo, the swinging clock with knife edge suspended bimetallic gridiron pendulum having temperature change indication, the gilt, roman numeral dial with decorative center, small seconds below 12:00, blued steel Breguet style hands, and oak leaf and acorn pattern bezel, eight day, two train movement striking the hour and half hour on a bell

**Condition:** dirty, gilt and patinated surfaces good, case with minor, localized corrosion, dial with minor losses to numerals, signature on dial illegible, hands with minor oxide, pendulum components with minor oxide, temperature change pointer broken, temperature change scale tarnished, crutch impulse pin repaired, movement very dirty, running and striking, needs service

**\$3000-\$4000** Circa 1830 24.5in x 8.5in x 6.5in



**442**

France, a good late 19th century bronze bull clock, the gilt base with foliage and C scroll feet supporting a patinated bull bearing a cylindrical clock case, the bezel with foliate ornament, case sides with floral pendant drops, and surmounted by a gilt figure of cupid before a large scallop shell, gilt dial with twelve roman numeral white enamel cartouches and blued steel hands, with eight day, two train pendule de Paris movement striking the hours and half hour on a bell

**Condition:** dirty, gilt and patinated surfaces good, figure of cupid may have originally held an object in his left hand, dial and hands good, rear door with hinge joint separated from bezel and loose glass, movement ticks and strikes, lacking pendulum

**\$2000-\$3000** Circa 1890 24in x 18in x 7.25in





443

France, a good late 19th century Louis XV style elephant clock, the gilt base in the rococo style with scrolling foliage and shells on a conforming wooden base supporting a patinated Asian elephant with gilt saddle cloth and bearing a cylindrical clock case surmounted by a seated mahout, gilt faux repousse dial with twelve roman numeral white enamel cartouches and blued steel hands, eight day, two train pendule de Paris movement striking the hours and half hour on a bell

**Condition:** dirty, wooden base good, lacking gilding, minor localized verdigris, patinated finish on elephant good, dial with minor corrosion, hands with oxide, pierced rear cover with a few breaks, movement dirty, ticks and strikes, needs service

**\$1500-\$2000** Circa 1890 22in x 18in x 10in



444

Andre Romain Guilmet, Paris, a good late 19th century figural swinging mystery clock, the patinated spelter, classically inspired standing female figure with arms raised above her head and supporting a decorative, scroll ornamented suspension frame for the gridiron style pendulum, the spherical silver bob with gilt roman numerals, patinated brass hands, and containing the eight day timepiece movement with Guilmet's modifications, all resting on a polished brass and griotte marble base, the front with plaque marked "Abeille Par J. Causse (Statuaire)".

**Condition:** figure with tight crack at rear of left shoulder, minor, localized corrosion, one suspension bracket thumbscrew broken, suspension bracket with old repair, upper suspension incorrect, pendulum components originally nickel plated, now lacking plating, sphere with discoloration, movement running

**\$3000-\$4000**

Circa 1890 26.5in x 7.5in x 10.25in





**445**

France, a swinging mystery clock featuring a patinated spelter sculpture of young couple seated on a swing suspended from two trees with climbing vines, spherical green patinated clock case with applied roman numerals and gilt Louis XV hands and containing an eight day, time only movement, all resting on a green onyx base resting on naturalistic gilt feet, and with engraved plaque marked "Idylle Printaniere Par Geo Maxim", the sculpture also signed "Geo. Maxim" on the right side of base

**\$2800-\$3800** Circa 1900 33.5in x 14.5in x 10.75in



**446**

Andre Romain Guilmet, Paris, a patinated spelter and black marble mystery clock, the break front base with half round ends, ornamental skirt and scroll feet, and with central cast trophy representing the arts and sciences, trapezoidal clock case with decorative handles and flanked by two young students, all surmounted by a figure of a man in Renaissance era costume, a globe in his left hand, his right hand held aloft and suspending the pendulum with thick glass bob, impulsed through the nearly imperceptible movement of the base on which he stands, roman numeral white enamel dial with blued steel distaff hands, eight day, two train time and strike movement with crank and stirrup escapement, the back plate numbered 4704

**\$2500-\$3500** Circa 1890 32.5in x 20in x 9.5in



**447**

France, a very large late 19th century French patinated spelter swinging clock titled "The Dawn of Law and Freedom", signed E. Picault, the winged female figure standing on a semi spherical mound with two lion masks, a rising sun behind her feet, and a square base marked "L'Aurore du Droit et de la Liberte", olive and oak branches at her waist, with breastplate having a winged lion mask below a medallion marked "LEX", and with helmet surmounted by a gryphon ornament, her left arm supporting a tablet resting on her left hip marked "Jus Est Libertas", her right arm held aloft and supporting the compound pendulum, the eight day timepiece movement contained in the upper blue sphere with roman numerals and ornate pierced and engraved hands above a gridiron style pendulum with spherical blue painted bob, the movement and pendulum marked "SEFIA", all resting on a verde antico plinth

**\$2000-\$3000** Circa 1900 47in x 19in x 17in



**448**

Lebaury a Paris, a good French Empire gilt and patinated bronze figural mantel clock, the stepped, patinated base on anthemion ornamented paw feet, surbase with gilt heart and flower decorated molding and mounted with three interlocking wreaths and flanking swords, surmounted by a patinated, winged male figure, studying a gilt scroll atop the architectural clock enclosure, the base and cornice with foliate ornamented moldings, and the front with torches and suspended festoon, signed, gilt roman numeral dial with blued steel Breguet style hands, eight day, two train pendule de Paris movement with silk thread suspension, striking the hours and half hour on a bell, the back plate signed "Hemon a Paris"

**\$2500-\$3500** Circa 1820 24.5in x 18in x 9in



449

J.C. Cailly and P.J. Eude, France, a good mid 19th century mantel clock with rocking ship automata, the ebonized case on gilt, scallop shell feet, the base with heavy foliate mounts and central scallop shell, the upper section with ebony moldings, incurved sides, and corners with large dolphin mounts flanking the roman numeral silvered dial with cattail wreath bezel and blued steel hands, eight day, two train pendule de Paris movement with silk thread suspension, striking the hours and half hour on a bell, all surmounted by a rocking ship on a turbulent sea, with cast, imitation rockwork surround with lighthouse, the scene animated by a spring driven clockwork motor

\$2000-\$3000

Circa 1850 19.5in x 15in x 6.5in



450

V. Billiot & Roblin, Paris, an unusual late 19th century chryselephantine figural mantel clock featuring Diana, the molded, break front white marble base on toupie feet and with gilt mounts in the neoclassical style supporting a gilt case, the sides with fluted corbels and the front with oak branches on a matted ground, and surmounted by a gilt and ivory seated figure of Diana, her left hand with bow, and her right game bird, roman numeral gilt dial with engraved center and blued steel Breguet hands, signed eight day, two train pendule de Paris movement with Brocot escapement, striking the hours and half hour on a bell

\$1000-\$1500

Circa late 19th c 14.5in x 9in x 4.5in



451

France, a very large late 19th century French patinated spelter figural clock signed H. Dumaige, the classically inspired standing female figure on a molded hexagonal plinth with guilloche and Vitruvian wave ornament, her arms holding a spherical patinated clock case above her head, the case top with strap ornament terminating at either side in scrolls with flowerheads, and surmounted by a central finial, gilt faux repousse dial with roman numeral white enamel cartouches and blued steel hands, eight day, two train pendule de Paris movement striking the hours and half hour on a bell

\$1800-\$2500 Circa 1880 44in x 10.5in x 11.5in



452

Austria, an early 19th century rack clock featuring the Habsburg imperial eagle, the movement with verge escapement, of three day duration, and contained in a conforming lead enclosure, the engraved brass dial in the form of the Habsburg imperial eagle, clutching a sword, scepter, and globus cruciger, the imperial crown hovering just above the addorsed heads, silvered roman numeral chapter ring with subsidiary dials showing the day and date, and an aperture just above the center arbor displaying the age and phases of the moon, with blued steel hands and cowtail pendulum, all sliding on a toothed brass rack with large ring for hanging, and scroll foot with iron stabilizers

\$1000-\$1500 Circa early 19th c 29.5in x 9.5in x 2.5in





# SCHMITT HORAN & CO.

## *Seeking Fine Consignments*

Contact Us for a Confidential Appraisal

Spaulding & Co.

Chicago.

**Sold \$42,000**

*April 28, 2024*

A minute repeating split second  
chronograph with perpetual  
calendar by C.H. Meylan







**453**

Higgs and Diego Evans, London, for the Spanish market, a good late 19th century quarter chiming musical table clock with automata, mahogany veneered oak case having a base with fretted brass skirt and foliate ornamented scroll feet below a deep cavetto molding with swag and oval mounts, the door with glazed break arch and fabric backed cast spandrels, stop chamfered corners with caryatid and floral drop mounts, the sides with carrying handles and cast, fabric backed frets with central sunburst mask, and bell top above a plinth with cast, fretted frieze, and five urn and flame finials, break arch dial plate with roman numeral silvered dial having an engraved center with cabin, hills, palm tree, sailboat, and half sun at the horizon, pierced and engraved brass hands, brass spandrels, and subsidiary dials for tune selection and music/ silence, the arch with an automated fiddler and dancing gent before a landscape with a couple looking on, and behind a river with various automated watercraft, the action commencing at the quarters with the music, signed three train, hour striking fusee movement with nicely engraved back plate, cocks, and mounting brackets, verge escapement, bob pendulum, and 3.5in cylinder with eight bell chiming at the quarters, and playing four tunes on ten bells, with original paper label on the interior of the case bottom

**\$10000-\$15000**

*Circa 1775 29.25in x 16in x 11.25in*





**454**

England, a monumental mid-19th century Victorian three train skeleton clock, the gilt fusee movement with thick, matte finish scroll frames, six turned baluster form pillars, wheels with well executed five and six spoke crossings, Graham dead beat escapement, and Harrison's maintaining power, chiming the quarters on eight bells, and striking the hour on a larger ninth bell, the frames resting on four plinths with floral and foliate engraving, beautifully fretted and engraved dial with roman numeral cartouches and engraved gilt brass hands, all on a carved and molded wooden base with oval dome having winding arbors just below the molded top, thereby negating the need to regularly remove the dome, the transmission rods partially concealed by a fretted screen

**\$20000-\$25000**

*Circa mid 19th c 34.5in x 21in x 12in*





**455**

Dale Christensen, a late 20th century reproduction glass wheel skeleton clock after James Edwards of Stourbridge, the clock with four wheel fusee movement, recoil escapement, and wheels with cut glass centers, roman numeral glass dial with blued steel hands, and brass pendulum containing a cut glass bob, resting on a wooden base with figured mahogany veneers and glass dome, a sliding panel at the front providing access to the winding arbor and mainspring barrel, from an edition of 25

**\$3000-\$5000** Circa 1975 24.25in x 15.75in x 12in



**456**

Attributed to Evans, Handsworth, a good mid 19th century Sir Walter Scott memorial two train skeleton clock, the pierced frames based on the design of the monument erected in Edinburgh to commemorate the Scottish poet, with gilt figures of Scott and his dog placed beneath the center of the front frame, the fusee movement with recoil escapement, wheel work with six spoke crossings, rack striking on a large gong, and Evans compensated pendulum with wooden rod and cylindrical pewter bob, roman numeral silvered open work dial with blued steel club hands, all on an oval white marble base, now contained in a well made mahogany display case with five thick beveled glasses

**\$2600-\$3600** Circa 19th c 26.25in x 15.25in x 11in





**457**

France, a mid 19th century pillar style skeleton clock for the Ottoman market, the gilt case with portico form base having foliate ornamented molding, four fluted columns with laurel ornamented bases and Corinthian capitals below an egg and dart molded reverse break front top, surmounted by a 15 day, turret clock style, horizontal two train movement with Brocot escapement, regulated by a gridiron pendulum, resting on turned columns, and striking the hours and half hour on a bell, the hammer with articulated linkage, Turkish numeral white enamel dial with open center and blued steel hands, all on a line inlaid, ebonized, rounded rectangular base with conforming dome

**\$2500-\$3500** Circa 1850 27.25in x 13in x 8.5in



**458**

Joseph Penlington, Liverpool, a good late 19th century bracket clock, the ebonized case with gilt paw feet and foliate molded base, the front with stop chamfered corners with caryatid mounts above floral pendants flanking an acanthus ornamented arched door and gilt spandrels, the sides with heavy carrying handles and gilt, baroque frets, and bell top with floral festoons and pineapple finial, composite dial with matted center and roman numeral silvered chapter ring, gilt spandrels, and subsidiary dials in the arch for regulation and chime control, blued steel serpentine hands, substantial three train fusee movement with recoil escapement, with quarter chiming on eight bells or Westminster on four gongs, and counting the hours on a larger, fifth gong

**\$2500-\$3500** Circa 1885 28.5in x 16in x 11.5in



**459**

Lenzkirch, Germany, Model 676 "The Mermaid Clock", walnut case with ornate bronze baroque ornaments, eight day time and gong strike spring driven movement, serial #640144

**\$3000-\$4000**

Circa 1899 43in x 14in x 6.5in



**460**

Lenzkirch, Germany, a Symphonion hanging musical clock, with walnut veneered case, eight day time and strike spring driven movement featuring an added lever that rises and falls on the hour to actuate the Schutz Marke single comb music box, playing a 30 cm disc after the hour strike or on demand, serial 201486, movement serial # 923372

**\$1500-\$3000**

Circa 1895 33in x 14in x 8.5in





#### 461

Ithaca Calendar Clock Co., Ithaca, N.Y., "No. 1 Regulator Sweep", hanging jeweler's regulator in a walnut case with carved crest and bottom, papered metal dials, eight day, time only movement driven by two cast iron weights, with sweep seconds, perpetual calendar and a gridiron nickel plated pendulum, serial #3691 and dated 5/87

**Condition:** The case signed in pencil with serial number and manufacture date, old rubbed down finish, gold leafed "REGULATOR" on lower glass restored, one finial a professional replacement, the dial mask with minor repairs and restoration; original dials with minor losses and touch up; original pendulum and cast iron weights. A very nice example.

**\$8000-\$12000** Circa 1887 73in x 21in x 12in



#### 462

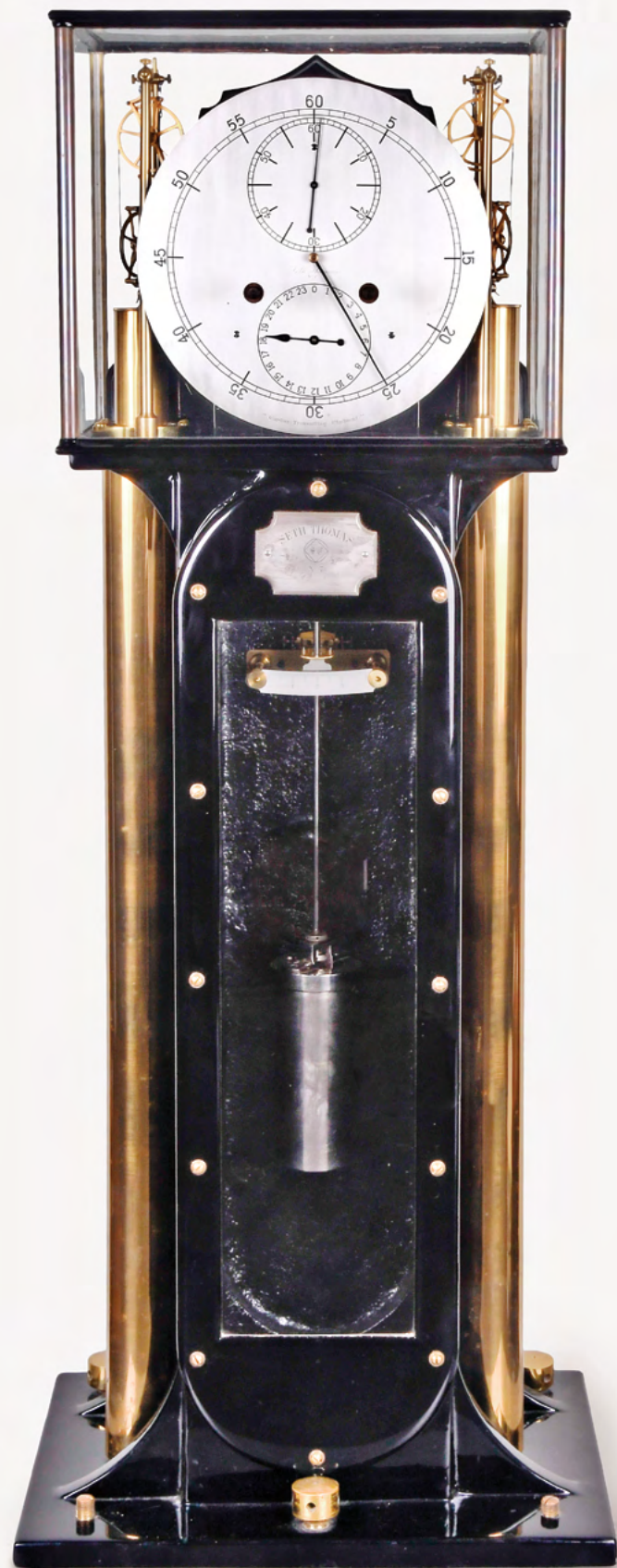
E. Howard & Co., Boston, Mass, "No. 86A Regulator" hanging clock in an oak case, 12 inch arabic numeral silvered brass dial, open diamond form hands, and signed eight day weight driven brass timepiece movement with maintaining power, dead beat escapement and brass pendulum bob

**Condition:** oak case in nice condition with an original finish with a few abrasions on the edges of the top crest, door glass replaced, upper glass original, dial with wear and rubbed loss to silvering, original blued steel hands, pendulum rod in cherry with damascened pendulum bob in nice condition with a few small surface spots, movement signed and marked #1, inside case stamped 12:1894, period weight included. The 86a is an iteration of the larger 86 model with a different movement and a foot shorter, this version was offered to provide the same elegance of the original but for tighter spaces and budgets, this model is very hard to come by.

**\$4000-\$6000** Circa 1900 65in x 21.25in x 9in



# SCHMITT HORAN & CO.



*Seeking Fine Consignments*

Contact Us for a  
Confidential Appraisal

*sales@schmitt-horan.com*  
*603.432.2237*

*A fine and rare  
late 19th century  
Seth Thomas  
month going standing  
Precision Clock*

**Sold \$312,000**  
*November 2, 2024*



**463**

United States Clock Co., New York, N.Y., a rare hanging jeweler's regulator, the Renaissance revival style walnut case with large, central finial surmounting a molded, broken arch, burl walnut panels, applied moldings, brackets, and rosettes, and backboard with molded burl panel, 18in roman numeral painted metal dial with subsidiary seconds and blued steel spade hands, eight day, time only, weight driven brass A-frame movement with maintaining power and regulated by a mercury pendulum with two steel jars

**\$6000-\$8000** *Circa 1900 80in x 33in x 11in*



**464**

United States Clock Co., New York, N.Y., a rare hanging jeweler's regulator in a mid-size walnut case, roman numeral engraved and silvered brass dial, serpentine hands, and signed, eight day, weight driven, time only brass movement with mercury pendulum

**\$4000-\$6000** *Circa 1900 72in x 22.25in x 11.5in*





**465**

Ansonia Clock Co, New York, N.Y., a jeweler's standing "Regulator No. 11", the walnut and burl walnut veneer case with squat, paneled base below a trunk with arched, glazed door and flanking carved ornaments, and molded arch top with stylized carved keystone with Jenny Lind mask, 16 inch roman numeral silvered dial with sweep seconds and blued steel moon hands, and eight day, time only movement with pin wheel escapement, driven by a brass weight and with mercury compensated three jar pendulum

**Condition:** some minor scrapes and bruises to the case, lacking door lock, original finish intact with minor touch ups, balance of moldings, movement support, case trim base and top are original and in good condition; silvering on dial in good condition; movement is complete but needs service; original hands and brass weight, three jar mercury pendulum complete with faceted jars and mercury. As this lot contains hazardous materials, the buyer will be responsible for arranging safe transport from our facility.

**\$9000-\$12000** Circa 1880 111in x 37in x 14.5in



**466**

E. Howard & Co., Boston, Mass, a rare tall clock in a mahogany case with carved ornamentation and broken arch top, center finial, beveled glass trunk door, all resting on bracket feet, silvered brass dial with applied roman numerals, moon phase in arch, subsidiary seconds, eight day, two train movement driven by two brass weights

**Condition:** case in good condition, with an old finish, some dings in the hood base molding, original hands, dial glass and door beveled glass original, some tarnishing to the silvered dial

**\$4000-\$6000** Circa 1890 103.5in x 22.5in x 14in





#### 467

Germany, a mid 19th century Black Forest longcase organ clock, large mahogany veneered case, the base with bookmatched figured veneers, trunk with stop chamfered corners and door with figured veneer, and the gabled bonnet with ebonized pediment having "Der Cavalcatore" spelled out in gold leaf above two oil paintings on horizontal tin panels, the upper scene featuring a horseman in a landscape pursuing a bull, and the lower with a woman playing a harp for a seated, contemplative king, the figures flanking the 8 inch, roman numeral white enamel dial with typical iron Black Forest hands, the weight driven two train movement releasing the organ once per hour, the movement driving the bellows and one of two eight tune, 20 inch pinned wooden cylinders

**\$2000-\$3000** Circa mid 19th c 94in x 27in x 14in

#### 468

Benjamin Solliday, Sellersville, Penn., an early 19th century tall clock, with cherry and mahogany veneer case, William Jones painted dial, diamond form hands, and 30 hour, time and strike weight driven brass movement

**\$1800-\$2500** Circa 1830 91.5in x 18.5in x 11in

#### 469

England, a late 19th century dwarf tall clock in a 17th century style case, walnut and walnut burl veneer oak case with molded base, trunk door having lobed and star form contrasting wood inlays, the bonnet with ebonized Solomonic columns, pulvinated frieze and molded cornice, 7.25 inch composite dial with roman numeral silvered chapter ring and blued steel hands, eight day, two train weight driven movement with dead beat escapement, striking the hours on a bell, driven by two cast lead weights and wire rod pendulum with brass clad bob

**\$1500-\$2000** Circa late 19th c 62in x 13.25in x 8.5in

#### 470

Attributed to George M. Stevens Co., Boston, Mass., a small tower or street clock, with green painted, cast iron frame, the time only, weight driven movement with Graham deadbeat escapement and maintaining power, including motion work, two pulleys, weights and pendulum, similar to the Seth Thomas No. 2 street clock

**\$2500-\$3500**

Circa 1900 26in x 20in x 18in







**471**

Elmer Stennes, Weymouth, Mass., a girandole wall clock with mahogany and gilt case, painted metal dial with Curtis type hands, eight day weight driven brass movement, case stamped "68" & "23"

**\$2000-\$3000** Circa 1966 43.5in x 12.25in x 4.75in



**472**

Foster Campos, Pembroke, Mass., a hanging lyre clock with mahogany case, painted metal dial, and eight day, weight driven brass movement

**\$1800-\$2200** Circa 1978 40.5in x 11.5in x 4.25in





**473**

Charles Alvah Smith, Brattleboro, Vermont, a hanging clock with calendar, in a rectilinear cherry case with string inlay, roman numeral paper dial with ebonized hands, eight day, time only, weight driven wooden movement with month and date calendar aperture below 6 o'clock, wooden pendulum rod, bob, mounting bracket and cherry sheathed weight, signed behind the dial "April. - 1933" and "Charles Smith... No. 20"

**\$1400-\$1800** Circa 1933 14in x 7.5in x 5in



**474**

Gilbert Clock Co., Winsted, Conn., "3050 - Clock for the Optician", hanging clock, with wooden case, laminated poplar dial, spade hands, and spring driven eight day brass timepiece movement, clock dial painted in the manner of a human eye with matching pendulum bob

**\$1200-\$1800** Circa 1914 25in x 22in x 3.5in





**475**

Lewis E. Whiting, Saratoga Springs, NY, "Timby Solar Time Piece", eight day, spring driven, brass lever movement shelf clock designed and patented by Theodore R. Timby with clock movements typically made by Noah Pomerey, Bristol, Conn. or Laporte Hubbell, Bristol, Conn and terrestrial globe by Gilman Joslin. This timepiece is labeled No. 29 of the some 600 that were made and is in a walnut case.

**\$3000-\$4000** Circa 1863 27in x 15.5in x 5.5in



**476**

Ansonia Clock Co., New York, NY, "Double Figure Swing", swinging mantel clock, cast metal figures, paper on metal dial, spade hands, eight day, spring driven brass movement. This clock has the more desirable base.

**\$1000-\$1500** Circa 1901 25in x 14in x 7in





**477**  
 Chelsea Clock Co., Boston, Mass., for Tiffany & Co., New York, a rare "Commander" with 12 inch Special Grand dial mantel clock for Tiffany & Co., in a brass case mounted on a mahogany base, large dial with silvered chapter ring and raised arabic numerals, eight day, time and house strike, spring driven brass movement with jeweled lever escapement, serial #35376 on the movement and case.

**Condition:** case in very fine condition mounted on a refinished mahogany base, silvered brass dial has loss to the bluing on some of the numerals, fine scratches at the winding arbors, some wear to the silver finish and a few smudges to the silver at about 1 o'clock, original hands

**\$10000-\$12000** Circa 1908 19.25in x 18.75in x 7in





**478**

E. Howard & Co., Boston, Mass., "No. 59-10 Regulator" hanging clock, walnut and birds eye maple case, painted metal dial, diamond form hands, eight day, weight driven brass movement

**\$4000-\$6000** Circa 1880 56in x 18.75in x 7.25in



**479**

E. Howard & Co., Boston, "No. 58 Regulator-8" hanging clock in a walnut case with 8 inch painted metal dial, eight day, time only, weight driven movement with silver painted pendulum rod and a nickel plated damascened pendulum bob

**\$3000-\$5000** Circa 1900 40in x 12in x 4.75in

**480**

E. Howard & Co., Boston, Mass., a "No. 69" model hanging marine clock for Ashcroft Mfg. Co., 14.5 inch diameter bronze case with a 12 inch arabic numeral silvered dial signed "Ashcroft Mfg. Co. New York", eight day, time only, spring driven nickel plated movement, finely damascened and with lever escapement, serial #4159 on dial, serial #2571 on movement

**\$2500-\$3500** Circa 1895 14in x 14in x 4in

**481**

E. Howard & Co., Boston, Mass., "No. 8 Regulator", the figure eight style hanging clock in a walnut case, with painted metal dial, blued steel diamond hands, and eight day, weight driven brass movement, case is stamped 15.

**\$3000-\$4000** Circa 1874 45in x 15in x 5.5in







**482**

E. Howard & Co., Boston, Mass., "No. 9 Regulator", figure eight hanging clock, with walnut case, painted metal dial, moon hands, and eight day weight driven brass movement

**\$1800-\$2200** Circa 1874 37in x 12.5in x 4in



**483**

E. Howard & Co., Boston, Mass., "No. 10 Regulator" figure eight hanging clock with walnut case, painted metal dial, moon hands, and eight day, weight driven brass movement

**\$1000-\$1500** Circa 1874 33in x 11in x 5in





**484**  
Ithaca Calendar Clock Co., Ithaca, NY, a rare skeleton clock under glass oval dome, cast brass nickel plated dials and silver plated frames, moon hands, eight day, spring driven, time and strike movement with a H. B. Horton patented perpetual calendar mechanism

**Condition:** ebonized base in very good condition, dome with age and without cracks or chips, both dials in excellent condition with very light tarnishing between the numerals, original calendar drum labels with very minor loss, original moon hands, movement and dome base signed

**\$4000-\$6000** Circa 1886 16in x 10.5 x 7in





485

Ithaca Calendar Clock Co., Ithaca, NY, "No. 12 Hanging Kildare" calendar clock, mahogany case, black paper dials, maltese hands, E. N. Welch eight day, spring driven, time and strike movement with a patented perpetual H. B. Horton calendar mechanism

\$2500-\$3500 Circa 1880 32.5in x 13in x 6.75in



486

Ithaca Calendar Clock Co., Ithaca, NY, "No. 0 Bank" hanging calendar clock, walnut case with burl walnut side panels, paper dials, maltese hands, and E. N. Welch eight day two weight time only movement and a patented perpetual H. B. Horton calendar mechanism

\$2000-\$3000 Circa 1880 61in x 21.5in x 9.5in



487

Ithaca Calendar Clock Co, Ithaca, NY, "Hanging 5 1/2 Belgrade", calendar clock, with ash case, black paper dials, maltese hands, E. N. Welch 30 day spring driven double wind brass timepiece movement with a H. B. Horton patented perpetual calendar mechanism.

\$1500-\$2500 Circa 1880 36in x 14in x 7.5in



488

Ithaca Calendar Clock Co., Ithaca NY, "Large Iron Case" hanging calendar clock with paper dial, moon hands, eight day brass double wind timepiece movement by Laporte Hubbell and a patented perpetual calendar mechanism by H. B. Horton

\$1000-\$1500 Circa 1868 21in x 9.5in x 4in





**489**

F. Kroeber Clock Co., New York, N.Y., a miniature "Vienna Regulator No. 1" hanging clock in a walnut case with ebonized trim, finials, drops and rosettes, roman numeral two part white enamel dial, and eight day, two train, weight driven brass movement striking the hours on a gong, matching serial #'s 30016 on movement, pendulum suspension and mounting bracket

**\$1000-\$1500** Circa 1875 36in x 11.25in x 5in



**490**

F. Kroeber Clock Co., New York, N.Y., a miniature "Vienna Regulator No. 1" hanging clock in a walnut case with ebonized trim, finials, drops and rosettes, roman numeral two part white enamel dial, eight day, single train weight driven brass movement, matching serial #'s 20696 on movement, pendulum suspension and mounting bracket

**\$1000-\$1500** Circa 1875 36in x 11.5in x 5in



**491**

F. Kroeber Clock Co., New York, NY, "Noiseless Rotary No. 1" mantel clock under a dome on an ebonized wood case, roman numeral paper on metal dial, maltese hands, and eight day, spring driven brass movement with conical pendulum

**\$1200-\$1800** Circa 1895 24in x 11in x 11in



**492**

F. Kroeber Clock Co., New York, NY., "Noiseless Rotary No. 4" mantel clock with cast iron case, enameled dial, maltese hands, and eight day, time and strike spring driven brass movement with conical pendulum

**\$1000-\$1500** Circa 1882 23in x 11.25in x 7in





**493**

Seth Thomas Clock Co., Thomaston, Conn, "Jupiter" hanging clock, the oak case with burl panel, cast rosette and mask ornaments, painted metal dials, fleur de lis hands, and weight driven, time and strike eight day brass lyre movement with attached moon phase dial.

**\$2500-\$3500** Circa 1894 60in x 19in x 8in



**494**

Seth Thomas Clock Co, Thomaston, Conn, "Regulator No. 3" hanging clock with rosewood veneered case, painted metal dial, spade hands, and eight day weight driven brass movement with maintaining power

**\$1500-\$2000** Circa 1885 42in x 19.5in x 5.5in



**495**

Seth Thomas Clock Co., Thomaston, Conn, "Regulator No. 9" wall clock, walnut and walnut veneered case, painted metal dial, spade hands, eight day weight driven, timepiece movement with maintaining power

**\$1400-\$1800** Circa 1881 46.5in x 16.5in x 7.5in



**496**

Seth Thomas Clock Co., Plymouth Hollow, Conn, "Office Calendar No. 3" or "Peanut" hanging clock, rosewood veneered case, painted metal dials, S-T hands, eight day, spring driven double wind movement with a Mix Brothers patented perpetual calendar mechanism

**\$1200-\$1600** Circa 1863 23.25in x 11in x 4.25in





**497**

Seth Thomas Clock Co., Thomaston, Conn, "Regulator No. 6", hanging clock, with walnut case, painted metal dial, spade hands, and weight driven eight day timepiece movement with maintaining power

**\$1200-\$1600** Circa 1897 48in x 16.5in x 7.5in



**498**

Welch, Spring & Co., Forestville, Conn., "Gale Drop Calendar Model 1", in a rosewood case with painted metal dial, spade hands, and eight day, spring driven brass movement

**\$1500-\$2500** Circa 1871 30.25in x 16.5in x 4.75in



**499**

Welch, Spring & Co., Forestville, Conn, a miniature Patti VP No. 2 shelf clock, rosewood and rosewood veneer case with paper on metal dial, moon hands, and eight day, spring driven, time and strike brass movement

**\$1800-\$2500** Circa 1886 10.5in x 7.25in x 4in



**500**

Welch, Spring & Co., Forestville, Conn, a miniature Patti VP No. 2 shelf clock, rosewood and rosewood veneer case, paper on metal dial, moon hands, eight day, spring driven, time only, brass movement

**\$1800-\$2500** Circa 1886 10.5in x 7.25in x 4in



# Index

American Waltham Watch Co. 416-418, 420, 421  
Annular Clock 438  
Ansonia Clock Co. 465, 476  
Ashcroft Mfg. Co. 480  
Atmos Clock 429, 430  
Automata 449, 453  
Ball Watch Co. 424  
Batwing (Gruen) 413  
Bazart, Eugene 438  
Billiot & Roblin 450  
Black Forest 467  
Bracket Clock 458  
Breitling SA 412  
Bull Figural Clock 442  
Cailly, J.C. 449  
Calatrava (Patek, Philippe) 403, 405  
Calendar Clock 485-488, 496, 498  
Campos, Foster 472  
Carriage Clock 433  
Cartel Clock 439  
Cellini (Rolex) 408  
Chelsea Clock Co. 477  
Christensen, Dale 455  
Chronometer 425-426, 428  
Cie Generale de Radiologie 429  
Commander (Chelsea Clock Co.) 477  
Crescent St. (Waltham Watch Co.) 420, 421  
Deck Watch 427  
Donald, John 401  
Double Figure Swing (Ansonia Clock Co.) 476  
Electromechanical clock 431  
Elephant Figural Clock 443  
Elgin National Watch Co. 423, 426  
Eude, P.J. 449  
Figural Clock 448  
Flightmaster (Omega) 411  
French Industrial Series 435  
Gale Drop Calendar Model 1 (Welch, Spring & Co.) 498  
Geo. C. Shreve & Co. 433  
Gilbert Clock Co. William L. 474  
Girandole 471  
Golden Ellipse (Patek Philippe) 404  
Gruen 413  
Guilmet, Andre Romain 436, 437, 444, 446  
Hanging 5 1/2 Belgrade (Ithaca Calendar Clock Co.) 487  
Hatot, Leon 431  
Higgs & Diego Evans 453  
Howard & Co., E. 419, 462, 466, 478-483  
Ithaca Calendar Clock Co. 461, 484-488  
Jaeger, Edmond 427  
Jeweler's Regulator 461, 463, 464  
Jupiter (Seth Thomas Clock Co.) 493  
Kroeber Clock Co. 489-492  
Large Iron Case (Ithaca Calendar Clock Co.) 488  
LeCoultre 429, 430

Lenzkirch 459, 460  
Lyre Clock 472  
Mermaid Cock (Lenzkirch) 459  
Musical Clock 453, 460  
Mystery and Swinger 435-437, 441, 444, 445-447, 449, 476, 477  
No. 0 Bank (Ithaca Calendar Clock Co.) 486  
No. 1 Regulator Sweep (Ithaca Calendar Clock Co.) 461  
No. 8 Regulator (E. Howard & Co.) 481  
No. 9 Regulator (E. Howard & Co.) 482  
No. 10 Regulator (E. Howard & Co.) 483  
No. 12 Hanging Kildare (Ithaca Calendar Clock Co.) 485  
No. 58-8 Regulator (E. Howard & Co.) 479  
No. 59-10 Regulator (E. Howard & Co.) 478  
No. 69 Marine Clock (E. Howard & Co.) 480  
No. 86A Regulator (E. Howard & Co.) 462  
Noiseless Rotary No. 1 (F. Kroeber Clock Co.) 491  
Noiseless Rotary No. 4 (F. Kroeber Clock Co.) 492  
Oarsman Clock 437  
Office Calendar No. 3 (Seth Thomas Clock Co.) 496  
Omega Watch Co. 409, 411  
Organ Clock 467  
Oswald Uhrenfabrik 434  
Patek, Philippe & Co. 402, 404, 405, 414  
Patti VP No. 2 (Welch, Spring & Co.) 499, 500  
Peanut (Seth Thomas Clock Co.) 496  
Penlington, Joseph 458  
Regulator No. 3 (Seth Thomas Clock Co.) 494  
Regulator No. 6 (Seth Thomas Clock Co.) 497  
Regulator No. 9 (Seth Thomas Clock Co.) 495  
Regulator No. 11 (Ansonia Clock Co.) 465  
Rocking Ship 449  
Rolex Watch Co. 406, 408  
Seth Thomas Clock Co. 493-497  
Skeleton Clock 454-457, 484  
Smith, Charles Alvah 473  
Solliday, Benjamin 468  
Speedmaster Professional Mark II (Omega) 409  
Stennes, Elmer 471  
Stevens, George M. 470  
Street Clock 470  
Super Avenger (Beitling) 412  
Symphonion Clock, (Lenzkirch) 460  
Tiffany & Co. 430, 432, 477  
Timby Solar Time Piece 475  
Torsion Pendulum 440  
Tower Clock 470  
Tri Compax (Universal Geneve) 407  
United States Clock Co. 463, 464  
Universal Geneve 407  
Vacheron & Constantin 410  
Veritas (Elgin National Watch Co.) 423  
Vienna Regulator No. 1 (F. Kroeber Clock Co.) 489, 490  
Welch, Spring & Co. 498, 499, 500  
Whiting, Lewis E. 475  
Winnerl, Joseph Thaddaus 425

## Schmitt Horan & Co.

SALES TAX and BUYER's PREMIUM: You agree to pay the Buyer's Premium on every item purchased. The Buyer's Premium is a percentage of the hammer price of each item added to the sale total for that item. There is NO sales tax in New Hampshire. The Buyer's Premium is 20% of the hammer price.

SPECIAL EVENT: The special event portion of the May 4 auction (Lots 1 - 400) will not offer phone bidding, internet bidding, nor absentee bidding. Bidder must be in attendance or have someone represent them in attendance to bid. See list of recommended Buyer's Agents below for suggestions.

LIVE BIDDING: The May 4 auction is open to the public and in-person attendance is allowed and encouraged. On items after lot 405 we also offer several alternatives to attending in person, including our own live bidding software at bids.schmitthoran.com. You may also bid live at www.invaluable.com or www.liveauctioneers.com or www.bidsquare.com. The total Buyer's Premium for third party platforms purchases is 28%, which includes an 8% fee charged by the third party. Because of the inherent delay in and the remote nature of online bidding, any item sold through any of the various online platforms may be reopened at the discretion of the auctioneer at anytime during the auction.

PHONE BIDS: On items after lot 401 you may register to bid via telephone. It is necessary to contact us at least to 72 hours prior to the auction to arrange for phone bidding. Pre-registration is required.

ABSENTEE or LEFT BIDS: In all cases, a left or absentee bid will be executed for as low a price as possible. Many absentee bids lose by only one bid, a frustration that can be reduced if a live person has authority to bid "one more time". Therefore, we offer **PLUS ONE (+1)** bidding format to allow our absentee bidders to be more competitive, contact us for details. Bid forms are available on our web page or in the rear of the catalog. Bids submitted online, by fax, snail mail or e-mail to: **bids@schmitt-horan.com** must be received no later than 48 hours prior to the start of the auction. Absentee bidding and phone bidding services are provided by Schmitt Horan & Co. as a courtesy to our clients. Schmitt Horan & Co. cannot be held responsible or liable for failure to receive or execute absentee bids.

BUYER'S AGENT: We are increasing access to live bidding agents, who can independently execute your bids the day of the sale. This service provides an independent set of eyes to validate a potential purchase or to provide flexibility in spending needs. Other additional services provided by these agents include careful packing and flexible delivery options. Buyer's Agents generally charge a commission on each successful sale, which they will discuss with you prior to executing your bids.

Agents available for our May 4, 2025 sale are listed below:  
**Clocks, Watches & Antiques**  
John Kovacik jkovacik@verizon.net or (315) 823-1205

PAYMENT FOR SUCCESSFUL BIDS: We will normally notify successful bidders within three business days of the auction. We use e-mail to notify bidders and postal mail if a client does not have e-mail available. Personal checks drawn on a U.S. bank are acceptable. We also accept VISA, Mastercard, Discover, American Express and Paypal, all subject to an additional 3% processing fee. Note that shipping charges are extra and will be billed by Schmitt Horan & Co. or a third party at the time of shipment. Payment is due on receipt of invoice, and no later than 15 days from the date of the auction. Items not paid for within the 15 days from the date of the auction will be charged a 2% monthly interest rate on the balance due. Large international transactions may be performed via wire transfer. Details available upon request.

ESTIMATES and RESERVES: After each description, we have indicated a high and low dollar estimate that should be used as a general guide. The final price may vary considerably from these estimates. There are few items in this sale with a reserve, or confidential minimum selling price, established with the consignor or vendor. Items failing to sell will be noted in the results sheet as \$0.00.

## General Terms & Conditions

PHOTOGRAPHS: Please note, some items when photographed, particularly watches, may have shadows, reflections or other marks that are a result of the photographic process and are not permanent. Both buyer and seller grant unrestricted use of auction photographs and prices realized to Schmitt Horan, LiveAuctioneers.com, Invaluable.com and Bidsquare.com.

ITEM DESCRIPTIONS & CONDITIONS: Employees do their best to aid and assist the customer, however any statements made by Schmitt Horan & Co. employees, agents or contractors are not considered a definitive record of what is being sold. The final record of what is being sold in a lot under any and all circumstances is the catalog provided by Schmitt Horan & Co., both printed and online. If there is a discrepancy between employee statements and the catalog or other errors on third-party websites, the catalog listed at https://bids.schmitthoran.com is the final and ultimate legal record of what is offered in the lot. We do our best to identify restoration, alteration or other condition issues in the condition report. We shall not be held liable for failure to do so. **IT IS THE RESPONSIBILITY OF THE BUYER TO CONFIRM CONDITION PRIOR TO BIDDING. Condition reports are subject to change up to the moment the lot is sold and it is the responsibility of the buyer to review any changes or updates to the condition report until that time.** If the lot description includes the words "as found" or "as is" the item is sold without any guarantees. **All lots containing multiple items are considered in "AS IS" condition and cannot be returned.** General maintenance items such as broken suspension springs, broken or missing weight cords, & missing keys are not mentioned. Most clocks and watches will require cleaning and service after purchase. All costs associated with this are the responsibility of the client. Dimensions are approximate.

ITEMS & ACCESSORIES: It is the buyer's responsibility to verify that he / she has received accessories that may be separate when taking possession of their merchandise. Items purchased by bidders off site are not available for pick up during the sale at the auction hall.

SHIPPING: We use outside companies to ship clocks that provides services worldwide: Please see Vendor Section for details. We are often able to offer "in-house" shipping on watches.

PICK UP IN LIEU OF SHIPPING: Purchases by absentee bidders, phone bidders or internet bidders may be picked up no sooner than 3 business days following the sale. You or your agent may arrange pickup by appointment at our office in Candia, NH. Please plan to settle your account at time of pick up. Items left in our custody for over 30 days from the date of the auction will be charged a storage fee of \$25 per item per week, which must be paid before items are released. We shall not be held liable for damage occurring to any item left in our custody after 30 days from the date of the auction.

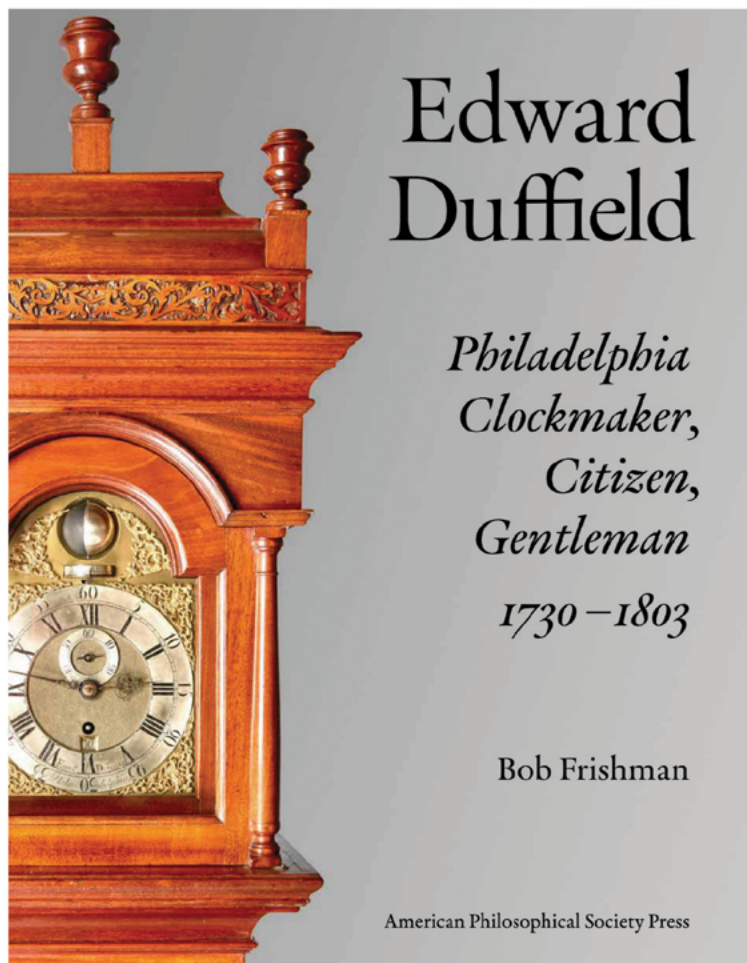
RETURNS AND REFUNDS: Returns will be considered only for items that do not conform to catalog description. **UNDER NO CIRCUMSTANCES WILL RETURNS BE ACCEPTED OR REFUNDS ISSUED LATER THAN 30 DAYS AFTER THE AUCTION.** If there is a problem and a refund or adjustment is requested we ask to be notified within one week of the auction and require to be notified ABSOLUTELY no later than 30 days of the auction or 7 business days after the item(s) are delivered, whichever is earliest, no exceptions. Transit damage alone is not sufficient reason to return an item. We will assist in claims against transport companies.

DEFAULT and LITIGATION: **REGISTRATION TO BID INDICATES ACCEPTANCE BY THE BIDDER OF THESE TERMS ENFORCEABLE AS A NEW HAMPSHIRE CONTRACT.** Schmitt Horan & Co. will not be liable for default by either the buyer, consignor or the vendor. No purchase shall be claimed or removed until paid for in full. Schmitt Horan & Co. reserves the right to refuse to accept bids made by a defaulting buyer at any future auction and to collect all costs and attorney's fees from the buyer associated with litigation and storage involving default. All legal disputes arising from this contract shall be disputed, litigated or mediated under New Hampshire law in the State of New Hampshire. All consignors or vendors are represented in our records by either name or a code directly associated with that name and are also a legal party to this contract.









# NEW BOOK BY BOB FRISHMAN

**256 PAGES**  
**227 ILLUSTRATIONS**  
**HARDCOVER W/DUST JACKET**

**71 DOCUMENTED DUFFIELD  
CLOCKS AND INSTRUMENTS**

**JUST \$60**  
**ORDER ON AMAZON**

**SIGNED COPY FROM  
AUTHOR**

**\$75 POSTPAID**  
**WWW.EDWARDDUFFIELD.COM**

"Far more than a treatise on pre-industrial horological timekeeping, this book tells the compelling stories of a man, a city, and an era, while deepening our appreciation for Duffield's stately sentinels — often a colonial American family's most valuable possession — and the times and places in which their makers lived." *University of Pennsylvania Press*

"With over forty years as a horologist and some 140 published articles, Bob Frishman is abundantly qualified to relate Duffield's story." — *Antiquarian Horology*

"[It's] refreshing that the author fully integrated the life of Edward Duffield into the historical events of the time...if you enjoy reading about American history or colonial clockmaking, this book should be in your library." — *Watch & Clock Bulletin*

"In *Edward Duffield*, Frishman offers us a truly definitive work, not just on an individual clockmaker, but on the world in which that man lived. It draws connections across many aspects of the horological, political, commercial, social and religious life of the earliest years of the nation, and is highly recommended reading for anyone who is interested in horological or American history — or both!" — *Horological Times*

"With its first-rate photography and long and useful bibliography, it should be on every library shelf." — *Maine Antique Digest*