



PO Box 31 Candia, NH 03034  
sales@schmitt-horan.com  
603.432.2237

Online Bidding

[bids.schmitt-horan.com](https://bids.schmitt-horan.com)  
[www.liveauctioneers.com](https://www.liveauctioneers.com)  
[www.invaluable.com](https://www.invaluable.com)  
[www.bidsquare.com](https://www.bidsquare.com)

## Saturday, May 6th 2023

### Starting at 10am

**Lots 1 - 343 Special Event**

*Discovery Sale / Live Bidding Only*

### Starting at 1:30pm

**Lots 344 - 699 Clocks, Watches, Antiques**

*Absentee, Phone, Online, Live Bidding*

### Public Preview

**Friday, May 5 at 3pm to 6pm**

*Reception to follow at 6pm*

**Saturday, May 6 at 8am to 9:45am**

Preview Also By Appointment

April 26th to May 5th

Candia, New Hampshire

Welcome to Schmitt Horan & Co.'s Spring 2023 live auction event hosted at our new gallery in Candia, New Hampshire. Lots 1 - 342 are an in-person bidding event only. Lots 343 - 699 will offer all bidding methods including in-person, online, phone and absentee.

Auction Location  
**80 Raymond Rd**  
**Candia, NH 03034**

There will be a reception to follow preview on Friday, May 5 at 6pm and we invite all participants to attend. Light refreshments and hors d'oeuvres will be served.

We have an active social media presence on Facebook, Instagram, Twitter and Youtube. Please visit [schmitt-horan.com](https://schmitt-horan.com) to follow us or view additional detail images and condition reports not shown in this catalog.

For instructions on bidding, please see terms and conditions at the rear of catalog.

Daniel Horan  
NH Auctioneer License No. 5060

### SUMMARY OF TERMS OF SALE

**REGISTRATION** Is required prior to the sale for all bidders, including online, internet, phone and absentee.

**CONDITION OF LOTS** We describe and evaluate each lot to the best of our ability. The condition and authenticity should be confirmed by personal examination. The final decision to bid, and the amount to bid is at the bidder's discretion and liability.

**ITEMS PURCHASED** Successful bidders must remit payment within 10 business days of close of the auction. It is the buyer's responsibility to verify that he / she has received accessories that may be separate when taking possession of their merchandise.

**BUYER'S PREMIUM** Buyers pay 20% premium on the hammer price. Paypal and all major credit cards are accepted. Invaluable, Live Auctioneers and Bidsquare bidders pay an additional fee of 5%, as well as the 20% buyer's premium.

**PAYMENT** Acceptable forms of payment include pre-approved personal checks, cash, Paypal, and all major credit cards: VISA, Mastercard, American Express & Discover.



## Dedication

Gerald "Jerry" Waelti, was born in 1938 in Monroe, Wisconsin and raised on the family farm in Juda. After graduating from Juda High School, he attended UW Platteville to earn a degree in civil engineering. He continued his education to receive his Masters from UW Madison.

It was during those college days when he met his wife Carolyn "Kay" Carpenter, at a New Year's Eve dance. After their wedding in 1961, they moved to Waukesha, WI, where he worked for the State of Wisconsin as a Project Manager and Design Squad Leader. In 1980, Jerry and his family moved to Delavan where he served as the Walworth County Highway Commissioner and as the Director of the Wisconsin Asphalt Pavement Association.

Besides his love of family, church and music, Jerry was an avid clock and antique collector. His large collection included everything from grandfather clocks and Black Forest carvings to automatons and classic cars. He was a true collector in every sense of the word - there was never just one of anything! Jerry passed in 2021 and will be greatly missed.

Lot 392



# CONTENTS

1	EVENT ANNOUNCEMENTS	63	AMERICAN HANGING CLOCKS
4	MECHANICAL MUSIC & GAMING	69	DECK WATCHES & CHRONOMETERS
6	CARRIAGE & DESK CLOCKS	72	AMERICAN POCKET WATCHES
13	JAPANESE CLOCKS	74	WRIST WATCHES
20	FRENCH MANTEL CLOCKS	75	EUROPEAN POCKET WATCHES
26	BLACK FOREST & GERMAN CLOCKS	89	TERMS AND CONDITIONS
36	EUROPEAN HANGING CLOCKS	90	DELANEY ANTIQUE CLOCKS
40	SKELETON & BRACKET CLOCKS	92	VENDOR INFORMATION
44	PRECISION HANGING REGULATORS	93	INDEX
53	TALL CLOCKS & REGULATORS	94	BID FORM
59	AMERICAN MANTEL CLOCKS		

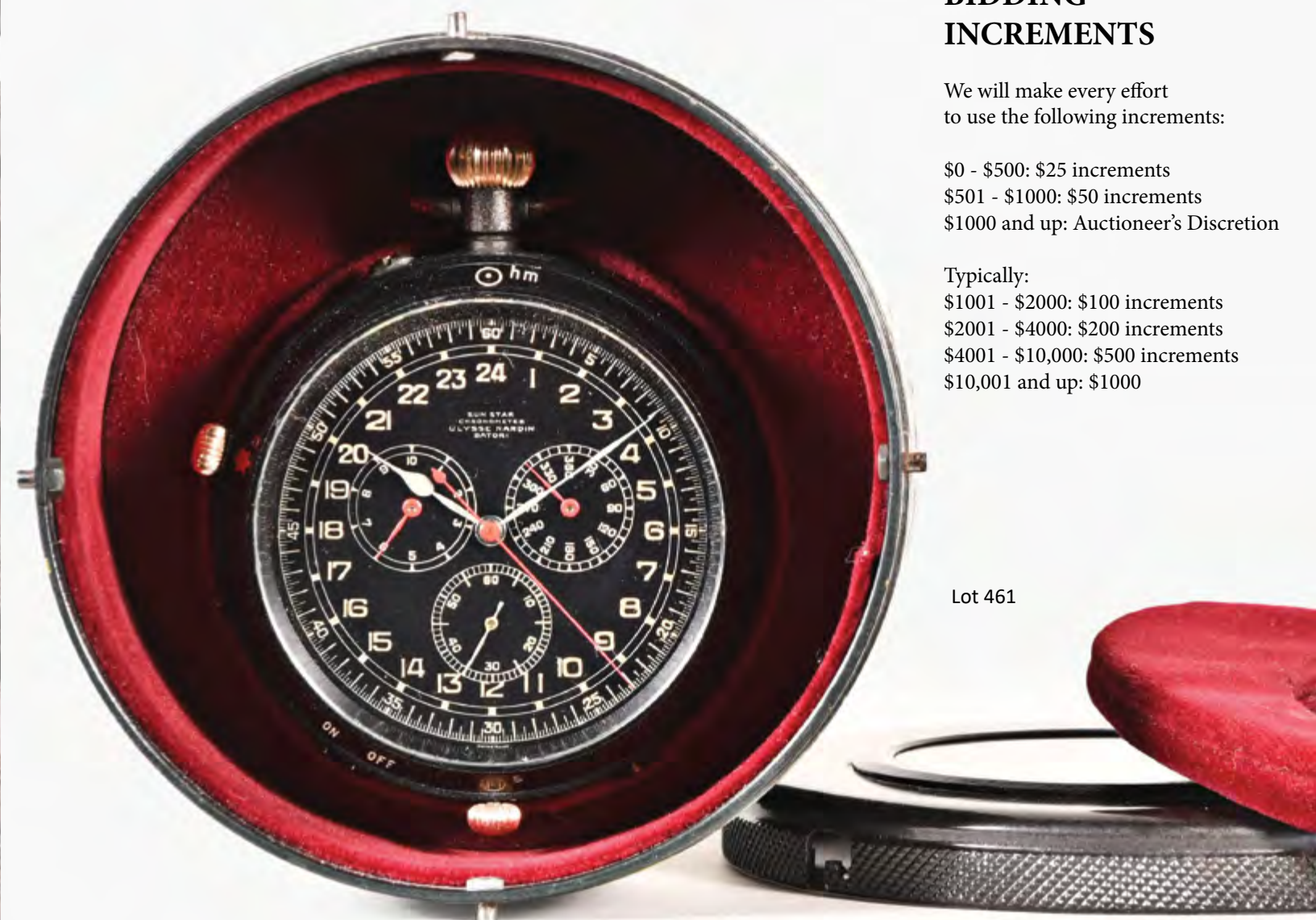
## BIDDING INCREMENTS

We will make every effort to use the following increments:

\$0 - \$500: \$25 increments  
 \$501 - \$1000: \$50 increments  
 \$1000 and up: Auctioneer's Discretion

Typically:  
 \$1001 - \$2000: \$100 increments  
 \$2001 - \$4000: \$200 increments  
 \$4001 - \$10,000: \$500 increments  
 \$10,001 and up: \$1000

Lot 461





**343**  
 J.P. Seeburg Piano Company, Chicago, Illinois "Model KT or Seeburg Eagle" nickelodeon orchestrion with cabinet piano, castanets, triangle, tambourine and xylophone in a painted wooden cabinet with half columns and corinthian capitals flanking lower cabinet, gold highlights and art glass spread eagle, playing type "G" or "4X" rolls, nickel operated mechanism, serial #157922

**Condition:** case has been repainted and a later "WURLITZER" decal has been applied, art glass panels in good condition; no rolls included; turns on when plugged in

**\$6000-\$8000** Circa 1925 59.5in x 46in x 24.5in



**344**  
 The Operators Piano Company, Inc., Chicago, Illinois, Coinola 25 cent coin operated player piano in quarter sawn oak cabinet and case with art glass floral window revealing piano board, electrical components in locked cabinet below keyboard

**\$400-\$600** Circa 1925 55.5in x 62in x 27in



**345**  
 The Regina Co., Rahway, N.J., a scarce "Reginaphone" 20 3/4 inch disc music box with phonograph, mahogany case with molded base, short bedplate movement and duplex comb, removable cast iron platen and tonearm with horn for conversion to phonograph, serial #1260117

**\$1500-\$2000** Circa 1910 12in x 27.5in x 23in



**346**  
 Mills Novelty Company, Chicago, Illinois, "War Eagle" model, dime playing, one armed, three wheel slot machine in a oak, nickel, and brass case with thunderbird motif and red, black and yellow painted highlights

**\$800-\$1200** Circa 1931 25.5in x 14.5in x 15in



**347**  
Germany, a good mid 19th century Black Forest "Uhrentrager" or clock peddler, the figure of polychrome painted sheet iron and in traditional dress, carrying a shield clock at his right, fitted with a Swiss lever escapement watch movement and dial, another clock slung over his back, his left hand clutching two pendulums, all mounted to a chamfered oak base

**\$1800-\$2500**  
Circa 1860 14.75in x 5in x 4.75in



**348**  
Bradley and Hubbard, Meriden, Conn., "Topsy", blinking eye novelty clock, cast iron case, paper on metal dial, club hands, and 30 hour spring driven brass movement

**\$1000-\$1500**  
Circa 1860 17in x 9in x 6in



**349**  
Poljoux, Geneva, a very decorative early 20th century enamel desk or bedside clock, on toupie feet and with cavetto base below a tripartite screen with bordering gilt, neoclassical ornament, all surfaces but the back with blue guilloche enamel decorated with fine, white line borders and roses, the screen ends with framed scenes featuring landscapes with stone putti on pedestals, the center also with a framed landscape scene with a courting couple in 18th century costume below the oval, arabic numeral gold dial, with white gold hands set with transparent, rose cut stones, 8 day timepiece movement with lever escapement, and contained in it's original, form fitting, gilt stamped blue morocco box, case, dial and box signed

**\$1000-\$1500**  
Circa 1920 8.25in x 9.25in x 3in



**350**  
France, for Ovington, New York, an interesting early 20th century figural desk clock, stepped verde antico marble base on flat, gilt feet surmounted by gilt bronze figures of two bald, smiling Asian men in patinated, patterned robes and supporting the rectangular, verde antico case with flat, rectangular, gilt bezel with beveled glass, and signed, conforming roman numeral gilt dial with blue steel spade hands, round, 13 jewel timepiece movement with lever platform, the back plate signed "Ch. Hour France"

**\$800-\$1200**  
Circa 1925 9in x 14.5in x 4.25in



**351**

France, an exceptional hour repeating carriage clock with Limoges panels and dial, the Anglaise case with bombe molded, stepped base, the corners with fluted columns having Corinthian capitals, and supporting a molded top with turned carrying handle and thick beveled glass, the case sides with polychrome opaque and transparent enamel scenes on a dark plum colored ground, featuring hunters in colorful Elizabethan costume and with hounds at their feet, the roman numeral dial with landscape, castle, and male figure with spear and blowing a horn, and rinceau spandrels above the chapter ring, 8 day, three train movement with lever platform, sounding the hours and half hour on a gong, and repeating the last hour on demand

**\$4000-\$6000**  
*Circa 1880 7.75in x 4in x 3.5in*



**352**

France, a very attractive 19th century carriage clock with polychrome porcelain panels, polished Gorge case with beveled glasses at front and back, the sides and top with polychrome painted porcelain panels depicting couples in antique dress strolling through landscapes, the top featuring colorful, flying birds, and the dial with birds, roses, and a landscape with cottage, all panels with gilt borders highlighted with translucent red enamel beads on a turquoise ground, roman numeral chapter ring with roses and blued steel Breguet style hands, 8 day, two train movement with lever platform, striking the hour and half hour on a bell, and repeating the last hour on demand

**\$3000-\$4000**  
*Circa 1870 5.5in x 4in x 3.5in*



**353**

A. Baveux, St. Nicholas d'Aliermont, for Harrison & Son, Darlington, a good, late 19th century, four gong petit sonnerie carriage clock, polished Anglais style case with five beveled glasses and quarters/ silent lever in the base, matte silver mask with roman numeral white enamel dial signed "Harrison & Son Darlington", blued steel hands, and subsidiary arabic alarm chapter, 8 day, three train movement with lever platform, sounding petit sonnerie quarters on four gongs, and striking ting tang hours, repeating the last hour and quarter on demand, the back plate marked at lower left, within an oval, "Brevete A.O.S.G.D.G.", possibly for Adolphe Ollier

**\$2500-\$3500**  
*Circa 1900 6.5in x 4.125in x 3.625in*



**354**

Bourdin, a Paris, a good mid 19th century grand sonnerie carriage clock, the gilt, engraved corniche case with four beveled glasses, faceted carrying handle, and case back with shutter allowing access for winding and setting, signed roman numeral white enamel dial with seconds below 12:00, subsidiary alarm chapter, gilt, engraved mask, and blued steel Breguet style hands, 8 day three train movement with duplex platform, sounding grand sonnerie quarters on two bells

**\$2000-\$3000**  
*Circa 1850 7.25in x 4in x 3.25in*



**355**

France, a fine mignonette #1 carriage clock with travel case, gilt Gorge variant case with beveled glasses, the sides with engraved masks enframing oval portraits of young women, engraved dial mask with roman numeral white enamel dial and blued distaff hands, 8 day timepiece movement with lever platform and cut bimetallic balance, with outer, red velvet lined travel case

**\$2000-\$3000**

*Circa 1900 3.25in x 2.125in x 1.875in*



**356**

France, a good striking carriage clock with polychrome enamel panels, gilt Cannelee variant case with foliate engraving, beveled glasses, and sides with enamel panels having red bead ornament and gilding on a turquoise ground framing young couples in landscape scenes, the roman numeral dial ornamented in the same fashion as the panels, and featuring two putti in the center, and a seated couple below, 8 day two train movement with lever platform, striking the hour and half hour on a gong

**\$2000-\$3000**

*Circa 1870 6in x 3.75in x 3.25in*



**357**

France, a large, unusual and decorative late 19th century architectural carriage clock, the Anglaise Riche variant case plated in gold and nickel, the base with stepped frieze, columns at the corners resting on bases with foliate ornament, the columns also with intermediate acanthus, and foliate capitals, supporting a pediment with fluted band and containing a Grecian rinceau, the case top with beveled glass having a foliate surround and folding handle, the various ornaments decorating the case highlighted in contrasting, three color gold plating, matte gilt mask with arabic numeral white enamel chapter ring, arabic alarm chapter, and blued steel hands, three train movement with lever platform, striking the hour and half hour on a gong, and repeating the last hour on demand

**\$2000-\$3000**

*Circa 1890 7in x 4.25in x 3.75in*



**358**

Auguste Pointaux, Paris, a good 19th century grand sonnerie carriage clock, Cannelee case with five beveled glasses, the base with sonnerie/ silence lever, roman numeral white enamel dial with constant seconds at 12:00, roman numeral alarm chapter below 6:00, and blued steel Breguet style hands, 8 day, three train movement with lever platform and cut bimetallic balance, striking grand sonnerie quarters on two bells, and sounding the last hour and quarter on demand, signed on dial and edge of back plate, serial #6698

**\$1500-\$2000**

*Circa 1870 5.5in x 3.625in x 3.25in*



**359**

Brunelot, for J.W. Benson, London, an unusual and very decorative late 19th century hour repeating carriage clock, gilt Cannelee case with decorative metal panels behind all beveled glasses but the rear, each panel with a silvered, hammered and matted ground with gilt floral and foliate ornament in low relief, the dial similarly ornamented and with signed roman numeral chapter ring and gilt and blued steel spade hands, 8 day, two train movement with lever platform, striking the hours and half hour on a gong, and repeating the last hour on demand, back plate with the letter B in a circle at lower left

**\$1000-\$1500**

*Circa 1880 5.5in x 3.5in x 3in*



**360**

France, an attractive late 19th century hour repeating carriage clock, gilt Anglaise Riche style case with bowed sides, five beveled glasses, the top glass with convex ends and incurved corners, matte silver mask with black enamel Limoges dial having faux white enamel cartouches with red roman numerals, the scheme repeated in the alarm chapter, but with arabic numerals, gilt distaff hands, and 8 day, three train movement with lever platform, striking the hour and half hour on a gong, and repeating the last hour on demand

**\$1000-\$1500**

*Circa 1890 7in x 5.125in x 3.75in*



### 361

Japan, an early 19th century Makura Dokei with calendar, the frame with ornamental, turned pillars, front plate with wave, sunburst and flying bird engraving, and calendar apertures above the rotating dial with fixed, blued steel hand and movable hour and half hour markers, the 30 hour, two train movement with fusee for the time train and and going barrel for the striking, verge escapement with light pendulum, and count wheel striking on a bell, in a shitan and unidentified hardwood case having glazed, sliding front and back frames, stepped, molded top with brass handle, and resting on a base with incurved feet

**Condition:** movement good, plates polished, fusee chain broken, strike mainspring broken, trains complete and function with pressure, small drawer with key and fusee chain fragment, hand with minor oxide, fabric backed opening on one side of case broken, one sliding frame with small loss at lower left, a very nice example. Deaccessioned from the American Clock and watch Museum, Bristol, Ct.

**\$3000-\$4000**

*Circa early 19th c 8.5in x 6.625in x 4.75in*





**362**  
Japan, an early 19th century Makura Dokei with calendar, the polished brass frame with ornamental, turned pillars and silvered, engraved frets at the corners, the 30 hour, two train movement with round plates, turned baluster pillars and chrysanthemum engraving, verge escapement with six arm balance, count wheel striking on a bell, and calendar apertures above the rotating, white jade trimmed dial with fixed, blued steel hand and movable hour and half hour markers, in a shitan wood case having glazed, sliding front and back frames, silk backed sound apertures with pierced, engraved frets, and molded top with ornamental brass handle

**Condition:** frame and movement plates polished, one hour and one half hour marker detached from dial, hour marker present, jade with crack, one silvered ornament polished to brass, some steel components with minor oxide, fusee chain broken, lacking strike hammer, trains complete and will function with pressure, case good overall, lacking separate base, small drawer containing key, fusee chain fragment, hour marker and marker springs. Deaccessioned from the American Clock and watch Museum, Bristol, Ct.

**\$3000-\$4000**  
Circa early 19th c 7in x 6.25in x 3.875in



Rear Detail

Front Detail



**363**  
Japan, an interesting mid 19th century inro dokei, the inro of carved hardwood with glazed dial aperture, the back with two winding apertures, and an oblong opening with engraved fret, the cover containing a small tray with winding key, the clock with gilt, chrysanthemum engraved plates, rotating dial with fixed, blued steel hand and movable hour and half hour markers, 30 hour two train movement with verge escapement and three arm balance oscillating beneath the bell, the back plate partially skeletonized, and with bird head and foliate engraving

**Condition:** inro front with split, cock bead loose and with break at joint, bottom with poorly glued joint, wood shrinkage precludes inserting the clock and tray, gilding on movement good, lacking one half hour marker, some steel components with minor oxide, fusee chain detached, strike mainspring broken, trains function with pressure. Deaccessioned from the American Clock and watch Museum, Bristol, Ct.

**\$3000-\$4000**  
Circa mid 19th c 3.5in x 2.25in x 1.25in

364



365



**364**  
Japan, an interesting later 19th century silver Inro Dokei, the brass movement with shaped plates and verge escapement, with rotating dial having movable hour markers, and contained in a silver case with chrysanthemum engraving and small crescent shaped aperture for viewing the dial, suspended from a red cord with silver human form ojime and silver manju netsuke with floral ornament surrounding two birds

**\$3000-\$4000**  
Circa 19th c 3.25in x 2.25in x 1in

**365**  
Japan, a good 19th century Keisan Dokei, the cylindrical silver case with well executed engraved foliate fretwork, convex glass and pocket watch style bow, gilt rotating dial with movable hour and half hour markers and fixed, blued steel hand, 30 hour engraved full plate two train movement with verge escapement, pierced and engraved balance cock, mock pendulum, turned baluster form pillars, and decorative blued steel ratchets, clicks and springs, striking on a bell mounted to the inside of the case, signed by the maker on edge of top plate

**\$3000-\$4000**  
Circa 19th c 1.25in x 2.875in



**366**  
Japan, a good early 18th century Kake - Yagura Dokei, polished sheet copper case, fixed dial with rotating, red lacquered center and a single brass hand, the iron two train movement with verge escapement, single foliot oscillating beneath a deep, domed bell secured by a rams horn nut, and driven by cylindrical cast iron weights, the case top with iron loop for hanging, all resting on a red lacquered pyramid base with iron bail handles and removable front panel

**\$2000-\$3000**  
Circa early 18th c 32in x 13in

**367**  
Japan, an unusual, small 19th century Dai Dokei with original box, the sheet brass case with chrysanthemum engraving on three sides and decorative turned brass pillars at the corners, the rotating brass dial with movable hour and half hour markers and a single, fixed blued steel hand, two train, weight driven brass movement with verge escapement, two arm brass balance oscillating beneath the bell, and brass clad cylindrical weights, resting on a hardwood base with four slender, splayed legs with ovolo molded corners, and glazed hood with silk backed apertures with engraved chrysanthemum frets, and with it's original, conforming box, box dimensions listed

**\$2000-\$3000**  
Circa 19th c 16.75in x 7.25in



**368**

Japan, a good 19th century double foliot Dai Dokei, the sheet brass case with chrysanthemum engraving on three sides, the fixed silver dial with engraved chapters, rotating center with single blued steel hand and alarm set holes and pin, and three train, weight driven brass movement with double foliot oscillating beneath the bell, and resting on a four legged wooden base with gilt leaf and vine ornament

**\$1800-\$2500**

*Circa 19th c 28in x 10.5in*



**369**

Japan, an interesting 18th century double foliot Dai Dokei with date, the sheet brass case with chrysanthemum engraving on three sides, turned brass pillars at the corners, sheet iron top and bottom, and date aperture below the fixed brass dial with engraved chapters, rotating center with single brass hand and alarm set holes and pin, and three train iron movement with double foliot oscillating beneath the bell, driven by lead weights, and resting on a wooden base with shaped, convex skirt, cabriole legs, and colorful, applied paper ornament featuring chrysanthemums, clouds and dragons

**\$1200-\$1600**

*Circa 18th c 35in x 11in*



# SCHMITT HORAN & CO.

*Seeking Fine Consignments*

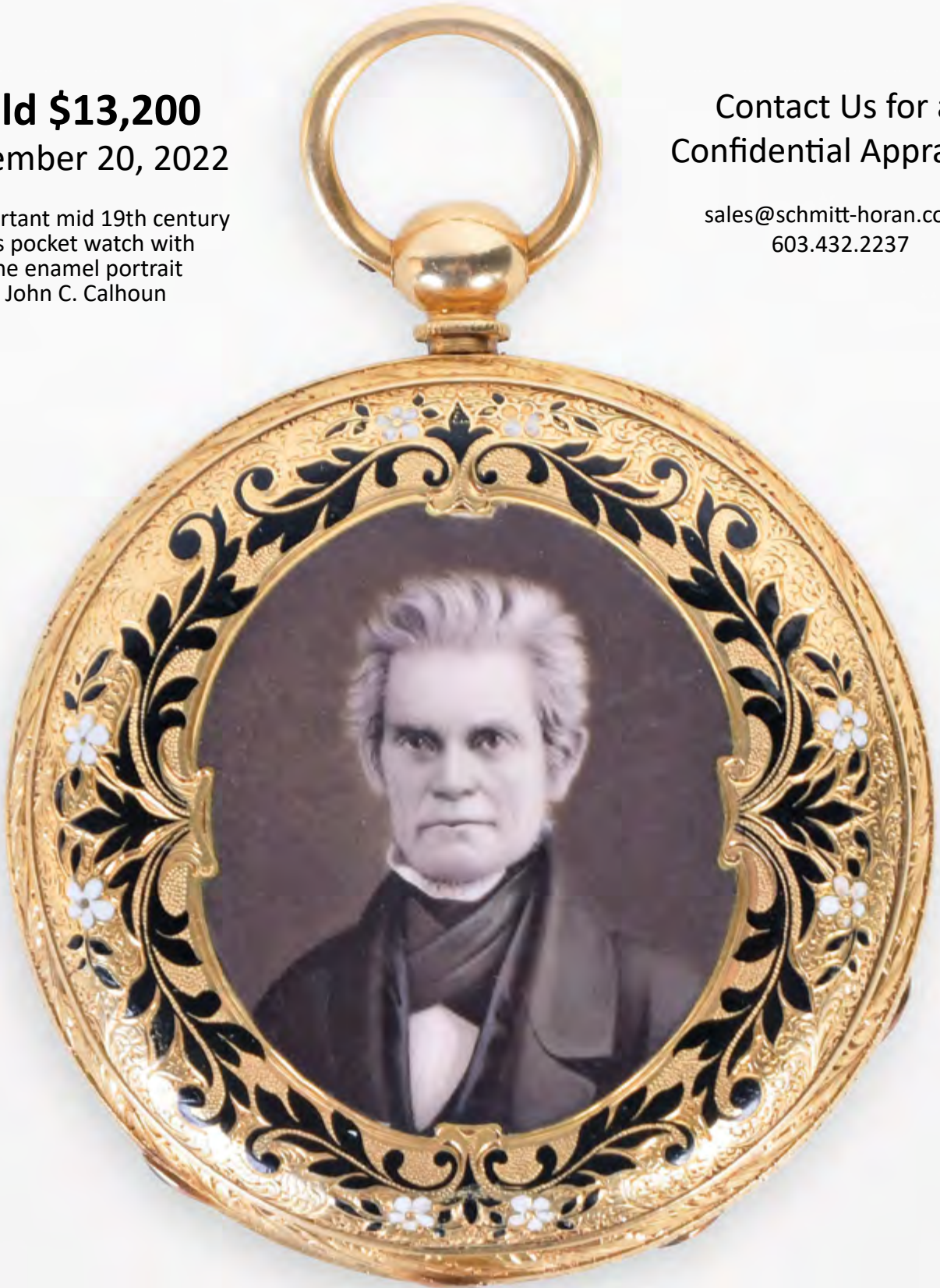
**Sold \$13,200**

November 20, 2022

An important mid 19th century  
Swiss pocket watch with  
a fine enamel portrait  
of John C. Calhoun

Contact Us for a  
Confidential Appraisal

sales@schmitt-horan.com  
603.432.2237





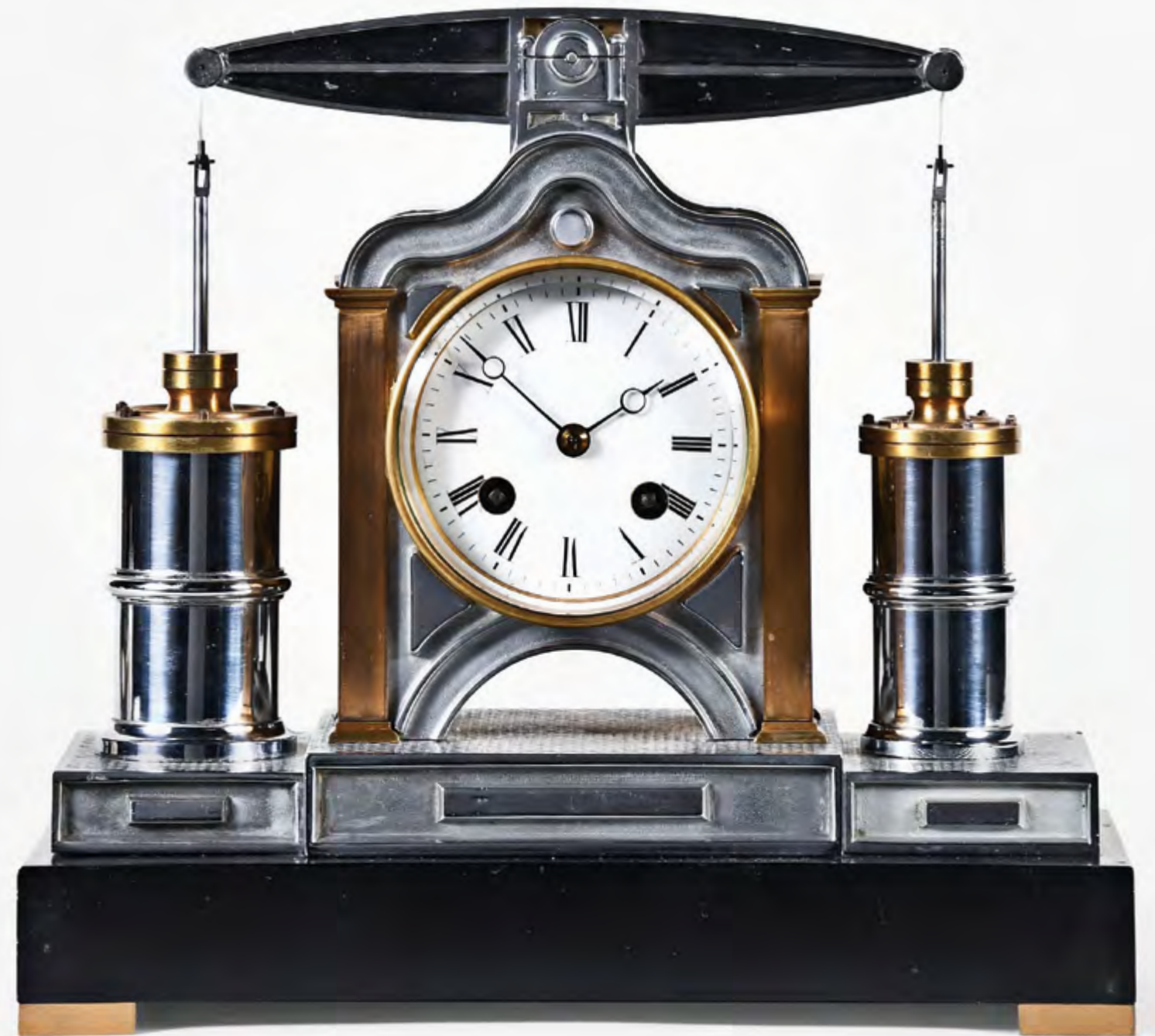
**370**

Breant a Paris, a fine late 18th century swinging lyre mantel clock, on a rectangular, gilt bronze plinth below an oval, blue - gray and white marble base with interlocking circle, bead, and floral mounts, the top of the base with gilt acanthus supporting a lyre form, beaded frame crowned with a floral festoon and Medusa mask, the swinging clock with knife edge suspended gridiron, roman numeral white enamel dial with open center, peripheral arabic date and five minute markers, engraved scissor and fleur de lis hands, blued steel date indicator, and 15 day two train movement, with skeletonized plates, pin wheel escapement, and striking the hours and half hour on a bell

**Condition:** losses to gilding, particularly on lyre frame, marbles with tiny flakes and chips, lacking one tassel ornament at base, dial with faint hairlines, date indicator with break, hands with minor bends, movement runs briefly, striking, back cock and pallet with marring from tools, crutch with bend and mounting modification at arbor, stand for crutch pin with bends, escape wheel pins falling on impulse plane of entrance pallet, will need repair and adjustment

**\$5000-\$7000**

*Circa 1790 21in x 9in x 4in*



**371**

Andre Romain Guilmet, Paris, a striking industrial "Beam Engine" desk clock, on a black slate base with gilt feet supporting a cast, crosshatched floor, the engine cylinders and pistons flanking the beam pivot frame, the beam rocking as if powered by the pistons, all surfaces finished with a combination of gilding and nickel plating, with roman numeral white enamel dial, blued steel Breguet style hands, and 8 day, two train movement with Guilmet's modifications, striking the hour and half hour on a bell

**Condition:** rear right foot with trimmed corner, nickel finish very good, gilding with wear, base now painted black, dial with hairlines at 9:00 and chip at strike winding arbor, hands with minor oxide, movement dirty, oily, running and striking, out of beat, hammer with solder, bell replaced, needs service and adjustment

**\$4000-\$6000**

*Circa 1885 10.5in x 10.5in x 5in*



**372**  
France, a fine, large figural mantel clock with biscuit porcelain figural group featuring Leda and the Swan, the exceptionally well modeled figures in a rocky landscape with Leda at left, looking down to the Swan at her feet, at right a cloud borne figure of cupid, apparently whispering to Leda, with his bow and quiver at his left, and below him a pair of birds, the group resting on a base with large gilt feet, faux marble finish and three grisaille panels, the central scene featuring a bored looking Poseidon, Triton blowing his horn, Lamia, also with horn, and an intoxicated hippocampus, the ends of the base with genre scenes, the right with a young woman in a landscape washing clothes, the left a landscape with a seated figure taking fruit from a tree, with a gabled building in the background, roman numeral white enamel dial with pierced and engraved gilt hands, and 15 day, two train movement with silk thread suspension, striking on a bell

**Condition:** gilt bronze components dirty, base with minor wear to gilt borders and with a few insignificant chips, the figural group with some losses and repairs, including a break to Leda's left leg, repaired toes on the left leg, repairs to the fingers on both hands, repairs to the right wing of the swan, repair to cupid's bow, left wing, and right hand, repair to right wing of one bird at lower right, repairs and the surrounding areas with white paint, now yellowed, dial with minor scratches, minute hand replaced, movement dirty, ticks and strikes, lacking pendulum and bell

**\$4000-\$6000**  
Circa 1800 23in x 19in x 7.75in



**373**  
Robin, a Paris, a monumental gilt bronze figural mantel or table clock in the Louis XVI style, the rectangular base with outset corners mounted with foliate roundels, and supporting a plinth with leaf and dart moldings, festoons with fruit, foliage and a central rose, and egg and dart molded top with central arch, surmounted by two reclining putti, the figure at right holding a spyglass, signed roman numeral white enamel dial with gilt hands, 8 day, two train pendule de Paris movement with silk thread suspension, signed "Robin a Paris", striking the hours and half hour on a bell

**Condition:** a bit dirty and with minor losses to gilding, lacking feet, large end of spyglass loose, figure at left lacking one or two navigation related instruments, bezel hinge with damage, dial with repaired losses, hands with loss to gilding, movement very dirty, ticks and strikes, pendulum replaced

**\$2500-\$3500**  
Circa 19th c 16.5in x 25in x 8.5in



**374**

Lepine, Paris, a good mid 19th century four glass mantel regulator with perpetual calendar, the large gilt brass case with molded top and base, rounded corners, and thick beveled glasses, with engraved and matted dial mask, the upper, roman numeral white enamel dial with signed, sunk center, exposed Brocot escapement, and gilt spade hands, the lower display also with recessed center enamel dial, the outer chapter indicating the months, and the center with subsidiary chapters indicating the day, date, and leap year above a polychrome enamel sky and clouds with aperture indicating phases of the moon, signed 15 day pendule de Paris movement with Brocot's compensated pendulum based on Ellicott's design, the calendar mechanism advanced daily by a lever, activated by a pin on the count wheel

**\$3000-\$4000**

*Circa 1850 14.25in x 8.75in x 6.375in*



**375**

Gaston Joly, a Paris, an early 19th century skeleton clock, the gilt, arched frames with bright and matte surfaces and on cylindrical, engine turned feet, roman numeral white enamel dial with concentric, inner date chapter, gilt hands, pierced surround, and beaded bezel, with flanking, seated caryatids, acanthus ornament and rinceau, and surmounted by an eagle with fruit and foliate ornament, 8 day, two train movement with silk thread suspension, Medusa mask pendulum, all resting on a rectangular black marble base with quiver, oak leaf and acorn mount, and gilt feet

**\$2000-\$3000**

*Circa 1805 17.75in x 9.375in x 4.625in*

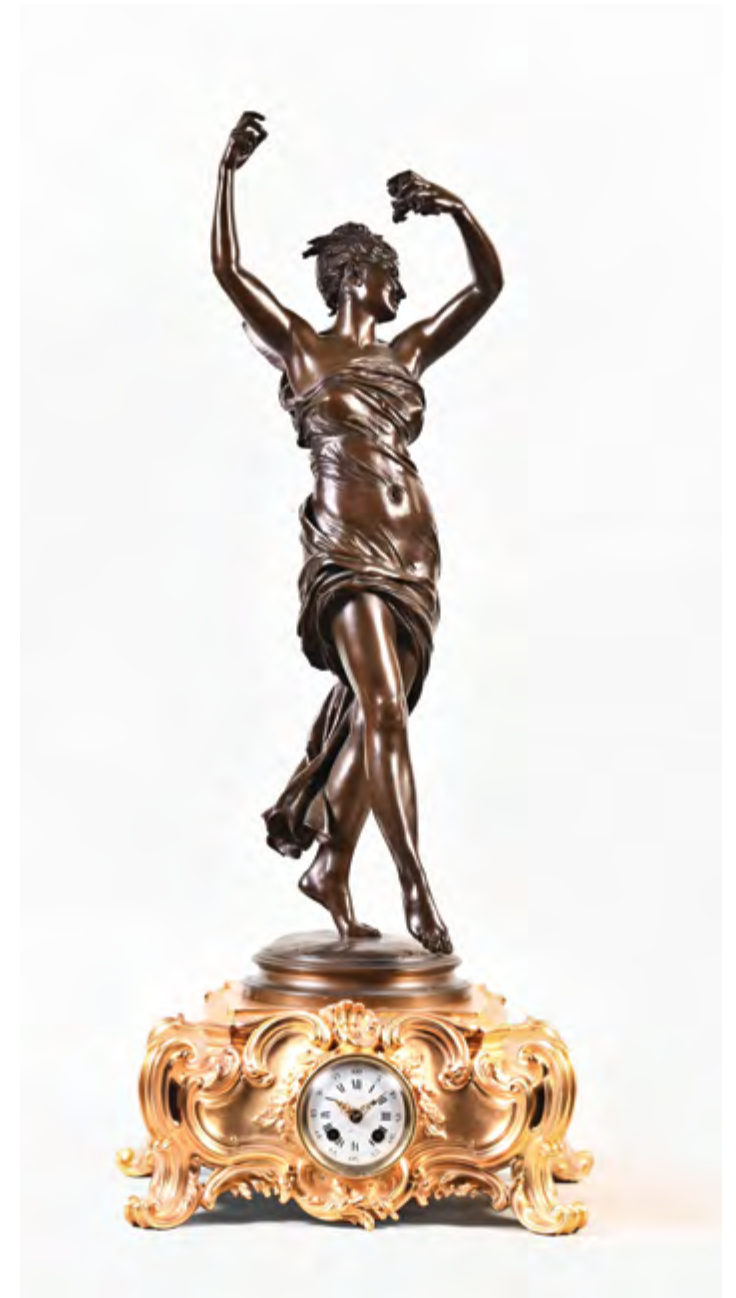


**376**

Vittoz, a Paris, for Bigelow, Kennard & Co., a monumental mid 19th century bronze mantel clock, featuring an exotic female figure with shell necklace, bracelets and patterned skirt, a woven carrier on her back with a small child, a bag to her right with pineapple, and a monkey about to steal her harvest, signed, gilt dial with roman numeral white enamel cartouches and gold painted hands, all on a gilt and patinated base ornamented with banana leaves, gilt banana clusters, pineapples, and other fruits, the corners with seated monkeys consuming various produce, and with a snake and lizard emerging from the harvest bounty, with 8 day, two train pendule de Paris movement striking the hour and half hour on a bell, the back plate marked within an oval "B.K & C."

**\$1800-\$2500**

*Circa 1865 27.5in x 19.5in x 12in*



**377**

France, a fine late 19th century figural mantel clock, the patinated bronze sculpture of "La Nympe Chloris" rendered in exquisite detail, the dancing figure on the toes of her left foot, her arms raised above her head, with flowers in her hair and left hand, her dress expertly rendered, trailing and flowing in response to her movement, on a molded plinth signed by sculptor "Eugene Delaplanche" and also by the founder "F. Barbedienne", resting on a gilt bronze base having scroll feet, with rococo ornament including C scrolls, acanthus, and a stylized scallop shell, roman numeral white enamel dial with gilt Louis XIV style hands, and 8 day, two train movement with lever platform, striking the hours and half hour on a bell, signed "J. Dupont Paris"

**\$1500-\$2000**

*Circa 1890 30in x 12.5in x 10in*



**378**

France, for M.S. Smith & Co., Detroit, a late 19th century figural mantel clock with conical pendulum, the break front alabaster case on scroll feet and molded base, case sides with stylized scroll, anthemion, and palmette mounts, the front with cruciform mount echoing those at the sides, signed, roman numeral alabaster dial with gilt spade hands, the case surmounted by a standing, gilt spelter female figure representing industry and commerce, with globe at her feet and a locomotive in her right hand, her left held aloft and supporting the conical pendulum with nickel plated, spherical bob with two gilt stars, driven by an 8 day, two train movement striking the hours and half hour on a bell

**\$1000-\$1500**

*Circa 1880 24.5in x 13.25in x 7in*



**379**

Germany, a decorative early 20th century 400 day mantel clock, the bow front, brass, six glass case with green onyx base, having a blue and white champeve enamel molding and feet, fluted columns with champeve bases and Corinthian capitals, and the top with champeve molding to match the base, molded green onyx plinth, and champeve ornamented oval urn, arabic numeral white enamel dial with blued steel spade hands, champeve bezel, floral festoons, and marked "Anniversary" above 12:00, and "Trade Mark Registered" beneath 6:00, year going movement with dead beat escapement and gilt, disc type torsion pendulum. This clock was the personal property of William E. Sessions, President of the Sessions Clock Company and was in the library of his mansion on Bellevue Avenue, Bristol, CT until the 1970s.

**\$1200-\$1600**

*Circa 1910 19in x 10.75in x 7.25in*





**380**

Black Forest, Germany, monumental hand carved walnut mantel clock with beautifully carved stag in full relief in forest setting flanked with ferns, maple and oak leaves, wooden dial with applied numerals, carved bone hands, 8 day French-made "Marti" time and strike pendulum movement with thick brass plates, serial no. 4780, 72

**Condition:** truly impressive carved case in very good overall condition, antlers appear to have come from an actual live stag, case with some minor repairs including two separation repairs on the leaf flourish at left of stag and another at the lower left base, large center leaves with some missing tips, case with several thin horizontal and vertical shrinkage cracks at lower and mid section beneath the dial and on rear side of stag, numerals replaced, bone hands are re-carved replacements, dial has slightly warped with age causing the hands to scrape against dial and each other, especially on the left side, hand shaft may need lengthening to correct, minor worm hole damage on left side of carved case housing, case with opening for cuckoo door on the inside but bears no evidence of ever having a cuckoo movement or bellows, it's likely the case was re-adapted at the factory for this intended use with just a French gong strike movement

**\$3000-\$4000**

*Circa 1900 47in x 26in x 14in*



**381**  
Black Forest, Germany, musical shelf clock in hand carved walnut case depicting hunter with his Labrador retriever, wooden dial with applied cartouches, steel hands, French time and strike 8 day spring driven movement with Swiss music box in base

**Condition:** exquisitely carved case in overall very good condition with no apparent repairs or losses, lower base trim with horizontal split on left and right side, number twelve cartouche with some loss to blue surface, movement marked "Leuenerberger Interlaken" and is very clean and running, serial no. 1649, music box also newly cleaned and is runs well but tune selector will need adjusting, clock movement activation lever to music box needs reattachment but is included, original pendulum

**\$3000-\$4000**

*Circa 1900 26.5in x 21.5in x 10.5in*



**382**

Black Forest, Germany, ornately hand carved shelf cuckoo clock with St. Bernard and forest motif, wooden dial with applied numerals, steel hands, 8 day time and strike spring driven brass movement

**\$3000-\$4000**

*Circa 1900 30in x 19in x 9.5in*

**383**

Germany, a large Black Forest mantel clock, the walnut case with twig, foliate and rockwork carving surmounted by a pair of well executed pheasants, matching carved vases of equal detail, carved wooden dial with shield shaped roman numeral cartouches, and 8 day, two train, pendule de Paris movement, striking on a bell

**\$2500-\$3500**

*Circa 1875 29.5in x 20in x 7.5in*





**384**  
Johann Baptist Beha, Black Forest, Germany, intricately carved shelf cuckoo clock depicting hunter and dog within a forest scene, wooden dial with applied numerals, bone hands, 8-day double fusee time and strike wood plate movement

**\$1500-\$2000**  
*Circa 1890 27.5in x 20in x 8in*

**385**  
Johann Baptist Beha, Eisenbach, Germany, for the English market, model 519 B shelf cuckoo clock, burl veneered oak case with floral marquetry inlay and applied carved foliate molding, painted two piece metal dial, steel hands, time and strike 8 day fusee wood plate movement

**\$1500-\$2000**  
*Circa 1880 18in x 13in x 7in*

**386**  
Black Forest, Germany, large shelf cuckoo clock, wood case with applied carvings, wooden dial with applied numerals, carved bone hands, 8 day spring driven time and strike movement

**\$1000-\$1500**  
*Circa 1890 30in x 21in x 6.5in*

386



384  
DETAIL

**387**  
Black Forest, Germany, shelf cuckoo clock with hand carved case depicting pheasant family, wooden dial with applied numerals, wooden hands, 8 day cast brass fusee spring driven movement

**\$1000-\$1500**  
*Circa 1869 25in x 27in x 7.5in*





**388**  
Black Forest, Germany, three piece mantel clock garniture, hand carved walnut scene with stag and hounds flanked by male stags with offspring, ebonized black dial with applied enamel cartouches, pierced spade steel hands, American Seth Thomas Sons & Co. 8 day spring driven pendulum movement

**\$1000-\$1500**  
Circa 1900 20in x 24in x 8in



**390**  
Black Forest, Germany, musical cuckoo clock, hand carved wooden case, wooden dial with applied numerals, bone hands, 30 hour time and strike weight driven movement with music box

**\$800-\$1200**  
Circa 1890 31.5in x 22in x 12.5in



**391**  
Ketterer, Black Forest, Germany, "Harrenhausle" ash veneered architectural case with ornate graining, shingled roof and dormer with gingerbread fascia and corner downspouts, mirrored wood plate time and strike double fusee spring driven pendulum movement

**\$2500-\$3000**  
Circa 1885 23.75in x 11.5in x 8.25in

**389**  
Switzerland, a good Black Forest chalet form clock with music box, the three story building beautifully carved and detailed with balcony, exterior staircases, mirror windows, bee skep, fire wood pile, horse trough, fencing, and shingled roof with rock weighted poles, the gable with clock, carved dial with applied roman numerals and gilt hands, two train Lenzkirch movement striking on a bell, and the base containing a four tune, six inch cylinder music box, released by the clock movement at the hour, or manually by lever at the left end of the structure



**\$1000-\$1500**  
Circa 1890  
17.75in x 21.75in x 11in



**392**

Germany, Black Forest, very large musical romantic forest motif cuckoo clock, weight driven, time and strike movement of one day duration with music box. Total height with weights showing is nearly five feet, extra fine detail on the grouse, grazing deer and crest of oak leaves. Cast iron weights simulate pine cones. Balance of trim is carved oak leaves, acorns, ferns, mushrooms, 3 dimensional moss and pine trees. Articulated cuckoo bird with moving beak and wings and hand painted zither player. Heavy cast brass lyre movement with quality music box. Overall a rare and exceptional piece.

**\$2500-\$3500**

*Circa 1900 59in x 29in x 19in*



**393**

Jacob Bauerle, Germany, hanging Trompeteruhren, or Trumpeter Clock, oak Gothic style case with dragons in crest and carved vine and leaf fretwork carrying down through the base, animated trumpeter figure positioned on top and a second trumpeter concealed behind plank doors below the turned wooden dial with applied roman numerals, the bellows, wind chest, and five pipes are mounted above the two train, 30 hour wood plate movement

**\$1500-\$2500**

*Circa 1870 46in x 19.5in x 10in*



**394**

Hubert Herr, Triberg, Germany, hanging cuckoo clock, large hand carved hunter motif with game, powder horn, game bag and mounted stag head, wooden dial with applied numerals, carved bone hands, 30 hour cast brass cuckoo and quail quarter striking weight driven movement

**\$1200-\$1600**

*Circa 1910 54.5in x 29in x 17in*



**395**

Ketterer, Black Forest, Germany, cuckoo wall clock, wooden case with front molded shield and applied carved fascia depicting an ornate hunter scene with dog, wooden dial with applied bone numerals, carved bone hands, 50 hour wood plate spring driven movement

**\$1000-\$1500**

*Circa 1880 21.75in x 14.5in x 5.5in*



**396**  
Dent, London, a monumental 19th century mahogany gallery timepiece, the molded base with leaf and scroll carved corbels and egg and dart moldings, the upper section trimmed with simple rope moldings and nicked bezel with turned, acanthus carved surround with stippled ground, signed 18 inch roman numeral silvered dial with blued steel spade and poker hands, and substantial, five pillar fusee timepiece movement with dead beat escapement, Harrison's maintaining power and spotted plates, the back plate signed "E. Dent & Co.", pendulum with wooden rod and cylindrical brass clad pendulum, serial #1755

**Condition:** case with minor bumps and dings, carved bezel surround with split and joint separation at left, front with minor splits and some telegraphing of joints through veneer, shrinkage gap between case front and base, some trim on ends of corbels replaced, bezel with dings, dial with minor spotting, hands with minor bends, movement darkened and with a few fingerprint stains but otherwise very good, original decoration without abrasion or other marring, ticking, pendulum bob with fingerprints, dents, and split, suspension broken

**\$5000-\$7000**  
Circa 1865 34.5in x 33in x 10000.25in



**397**  
F.X. Wildenauer, Munich, a spectacular carved Columbian Exposition wall clock, the case with a profusion of naturalistic carving including scrolls, foliage, scallop shells, fruits and Green Man masks, also with strap work ornament and architectural features including cavetto and ogee moldings, pilasters, a denticulated cornice, and leaf and dart molding, the removable crest also with carved scrolls, central scallop shell with foliage, swags below fleur de lis pinnacles, and winged female mask below a six pointed star and gadroon with pineapple, the arabic numeral gilt and silvered dial with carved surround and ornate pierced and engraved silvered hands, 8 day two train movement striking the hours and half hour on a gong, the pendulum with wooden rod and six inch round bob decorated with a cluster of applied stars, and a three dimensional ornament featuring a young woman seated on a crescent moon, the case back with the manufacturers metal tags, and a note in graphite stating that the clock was purchased at the Columbian Exposition in Chicago, 1893

**Condition:** case with untouched surface, minor loss to the right side of the lower back board, a scroll tip missing at bottom, lower back board with center joint separation, front of case also with center joint separation, separation with filler in cornice molding, right side of cornice with joint separation, lower crest molding with checking, swag with splits, splits to either side of scallop shell, crest a very tight fit, dial with losses to gilding and silvering, hour hand with loss, movement dirty, ticking, strike train with power but strike not releasing, needs service, pendulum bob components with losses to finish, lower end of crescent moon with damage, moon and figure wired to bob

**\$3500-\$5000**  
Circa 1890 51in x 21.75in x 10.25in



**398**

Germany, a late 19th century Vienna regulator style year going wall clock, the case with carved, S curved bottom bracket and half round turned drop below a molded surbase with applied pyramid ornaments and recessed panels, the door with split turnings, tapered pilasters with stylized capitals, and frieze with blind fret and flanking corbels supporting a simple molded cornice, and an ogee molded gable surmounted by a stylized, carved shell, two piece roman numeral white enamel dial with fancy blued steel hands, marked "Patent One Year Clock", and with the trade mark of retailer Carl Hermsen, year going fusee timepiece movement with faux gridiron pendulum, the cast bob with lions, scrolls, and center with bust of a bearded man in profile

**\$1500-\$2000**

*Circa 1890 41.5in x 13.25in x 7in*



**399**

Austria, a mid 19th century Dachluhr timepiece, six light mahogany veneered case trimmed with boxwood strips, incurved bottom bracket with turned drop, and cupids bow top with central carved scallop shell, roman numeral white enamel dial with blued steel Breguet style hands, and 8 day time piece movement with dead beat escapement, pendulum with polished steel rod and brass bob, and brass clad weight

**\$1000-\$1500**

*Circa 1845 36.25in x 10in x 4.125in*



**400**

Lenzkirch, Germany, decorative carved front wall clock richly ornamented with cast brass elements, oak case, embossed silvered brass dial, ornate cut steel hands, 8 day spring driven time and strike movement, movement serial number 71622

**\$1500-\$2500**

*Circa 1900 42.5in x 21in x 9.5in*



**401**

Lenzkirch, Germany, an early 20th century freischwinger, impressive architectural, oak veneered case with applied brass ornaments, scroll sawn backboard and brackets below the square mid section with molded cornice, highly decorative crest with portico top supporting a large eagle finial, arabic numeral brass dial, spade and pointer hands, 14 day, two train movement striking the hours and half hours on a gong, the cast pendulum bob with cherub ornament, with it's original key, movement serial #5907

**\$1000-\$1500**

*Circa 1900 52.5in x 31in x 10.5in*





**402**  
 Evans & Sons, Handsworth, a fine mid 19th century arabesque skeleton timepiece, the well executed frames with seven pillars and fusee movement with wheels having six spoke crossings, recoil escapement, passing strike, and Evans compensated half seconds pendulum with cylindrical pewter bob, the skeletonized roman numeral silvered dial supported by a third fretted frame matching those behind, and with silvered plate engraved "Evans & Sons Handsworth", all resting on an oval, footed white marble base with conforming glass dome

**Condition:** frames with minor tarnish, front frame with crack at top, right, dial and name plate good, movement ticking, pendulum good, marble base a bit dirty, otherwise good, dome with 4 x 6 break at lower right, all but one small piece taped in place

**\$5500-\$7500**  
 Circa 1860 21.75in x 16.75in x 8in



**403**  
 Thomas Mercer, St. Albans, for J.E. Caldwell & Co., Philadelphia, a fine early 20th century mantel chronometer, the plain and figured mahogany veneer case with footed, cavetto molded base, ebonized edging, beveled glasses to the top and sides, built in level, and polished brass bezel with convex beveled glass, signed, roman numeral silvered dial with wind indicator, seconds bit, start/ stop control at 12:30, and blued steel spade and poker hands, 13 jewel, spotted brass fusee movement with heavy turned pillars, platform with freesprung chronometer balance and Earnshaws spring detent escapement, and signed back plate, serial #666, case bottom with original instruction label

**Condition:** case in original finish and with minor separation at corners of the base, tiny bump on left side of base, veneer with minor checking, glasses good, dial and hands good, movement clean and running well, label with losses

**\$5000-\$7000**  
 Circa 1930 11.5in x 10.25in x 5.625in



**404**

Attributed to Evans, Handsworth, a good mid 19th century cathedral form skeleton clock, the well finished frames with seven pillars and Gothic style fretting, 8 day, two train fusee movement with recoil escapement, wheel work with six spoke crossings, Evans compensated pendulum with wooden rod and cylindrical pewter bob, striking the hours on a gong and with pull repeat, roman numeral, silvered skeletonized dial with blued steel Breguet style hands, mounted to a black velvet lined, ebonized, footed oval base with conforming glass dome.

**\$2500-\$3500**

*Circa 1860 19in x 9.5in x 12.25in*



**405**

An interesting mid 20th century skeleton clock signed Francis Moine, the shaped frames on two pairs of plinths, each with a common, stepped top and bottom, silvered dial with overlapping rings, the lower with roman numeral hours and signature, the center chapter ring showing arabic minutes, and small seconds at top, with plate stating "Compensated Regulator", all with blued steel hands, single train fusee movement with coup perdu pinwheel escapement, and an unusual two rod, half seconds pendulum the square brass bob with attached, curved steel rod having brass sliding weights, all on an ebonized oval base with conforming glass dome

**\$2000-\$3000**

*Circa mid 20th c 16in x 10.5in x 7.5in*



**406**

John Purdom, London, a good early 18th century table clock with pull quarter repeat, the ebonized case with molded, brass trimmed base and cushion feet, the front and rear doors with brass aperture molding and paired escutcheons, molded cornice and brass trimmed caddy top with finely pierced and engraved brass fret, and turned, gilt wood finials, the sides with knopped handles and engraved brass frets matching the top, brass composite dial with roman numeral silvered chapter ring and blued steel hands, the matted center with date aperture and mock pendulum below 12:00, Dutch style day of the week aperture above 6:00, and subsidiary strike/ silent and rise and fall regulation dials flanking a lunar date chapter with penny moon, eight day three train fusee movement, now with recoil escapement, the back plate engraved with wheatear border enframing scrolling acanthus, birds, and canephore, counting the hours on a bell, and with pull quarter repeating on six bells, with brass clad pendulum

**\$2000-\$3000**

*Circa 1730 23in x 11.375in x 7.5in*



**407**

John Pepys, London, a good mid 18th century table clock with pull quarter repeat, the ebonized case with molded, brass trimmed base on cast brass bracket feet, canted corners with caryatid mounts above bowknot - suspended floral garlands flanking glazed doors with break arch apertures, case sides with fabric backed pierced brass frets, and caddy top with decorative cast mount and folding handle, 7 inch composite dial with silvered roman numeral chapter ring, matted center with apertures for mock pendulum and date, and silvered plate engraved "J. Pepys London", cast, gilt spandrels, strike/ silent selector in the arch, and well finished blued steel hands, 8 day, three train movement with acanthus engraved back plate, verge escapement with bob pendulum, and pull quarter repeating on six bells

**\$1800-\$2500**

*Circa 1740 14.25in x 10.25in x 7.25in*



**408**

Sigmund Riefler, Munich, an early 20th century type A1 astronomical regulator, the art deco influenced mahogany case with molded top and bottom, cylindrical corners, and mahogany dial mask with two ebony banded inlaid squares, hinged to a maple frame and panel back board with nickel plated adjustable beat scale and cast iron, rear mounted movement mounting and leveling bracket, silvered roman and arabic numeral astronomical dial with polished steel hands, signed "S. Riefler Munchen", jeweled type A movement with spring impulse escapement, electric remontoire, and knife edge suspension resting on polished agate pads, type J seconds beating invar pendulum with barometric compensation and tray for fine timing weights, serial #1355, together with its boxed control panel with rheostat and relay

**Condition:** case front sags a bit, some joints with separation, case would benefit from disassembly and regluing, left side glass with crack at top, case back with splits at top and bottom, dial and hands good, movement good, plates darkened, running, electric remontoire not tested, pendulum good. The absence of a serial number and year is a bit of a puzzle. The dial is lined for the engraving of this information, but the work was not done. The serial number on the pendulum would suggest a date between 1910 - 20. The barometric compensation unit is a very good reproduction of the original, made in Germany between 2000 - 2010.

**\$25000-\$35000**

*Circa 1915 59.75in x 17.25in x 8.5in*



**409**

Seth Thomas Clock Co., Thomaston, Conn, "Regulator No. 16" hanging jeweler's regulator in a walnut case with burl walnut back panel and highlights, painted metal dial, spade hands, 8 day weight driven timepiece movement with dead beat escapement, maintaining power and a sweep second hand

**Condition:** The case is in excellent condition with a very old and likely original finish. The dial appears repainted. The hands are original. The door glass is a later replacement. The beat scale, door hinges, weight pulley, dial bezel are all nickel plated as is the nicely damascened pendulum bob. The movement is signed. There are several areas on the case stamped "22".

**\$8000-\$10000**

*Circa 1885 77.5in x 23.5in x 9in*



**410**

T. Cooke & Sons, York & London, an early 20th century hanging astronomical regulator, four light, rectilinear mahogany case with rounded corners, door with dust joint, and back board with silvered beat scale, roman and arabic numeral 24 hour silvered astronomical dial with blued steel hands, and brass movement, the A shaped plates with incurved sides mounted to iron brackets and with dead beat escapement having adjustable steel Brocot style pallets, and Harrison's maintaining power, pendulum with round wooden rod and cylindrical zinc bob, and brass clad weight

**Condition:** case top and upper sides with splits, the finish with scratches, minor losses and a bit of white paint, beat scale with darkening, dial with darkening and losses to silver, minute hand with bends, movement dirty, oily, will run, pendulum appears to have originally had a compensation sleeve, weight line guide lacking pivot bar, weight with bulges at base, minor dents, spotting and bent hook

**\$6000-\$8000**

*Circa 1910 54.25in x 13.75in x 9in*



**411**

United States Clock Co., New York, NY rare hanging jeweler's regulator in a walnut case with large finial surmounting the curved arch top, backboard set with burl panel, roman numeral painted metal dial with 18in reveal and spade hands, 8 day, time only, weight driven movement with maintaining power stamped by maker and regulated by single jar mercury pendulum

**Condition:** the clock is in good original condition with nicely rubbed down original finish; the dial minor loss at mounting screws; nickel plated weight, pendulum frame is a replacement; mercury included

**\$6000-\$8000**

*Circa 1900 81in x 27.5in x 8.25in*



**412**

Ansonia Clock Co., New York, NY, "Regulator No. 14" hanging jeweler's regulator in a carved walnut case with carved appliques and crest, roman numeral white enamel dial with sweep seconds, 8 day, time only Swiss movement with pin wheel escapement, driven by a single brass weight and regulated by a gridiron lyre pendulum

**\$4000-\$6000**

*Circa 1883 84in x 24.5in x 10.5in*



**413**

Lenzkirch, Germany, "Model 311", large hanging jeweler's regulator in the style of a Vienna regulator clock in a walnut case with ebonized highlights and three upper finials and three drops, roman numeral two part enamel dial with moon hands and sweep seconds, 8 day, time only movement driven by a single brass weight and regulated by a meter long grid iron pendulum, serial #265542, stamped on both movement and rear of dial

**\$4000-\$6000**

*Circa 1880 79in x 20.5in x 9.25in*



**414**

Ansonia Clock Co., New York, NY, "Regulator No. 18", hanging jeweler's regulator in an oak case with fancy arched top, roman numeral white enamel dial with moon hands and sweep seconds, 8 day, time only Swiss movement with pinwheel escapement driven by a single brass weight and regulated by a gridiron lyre pendulum

**\$3000-\$5000**

*Circa 1894 90in x 24.25in x 12.25in*



**415**

Waterbury Clock Co., Waterbury, Conn., "Regulator No. 7" hanging jeweler's regulator in a walnut case with burl highlights, roman numeral white enamel dial with sweep seconds and maltese hands, 8 day, time only Swiss movement with pinwheel escapement driven by a single brass weight and regulated by a gridiron lyre pendulum

**\$2500-\$3500**

*Circa 1891 82in x 25.5in x 11.5in*



**416**

Ansonia Clock Co., New York, NY "Regulator No. 16" hanging jeweler's regulator in an oak case, roman numeral white enamel dial with sweep seconds and nickel plated bezel, 8 day, time only Swiss movement with pin wheel escapement driven by a single nickel plated weight regulated by a nickel plated gridiron lyre pendulum

**\$2000-\$3000**

*Circa 1894 84in x 26in x 10.25in*



**417**

F. Kroeber & Co. "Swiss Regulator No. 22" hanging jeweler's regulator in a walnut case with burl veneer backboard and applied Egyptian bust on crest, roman numeral white enamel dial with sweep seconds, 8 day, time only Swiss made movement with pin wheel escapement, driven by a single brass weight and regulated by a gridiron lyre pendulum

**\$2000-\$3000**

*Circa 1877 84in x 22in x 9.5in*



**418**

Wm. L. Gilbert Clock Co., Winsted, Conn., "Regulator No. 20" hanging jeweler's regulator in a cherry case, roman numeral white enamel dial with sweep seconds, 8 day, time only movement with Graham dead beat escapement, driven by a single brass weight regulated by a meter long pendulum with brass bob

**\$1500-\$2500**

*Circa 1910 83in x 20.5in x 8.75in*



**419**

Synchronome, London, for Dykes Bros. Glasgow, an early 20th century seconds beating master clock, the oak case with molded top and bottom, roman numeral white painted dial with black painted Synchronome hands, and iron frame movement with black finish, and pendulum with artillery shell bob, serial #930

**\$1000-\$1500**

*Circa 1925 49.125 x 12in x 6in*



## 420

An exceptional late 19th century custom standing astronomical regulator, the walnut and burl walnut veneer case on a stepped, molded base with incised line carving, the trunk with glazed door above a horizontal ornament with shallow carving, flanking, inverted scroll carved corbels with stippled ground, and mirrored back, and with drumhead top with carved, molded crest and turned walnut bezel, and surmounted by an ogee molded plinth with egg and dart carving, sixteen inch silvered astronomical dial signed "Frederick H. Paul Waltham", with roman hours, arabic minutes and seconds, and blued steel hands, heavy brass movement with 8" x 10.5in plates, the front skeletonized, with jeweled Graham dead beat escapement, high count wheels having five and six spoke crossings, and all but the great wheel running in sapphire jewelery, the compensated, mercury pendulum with polished steel rod, the bob with brass and steel frame, polished steel cylinders, acorn drops, and the top with gilt, horizontal S scroll ornaments, silvered beat scale on a fretted and carved walnut base, and brass clad weight with decorative pulley

**Condition:** case in an old finish with areas of bloom and delamination, bumps and dings at base, small area of white paint at base, right rear, right side of trunk with two small holes, left side of top with split, trim around bezel with two splits and joint separation, interior with a number of small screw holes and dent from weight, beat scale stand with repair, dial with tarnish and losses to silver, hands good, movement with minor tarnish and fingerprint staining, great wheel a bit loose on arbor, crutch with bend, very dirty, ticking under power of the maintaining spring, one mounting screw with thread issues, pendulum and weight good. Frederick H. Paul (1864 - 1951) was born in Fort Wayne, Indiana. He was employed by the Elgin Watch Co. prior to 1905, and then worked for Waltham between 1905 and 1913.

**\$10000-\$15000**

*Circa 1880 89.5in x 32.75in x 15in*



**421**

Attributed to J.J. Elliott, London, a monumental chiming hall clock in an elaborately carved mahogany case, the base and hood with marquetry panels, case back and hood sides with fretwork panels, glazed trunk door and sides, on four bracket feet, brass dial with cast brass spandrels, arabic numeral silvered chapter ring and seconds bit and three silvered subsidiary dials for Strike / Silent, Chime / Silent, and tune selection of Westminster / Whittington, 8 day, three train movement driven by three brass weights, chiming the quarters on nine tubular bells and regulated by a mercury pendulum

**\$4000-\$6000**

*Circa 1910 104.5in x 26in x 17in*



**422**

Seth Thomas Clock Co., Thomaston, Conn, "Model 3784" tall clock with the number 37 case in solid mahogany and the Seth Thomas top of the line number 84 tall clock 8 day weight driven movement with Westminster chimes on cathedral bells, Graham dead beat escapement, maintaining power, cut steel pinions, rack and snail strike and beautiful pierced gilt dial with moon phases dial. The 1901 Seth Thomas Movement Catalog in reference to the number 84 movement ... "This movement is equal in every detail to the finest of English makes, and out-classes those of German manufacture"

**\$4000-\$6000**

*Circa 1905 99.25in x 29in x 18in*





**423**

Seth Thomas Clock Co., Thomaston, Conn., custom standing regulator for "H.W. Granger CITY TIME" in a carved walnut case with burl walnut highlights, glazed trunk door flanked by full columns, roman numeral silvered dial with sweep seconds and engraved with retailer's name, 8 day, time only nickel plated movement driven by a nickel plated weight with Graham dead-beat escapement and jeweled pallets, regulated by a single jar mercury pendulum in a nickel plated frame

**\$4000-\$6000**

*Circa 1885 102in x 27in x 12in*



**424**

Wm. L. Gilbert Clock Co., Winsted, Conn., "Regulator No. 16 Standing" jeweler's regulator in a cherry case with burl panel on backboard, carved crest with Egyptian motif, roman numeral white enamel dial with sweep seconds, 8 day, time only Swiss movement with pin wheel escapement, driven by a brass weight, regulated by a three vial mercury pendulum

**\$3500-\$4500**

*Circa 1910 105in x 35in x 13in*



**425**

Germany, a month going grand sonnerie standing Vienna regulator in a carved walnut case with half columns flanking hood and trunk doors, aperture for pendulum bob, all resting on a base with cabinet and compressed ball feet; brass dial with roman numeral silvered chapter ring, engraved brass dial center and subsidiary seconds, 30 day, three train movement driven by three engraved brass weights with matching engraved pendulum bob

**\$2000-\$3000**

*Circa 1880 87.5in x 28.5in x 15.5in*



**426**

Pennsylvania tall clock in walnut case with broken arch top with carved wood rosettes, three turned wooden finials, slender tapered full columns flanking hood door, carved shell decoration on trunk door flanked by reeded quarter columns all resting on base with ogee bracket feet, roman numeral painted metal dial with moonphase, seconds bit and date aperture, 8 day, time and strike, weight driven movement

**\$2000-\$3000**

*Circa 1820 95in x 18.5in x 10in*



**427**

Tiffany & Co., New York, NY chiming hall clock in a flat top carved mahogany case with full columns flanking hood, shell carving above beveled glass trunk door flanked by quarter columns, five panels on each side and one on front of base, screened back-board, brass dial with cast brass spandrels, applied brass roman numerals, silvered chapter ring, subsidiary seconds and two selector subsidiary dials for Chime / Silent and Westminster / Chime on Eight Bells and moon phase, 8 day, three train movement driven by three brass weight chiming the quarter hours on nine tubular bells marked WALTER H. DURFEE and patent date

**\$2000-\$3000**

*Circa 1900 88in x 23in x 15in*



**428**

C.F. Bryce, Paisley, Scotland, drumhead tall clock in a mahogany case with crotch mahogany panel in base and carved surround on hood, glazed trunk door and sides, roman numeral round painted metal dial signed by maker, 8 day, time and strike movement driven by two embossed brass weights

**\$1500-\$2500**

*Circa 1840 83in x 25.5in x 12in*



**429**

New England Roxbury style tall clock in an inlaid cherry case with fretwork top and three brass finials, fluted columns flanking hood door, quarter columns flanking trunk door with brass stop fluting, all resting on a base with French feet, roman numeral painted metal dial with moon phase, 8 day, time and strike, weight driven movement

**\$1500-\$2500**

*Circa 1815 96in x 19.5in x 10in*



**430**

Thomas Brown, Chester, England tall clock in a string inlaid mahogany case with broken arch top with brass rosettes and reverse painted glass under scrolls, two brass finials, full fluted columns flanking hood door, dental molding and ribbon carving below hood, crotch mahogany panels on trunk door and base all resting on bracket feet, brass dial with roman numeral silvered chapter ring, moon phase, brass corner spandrels, date calendar, 8 day, time and strike, weight driven movement

**\$1500-\$2500**

*Circa 1800 92in x 20.5in x 9in*



**431**

Germany, a standing Vienna regulator in an elaborately carved walnut two piece case with burl highlights, arabic numeral brass dial with engraved center, silvered chapter ring and subsidiary seconds, 8 day, time and strike weight driven movement, matching engraved pendulum bob and engraved brass weights

**\$1000-\$1500**

*Circa 1885 93in x 24in x 12.25in*



**432**

Seth Thomas Clock Co., Thomaston, Conn., "No. 5" tower clock for A.S. Hotchkiss furnished by Riggs & Bros., Philadelphia 1881 on brass plaque in a three color painted cast iron frame with Graham deadbeat escapement including pendulum, three gimbals, winding crank and mechanical winding apparatus, serial #231

**\$1500-\$2500**

*Circa 1881 56in x 28in x 17in*

433



434



435



**433**

Aaron Willard, Boston, Mass., Massachusetts shelf clock, mahogany and mahogany veneered case, painted dial, spear hands, 8 day, weight driven brass movement

**\$1500-\$2000**

*Circa 1800 35.75in x 12.5in x 5.5in*

**434**

Birge & Fuller, Bristol, Conn., sharp gothic or steeple on frame mantel clock with candle finials, mahogany veneered case, painted metal dial, moon hands, 8 day, time and strike wagon spring driven brass movement

**\$1000-\$1500**

*Circa 1845 25.75in x 13.75in x 4in*

**435**

Silas Hoadley, Plymouth, Conn, miniature 3/4 column shelf clock, mahogany veneered case with birdseye maple side panels, painted wood dial, 30 hour time and alarm wooden works movement

**\$1000-\$1200**

*Circa 1830 26.5in x 13in x 5in*

436



438



439



441



437



440



**436**  
Terryville Manufacturing Co., Terryville, Conn. iron front shelf clock with a 30 hour, spring driven, time only movement with Silas B. Terry's patented torsion escapement

**\$1000-\$1500**  
Circa 1853 11in x 8.5in x 3.25in

**437**  
J. C. Brown, Forestville Mfg., Co., Forestville, Conn., miniature round gothic or beehive shelf clock, rosewood veneered case, painted metal dial, club hands, 30 hour, time and strike spring driven brass movement.

**\$1000-\$1500**  
Circa 1850 15.25in x 8.75in x 3.75in

**438**  
Ansonia Clock Co., New York, NY, "Gloria Ball Swing" 8 day, time only, spring driven swinging ball clock. Movement is mounted inside a painted brass sphere which has cast ribbon ornament and applied arabic numerals, Louis XV style hands, the lower section in gridiron style with smaller sphere at the bottom, all held aloft by a patinated winged female figure with a lyre, standing on a globe bound with laurel wreath and mounted to an ebonized iron base

**\$1500-\$2000**  
Circa 1900 28.5in x 12in x 10in

**439**  
Ansonia Clock Co., New York, NY, "Crystal Regulator No. 4" mantel clock, gilt brass case with Royal Bonn top and base, enamel dial, fleur de lis hands, 8 day spring driven time and half hour strike movement with visible escapement

**\$1400-\$1800**  
Circa 1906 18.5in x 9.5in x 8in

**440**  
Ansonia Clock Co., New York, NY, "Double Figure Swing", mantel clock, bronze finished spelter figures on a black enameled iron base, paper dial, spade hands, 8 day spring driven time only movement

**\$1200-\$1800**  
Circa 1890 25in x 12in x 7in

**441**  
Ansonia Clock Co., New York, NY, "Huntress Ball Swing" mantel clock in a bronze finished cast spelter case on an ebonized cast iron base, nickel plated upper ball and lower ball, brass serpentine hands and raised numerals, spring driven 8 day timepiece movement.

**\$1000-\$1500**  
Circa 1901 25in x 4.5in x 9in

442



**442**

Ansonia Clock Co., New York, NY, "Senator" cabinet clock, mahogany case, silver dial, fleur de lis hands, 8 day spring driven time and half hour strike movement

**\$1000-\$1500**

*Circa 1904 22in x 16in x 10.5in*

**443**

Ithaca Calendar Clock Co., Ithaca, New York, "No. 3 1/2 Parlor" mantel clock (early model), walnut case with ebonized carving and trim, paper time dial with glass calendar dial, trefoil hands, 8 day spring driven time and strike movement (Noah Pomery, Bristol, Conn) with a H. B. Horton patented perpetual calendar mechanism

**\$1500-\$2000**

*Circa 1875 20.5in x 10in x 5.5in*

**444**

Howard & Company, New York, NY, figural shelf clock depicting Egyptian pharaoh, cast brass case on black onyx base, spherical brass dial with applied roman numerals, steel spade hands, French time and strike movement with brass balance, movement serial no.879

**\$900-\$1200**

*Circa 1898 25in x 8in x 7in*

443



444





**445**

Simon Willard, Roxbury, Mass., patent timepiece or banjo clock, banded mahogany case, painted metal dial, barbed hands, 8 day weight driven brass movement

**Condition:** Banded mahogany case with a dovetailed bottom box in an old finish, original side arms, throat panel attached to case with two screws has some damage to banding in upper left corner, original throat glass with loss to background, bottom tablet and finial replaced, original painted dial has some small paint loss on outer gold painted ring and some small chips between 6 and 7 o'clock with some very light scattered soiled areas around the dial, original hands. Dial attached to case with two L turns, T-bridge attached to case with two through bolts. Solder repair to pendulum crutch wire.

**\$4000-\$6000**

*Circa 1805 29.5in x 9.75in x 3.25in*



**446**  
Atkins Clock Co., Bristol, Conn, "Atkins Extra" hanging regulator clock in rosewood veneered case, 18 inch painted metal dial, maltese hands, 30 day double weight driven timepiece movement

**\$1800-\$2500**  
Circa 1875 55in x 25.5in x 5.5in



**447**  
Joseph Ives, New York, "Looking Glass" wall clock, mahogany and birdseye maple case, painted metal dial, 8 day, time and strike weight driven iron and brass movement with roller pinions

**\$1200-\$1600**  
Circa 1822 54in x 20in x 6in



**448**  
C.E. Beacham, Sisters, Oregon, miniature girandole hanging timepiece, mahogany and gilt case, glasses by Tom Moberg, enameled dial, gilt serpentine hands, 8 day weight driven brass timepiece movement.

**\$1700-\$2200**  
Circa 1990 23in x 6.5in x 3in



**449**  
J. C. Brown, Forestville Mfg Co., Forestville, Conn., hanging lyre timepiece, mahogany veneered case, painted metal dial, club and pointer hands, 8 day, spring driven brass movement.

**\$1200-\$1600**  
Circa 1848 28.25in x 12.75in x 4in



**450**  
George Jones, New York, Vienna regulator style wall clock, walnut and walnut veneer case, roman numeral white enamel dial with blued steel moon hands and sweep seconds, weight driven brass movement with pin wheel escapement, gridiron pendulum, and brass clad weight

**\$1000-\$1500**  
Circa 1865 58.5in x 15.5in x 7.75in



**451**  
E. Howard & Co., Boston, Mass, special order wall clock for Union RR Station in Denver, walnut case, painted metal dial, diamond form hands, 8 day weight driven timepiece movement

**\$3000-\$5000**  
Circa 1900 65.5in x 29in x 11.75in





**452**  
 Massachusetts or New Hampshire, Willard school "No. 1" size hanging banjo clock or patent timepiece in a mahogany case with reverse painted and gold leafed tablets, 12in roman numeral painted metal dial, 8 day, time only precision movement driven by a single brass weight with unusual pendulum rating and anti-friction crutch mechanisms, gilded pendulum rod

**\$2500-\$3000**  
 Circa 1840 50in x 20in x 6in



**453**  
 E. Howard & Co., Boston, Mass., "No. 10 Regulator" hanging figure eight clock in a walnut case with reverse painted and gold leafed throat and lower tablets, roman numeral painted metal dial, moon hands, 8 day, weight driven brass movement

**\$2000-\$2500**  
 Circa 1890 34in x 11.25in x 5in



**454**  
 E. Howard & Co., Boston, Mass, for J.E Caldwell, Philadelphia, "Marble Front No. 17" gallery wall clock in a wooden case with marble dial, trefoil hands, 8 day timepiece movement with counter-balance for the hands, F/S regulation nut at top center of case.

**\$1500-\$2000**  
 Circa 1915 43.5in x 24.5in x 5in



**455**  
 Ithaca Calendar Clock Co., Ithaca, New York, "No. 2 Bank", double dial calendar clock, walnut case, paper on metal dial, maltese hands, 8 day, double weight driven brass movement

**\$2000-\$3000**  
 Circa 1890 61in x 20.5in x 9in



**456**  
 Ithaca Calendar Clock Co., Ithaca, New York, "Regulator No. 1", hanging calendar clock, walnut case, paper on metal dials, maltese hands, Welch, Spring & Co. weight driven 8 day timepiece movement and H. B. Horton's patented perpetual calendar clock mechanism.

**\$1200-\$1600**  
 Circa 1875 50in x 20in x 6in



**457**  
 Seth Thomas Clock Co., Thomaston, Conn, "Jupiter", hanging clock, oak case with burl front panel, painted metal dial, fleur de lis hands, and 8 day, weight driven time and strike brass lyre movement with attachment for a moon phase dial

**\$2500-\$3500**  
 Circa 1897 59in x 19in x 7.5in



**458**

Seth Thomas Clock Co., Thomaston, Conn, "Regular No.3" made for the Webb C. Ball Co., Cleveland, Ohio (who provided these clocks to the B & O Railroad), oak case, painted metal dial, spade hands, 8 day weight driven time only movement with a deadbeat escapement and maintaining power

**\$1200-\$1600**

*Circa 1920 42in x 19.5in x 6in*



**459**

Seth Thomas Clock Co., Thomaston, Conn, "Regulator No. 30" hanging clock (made for the Webb C. Ball Jewelry Co, Cleveland, OH), oak case, painted metal dial, spade hands, 8 day weight driven time only brass movement with deadbeat escapement and maintaining power

**\$1000-\$1500**

*Circa 1890 49in x 19in x 7.5in*



**460**

Seth Thomas Clock Co., Thomaston, Conn., "Lunar" hanging clock in an oak case with arabic numeral painted metal dial, spade hands, 8 day, time and strike weight driven brass movement.

**\$800-\$1200**

*Circa 1900 41in x 18.5in x 7in*



**461**

Ulysse Nardin, LeLocle, for the Batori Computer Co. Inc., New York, a rare and important "Sun - Star Chronometer" aviator's navigational watch with outer, protective case, 30 jewels, stem wind and pin set, adjusted to five positions, cotes de Geneve decorated, rhodium plated, two train movement with differential, controlled by a single lever escapement with compensating alloy balance and micrometric regulator in a brass, snap back and bezel, open face case with black finish, the bands with crowns and pushers for adjusting the seconds and hour angle displays, black 24 hour dial with spade and poker hands, constant seconds at 6:00, sidereal hour angle arc degrees and minutes displayed at 3:00 and 9:00 respectively, the central red hand indicating arc seconds at the periphery, serial #124505 (movement), #001(Batori Computer Co. number), 70mm, together with it's original cylindrical, velvet lined protective container with identification plaque, case, dial and movement signed

**Condition:** CASE: Minor losses to black finish on case band, pendant, and bow; A few spots of corrosion on pendant with corresponding loss of finish; Inside of case back with minor fingerprint staining; Cuvette edge and adjacent surface with localized, minor marks and scratches from case knife. DIAL: Very good. HANDS: Very good. MOVEMENT PLATES: Very good; Appears never to have been disassembled. MOVEMENT FUNCTION: Gummy, dirty; Will run briefly; Needs service. Outer case very good, with minor marks and fine scratches; Top with small gouge above plaque. Developed as a navigational tool for aviators, the Sun-Star chronometer was intended to make navigational computation faster and simpler than the methods using air almanacs or slide rules. Invented by Oscar Batori and Raymond Nardin, the watch contains two separate trains, controlled by a single escapement. A planetary differential allows for the two trains to indicate solar time and sidereal hour angle, the sidereal being represented in arc degrees, minutes and seconds. The chronometer was tested at the Greenwich Observatory and passed tests for accuracy, although it seems not to have caught on among aviators. In vol. 17, No.1 of the Journal of Navigation, Air Marshal Sir Edward Chilton stated that "Current astro techniques using the periscopic sextant require altitude and azimuth to be precomputed in order to set these values initially on the sextant. When the chronometer was used to assist in precomputation, increments of G.H.A. had to be applied to the chronometer reading in order to obtain the G.H.A. of Aries for the time of the astro shot. Used in this way, the chronometer offered little advantage over the air almanac." A Ministry of Aviation test at Boscombe Down stated that "The chronometer was found useful when sighting celestial bodies on an opportunity basis, when up to 20 seconds of time was saved in obtaining L.H.A.; a process which takes about 30 seconds using the air almanac". In addition to this relatively lukewarm reception, others were also working on timekeepers that would simultaneously display solar and sidereal time, including a solar - sidereal synchronous motor for driving quartz clocks, developed in the Soviet Union by Smirnov, Stepanov and Tovchigrechko. As a result of these and possibly other factors, the Sun - Star chronometer was not a success, and very few were produced. The highest serial number known to us is 004, sold at Sothebys Geneva, Nov. 12, 2020, lot 616. That example appears to have been altered, the case now gold plated, and with a glazed cuvette. It also lacks the outer case. Provenance: Oscar E. Batori, to his son Louis E. Batori, thence to the consignor.

**\$10000-\$15000**

*Circa 1960 2.25in x 4.5in*



**462**

Brockbanks & Atkins, London, a good early 19th century 8 day marine chronometer, 13 - 15 jewel, free sprung, reverse fusee movement winding clockwise, and with Earnshaw's spring detent escapement with fine adjustment by a screw in the banking piece foot, cut bimetallic three arm Brockbank balance with blued, helical balance spring and diamond endstone, the top plate signed "Brockbanks & Atkins Eight Days" and "No. 883", the barrel bridge engraved "London", surrounded by flourishes, signed roman numeral silvered dial with wind indicator, subsidiary seconds, and blued steel spade and poker hands, the movement with protective cylinder and contained in a gimballed brass bowl with flat, knurled bezel and convex glass, the bottom with shuttered winding aperture, all housed in a three tier mahogany box with contrasting edging and brass furniture, ratchet key, the inside of the lid with period printed Brockbanks & Atkins "General Directions for the use of Chronometers", serial #883

**\$3500-\$5500**

*Circa 1830 7.25in x 7.25in x 7.25in*



**463**

Onesime Dumas, successor to Gannery, St. Nicholas d'Aliermont, a small, mid 19th century 49 hour marine chronometer, 11 jewel, free sprung fusee movement with Earnshaw's spring detent escapement, cut bimetallic chronometer balance with blued, helical balance spring, cylindrical compensation weights and diamond endstone, the top plate signed "Dumas No. 105", roman numeral silvered dial signed "Dumas Sr. de Gannery", with wind indicator, subsidiary seconds at 6:00, and blued steel Breguet style hands, in a gimballed brass bowl with shuttered winding aperture, and housed in a three tier mahogany box with brass handles, serial #105, and with ivory plaque marked "1050 L.Leroy & Cie", the inside with service label from Leroy dated 1937

**\$1800-\$2500**

*Circa 1855 7in x 6.5in x 6.5in*

**463**



**464**



**464**

Ulysse Nardin, Locle, for Favre, Brandt & Cie., Osaka, a 20th century boxed two day marine chronometer, 13 jewel brass movement with spotted plates, spring detent escapement, cut bimetallic Guillaume balance with cylindrical compensation weights, and white helical balance spring, roman numeral, signed, dead silvered dial with subsidiary chapters for seconds and state of winding, and blued steel spade and poker hands, in a gimballed brass bowl, and contained in a mahogany box with brass campaign hardware, the front with white plastic plaque signed "Ulysse Nardin Suisse 2272", with winding key, serial #2272

**\$1000-\$1500**

*Circa 1930 6.625in x 7.25in x 7.25in*

**465**

**465**

Patek Philippe, Geneva, for Kelvin Hughes, London, a quartz chronometer desk timepiece, the square mahogany case with glazed lid, round, black painted 24 hour dial with peripheral seconds, the inner chapter showing the hours and minutes, gray painted luminous stick hands, and battery powered quartz movement, serial #979 35/4

**\$800-\$1200**

*Circa 1980 3.75in x 7.25in x 7.25in*





**466**  
 Charles Fasoldt, Albany, N.Y., a two train pocket chronograph with jumping fifth seconds, 20 size, 18 jewels, stem wind and key set damascened nickel bar movement with Fasoldt's patent coaxial escapement, cut bimetallic balance with gold screws, fancy gold jewel settings and gold micrometric regulator, in a nickel, hinged back and bezel open face case with glazed cuvette, roman numeral, double sunk white enamel dial with wind indicator at 4:00, constant seconds at 8:00, and 60 minute register at 12:00 with concentric minute and seconds hands, and a subsidiary chapter within the register displaying jumping fifth seconds, the foudroyant hand making a complete revolution in two seconds, plum colored steel Breguet style hands, serial #502

**Condition:** CASE: Incorrect for this movement; Minor dings and pin pricks; Very fine scratches on outer surface of case; Front cover with minor gap at band when closed; Front cover hinge pin replaced. DIAL: Hairlines and a few minor losses; Lacking one dial foot. HANDS: Chronograph minute counter, foudroyant, and wind indicator hands replaced. MOVEMENT PLATES: Very fine scratches on plate; Minor spotting; A few small spots of corrosion on bottom plate; Winding wheels with a few small spots of oxide; Time ratchet wheel with very fine concentric scratches; Chronograph barrel with marring from contact with intermediate winding wheel; Screw heads with minor losses to blue. MOVEMENT FUNCTION: Dirty; Will run, low balance amplitude; Stops with cuvette in place or with back snapped shut; Setting functional; Winding stiff. COMPLICATION FUNCTION: Chronograph mechanism complete but not running, needs service. This watch is one of approximately six of this model believed to have been completed by Charles Fasoldt, the series numbered 500 - 505. Each of the known examples have differences from the others, which is characteristic of Fasoldt's propensity for experimentation and improvement. In this example, both trains are wound simultaneously by the crown, the click and stop work on the going barrel serving also to maintain mainspring tension and limit winding of the chronograph mainspring. The springs in number 503 are also wound by the crown, but independent of each other, each with their own clicks and stop work. A third example is key wound, and has a very different bridge layout. Note that the serial number of this lot appears only on the underside of the bottom plate, and not on a bridge as was his practice. This may be an indication that this movement was unsold inventory.

**\$5500-\$7500**  
 Circa 1875



**467**  
 Nashua Watch Co., Nashua, N.H., a mid 19th century 20 size pocket watch movement, 19 jewel gilt plate movement with Stratton's safety barrel and maintaining power, Geneva stop work, and cut bimetallic balance with gold screws, and roman numeral, single sunk white enamel dial, serial #1090

**Condition:** very dirty and with very fine scratches, a few short scratches near the winding arbor, gilding good, with minor spotting and a small spot of corrosion at end of serial number, bright work with localized, minor oxide, small chip out of dome on third wheel upper hole jewel, does not appear to affect the pivot, good balance staff, power to escapement, should run with proper service, dial with a few faint hairlines, beginning just to the left of the numeral 12, and continuing toward 1 - 2:00. Visible assembly numbers are correct, the underside of the balance cock stamped 190, as are the underside of the top plate, and top of the bottom plate. A very rare American movement.

**\$5000-\$8000**  
 Circa 1860



**468**

American Waltham Watch Co., Waltham, Mass., a model 1888 pocket watch with heavy gold case, 16 size, 19 jewels, stem wind and set, ornately damascened nickel plate movement with lever escapement, cut bimetallic balance with gold screws, gold jewel settings, and Fogg's tadpole regulator in a 14 karat, rose gold hunting case, the covers with circular, central reserve, with "snailing pattern" reeding radiating out from the reserve edge, continuing onto the band, and forming an unbroken line from the front to the back of the case, the front with engraved monogram, and arabic numeral, outer red 5-minute markers, single sunk white enamel dial signed "A.W.W.Co." in old English font, blued steel spade and whip hands, serial #6500695, 119.9g TW

**\$1800-\$2400**

*Circa 1895*



**469**

Auburndale Watch Co., Auburndale, Mass., an "Auburndale Rotary" pocket watch, 19 size, 15 jewel, stem wind and lever set nickel plate movement with lever escapement and cut bimetallic balance with gold screws in a base metal, snap back and bezel open face case, runic white enamel dial marked "H.L. Cortelyou NY", with blued steel spade and whip hands, serial #540

**\$1500-\$2000**

*Circa 1880*



**470**

Vacheron & Constantin, Geneva, a good mid 20th century rose gold wrist watch, 18 jewels, manual winding, cotes de Geneve decorated rhodium plated movement with lever escapement, cut bimetallic balance with gold screws and whiplash micrometric regulator in an 18 karat, round, rose gold case with teardrop lugs and Vacheron Constantin alligator strap, arabic numeral and elongated pyramid marker matte silver dial, and gold baton hands, serial #424807 (movement), 274693 (case), 35mm, 35.4g TW

**\$2000-\$2500**

*Circa 1950*



**471**  
 Piquet & Meylan, Geneva, a rare, early 19th century musical pocket watch with automata, key wind and set gilt movement with cylinder escapement, now in an 18 - 20 karat multicolor gold consular case with paste set bezel, the back featuring an urn on a pedestal, a dog, flying birds and a basket, polychrome enamel dial with roman numeral chapter ring above multicolor gold automata featuring a woman with harp at right and a boy with lute at left, set against a colorful landscape background with buildings and mountains, 41mm, 53.2g TW

**Condition:** CASE: Case has housed another movement; Small hole in bezel near catch; Interior abraded to clear edge of dial; Pendant with a few shallow file marks; Bezel lacking 13 stones; Bow with minor bend; Precious metal content tested. DIAL: Professional restoration to chapter ring; Base of casting with figures filed to fit case. HANDS: Hour with oxide; Minute and seconds replaced. MOVEMENT PLATES: Fine scratches on plate; Spotting; Some steel components with very shallow pitting. MOVEMENT FUNCTION: Running order (winds, sets and ticks). COMPLICATION: Functions properly. The watch is recently restored, and ready to enjoy.

**\$20000-\$30000**  
 Circa 1820





**472**  
Bouvier Freres, Geneva, a fine and rare polychrome enameled gold pocket watch with automata, key wind and set, gilt full plate fusee movement with verge escapement, in an 18 karat, rose gold, consular open face case with enameled bezels, slide to start the automata, and glazed back revealing a gold plate featuring an urn with polychrome enamel flowers, engraved floral ornament with white enamel, and scrolling, foliate border with two birds flanking an aperture with painted landscape background, windmill, well pump and processional automata, featuring a man drinking from a bottle, a man driving a mule, and a man bowing, signed white enamel dial with arabic chapter ring at bottom, the polished steel balance visible at the upper left, and regulation dial at upper right, with gold hands, serial #6379, 54mm, 89.8g TW

**Condition:** CASE: Four minor dents, front, below 5:00; Two very small dents, case back, opposite dents at front; Losses to bezel enamel on front; A few minor scratches; Slide screw with rust; Bow loose; Precious metal content tested. DIAL: A few hairlines at upper right; Chips at automata winding arbor; Minor losses at dial screw. HANDS: Lacking minute. ENAMEL PLATE: Some fine cracks in black enamel, visible in raking light; two very small losses to black enamel, not full depth; Two tiny losses to blue border. MOVEMENT PLATES: Scratches on plate; Dirty, gummy; Some steel components with minor rust. MOVEMENT FUNCTION: Not running, good balance staff, needs service; Will run if cannon pinion is turned clockwise. . COMPLICATION: Automata functional; Mainspring slipping, mainspring unhooked or broken.

**\$8000-\$12000** Circa 1800



**473**  
George Prior, London, for the Turkish market, a fine and rare triple case pocket watch with polychrome enamel ornament, key wind and set, gilt full plate fusee movement with verge escapement, pierced and engraved balance cock and slide plate, and crested Egyptian pillars, in a 22 karat triple case, with scalloped, transparent and opaque polychrome enamel ornamented cases with London hallmark and date letter for the year 1803, the back of the middle case with well executed landscape scene with a stream and stone bridge, the pendant and catch buttons set with rose cut diamonds, signed, Turkish numeral white enamel dial with gold beetle and poker hands, together with a gold, crank style key, 48.5mm, 114g TW

**Condition:** CASE: Outer with with gap above hinge and catch when closed; Enamels in very good condition with very minor losses to two of the red flowers on the middle case; Inner case with very fine scratches and small abrasion from a previous gold test; Diamonds tested; Precious metal content marked. DIAL: Very good. HANDS: Very good. MOVEMENT PLATES: A few very fine scratches on plate; Two marks near pillar at end of signature. MOVEMENT FUNCTION: Not running, fully wound, escapement has power, good staff, will run with gentle pressure on contrate wheel, needs service. Key with bend.

**\$8000-\$12000** Dated 1803





**474**  
Simon Bartram, London, a rare mid 17th century silver verge pocket watch with date, key wind and set, full plate fusee movement with pre balance spring verge escapement, tulip pillars, pinned balance cock with pierced and engraved floral and foliate ornament, worm and wheel mainspring set up mounted to the top plate, and decorative, blued steel components, the top plate engraved "Simon Bartram Londini", contained in a silver, gadrooned, sea urchin inspired case with swivel pendant and ring bow, split bezel, bead ornament on a matted ground, and the back with a central, six lobed ornament surrounding a ring of beads and flower, the key hole with rotating shutter, roman numeral silver dial with floral, engraved center and single blued steel hand, a separate chapter at the periphery with arabic numeral date display, indicated by a blued steel pointer, 48mm

**Condition:** CASE: Tarnish; Minor wear; A few minor dings; Bezel with gap when closed; Bottom with hole for locating pin, pin absent; Bow replaced. DIAL: Minor tarnish and a few scratches; Date chapter lifted slightly from plate, 6 - 9:00. HANDS: Minor oxide. MOVEMENT PLATES: Minor marks and scratches; Shallow punch marks and scratches at engraved signature; Balance cock now screwed to plate; Balance cock foot with added steady pins; Blued steel mount for set up worm with loss at left and minor oxide. MOVEMENT FUNCTION: No tension on mainspring, probably unhooked; Runs with pressure on train. Simon Bartram (1598 - 1667) was master of the Clockmakers Company 1650 - 51. The Metropolitan Museum of Art has in its collection a watch with identical case by Robert Smith. See <https://www.metmuseum.org/art/collection/search/194071>

**\$4000-\$6000** Circa 1650



**475**  
Switzerland, a very attractive book form pendant watch with pin, the 18 karat gold case with chasing and engraving simulating page edges and leather spine, the front with with scrolling tendrils in gold on a cobalt blue enamel ground, and a ring of rose cut diamonds surrounding the roman numeral white enamel dial with plum colored spade and poker hands, the back with vermicelli engraving surrounding a central arabesque ornament, also with cobalt blue enamel, and the interior with three accordion style folding oval picture frames, and 10 jewel, key wound and set gilt bar movement with cylinder escapement, all hanging from a lyre form, 14 karat green and yellow gold pin with floral ornament on a blue enamel ground, book measures 26 x 30mm, 35.5g TW

**Condition:** CASE: Front with a few minor losses to enamel; Back with loss to the majority of the blue enamel within the arabesque ornament, and losses to border; Catch with minor enamel loss; Lower right corner of case with minor separation; Photo frames with bends, one with split at top; Pin with minor enamel damage at upper left; Diamonds tested; Precious metal content marked. DIAL: Very good. HANDS: Very good. MOVEMENT PLATES: Hazy; Very fine scratches on plate; Barrel bridge with minor marring; Regulator and endstone setting with a few specks of oxide; Regulator with localized abrasion. MOVEMENT FUNCTION: Fully wound, ticks briefly, needs service.

**\$4000-\$6000** Circa 1860



**476**  
 Robin, a Paris, a very attractive, slim, late 18th century pocket watch, 6 jewels, key wind and set, gilt full plate fusee movement with cylinder escapement in an 18 karat, yellow gold open face consular case, the bezel with a border of split pearls and a band of blue green enamel, the back with a deep blue guilloché enamel ground behind a polychrome scene featuring a young woman in colorful dress, seated on a rock in a landscape, and a lamb investigating a rose bush, the image enframed by two rows of split pearls, the pendant also with enamel ornament, roman numeral white enamel dial with gold Breguet style hands, 53mm, 68.7g TW, with it's original enamel ornamented gold winding key, dial and movement signed

**Condition:** CASE: One pearl on case back with damage; Case back enamel with scratches and minor loss; Pendant enamel with losses; Front cover with slight gap at back when closed, 9:00 - 3:00; Crystal with minor scratches and chips at 1:30 and 7:30; Precious metal content tested; Key with losses to enamel. **DIAL:** Minor scratches; Chips at winding arbor. **HANDS:** Minor bends; Minute repaired. **MOVEMENT PLATES:** Fine scratches on plate; A few more significant short scratches near pillar and regulator scale; Dirty. **MOVEMENT FUNCTION:** Running order (winds, sets and ticks).

**\$3000-\$4000** Circa 1795



**477**  
 Switzerland, a good early 19th century bras en l'air pocket watch with day/ date display, the gilt, full plate fusee movement with verge escapement in a gilt, consular open face case, arabic numeral, guilloché pattern blue and white enamel dial with a standing male figure, his arms indicating the hours and minutes, and with two monkeys at his feet, one indicating the day, and the other the date, all arms raising to display the information when the pendant is depressed, the date monkey's tail rotating with the date, 56mm

**Condition:** CASE: Band with very shallow dent; Dings; Fine scratches on outer surface of case; Gilding with wear, and with some exposure of base metal. **DIAL:** Minor edge flakes, concealed by bezel; Minor scratch at day display; Chips at winding and setting arbors, concealed by figures. **HANDS:** Arm indicating the hour with repair. **MOVEMENT PLATES:** Top plate with scratch and mark at edge; Tops of pillars with loss to gilding; Coqueret and regulator square with spots of rust. **MOVEMENT FUNCTION:** Running order (winds, sets and ticks); Arms raise when pendant is depressed; Service and adjustment needed.

**\$3000-\$5000** Circa 1800



**478**  
 Jacob Auch & Sohn, Weimar, an unusual early 19th century pocket watch with passing strike, 4 jewels, key wind and set, gilt full plate movement with duplex escapement, Earnshaw balance with movable compensation weights, provision for a single blow on a gong at one hour intervals, and dated 1819 under the balance bridge, in a silver, hinged back and bezel open face case with rotating crown to reset the striking, roman and arabic numeral white enamel regulator dial with blued steel hands, 62mm, dial and movement signed

**Condition:** CASE: Dirty; A few shallow dents; Minor dings and pin pricks; Scratches on outer surface of case; Inside of back with two acid testing marks; Inside of case with fine scratches; Bezel with minor gap at pendant when closed. DIAL: Fine scratches; A few more significant scratches at seconds bit. HANDS: Minute replaced and with losses to blue; Seconds replaced. MOVEMENT PLATES: Dirty; Fine scratches on plate; More significant marks and scratches at pillars; Screws with specks of oxide; Balance with specks of oxide and corrosion; Gong with specks of oxide. MOVEMENT FUNCTION: Ticks very briefly; Movement dirty, gummy; Hammer lifting wheel slipping; Needs service.

**\$2000-\$3000** Dated 1819



**479**  
 Cartier, France, an early 20th century "Gouvernail" pocket watch with Colt Patent Firearms family provenance, 18 jewels, stem wind and set, extra slim gilt bar movement with lever escapement and cut bimetallic balance with gold screws, in an 18 karat, yellow gold, snap back and bezel open face case, with six sapphire cabochons, five in settings fixed to the band, and one in the crown, the case back with polychrome enamel renderings of the New York Yacht Club flag, and the private signal flag of Charles Leonard Frost Robinson, flown aboard his cutter "Hester", arabic numeral, engine turned, dead silvered dial with blued steel moon hands, serial #4043, 45mm, 54.9g TW, dial and movement signed

**Condition:** CASE: Small dent, back; Dings; Scratches on outer surface of case; Enamel good; Precious metal content tested. DIAL: Very good. HANDS: Very good. MOVEMENT PLATES: Very fine scratches on plate; Minor toning at edge of barrel bridge and balance cock foot; Minor haze. MOVEMENT FUNCTION: Running order (winds, sets and ticks); Good balance amplitude, but not serviced recently. Charles Leonard Frost Robinson (1874 - 1916) was president of the Colt Patent Firearms Mfg. Co. from 1911 - 1916. In 1896, Robinson married Elizabeth Hart Jarvis Beach, who was named after her aunt Elizabeth Hart Jarvis Colt, the wife of Samuel Colt. The watch has been handed down through successive generations of the family, to the consignor.

**\$2500-\$3500** Circa 1910



**480**

Robert Roskell, Liverpool. a large, silver cased pocket chronometer, 15 jewels, gilt full plate fusee movement with Earnshaw's spring detent escapement, Earnshaw balance with diamond endstone, and blued steel helical balance spring in a sterling silver, hinged back and bezel, reeded edge, engine turned open face case with Chester hallmark and date letter for the year 1823, roman numeral white enamel dial with gold spade and poker hands, serial #295/36994, 61mm

**Condition:** CASE: Very fine scratches on outer surface of case; A few minor bumps and dings to band; Fine scratches on dome at winding arbor; Precious metal content marked. DIAL: One faint, short hairline below serial number and a minor flake at center of seconds bit, otherwise very good. HANDS: Very good. MOVEMENT PLATES: Very fine scratches on plate; Fine circular scratch from mainspring set up click; Movement dirty; Third wheel jewel screw with spot of rust; Catch with minor oxide. MOVEMENT FUNCTION: Running order (winds, sets and ticks).

**\$2500-\$3500**

**481**

John Arnold & Son, London, a late 18th century pocket chronometer, 16 jewels, key wind and set, gilt full plate movement with Arnold's spring detent escapement, freesprung cut bimetallic balance with diamond endstone, large gold screws, blued steel balance spring with double overcoil, and decorative pierced and engraved balance cock in a later, purpose made sterling silver open face case with Chester hallmark and date letter for the year 1904, with later, purpose made roman numeral, single sunk white enamel dial with gold spade and poker hands, serial #347/648, 52mm

**\$2000-\$3000**

*Circa 1795*

**482**

Molyneux & Sons, London, a gold pocket watch with Savage two pin lever escapement, 8 jewels, gilt full plate fusee movement with polished steel balance and diamond endstone, in an 18 karat, yellow gold, hinged back and bezel, reeded edge, engine turned open face case, with engraved monogram on back, London hallmark, and date letter for the year 1830, matted gold dial with polished roman numerals and gold Breguet style hands, serial #1384, 44mm, 79.6g TW

**\$2000-\$3000**

**483**

Christian Friedrich Tiede, Berlin, a 19th century gold pocket watch with unusual lever escapement, 19 jewels, key wind and set, frosted gilt bar movement with cut bimetallic balance and unusual lever escapement, the pallets with long impulse planes, escape wheel with stepped teeth, and resilient fork, in an 18 karat, yellow gold, hinged back and bezel engine turned open face case with gold cuvette signed "Tiede", roman numeral, single sunk white enamel dial with plum colored steel spade and poker hands, 46.5mm, 68.9g TW

**\$1800-\$2500**

*Circa 1865*





**484**

France, an early 19th century gold quarter repeating pocket watch signed Breguet, 4 jewels, key wind and set, quarter repeating gilt Lepine calibre movement with cylinder escapement in a 20 karat, yellow gold, hinged back and bezel, reeded edge, engine turned open face case with gilt cuvette bearing a spurious engraved signature, roman numeral engine turned gold dial with blued steel Breguet style hands, serial # 491, 55mm, 129.8g TW

**\$1800-\$2400**  
Circa 1810

**485**

Switzerland, a rare early 19th century pocket watch movement with Pouzait lever escapement signed Breguet & Fils, 16 jewels, Burdess style lever wind and wheel set gilt full plate fusee movement with Pouzait lever escapement, engraved balance cock, and gold, five arm seconds beating balance, in a silver, hinged back and bezel, reeded edge display case, roman numeral white enamel dial with blued steel hands, 58mm

**\$1800-\$2500**  
Circa 1810

**486**

France or Switzerland, an early 19th century souscription style pocket watch signed Breguet et fils, key wind and manual set, gilt Lepine calibre movement with cylinder escapement and parachute shock protection in a 16 - 18 karat, rose gold, hinged back and bezel, reeded edge open face case with spurious signature, location, and serial number engraved on gilt cuvette, arabic numeral white enamel dial also signed Breguet, and a single, blued steel Breguet style hand, serial #726, 59mm, 137g TW

**\$1600-\$2200**  
Circa 1810

**487**

For the American market, an early 19th century lever fusee pocket watch with Massey I escapement signed Edward Massey, 6 jewels, key wind and set, gilt full plate movement with lever escapement employing Massey type I lever and roller, with steel balance and diamond endstone, the balance cock engraved "Patent" and with an American eagle, in a 14 karat, yellow gold, reeded edge, engine turned open face case with Chester hallmark, spurious 18 karat mark, and date letter for the year 1816, roman numeral gold dial with bold, polished numerals on a matted ground and engine turned center, with blued steel hands, serial #1143, 48.5mm, 115.7g TW

**\$1400-\$1800**

**488**

Hessen, a Paris, an 18th century gold quarter repeating pocket watch, key wind and set, gilt full plate fusee movement with verge escapement and pierced and engraved balance bridge in an 18 karat, rose gold consular open face case with applied multicolor gold ornament, and the back with sunburst engraving, roman numeral, outer black 5-minute markers white enamel dial, and fancy, stone set hands, serial #177, 47.5mm, 94.9g TW

**\$1300-\$1600**  
Circa 1780

**489**

Goret, a Paris, an early 18th century oignon pocket watch, gilt full plate fusee movement winding through the dial with verge escapement, large balance bridge with baroque ornament and aperture for viewing the mock pendulum, Egyptian pillars, and decorative blued steel screws and case latch spring, gilt case with baroque ornament, the back with scene featuring cupid hovering over a satyr and sleeping woman, after Watteau's "Jupiter and Antiope", gilt dial with decorative center and roman numeral white enamel cartouches, and single brass arrow form hand, 56mm

**\$1200-\$1600**  
Circa 1700



**490**

Truitte & Mourier, an 18th century skeletonized verge pocket watch, key wind and set skeletonized gilt fusee movement with verge escapement, engraved balance cock, potence plate, and pierced, engraved barrel cap in an 18 karat, rose gold, engraved consular open face case with glazed back, and signed roman numeral, outer arabic 5-minute markers white enamel dial with gold Louis XIV hands, 44mm, 50.2g TW

**\$1200-\$1600** Circa 1770



**491**

R. Ganthony, London, a decorative 19th century gold pocket watch, 11 jewels, key wind and set, gilt 3/4 plate movement with lever escapement and gold balance with diamond endstone in an 18 karat, yellow gold, hinged back and bezel, scalloped and engine turned open face case with fancy bow, the back engraved "Henry DeGroot 1832" and "Robert M. Robinson 1867", with London hallmark and date letter for the year 1830, roman numeral white enamel dial with blued steel Breguet style hands, serial #3761, 45mm, 66.9g TW

**\$1000-\$1500**



**492**

Thomas Earnshaw, London, an unusual late 18th century cylinder pocket watch, 4 jewels, key wind and set, gilt full plate movement without ornament, the balance cock signed "Thos. Earnshaw London 2870", with cylinder escapement, the balance with diamond endstone and unusual, shaped brass regulator, in a sterling silver, open face pair case with London hallmark and date letter for the year 1796, and the makers mark of John Turner, roman numeral white enamel dial with gold, pierced spade hands, serial #2870, 55mm

**\$1000-\$1500**



## Schmitt Horan & Co. General Terms & Conditions

**SALES TAX and BUYER'S PREMIUM:** You agree to pay the Buyer's Premium on every item purchased. The Buyer's Premium is a percentage of the hammer price of each item added to the sale total for that item. There is NO sales tax in New Hampshire. The Buyer's Premium is 20% of the hammer price.

**SPECIAL EVENT:** The special event portion of the May 6 auction (Lots 1 - 342) will not offer phone bidding, internet bidding, nor absentee bidding. Bidder must be in attendance or have someone represent them in attendance to bid. See list of recommended Buyer's Agents below for suggestions.

**LIVE BIDDING:** The May 6, 2023 auction is open to the public and live in-person attendance is allowed and encouraged. On items after lot 342 we also offer several alternatives to attending in person, including our own live bidding software at [bids.schmitthoran.com](https://bids.schmitthoran.com). You may also bid live at [www.invaluable.com](https://www.invaluable.com) or [www.liveauctioneers.com](https://www.liveauctioneers.com) or [www.bidsquare.com](https://www.bidsquare.com). There is an extra 5% fee charged by the third party bidding services for internet bidding. The total Buyer's Premium, which includes the 5% fee, on all third party purchases is 25%.

**PHONE BIDS:** On items after lot 342 you may register to bid via telephone. It is necessary to contact us at least to 72 hours prior to the auction to arrange for phone bidding. Pre-registration is required.

**ABSENTEE or LEFT BIDS:** In all cases, a left or absentee bid will be executed for as low a price as possible. Many absentee bids lose by only one bid, a frustration that can be reduced if a live person has authority to bid "one more time". Therefore, we offer **PLUS ONE (+1)** bidding format to allow our absentee bidders to be more competitive, contact us for details. Bid forms are available on our web page or in the rear of the catalog. You may submit your bid online, by fax, snail mail or e-mail no later than 48 hours prior to the start of the auction to: [bids@schmitt-horan.com](mailto:bids@schmitt-horan.com). Absentee bidding and phone bidding services are provided by Schmitt Horan & Co. as a courtesy to our clients. Schmitt Horan & Co. cannot be held responsible or liable for failure to receive or execute absentee bids.

**PAYMENT FOR SUCCESSFUL BIDS:** We will normally notify successful bidders within three business days of the auction. We use e-mail to notify bidders and postal mail if a client does not have e-mail available. Personal checks drawn on a U.S. bank are acceptable. We also accept VISA, Mastercard, Discover, American Express and Paypal, all subject to our standard 20% Buyer's Premium. Note that shipping charges are extra and will be billed by Schmitt Horan & Co. or a third party at the time of shipment. Payment is due on receipt of invoice, and no later than 30 days from the date of the auction. Items not paid for within the 30 days from the date of the auction will be charged a 2% monthly interest rate on the balance due. Large international transactions may be performed via wire transfer. Details available upon request.

**ITEMS & ACCESSORIES:** It is the buyer's responsibility to verify that he / she has received accessories that may be separate when taking possession of their merchandise. Items purchased by bidders off site are not available for pick up during the sale at the auction hall.

**ESTIMATES and RESERVES:** After each description, we have indicated a high and low dollar estimate that should be used as a general guide. The final price may vary considerably from these estimates. There are few items in this sale with a reserve, or confidential minimum selling price, established with the consignor or vendor. Items failing to sell will be noted in the results sheet as \$0.00.

**PHOTOGRAPHS:** Please note, some items when photographed, particularly watches, may have shadows, reflections or other marks that are a result of the photographic process and are not permanent. Both buyer and seller grant unrestricted use of auction photographs and prices realized to Schmitt Horan, LiveAuctioneers.com, Invaluable.com and Bidsquare.com.

**ITEM DESCRIPTIONS & CONDITIONS:** Employees do their best to aid and assist the customer, however any statements made by Schmitt Horan & Co. employees, agents or contractors are not considered a definitive record of what is being sold. The final record of what is being sold in a lot under any and all circumstances is the catalog provided by Schmitt Horan & Co., both printed and online. If there is a discrepancy between employee statements and the catalog, the catalog is the final and ultimate legal record of what is offered in the lot. We do our best to identify restoration, alteration or other condition issues in the condition report. We shall not be held liable for failure to do so. **IT IS THE RESPONSIBILITY OF THE BUYER TO CONFIRM CONDITION PRIOR TO BIDDING.** If the lot description includes the words "as found" or "as is" the item is sold without any guarantees. **All lots containing multiple items are considered in "AS IS" condition and cannot be returned.** General maintenance items such as broken suspension springs, broken or missing weight cords, & missing keys are not mentioned. Most clocks and watches will require cleaning and service after purchase. All costs associated with this are the responsibility of the client. Dimensions are approximate.

**SHIPPING:** We use outside companies to ship clocks that provides services worldwide: Please see Vendor Section for details. We are often able to offer "in-house" shipping on watches.

**PICK UP IN LIEU OF SHIPPING:** Purchases by absentee bidders, phone bidders or internet bidders may be picked up no sooner than 3 business days following the sale. You or your agent may arrange pickup by appointment at our office in Candia, NH. Please plan to settle your account at time of pick up. Items left in our custody for over 30 days from the date of the auction will be charged a storage fee of \$25 per item per week, which must be paid before items are released. We shall not be held liable for damage occurring to any item left in our custody after 30 days from the date of the auction.

**BUYER'S AGENT:** We are increasing access to live bidding agents, who can independently execute your bids the day of the sale. This service provides an independent set of eyes to validate a potential purchase or to provide flexibility in spending needs. Other additional services provided by these agents include careful packing and flexible delivery options. Buyer's Agents generally charge a commission on each successful sale, which they will discuss with you prior to executing your bids.

Agents available for our May 6, 2023 sale are listed below:

**Watches & Antiques**

John Kovacic [jkovacik@verizon.net](mailto:jkovacic@verizon.net) or (315) 823-1205

**Clocks & Antiques**

Rick Merritt [rmerritt@ptd.net](mailto:rmerritt@ptd.net) or (610) 780-5979

**RETURNS AND REFUNDS:** Returns will be considered only for items that do not conform to catalog description. **UNDER NO CIRCUMSTANCES WILL RETURNS BE ACCEPTED OR REFUNDS ISSUED LATER THAN 30 DAYS AFTER THE AUCTION.** If there is a problem and a refund or adjustment is requested we ask to be notified within one week of the auction and require to be notified ABSOLUTELY no later than 30 days of the auction or 7 business days after the item(s) are delivered, whichever is earliest, no exceptions. Transit damage alone is not sufficient reason to return an item. We will assist in claims against transport companies.

**DEFAULT and LITIGATION: REGISTRATION TO BID INDICATES ACCEPTANCE BY THE BIDDER OF THESE TERMS ENFORCEABLE AS A NEW HAMPSHIRE CONTRACT.** Schmitt Horan & Co. will not be liable for default by either the buyer, consignor or the vendor. No purchase shall be claimed or removed until paid for in full. Schmitt Horan & Co. reserves the right to refuse to accept bids made by a defaulting buyer at any future auction and to collect all costs and attorney's fees from the buyer associated with litigation and storage involving default. All legal disputes arising from this contract shall be disputed, litigated or mediated under New Hampshire law in the State of New Hampshire. All consignors or vendors are represented in our records by either name or a code directly associated with that name and are also a legal party to this contract.



**DELANEY ANTIQUE CLOCKS**  
[delaneyantiqueclocks.com](http://delaneyantiqueclocks.com)

*The Largest Selection of American  
Antique Tall Clocks in the Country*  
SHOP HOURS: Saturday & Sunday 9AM to 5PM  
During the week by chance or gladly by appointment



435 Main Street  
West Townsend, MA  
01474  
60 MINUTES FROM BOSTON  
45 MINUTES FROM MANCHESTER, NH  
**978-597-2231**

## VENDORS & TRADE RELATIONS

### Transport/Shipping

These are blanket wrapped hand delivery specialists. Ask for quotation.

>Mr. Scott Salzarulo, 200 W. Housatonic, #20, Pittsfield, MA 413-212-1252

>Ms. Wendy Buckus, 64 Hutchins, Concord, NH, 03301, 603-491-5199, nwtransport@aol.com

>Mr. Scott Cousins, 22 Nichols St. Merrimac MA 01860, scottcousins22@aol.com, (978) 419-9353

>Sure Express Worldwide, 110 Industrial Way, Portland, ME 04103, (800) 335-9996, sureexpress@maine.rr.com

>Marius Popescu, 1421 Amherst Ave, Los Angeles, CA 90025, (310) 866-3744, mariuspopescu2002@gmail.com

### Packing, Crating & Shipping (Standard Big Box Shipping, UPS, FED EX, USPS)

>Parcel Room, 1465 Woodbury Ave, Portsmouth, NH 03801 (603) 431-4205, email auctions@parcelroom.com

> The UPS Store, 35 Manchester Rd Ste 11A, Derry, NH 03038, (603) 434-9899, store4686@theupsstore.com

### Barometer Repair

>Winchester, MASS, 01890, Wayne Paskerian, (781) 729-0113, winway2@verizon.net

### Clock & Watch Sales & Repair MID-WESTERN & WESTERN STATES

>Carlsbad, CA, 92008, Richard Ivkovich, 2916 State St, (760) 729-1225

>Costa Mesa, CA 92627, Robert Emenger, Buck's Clock Shoppe, 440 E. 17th St, (949) 631-3215, bucksclockshoppe@msn.com

>Laguna Beach, CALIF, 92651, Dean Armentrout, 2185 Laguna Cyn-#B-1, 949-494-2711, dean-armentrout-antiques.com

>San Diego, CALIF, 92103; Time Traveler, Rich Wauson, 4227 Park Blvd, 619-298-5391, rew11ttc@gmail.com

> Palatine IL, 60067, Tick-Tock Clock Repairs Inc., 342 South Hart St, 847-991-4230, www.ticktockclock.com

>Mendota Height, MN, 55118, Cutter Edge, Inc 1169 Veronica Ln, (612) 280-5560 wcutter@cutteredge.com

> Oklahoma City, OK, 73122 Richard Garrett, House of Time, 3144 N MacArthur, (405) 946-0029 rghorologist@hotmail.com

### Clock & Watch Sales & Repair EASTERN STATES & CANADA

>Burlington, CONN, 06013; Mel Brown, 37 Village Lane, 860-673-2256 – Tickdoc1@aol.com

>E. Norwalk, CONN, 06855; The Clockery, 14 Van Zant St, 203-838-1789-www.clockery.com

>Cromwell, CONN, 06051, Frank De Felice, New Britain Clock Repair, 26 Edgewood St, 860-635-5599

>North Haven, CONN, 06473, Yankee Clock Peddler, (203) 288-4250, www.yankeeclockpeddlerct.com

>Tampa , FLORIDA, 33612, Boyd Clock Repair, 11620 N. Florida Ave, (813) 777-3437, boydclocks@gmail.com

>Harrison, MAINE, 04040, Harry Hepburn, 828 Edes Falls Rd, 04040, (207) 583-2821

>Saco, MAINE, 04072; Robert Boyd, 60 Shadagee Rd. #24 - 603-801-8292, bobboyd@rlbpab.com

>Scarborough, MAINE, 04074, Scarborough Hollow Clock Works, 700 US Route 1, Ste 104, (207) 730-7288 - scarboroughhollow@maine.rr.com

>Andover, MASS, 01810; Bob Frishman, 53 Poor St., 978-475-5001 – bell-time@comcast.net, www.bell-time.com

>Amesbury, MASS, 01913, Vincent Harrild, 1 River Ct. Suite 219 - (978) 314-8620, harrildvr@greenet.net

>Newton, MASS, 02458, Watertown Watch & Clock, 230 California St, (617) 244-3779, chris@watertownwatchandclock.com

>Swampscott, MASS, 01907, Phillips Clock Shop, 330 Essex St, (781) 593-1333, sales@phillipsclockshop.com, www.phillipsclockshop.com

>Wayland, MASS, 01778, Michael Poisson, 508-655-1958, mljw92@aol.com

>Warren, MICHIGAN, 48093; The Clockworks, 8385 Old 13 Mile Rd, (800) 574-9421, jkuechle@clockworks-inc.com, www.colcokworks-inc.com

>Exeter, NEW HAMPSHIRE, 03833; Barlows Clock Repair, 45 Donna Dr. 603-778-1452

>Hollis, NEW HAMPSHIRE, Russ Greenwood, 25 Louise Dr, 603-881-8309, rgtimeout44@msn.com

>Catskill, NEW YORK, 12411; Franklin Micare, 349 Main St, 518-828-5751, franklinmicare@rocketmail.com

>Little Falls, NEW YORK, 13365; Saving Time, PO BOX 169, savingtime@clockandwatchsite.com, (315) 823-1205 - www.clockandwatchsite.com

>Douglassville, PENNSYLVANIA, 1860 Weavertown Rd, 19518, Merritt's Anitques, (610) 689-9541, info@merritts.com, www.merritts.com

>Gibsonia, PENNSYLVANIA, 15044, Joe Brewer, - 2990 Marie Drive - (724) 443-9038

>Peace Dale, RHODE ISLAND, Old School Antiques, Peter Nunes, 4 Hopkins Ln, (410) 742-2112, peter.nunes@verizon.net

>Manassas, VIRGINIA, 20110; Orsini & Frost, 9071 Center Street, 703-368-0618

### Dial Restoration & Repainting

> The Clocksmith, 1531 Bower Ln, Johns Island, SC 29455, (843) 327-0455, bryan@clockrepaircharlestonsc.com, www.clockdialrestorations.com

>The Dial House, 3971 Buchanan Hwy, Dallas, GA 30157, (770) 445-2877, dial\_house@juno.com, www.dialhouse.net

### Related Restoration Materials/Vendors

>Merritts, Inc., Box 277, Douglasville, PA, 19518, 1-800-345-4101 – www.merritts.com

>Timesavers, Box 12700, Scottsdale, AZ, 85267, 1-800-552-1520 – www.timesavers.com

### Hand Painted Tablets

>Lee Davis, 4150 Old Orchard Rd., York, PA 17402, 717-757-7267

>Tom Moberg, 2323 Vandekaar Rd, Owasso, MI 48867 989-723-3112

All listings are made free of charge. We apologize for any error or omission. Please let us know of address changes or poor service from those recommended.

## Index

American Waltham Watch Co. 468

Anniversary Clock 379

Ansonia Clock Co. 412, 414, 416, 438-442

Arnold & Son, John 481

Astronomical Regulator 410, 420

Atkins Clock Co. 446

Auburndale Watch Co. 469

Automata 471, 472

Band Organ 343

Banjo Clock 445, 452

Bartram, Simon 474

Bauerle, Jacob 393

Beacham, C. E. 448

Beam Engine Clock 371

Beha, Johann Baptist 384, 385

Birge & Fuller 434

Black Forest 380-389

Bouvier Freres 472

Bradley & Hubbard 348,

Brockbanks & Atkins 462

Brown, J. C. 437, 449

Bryce, C. F. 428

Calendar Clock 443, 455, 456

Carriage Clock 351-360

Chronometer 461-465, 480, 481

Clock Peddler 347

Coinola 344

Conical Pendulum 378

Cooke & Sons, T. 410

Crystal Regulator 374

Crystal Regulator No. 4 (Ansonia Clock Co.) 439

Cuckoo Clock 382, 384-387, 390-392, 394, 395

Dachluhr 399

Dai Dokei 367-369

Desk Clock 349, 350

Double Figure Swing (Ansonia Clock Co.) 440

Earnshaw, Thomas 492

Elliott, J.J. 421

Evans & Sons 402, 404

Fasoldt, Charles 466

Figural Clock 372, 373, 376-378, 444

Gallery Clock 395

Garniture Set 388

Gaston Joly 375

Gilbert Clock Co., William L. 418, 424

Girandole 448

Gloria Ball Swing (Ansonia Clock Co.) 438

Herr, Hubert 394

Hoadley, Silas 435

Howard & Co. 444

Howard & Co., E. 451, 453, 454

Huntress Ball Swing (Ansonia Clock Co.) 441

Industrial Clock 371

Inro Dokei 363, 364

Ithaca Calendar Clock Co. 443, 455, 456

Ives, Joseph 447

Jacob Auch & Sohn 478

Japan 361-369

Jeweler's Regulator 409, 411-418, 426-430

Jones, George 450

Jupiter (Seth Thomas Clock Co.) 457

Keisan Dokei 365

Ketterer 391

Kroeber & Co., F. 417

Lenzkirch 400, 401, 413

Lepine 374

Lunar (Seth Thomas Clock Co.) 460

Lyre clock 370, 449

Makura Dokei 361, 362

Marble Front No. 17 (E. Howard & Co.) 454

Mass. Shelf Clock 433

Mercer, Thomas 403

Mills Novelty Co. 346

Model 311 (Lenzkirch) 413

Model 3784 (Seth Thomas Clock Co.) 422

Molyneux & Sons 482

Music Box 345, 389, 390, 392

Musical Watch 471,

Mystery Clocks & Swingers 438, 440, 441

Nashua Watch Co. 467

No. 2 Bank (Ithaca Calendar Clock Co.) 455

No. 3 1/2 Parlor (Ithaca Calendar Clock Co.) 443

No. 10 Regulator (E. Howard & Co.) 453

Onesime Dumas 463

Patek Philippe 465

Pepys, John 407

Phonograph 345

Pipe Organ 343

Piquet & Meylan 471

Player Piano 344

Prior, George 473

Purdom, John 406

Reginaphone 345

Regina Co., The 345

Regulator No. 1 (Ithaca Calendar Clock Co.) 456

Regulator No. 3 (Seth Thomas Clock Co.) 458

Regulator No. 7 (Waterbury Clock Co.) 415

Regulator No. 14 (Ansonia Clock Co.) 412

Regulator No. 16 (Ansonia Clock Co.) 416

Regulator No. 16 (Seth Thomas) 409

Regulator No. 16 (Wm. L. Gilbert Clock Co.) 424

Regulator No. 18 (Ansonia Clock Co.) 414

Regulator No. 20 (Gilbert Clock Co.) 418

Regulator No. 30 (Seth Thomas Clock Co.) 459

Riefler, Sigmund 408

Roskell, Robert 480

Senator (Ansonia Clock Co.) 442

Seth Thomas Clock Co. 409, 422, 423, 432, 457-460

Skeleton clock 375, 402-405

Slot Machine 346

Swiss Regulator No. 22 (F. Kroeber & Co.) 417

Synchronome 419

Tall Clock, Grandfather, Hall, Floor Regulator 421-423

Terry, Silas B. 436

Terryville Mfg Co. 436

Tiffany & Co. 427

Topsy 348

Tower Clock 432

Truitte & Mourier 490

Trumpeter Clock 393

Ulysee Nardin 461, 464

Vacheron & Constantn 470

Vienna Regulator 398, 399, 425, 431

Waltham Clock Co. 420

Waterbury Clock Co. 415

Wildenauer, F.X. 397

Willard, Aaron 433

Willard, Simon 445

Wood Movement 435

Wurlitzer 343

Yagura Dokei 366



Fax: (603) 432-2271  
 Phone: (603) 432-2237  
 E-mail: bids@schmitt-horan.com

--This form must be submitted 48 hours prior to the start of the auction--

PLEASE BID ON MY BEHALF, BIDDING AS CHEAPLY AS POSSIBLE, ON THE LOTS LISTED AND DESCRIBED BELOW. THE \$ FIGURE ENTERED IN THE RIGHT COLUMN IS MY MAXIMUM "HAMMER" PRICE, AND I UNDERSTAND THERE IS AN 20% BUYER'S PREMIUM ADDED TO THAT AMOUNT. THERE IS NO SALES TAX IN NH.

Please note: We offer "+1 BIDDING SERVICE". See our website for details.

LOT #	BRIEF DESCRIPTION	\$ BID / +1 (Y/N)
_____	_____	\$ _____ 1
_____	_____	\$ _____ 2
_____	_____	\$ _____ 3
_____	_____	\$ _____ 4
_____	_____	\$ _____ 5
_____	_____	\$ _____ 6
_____	_____	\$ _____ 7
_____	_____	\$ _____ 8
_____	_____	\$ _____ 9
_____	_____	\$ _____ 10
_____	_____	\$ _____ 11
_____	_____	\$ _____ 12
_____	_____	\$ _____ 13
_____	_____	\$ _____ 14
_____	_____	\$ _____ 15
_____	_____	\$ _____ 16

Additional sheets are acceptable. Upon notification that my bid or bids are successful, I shall promptly remit the balance due. I understand that I will be billed separately by the packing company for shipping.

\_\_\_\_\_/\_\_\_\_\_/\_\_\_\_\_) Total number of bids \_\_\_\_\_ )  
 Signature Date

Name \_\_\_\_\_

Address \_\_\_\_\_ City \_\_\_\_\_

State \_\_\_\_\_ Zip \_\_\_\_\_ E-mail \_\_\_\_\_

Telephone: Evening \_\_\_\_\_ Day \_\_\_\_\_ Cell \_\_\_\_\_

All invoices will be mailed or e-mailed two to three days after the auction. Please do not contact us regarding an invoice until at least 72 hours after the auction.

We offer this service as a convenience to our customers, and we cannot be responsible for late mail, failed transmissions, or other failures to execute bids. We are also not responsible for an unreadable FAX written in blue ink. Please use black ink, print clearly and confirm successful transmission by phoning us. All bids are confidential. We urge you to FAX this form as regular mail can prove unreliable. Express or Priority mail are also satisfactory. NH Lic #5060. You may also submit this form by email or phone. For other questions or bids e-mail: bids@schmitt-horan.com or telephone the number listed above.

**COPIES OF THIS FORM ARE ACCEPTABLE**