



# SCHMITT HORAN & CO.

PO Box 31 Candia, NH 03034  
sales@schmitt-horan.com  
603.432.2237

Online Bidding

[bids.schmitt-horan.com](https://bids.schmitt-horan.com)  
[www.liveauctioneers.com](https://www.liveauctioneers.com)  
[www.invaluable.com](https://www.invaluable.com)  
[www.bidsquare.com](https://www.bidsquare.com)

## Saturday & Sunday, April 27th & 28th 2024

### April 27 at 4pm

**Lots 1 - 300 Discovery Sale**

*Live Bidding Only*

### April 28 at 11am

**Lots 301 - 713 Live Auction**

*Absentee, Phone, Online, Live Bidding*

### Public Preview

Saturday, April 27 at 1pm to 3:45pm

Sunday, April 28 at 8am to 10:45am

Preview Also By Appointment

April 22 to April 26

Candia, New Hampshire

### The New England NAWCC Regional Meeting

Friday & Saturday April 26 to April 27, Everett Arena, Concord NH

Details and registration at [www.newenglandregional.org](http://www.newenglandregional.org)

Welcome to Schmitt Horan & Co.'s Spring 2024 live auction event, held in conjunction with the NAWCC's New England Regional. Lots 1 - 300 are an in-person bidding event only. Lots 301 - 713 will offer all bidding methods including in-person, online, phone and absentee. Lots 301 - 441 are included in this catalog, all other lots can be found online.

Auction Location  
**80 Raymond Rd**  
**Candia, NH 03034**

Follow us on social media on **Facebook, Instagram, Twitter** and **Youtube**. Please visit [schmitt-horan.com](https://schmitt-horan.com) to view lots not listed in this catalog and / or additional detail images and condition reports not shown in this catalog.

Additional information on food, parking and accommodations can be found on [schmitt-horan.com](https://schmitt-horan.com). For more detailed instructions on bidding, please see terms and conditions at the rear of catalog.

We are always seeking fine consignments. Please contact us for a confidential consultation and appraisal. See invitation at rear of the catalog for more information.

Daniel Horan  
NH Auctioneer License No. 5060

### SUMMARY OF TERMS OF SALE

**REGISTRATION** Is required prior to the sale for all bidders, including online, internet, phone and absentee.

**CONDITION OF LOTS** We describe and evaluate each lot to the best of our ability. The condition and authenticity should be confirmed by personal examination. The final decision to bid, and the amount to bid is at the bidder's discretion and liability.

**ITEMS PURCHASED** Successful bidders must remit payment within 15 days of close of the auction. It is the buyer's responsibility to verify that he / she has received accessories that may be separate when taking possession of their merchandise.

**BUYER'S PREMIUM** Buyers pay 20% premium on the hammer price. Invaluable, Live Auctioneers and Bid-square bidders pay an additional fee of 8%, as well as the 20% buyer's premium.

**PAYMENT** Acceptable forms of payment include pre-approved personal checks, cash, Paypal, and all major credit cards: VISA, Mastercard, American Express & Discover. There is an additional 3% processing fee for all credit card and Paypal purchases.



**DETAIL - Lot 313**  
*A very rare late 19th century Waltham 16 size model 1872 crystal plate pocket watch*



**DETAIL - Lot 305**  
*A late 19th century one minute tourbillon with Kew Certificate by S. Smith & Son*

# CONTENTS

1	EVENT ANNOUNCEMENTS	60	TALL CLOCKS
4	GOLD CHAINS & NUGGETS	65	NAWCC WARD FRANCILLON SYMPOSIUM
5	EUROPEAN POCKET WATCHES	66	JEWELER'S REGULATORS
11	AMERICAN POCKET WATCHES	77	AMERICAN CLOCKS
34	WRIST WATCHES	88	INDEX
43	INVITATION TO CONSIGN	89	TERMS AND CONDITIONS
44	MUSIC BOXES & MUSICAL CLOCKS	90	VENDOR INFORMATION
48	FRENCH & MYSTERY CLOCKS	91	BID FORM
55	BRACKET & BLACK FOREST CLOCKS	92	INVITATION TO CONSIGN

*Featuring wrist and pocket watches from the Vern Playton Collection*

## BIDDING INCREMENTS

We will make every effort to use the following increments:

- \$0 - \$500: \$25 increments
- \$501 - \$1000: \$50 increments
- \$1000 and up: Auctioneer's Discretion

- Typically...
- \$1001 - \$2000: \$100 increments
  - \$2001 - \$4000: \$200 increments
  - \$4001 - \$10,000: \$500 increments
  - \$10,001 and up: \$1000

Photos and descriptions for lots 1 - 300 and 442 - 713, not featured in the catalog, are available online. Please see [www.schmitt-horan.com](http://www.schmitt-horan.com).



Lot 465

Lot 462

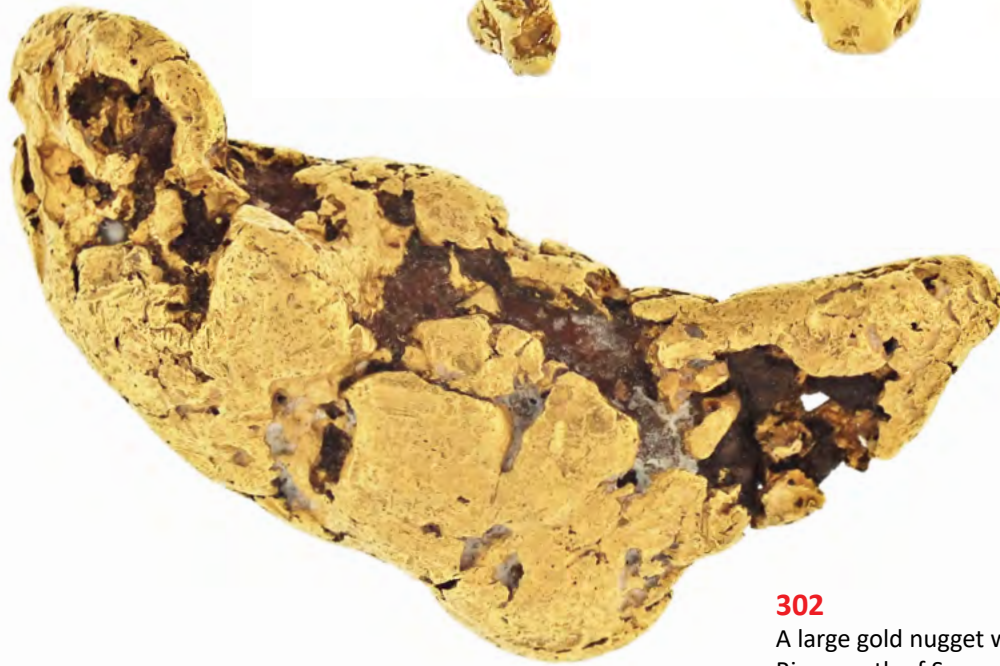
Lot 461

Lot 467

**301**

A heavy gold nugget watch chain, the links made of small gold nuggets, and with large gold nugget fob, 16in, with rare acorn form anti theft device, 149.6g TW

**\$7000-\$9000**    *Circa 20th century*



**302**

A large gold nugget weighing 133.5g, taken from the Yuba River north of Sacramento, California in the gold rush.

**\$7000-\$9000**



### 303

Usher & Cole, London, a large gold minute repeating perpetual calendar pocket watch, 21 jewels, stem wind and pin set gilt plate keyless fusee movement with lever escapement, freesprung cut bimetallic balance with large gold screws and diamond endstone, and raised barrel with decorative engraving, 18 karat, yellow gold, hinged back and snap bezel open face case with engraved monogram on rear cover, roman numeral, pentuple sunk white enamel dial signed "Willis", with date at 3:00, seconds and moon phase at 6, day of the week at 9, and four year month display with concentric wind indicator at 12:00, gold spade and poker hands, serial #24992, 58mm, 211.7g TW

**Condition:** CASE: Shallow dent, back; Dings: Fine scratches on outer surface of case; Cuvette with small dent and very fine scratches; Crystal with a few tiny edge flakes; Crown worn; Precious metal content marked. DIAL: Tiny chip on moon mask at 0 on moon's age scale, otherwise very good. HANDS: Hour with bends; Seconds with loss to blue at tip; Wind indicator and date hands with minor scratches and loss to blue. MOVEMENT PLATES: Scuffs; Very fine scratches on plate; A few minor dings to edge of top plate; Small dent in top plate near center arbor; Scratches in sunk center of raised barrel, mostly hidden by mainspring set up ratchet; Set up ratchet with scratch; Set up ratchet and click with fine abrasion; Bright work with very fine scratches. MOVEMENT FUNCTION: Running order (winds, sets and ticks); Winding a bit stiff. COMPLICATIONS: Functioning properly.

\$15000-\$20000 Circa 1900



**304**  
C.H. Meylan, Brassus, for Spaulding & Co., Chicago, a minute repeating split seconds chronograph with perpetual calendar pocket watch, 40 jewels, stem wind and set, adjusted to 6 positions, temperature and isochronism cotes de Geneve decorated rhodium plated movement with counterpoised lever escapement, cut bimetallic balance with gold screws, and whiplash micrometric regulator, in an 18 karat yellow gold open face case, the back with engraved "JM" monogram, and the cuvette engraved "Joseph Mattes Oct. 1st, 1912", arabic numeral, outer red 5-minute markers, quadruple sunk white enamel dial with moon phase aperture at 6:00, plum colored steel spade and poker hands, serial #5634, 51mm, 129g TW, with the original velvet and silk lined mahogany box

**Condition:** CASE: Bezel with a few small dings and shallow dent on bezel, 6 - 7:00; Tiny dings; Very fine scratches on outer surface of case; Band with localized case knife marks; Cuvette with polishing marks; Hinges tight; All covers with tight snaps, particularly the cuvette; Bow tight; Crown with minor wear; Precious metal content marked. DIAL: Seconds bit with two faint hairlines; Month display with three faint hairlines. HANDS: Very good. MOVEMENT PLATES: Some localized darkening of plating; Hour hammer with tiny speck of oxide; Dirty; Otherwise very good. MOVEMENT FUNCTION: Running order (winds, sets and ticks). COMPLICATION: All function properly, would benefit from service. Box exterior with small dents and scratches; marring of finish; Interior good. A very nice example of this esteemed maker's work. The movement is exceptionally well finished, and in very good condition.

**\$14000-\$18000** Circa 1910



**305**  
Nicole, Nielsen & Co. for S. Smith & Son, Clerkenwell, a late 19th century gold one minute tourbillon pocket watch, 19 jewels, stem wind and pin set, gilt half plate keyless reverse fusee movement with lever escapement, freesprung cut bimetallic balance with gold screws, three arm equidistant tourbillon carriage, and raised barrel, in an 18 karat, yellow gold, hinged back and snap bezel open face case with swivel pendant and monogram on back, London hallmark, date letter for 1899 - 1900, and "SS" sponsors mark, roman numeral silver dial with wind indicator, the seconds bit engraved "Kew Certificate 88.7", blued steel spade and poker hands, serial #238-99, 56mm, 181.4g TW, dial and movement signed

**Condition:** CASE: Band with flat spot, 3:00; Minor dings; Very fine scratches on outer surface of case; Very fine scratches on cuvette; Crystal with a few minor scratches; Precious metal content marked. DIAL: Fine scratches; Minor localized pitting; Darkening and losses to silver at edge; Minor losses to engraving infill; Scratches and loss to silver at center of wind indicator. HANDS: Good. MOVEMENT PLATES: Very fine scratches on plate; Tourbillon bridge with fine scratches; Tourbillon cage with localized fine scratches; Case screw heads with minor marring; Some other screws with minor losses to blue; Dirty. MOVEMENT FUNCTION: Running order (winds, sets and ticks); Balance out of flat; Balance arm and roller with blue from heating; Good amplitude dial up, variable dial down, needs service.

**\$10000-\$15000** Circa 1900



306



307

**306**  
Haas, Switzerland, an early 20th century slim minute repeating dress watch, 29 jewels, stem wind and set, 5 adjustments, cotes de Geneve decorated nickel bar movement, with lever escapement, cut bimetallic balance and whiplash micrometric regulator in an 18 karat, yellow gold, hinged back and snap bezel, invisible hinge open face case, champlève arabic numeral matte gold dial with plum colored steel spade and whip hands, serial #20344, 47mm, 62.7g TW, case and movement signed

**\$3000-\$5000** Circa 1915

**307**  
Charles Huegenin & Son, Locle, Switzerland, a gold minute repeating chronograph pocket watch, stem wind and lever set nickel plate movement with lever escapement, in a heavy 18 karat, yellow gold, engine turned hunting case with reeded edge bezel, gold cuvette engraved with maker's signature and serial number, roman numeral, single sunk white enamel dial, blued steel spade and whip hands, serial #3973 (case), 53mm, 148g TW

**\$2500-\$3500** Circa 1890



308



309

**308**  
Patek, Philippe & Co., Geneva, for I.G. Dillon, Wheeling, West Virginia, a mans gold pocket watch, 18 jewels, stem wind and set cotes de Geneve decorated nickel bar movement with moustache lever escapement, and cut bimetallic balance in an 18 karat yellow gold plain polished box hinge hunting case, arabic numeral, outer red 5-minute markers, single sunk white enamel dial, with plum colored steel spade and whip hands. serial #66725, 51.6mm, 134.3g TW

**\$2500-\$3500** Circa 1885

**309**  
Switzerland, an early 20th century gold minute repeating pocket chronograph, 32 jewel, stem wind and lever set, damascened nickel plate movement with lever escapement and cut bimetallic balance in an 18 karat, rose gold hunting case with Jurgensen lips, engraved monograms on front and back covers, and engine turned cuvette, roman numeral, single sunk white enamel dial with fifth seconds chapter at the periphery, plum colored steel Breguet style hands, 54mm, 142.1g TW

**\$2500-\$3500** Circa 1900

**310**

Mudge & Dutton, London, a late 18th century dumb quarter repeating pocket watch, 8 jewel, key wind and set, gilt full plate movement with cylinder escapement, balance with diamond endstone and Stogden's quarter repeating, activated through the pendant, and striking on two blocks within the 22 karat, yellow gold open face case with London hallmark, date letter for the year 1783, and maker's mark "I.T.P.", with roman numeral white enamel dial, 46.25mm, 104.2g TW

**\$1800-\$2500**      *Circa 1783*

**311**

Henry O. Stauffer, Les Ponts de Martel, a good Centennial pocket watch for the American market, 18 jewels, stem wind and lever set nickel plate movement, the bridges shaped and arranged to read "1776", with lever escapement and cut bimetallic balance in a 14 karat, rose gold plain polished hunting case, roman numeral single sunk white enamel dial with blued steel spade hands, serial #2789, 54mm, 134.9g TW, dial and movement signed

**\$1300-\$1600**      *Circa 1885*

**312**

A. Ulysse Grandjean, Lac de Joux, 20 jewels, stem wind and pin set cotes de Geneve decorated nickel bar movement with counterpoised lever escapement, cut bimetallic balance with gold screws, and gold endstone settings in an 18 karat, yellow gold, engine turned hunting case with owners name engraved on the engine turned gold cuvette, roman numeral single sunk white enamel dial with plum colored steel Breguet style hands, serial #916, 50.5mm, 117g TW

**\$1200-\$1400**      *Circa 1870*



**313**  
American Waltham Watch Co., Waltham, Mass., a very rare model 1872 crystal plate pocket watch, 16 size, 17 jewels, stem wind and lever set movement with transparent rock crystal top plate and balance cock, the bottom plate gilded and with ornate damascening, with lever escapement, cut bimetallic balance with gold screws, gold wheel train, damascened, polished steel winding wheels with engraved gold washers and Fogg tadpole micrometric regulator in an 18 karat, yellow gold, hinged back and bezel display case, and arabic numeral, outer red 5-minute markers, double sunk white enamel dial signed "A.W.W. Co" in Old English font above "Waltham, Mass.", with blued steel Breguet style hands, serial #10, with Waltham purple silk and velvet lined mahogany box

**Condition:** CASE: Dings; very fine scratches on outer surface of case; Crystals with minor marks and fine scratches; Precious metal content tested. DIAL: Excellent. HANDS: Minor oxide, tip of minute. MOVEMENT PLATES: Winding wheels with minor specks and one small spot of oxide; Setting lever with minor oxide; Balance cock screw replaced; Repaired break to balance cock at jewel/ stud; Some loss of material on the underside resulting from the break. MOVEMENT FUNCTION: Running order (winds, sets and ticks). Box with minor marks and scratches.

**\$35000-\$45000** Circa 1890





**314**

American Waltham Watch Co., Waltham, Mass., a late 19th century five minute repeating pocket chronograph, 18 size, 15 jewels, stem wind and lever set, adjusted, damascened nickel plate movement with lever escapement, cut bimetallic balance with gold screws, and Fogg tadpole micrometric regulator in a 14 karat, rose gold, engraved hunting case, the cuvette engraved "John Pagan Jr. Yonkers, N.Y.", roman numeral, outer black 5-minute markers, single sunk white enamel dial with blued steel spade and whip hands, serial #3127646, 140.4g TW

**Condition:** CASE: Two small, shallow dents, front; Fine scratches on outer surface of case; Very fine scratches on cuvette; Bow and crown with minor wear; Covers with later engraving rendered by an inexpert hand; Precious metal content marked. DIAL: A few minor scratches, otherwise very good. HANDS: Very good. MOVEMENT PLATES: Very fine scratches on plate; Scratches and pin pricks on balance cock foot; Some screw heads with minor marring; Balance cock screw polished and with flat at center of head; Balance endstone setting with minor marring; upper chronograph runner jewel cracked. MOVEMENT FUNCTION: Running order (winds, sets and ticks). COMPLICATION: Repeating functioning correctly; Chronograph with occasional slight hesitation when started, otherwise functioning properly.

**\$5000-\$7000** Circa 1885

315



316



**315**

American Waltham Watch Co., Waltham Mass., an early 20th century "Premier Maximus" pocket watch in an English gold case, 16 size, 23 jewels, stem wind and set, adjusted to 6 positions, temperature and isochronism, damascened nickel plate movement with lever escapement, diamond endstones, cut bimetallic balance with gold screws, gold jewel settings, and Ohlson micrometric regulator in an 18 karat, yellow gold, hinged back and bezel, open face Dennison case with Birmingham hallmark and date letter for the year 1924, and arabic numeral, quadruple sunk white enamel dial with blued steel whip and spade hands, serial #17000124, 103.2g TW

**\$4000-\$5000** Circa 1910

**316**

E. Howard & Co., Boston, Mass., for Joslin & Park, Salt Lake City, Utah, a heavy, gold series IV pocket watch, N size, 15 jewels, stem wind and lever set gilt plate movement with lever escapement and cut bimetallic balance with gold screws in a heavy, 16 karat, yellow gold, engraved, scalloped edge hunting case, roman numeral, single sunk white enamel dial with photographic portrait of a young woman and blued steel umbrella hands, serial #38695, 194.7g TW

**\$3500-\$4500** Circa 1870



317

319

318

320

**317**  
American Waltham Watch Co., Waltham, Mass., 18 size, 17 jewel, stem wind and lever set, adjusted to 3 positions, temperature and isochronism, damascened nickel plate movement with lever escapement, cut bimetallic balance with gold screws, gold jewel settings, and Church micrometric regulator, the barrel bridge marked "Special Rail Road King", in a 14 karat, rose gold, engraved hunting case with observation cuvette and applied four color gold ornament, the front with monogrammed shield, a bell, rails and wheels, signaling devices, a bell, and a garland of flowers, surrounded by a foliate border, the back with gold locomotive having diamond set lantern, and also with foliate border, roman numeral, outer red 5-minute markers, double sunk white enamel dial marked "For R.R. Service" above the seconds bit, blued steel spade hands, serial #4546026, 164.1g TW

**\$3000-\$4000** Circa 1890

**318**  
Columbus Watch Co., Columbus, Ohio, a good "Columbus Railway King" pocket watch, 18 size, 16 jewels, stem wind and lever set, adjusted to 5 positions, two tone damascened nickel plate movement with lever escapement, cut bimetallic balance with gold screws, gold jewel settings and micrometric regulator in a heavy, 18 karat rose gold, engraved hunting case with engraved cipher on front cover, arabic numeral, outer red 5-minute markers, double sunk white enamel dial with locomotive and marked "Columbus Railway King", gilt Louis XIV hands, serial #230233, 170.7g TW

**\$3000-\$4000** Circa 1895

**319**  
E. Howard & Co., Boston, Mass., a mid 19th century series II pocket watch, N size, 15 jewels, key wind and set gilt plate movement with lever escapement and cut bimetallic balance with gold screws in an 18 karat, yellow gold, intricately engraved hunting case, arabic numeral, single sunk white enamel dial with blued steel spade and poker hands, serial #2010, 137.2g TW

**\$3000-\$4000** Circa 1860

**320**  
Elgin National Watch Co., Elgin, Illinois, for J.W. Tucker & Co., San Francisco, an "M.D. Ogden" pocket watch, 18 size, 11 jewels, key wind and set gilt plate movement with lever escapement and cut bimetallic balance in an 18 karat, yellow gold, engine turned and engraved Baldwin patent reversible case with engine turned interior and engraved monogram on cover, roman numeral, single sunk white enamel dial signed for the retailer and with sheaf of wheat, blued steel spade hands, serial #326622, 140.4g TW

**\$3000-\$4000** Circa 1875



321

**321**

American Waltham Watch Co., Waltham, Mass., a gold cased model 1857 pocket watch, 18 size, 15 jewels, stem wind and lever set gilt plate movement with lever escapement and cut bimetallic balance, in a 14 karat, yellow gold, engine turned and engraved hunting case with engraved monogram on front cover, roman numeral, single sunk white enamel dial with blued steel spade hands, serial #178689, 134.3g TW

**\$2500-\$3000** Circa 1875



322

**322**

American Waltham Watch Co., Waltham, Mass., a gold cased model 1857 pocket watch, 18 size, 15 jewels, stem wind and lever set gilt plate movement with lever escapement and cut bimetallic balance with gold screws, in an 18 karat, yellow gold, engine turned and engraved hunting case, roman numeral, single sunk white enamel dial with blued steel morning glory hands, serial #762547, 134.3g TW

**\$2000-\$3000** Circa 1875



323

**323**

American Waltham Watch Co., Waltham, Mass., for Howard & Co., New York, a good model 1874 pocket watch with American theme gold case and original box, 14 size, stem wind and lever set, 15 jewel, adjusted, damascened nickel plate movement with lever escapement, cut bimetallic balance with gold screws and Woerd micrometric regulator in an 18 karat, yellow gold, engraved hunting case, the front with American eagle, arrows and shield below an arc with matted ground and 13 stars, the back with symbols of commerce, justice, unity, and triumph flanking a central reserve with engraved cipher, all below an arc of stars, as on the front, roman numeral, single sunk white enamel dial with gold whip and spade hands, serial #1737811, 111g TW, together with its original gilt stamped, purple morocco covered box, with purple silk lining, the cover interior with printed reproductions of awards from the Philadelphia and Paris exhibitions of 1876 and 1878, and with compartment below the watch receiver with spare crystal and mainspring

**\$2000-\$3000** Circa 1880



324

**324**

Boston Watch Co., Waltham, Mass., a "Dennison, Howard & Davis" pocket watch, 18 size, 15 jewels, key wind and set gilt plate movement with lever escapement and steel balance with diamond endstone in a 14 karat, yellow gold, engraved hunting case, the cuvette marked "To Jno. Dove from his Father Decr. 25th 1860", roman numeral white enamel dial with blued steel spade and poker hands, serial #1051, 116.1g TW

**\$2000-\$3000** Circa 1855



**325**

Columbus Watch Co., Columbus, Ohio, a late 19th century "North Star" pocket watch, 18 size, 15 jewels, stem wind and lever set, damascened nickel plate movement with lever escapement, cut bimetallic balance and micrometric regulator in a 14 karat yellow gold, engraved hunting case, with applied, four color gold ornament, the back with eight point star set with a single diamond, and engraved dedication on gold cuvette, arabic numeral, single sunk, O'Hara style multicolor enamel dial with blued steel spade and poker hands, serial #298364, 142.5g TW

**\$2000-\$2500** Circa 1895



**326**

Columbus Watch Co., Columbus, Ohio, for A.M. Hill, New Orleans, La., a decorative, late 19th century pocket watch, 18 size, 15 jewels, stem wind and lever set, damascened nickel plate movement with lever escapement, cut bimetallic balance with gold screws, and micrometric regulator in a 14 karat, yellow gold, engraved hunting case with scalloped band, and applied four color gold ornament, the back with central, six point star set with a diamond, roman numeral, single sunk white enamel dial with blued steel spade hands, serial #115522, 155.2g TW

**\$2000-\$3000** Circa 1890



**327**

E. Howard & Co., Boston, Mass., a late 19th century series VII split plate pocket watch with gold box hinge case, N size, 17 jewel, stem wind and set, adjusted, damascened nickel plate movement with lever escapement, cut bimetallic balance with gold screws, gold jewel settings, and whiplash micrometric regulator in a Keller & Untermeyer 14 karat rose gold, skillfully engraved, box hinge hunting case with glazed cuvette, the back with landscape featuring a standing buck, and the front with ornate cipher, roman numeral, single sunk white enamel dial with blued steel umbrella hands and painted monogram with owners name and location, serial #229840, 143.6g TW, with late 20th century Howard box

**\$2000-\$2500** Circa 1895



**328**

American Waltham Watch Co., Waltham, Mass., a late 19th century model 1883 "Appleton, Tracy & Co." pocket watch, 18 size, 15 jewels, stem wind and lever set, adjusted, gilt, damascened nickel plate movement with lever escapement, cut bimetallic balance with gold screws, gold jewel settings, and Church micrometric regulator in a 14 karat, yellow gold, engraved, box hinge hunting case, arabic numeral, single sunk O'Hara style multicolor enamel dial with Louis XIV hands, serial #4614063, 146.5g TW

**\$1800-\$2400** Circa 1890



329

**329**

American Waltham Watch Co., Waltham, Mass., a late 19th century model 1883 "Crescent St." pocket watch, 18 size, 17 jewels, stem wind and lever set, adjusted, damascened nickel plate movement with lever escapement, cut bimetallic balance with gold screws, gold jewel settings, and Church micrometric regulator in a 14 karat, yellow gold, engraved, box hinge hunting case with applied four color gold ornament, the front with wreath surrounding a monogrammed shield, and the back with rose gold locomotive with diamond simulant set lantern, Ferguson arabic numeral, double sunk white enamel dial with blued steel fleur de lis hands, serial #7580272, 144.1g TW

**\$1800-\$2600** Circa 1895



330

**330**

American Waltham Watch Co., Waltham, Mass., a model 1892 "Royal" pocket watch, 18 size, 17 jewels, stem wind and lever set, adjusted, damascened, two tone nickel plate movement with lever escapement, cut bimetallic balance with gold screws, gold jewel settings and Church micrometric regulator in a 14 karat, yellow gold, engine turned and engraved hunting case, roman numeral, double sunk white enamel dial with blued steel spade hands, serial #7537246, 172.1g TW

**\$1800-\$2400** Circa 1900



**331**

Illinois Watch Co., Springfield, Illinois, a late 19th century grade 103 pocket watch, 18 size, 15 jewel, stem wind and lever set, damascened nickel plate movement marked "Sunny South", with lever escapement and cut bimetallic balance in a 14 karat, yellow gold, engraved, faux box hinge hunting case with scalloped band and applied four color gold ornament, the front with floral wreath and shield with engraved monogram, the back with foliate ornament surrounding an eight point star, roman numeral, double sunk white enamel dial with blued steel spade hands, serial #211851, 134.5g TW

**\$1800-\$2600** Circa 1880



**332**

Rockford Watch Co., Rockford, Illinois, a grade 84 pocket watch with exceptionally decorative case and dial, 18 size, 15 jewels, stem wind and lever set, adjusted, two tone damascened nickel plate movement with lever escapement, cut bimetallic balance with gold screws, and micrometric regulator in a very good 14 karat, yellow gold, engraved hunting case with applied four color gold ornament, hexagonal pendant and bow with chain guard, the case front with shield and engraved monogram, and very attractive arabic numeral O'Hara style multicolor enamel dial with blued steel hands, serial #339928, 167.5g TW

**\$1800-\$2600** Circa 1890



334

**333**

American Waltham Watch Co., Waltham, Mass., a late 19th century model 1872 pocket watch, 16 size, 15 jewel, stem wind and lever set, adjusted, damascened nickel plate movement with lever escapement, cut bimetallic balance with gold screws, and Woerd micrometric regulator in a 14 karat, rose gold, engraved, hinged back and bezel, faux box hinge open face case with engine turned band and engraved monogram on rear cover, arabic numeral, single sunk O'Hara multicolor enamel dial with blued steel Breguet style hands, serial #1915931, 120.5g TW

**\$1700-\$2200** Circa 1885



333

**334**

American Waltham Watch Co., Waltham, Mass., a late 19th century model 1883 "Crescent St." pocket watch, 18 size, 15 jewel, stem wind and lever set, adjusted, damascened nickel plate movement with lever escapement, cut bimetallic balance with gold screws, gold jewel settings, and Church micrometric regulator in a 14 karat, yellow gold, engraved hunting case with scalloped band, and applied four color gold ornament, the front with shield surrounded by floral and foliate forms, the back with leaves and set with a single diamond, arabic numeral, single sunk, O'Hara multicolor enamel dial with Louis XIV hands, serial #4099044, 142.1g TW

**\$1600-\$2000** Circa 1890



335

**335**

American Waltham Watch Co., Waltham, Mass., a model 1884 pocket chronograph with minute register, 14 size, 17 jewel, stem wind and lever set gilt plate movement with lever escapement and cut bimetallic balance, in a 14 karat, yellow gold, engraved, box hinge hunting case with applied four color gold ornament, the front with three color cipher, and the back with horse head within a horseshoe and set with 11 diamonds, roman numeral, double sunk white enamel dial with 15 minute register at 3:00 and constant seconds at 9:00, blued steel spade and whip hands, serial #3161011, 137g TW

**\$1600-\$2200** Circa 1885



336

**336**

American Waltham Watch Co., Waltham, Mass., a rare early 20th century A.W.W. grade model 1892 pocket watch displaying sidereal time, 21 jewel, stem wind and lever set, adjusted, radiating arc damascened nickel plate movement with lever escapement, cut bimetallic balance with gold screws, gold jewel settings, and Church micrometric regulator in a gold filled, screw back and bezel display case, arabic numeral 24 hour enamel dial marked "Sidereal" above the seconds bit, and blued steel spade hands, serial #10099659, with associated Waltham silk and velvet lined mahogany box.

**\$1600-\$2200** Circa 1900



**337**

E. Howard & Co., Boston, Mass., a good late 19th century series VIII pocket watch, N size, 15 jewels, stem wind and set adjusted to 6 positions, temperature and isochronism damascened nickel plate movement with lever escapement, cut bimetallic balance with gold screws, gold jewel settings, and whiplash micrometric regulator in a 14 karat, rose gold open face case, the back with central, polished field with radiating sunburst reeding, the broadening rays continuing around the case sides and on to the bezel, and terminating at the crystal, roman numeral, outer black 5-minute markers, single sunk white enamel dial with blued steel umbrella hands, serial # 304110, 138.6g TW

**\$1600-\$2200** Circa 1890



**338**

Elgin National Watch Co., Elgin, Illinois, a good late 19th century pocket watch with a very decorative hunting case, 16 size, 15 jewels, stem wind and lever set, adjusted, damascened nickel plate convertible movement with lever escapement, cut bimetallic balance with gold screws, and Moseley micrometric regulator in a very decorative 14 karat yellow gold, box hinge hunting case with applied four color gold ornament, arabic numeral, single sunk O'Hara style multicolor enamel dial with gold Louis XIV hands, serial #5047986, 129.4g TW

**\$1600-\$2000** Circa 1895



**340**



**339**

**339**

Rockford Watch Co., Rockford, Illinois, an early 20th century grade 50 pocket watch, 18 size, 17 jewel, stem wind and lever set, adjusted, two tone damascened nickel plate movement with lever escapement and cut bimetallic balance in a 14 karat, yellow gold, engraved, box hinge hunting case with applied four color gold ornament, arabic numeral, single sunk, O'Hara style multicolor enamel dial with gilt Louis XIV hands, serial #516986, 158.1g TW

**\$1600-\$2000** Circa 1900

**340**

American Waltham Watch Co., Waltham, Mass., a model 1883 "P.S. Bartlett" pocket watch, 18 size, 17 jewels, stem wind and lever set adjusted, damascened nickel plate movement with lever escapement, cut bimetallic balance and Church micrometric regulator in a 14 karat yellow gold engraved box hinge hunting case with applied four color gold ornament, very attractive arabic numeral, single sunk O'Hara style multicolor enamel dial with gold Louis XIV style hands, serial #14127682, 142.5g TW

**\$1500-\$1800** Circa 1905





**341**  
Hampden Watch Co., Canton, Ohio, for J.P. Stevens, Atlanta, Ga., a late 19th century gold pocket watch, 18 size, 15 jewels, stem wind and set gilt plate movement with lever escapement, cut bimetallic balance with gold screws, and Stevens micrometric regulator in a 14 karat, rose gold, engraved box hinge hunting case with engraved cipher on front and back covers, roman numeral single sunk white enamel dial signed "J.P. Stevens Watch Co. Atlanta, Ga.", and blued steel spade hands, serial #154705, 131.1g TW

**\$1500-\$2000** Circa 1880

**342**  
American Waltham Watch Co., Waltham, Mass., a late 19th century model 1884 "Riverside" pocket chronograph, 14 size, 13 jewels, stem wind and lever set, adjusted, damascened nickel plate movement with lever escapement and cut bimetallic balance in a 14 karat, yellow gold, engraved, box hinge hunting case, roman numeral, single sunk white enamel dial with blued steel spade and whip hands, serial #3037224, 129.8g TW

**\$1400-\$1800** Circa 1885



**343**  
American Waltham Watch Co., Waltham, Mass., a model 1874 "Riverside" chronograph, 14 size, 15 jewels, stem wind and lever set, damascened nickel plate movement with lever escapement, cut bimetallic balance with gold screws, and Fogg tadpole micrometric regulator in a 14 karat, rose gold, box hinge open face case, roman numeral, outer red 5-minute markers, single sunk white enamel dial with blued steel whip and spade hands, serial #2360925, 114.2g TW

**\$1400-\$1800** Circa 1885



**344**  
American Waltham Watch Co., Waltham, Mass., an early 20th century model 1899 "Riverside Maximus" pocket watch, 16 size, 23 jewels, stem wind and set, adjusted, damascened nickel plate movement with lever escapement, cut bimetallic balance with gold screws, diamond endstones, gold jewel settings, gold wheel train and whiplash micrometric regulator in a very unusual 14 karat, yellow gold, engraved hunting case with applied red, green and yellow gold foliate ornament, arabic numeral, outer red 5-minute markers, double sunk white enamel dial with blued steel spade hands, serial #12583256, 94.9g TW

**\$1400-\$1800** Circa 1905



345

**345**

American Waltham Watch Co., Waltham, Mass., for the Portuguese Mercantile Co., San Francisco, a gold model 1892 "Vanguard" pocket watch, 18 size, 21 jewels, stem wind and lever set, adjusted, damascened nickel plate movement with lever escapement, cut bimetallic balance with gold screws, gold jewel settings, and Church micrometric regulator in a 14 karat, yellow gold, engraved scalloped edge hunting case with engraved presentation on gold cuvette and monogram on front cover, arabic numeral single sunk O'Hara style multicolor enamel dial with gilt Louis XIV style hands, serial #7448642, 148.8g TW

**\$1400-\$1700** Circa 1900



346

**346**

Ball Watch Co., Cleveland, Ohio, a Ball - Illinois grade 810 "Official Standard" pocket watch, 23 jewels, 16 size, stem wind and lever set, adjusted to 5 positions, temperature and isochronism, damascened nickel plate movement with lever escapement, cut bimetallic balance with gold screws, gold jewel settings, and whiplash micrometric regulator in a white gold filled, screw back and bezel, engraved, open face Ball Model case, Canadian 24-hour arabic numeral, single sunk white enamel dial with blued steel Ball - Illinois hands, serial #B801056

**\$1400-\$1800** Circa 1930



348

**347**

E. Howard & Co., Boston, Mass., a late 19th century series XI pocket watch, L size, 17 jewel, stem wind and set, adjusted, damascened split plate movement with lever escapement, cut bimetallic balance with gold screws, gold jewel settings and whiplash micrometric regulator, in a 14 karat, rose gold, engraved hunting case with applied four color gold ornament, the front with engraved cipher, the back with locomotive having a diamond set lantern, four color flora, and two color border, arabic numeral, outer red and black 5 minute markers, double sunk white enamel dial with blued steel umbrella hands, serial #600465, 116.4g TW

**\$1400-\$1800** Circa 1895



347

**348**

Hamilton Watch Co., Lancaster, Penn., for Anna Silveira, San Francisco, an early 20th century "975" pocket watch with diamond set gold case, 17 jewel, stem wind and lever set, adjusted, damascened nickel plate movement with lever escapement, cut bimetallic balance, and whiplash micrometric regulator in a 14 karat, yellow gold, engraved hunting case with applied four color gold ornament, and set with 27 diamonds, arabic numeral, single sunk O'Hara style multicolor enamel dial with fancy gilt hands, serial #873221, 112.9g TW, with bark grain leather covered Hamilton box

**\$1400-\$1800** Circa 1910



**349**

American Waltham Watch Co., Waltham, Mass., a model 1892 "Vanguard" pocket watch with wind indicator, 18 size, 23 jewels, stem wind and lever set, adjusted, damascened nickel plate movement with lever escapement, cut bimetallic balance with gold screws, gold jewel settings, and Ohlson micrometric regulator in a 14 karat, yellow gold, hinged back and bezel, reeded edge, engine turned and engraved open face case, arabic numeral, triple sunk white enamel dial with blued steel hands, serial #16188345, 146.5g TW

**\$1300-\$1700** Circa 1905



**350**

American Waltham Watch Co., Waltham, Mass., a model 1892 "Vanguard" pocket watch, 23 jewels, 18 size, stem wind and lever set, adjusted, damascened nickel plate movement with lever escapement, cut bimetallic balance with gold screws, diamond endstone, gold jewel settings, and Church micrometric regulator in a 14 karat, yellow gold, reeded edge, engraved, box hinge hunting case, arabic numeral, outer red 5-minute markers, double sunk white enamel dial with blued steel spade hands, serial #12540486, 136.2g TW

**\$1300-\$1600** Circa 1905



**351**

**351**

Elgin National Watch Co., Elgin, Illinois, a decorative, late 19th century pocket watch, 16 size, 15 jewels, stem wind and lever set damascened nickel plate movement with lever escapement and cut bimetallic balance in a 14 karat, yellow gold, intricately engraved box hinge hunting case with engraved monogram on front cover, and owner's name and date on gold cuvette, and very colorful arabic numeral O'Hara style multicolor enamel dial with gilt Louis XIV hands, serial #1325607, 117.8g TW

**\$1300-\$1600** Circa 1885



**352**

**352**

Elgin National Watch Co., Elgin, Illinois, a late 19th century grade 83 pocket watch with sweep seconds, 16 size, 16 jewels, stem wind and lever set gilt plate movement with lever escapement and cut bimetallic balance in a 14 karat, yellow gold, engraved, box hinge hunting case with owners name engraved on front cover and presentation on gold cuvette, roman numeral, outer black 5-minute markers and 1/5 second divisions, white enamel dial with plum colored steel hands, serial #898093, 122.2g TW

**\$1300-\$1600** Circa 1880



**353**

Illinois Watch Co., Springfield, Illinois, an early 20th century "Bunn Special" pocket watch, 18 size, 24 jewels, stem wind and lever set, adjusted to 6 positions, temperature and isochronism, damascened nickel plate movement with lever escapement, cut bimetallic balance with gold screws, gold jewel settings, and whiplash micrometric regulator in a 14 karat, yellow gold, engraved hunting case, the cuvette with engraved lion rampant with halberd, above a banner marked "Ferio Tego", and initials "A.W.S.", gothic arabic numeral, outer red 5-minute markers, double sunk white enamel dial with blued steel spade and poker hands, serial #1788768, 126g TW

**\$1200-\$1500** Circa 1905



**354**

American Waltham Watch Co., Waltham, Mass., a model 1899 "Riverside Maximus" with wind indicator, 16 size, 23 jewels, stem wind and lever set, adjusted to 6 positions, damascened nickel plate movement with lever escapement, cut bimetallic balance with gold screws, diamond endstones, gold jewel settings, gold wheel train, and whiplash micrometric regulator in a 14 karat yellow gold, hinged back and bezel, engraved open face case, arabic numeral, triple sunk white enamel dial with wind indicator at 12:00, blued steel spade and poker hands, serial #15062059, 79g TW

**\$1000-\$1500** Circa 1905



**355**

**355**

E. Howard Watch Co. (Keystone), Waltham, Mass., an early 20th century series 0 pocket watch with Treadwell Mining Co. connection, 16 size, 23 jewel, stem wind and set, adjusted to 5 positions, temperature and isochronism, damascened nickel bar movement with lever escapement, cut bimetallic balance with gold screws, gold jewel settings, and whiplash micrometric regulator in a 14 karat, yellow gold, reeded edge, engine turned and engraved hunting case with monogram on front cover and maker's details and presentation engraved on gold cuvette, the presentation reading "Monte Benson A Token of Respect from Mexican and 700 Mine Employees Dec. 7th 15 Treadwell Alaska", arabic numeral, outer red 5-minute markers, single sunk white enamel dial with blued steel whip and spade hands, serial #1103784, 94.2g TW, with associated Howard box and license

**\$900-\$1200** Dated 1915

**356**

Rockford Watch Co., Rockford, Illinois, a scarce grade 900 pocket watch, 18 size, 24 jewels, adjusted to 5 positions, temperature and isochronism, damascened nickel plate movement with lever escapement, cut bimetallic balance with gold screws, gold jewel settings, and whiplash micrometric regulator in a gold filled, screw back and bezel open face case with landscape scene engraved on back cover, arabic numeral, outer red 5-minute markers, double sunk white enamel dial with blued steel spade hands, serial #666153

**\$800-\$1200** Circa 1905



**356**



**357**

Vacheron & Constantin, Geneva, a mid 20th century gold ref. 4560 wrist watch, 17 jewel, manual winding, adjusted, cotes de Geneve decorated rhodium plated cal. P495 movement with lever escapement and micrometric regulator in a round, 18 karat yellow gold case with claw lugs and engraved initials on case back, pyramid and arabic numeral marker silver dial with day and month apertures above the center and date display at the periphery, gold stick hands and blued steel arrow date indicator, serial #463750, 35.5mm, 51.1g TW

**Condition:** CASE: Back with shallow dents and depressions around engraved letters; Dings; Localized case knife marks; Fine scratches on outer surface of case; A more significant scratch on the 11:00 lug; Case back with crudely scratched initials; Acrylic crystal with fine scratches; Plating worn through on crown; Precious metal content marked. DIAL: Professionally restored, now showing age; Lacquer with craquelure at edge. HANDS: Dirty. MOVEMENT PLATES: Very fine scratches on plate; Minor gouging and a more significant scratch at set lever screw; Minor oxide on regulator; Screw heads with very fine scratches; Specks of dirt. MOVEMENT FUNCTION: Running order (winds, sets and ticks). COMPLICATION: Functions properly; Correctors functional.

**\$8000-\$12000** Circa 1950



**358**

Rolex Watch Co., Switzerland, "GMT Master", ref. 16750, 27 jewels, automatic winding, adjusted to 5 positions and temperature, rhodium plated caliber 3075 movement with lever escapement, free sprung Micro Stella balance and double roller in a stainless steel case with black bezel, ref. 62510H Jubilee bracelet with 550 ends, matte black dial with luminous markers, and luminous polished steel hands, serial #7163525, 40mm

**Condition:** CASE: Scratches and minor dings; Three small dents near 8:00 lug; Case back with tiny dings and very fine scratches; Acrylic crystal with numerous fine scratches; Bezel with fine scratches; Bracelet with wear and fine scratches. DIAL: Very good. HANDS: Dirty, otherwise very good; GMT hand lacking luminous compound. MOVEMENT PLATES: A few very fine scratches on plate; Fine scratches and losses to plating due to contact with rotor; Automatic bridge with a few minor scuffs; Specks of dirt / dust. MOVEMENT FUNCTION: Running order (winds, sets and ticks); Date advance and quick set functional

**\$7000-\$9000** Circa 1982



**359**

Vacheron & Constantin, Geneva, a ref. 42042 / 423A "Overseas" wrist watch with boxes and papers, 27 jewels, automatic winding with 21 karat rotor weight, adjusted to 5 positions and temperature, cotes de Geneve decorated cal. 1311 rhodium plated movement with lever escapement in a stainless steel case with stainless bracelet, baton marker silver guilloche dial with date aperture at 3:00 and luminous baton hands, case serial #759219, movement serial #924600, 37mm, together with it's original inner and outer boxes, original paperwork, and a three page Vacheron Constantin service record dated May 14, 2020

**Condition:** CASE: Very fine scratches and minor dings; Bracelet with fine scratches, scuffs and minor dings. DIAL: Excellent. HANDS: Excellent. MOVEMENT PLATES: Excellent. MOVEMENT FUNCTION: Running order (winds, sets and ticks); Date advance and quick set functional; Serviced by Vacheron Constantin in May of 2020. Boxes and papers very good.

**\$7000-\$9000** Circa early 21st c



**360**

Montres Tudor, Geneva, a one owner, mid 20th century ref. 7928 "Submariner" wrist watch, 17 jewels, automatic winding, rhodium plated cal. 390 movement with lever escapement, in a stainless steel Oyster case with bi directional rotating bezel, the inside of the back with manufacturers information, reference number, and "IV 66", with stainless steel C&I riveted Oyster bracelet, the clasp marked 1-68, baton, dot, and arrow marker matte black dial with rose logo and Mercedes hands, case serial #591567, 40mm

**Condition:** CASE: Polished; Ends with significant wear from bracelet ends, partially obscuring the serial and reference numbers; Fine scratches on outer surface of case; Tiny dings; Slightly more significant dings and scratches on lugs; Bezel insert lacking luminous dot and with a few minor marks and fine scratches; Case back with very fine scratches and minor case wrench marring; Correct crown with a few minor dings and minor wear; Bracelet with fine scratches, minor dents, and some stretching. **DIAL:** Very good. **HANDS:** Specks of oxide. **MOVEMENT PLATES:** Rotor with very fine scratches; Plate with scattered fine scratches and localized pin pricks; Automatic wheel above ratchet wheel with very fine scratches; Set lever screw head with minor marring. **MOVEMENT FUNCTION:** Runs briefly, setting functional, needs service.

\$4000-\$6000 Circa 1966



**361**

Rolex, Geneva, a late 20th century ref. 16800 "Submariner", 27 jewels, automatic winding, adjusted to 5 positions and temperature rhodium plated cal. 3035 movement with lever escapement and free sprung Micro Stella balance in a stainless steel case with unidirectional rotating bezel with green insert, and stainless steel ref. 93150 Oyster bracelet with 593 ends, mother of pearl serti dial with date aperture at 3:00, the baton, dot, and arrow markers set with faceted green stones, luminous Mercedes hands, serial #9442728, 40mm

**Condition:** CASE: Very fine scratches and tiny dings on outer surface of case; Case back with very fine scratches and minor dings; Bezel insert with small dent; Insert is an after-market replacement; Crown with dent above coronet; Bracelet with very fine scratches. **DIAL:** Very good; An aftermarket replacement. **HANDS:** Very good. **MOVEMENT PLATES:** A few very fine scratches on plate; Minor marring on balance cock foot; Very minor losses to plating due to contact with rotor. **MOVEMENT FUNCTION:** Running order (winds, sets and ticks); Date advance and quick set functional.

\$4000-\$6000 Circa 1990



**362**

Omega Watch Co., Switzerland, a "Speedmaster Professional" wrist chronograph, ref.145.022-69, cal. 861, manual winding, 17 jewel gilt movement with lever escapement and micrometric regulator in a stainless steel case with fixed bezel and pre moon back, black dial with luminous markers, minute and hour registers and constant seconds at 3, 6, and 9:00 respectively, and luminous baton hands, serial #29602982, 42mm, together with a partial ref. 1039 bracelet and two 516 end links

**Condition:** CASE: Dings and fine scratches; Case side with flat at bottom, 9:00; Case side and 4:00 lug with dents; Bezel insert with minor marks and fine scratches; Case back with significant case wrench scratches; Acrylic crystal with very fine scratches. **DIAL:** Tiny mark on seconds dial, otherwise very good. **HANDS:** Hour and minute with losses to white paint at center; Luminous compound dark. **MOVEMENT PLATES:** Very fine scratches on balance cock; Some steel components with a few localized spots/ specks of oxide; Dirty. **MOVEMENT FUNCTION:** Running order (winds, sets and ticks). **COMPLICATION:** Functions properly; Chronograph hand slightly off center when at the zero position.

\$3000-\$5000 Circa 1969



**363**

Breitling, Switzerland, a ref. AB015112/BA59 "Transocean Chronograph Limited" wrist chronograph with boxes and papers, automatic movement, 47 jewel, in a heavy stainless steel display back case with black rubber strap, luminous marker black dial with luminous and polished steel hands, date aperture at 4:30, thirty minute register, 12 hour register, and constant seconds at 3, 6, and 9:00 respectively, serial #3045204, 43mm, with original boxes and papers, chronometer and warranty certificate

**Condition:** CASE: A few scattered, very fine scratches and scuffs; Strap and buckle very good. **DIAL:** Excellent. **HANDS:** Excellent. **MOVEMENT PLATES:** Excellent. **MOVEMENT FUNCTION:** Running order (winds, sets and ticks). **COMPLICATION:** Chronograph functions properly, date advance and quick set functional. Inner box and accessories very good, outer boxes also very good.

\$2000-\$3000 Circa 2011



**364**

Franck Muller for Gianni Versace, a ref. 4199/11 4N "Master Banker" wrist watch, 21 jewels, automatic winding, cotes de Geneve decorated rhodium plated ETA cal. 2892A2 movement with Muller modifications, lever escapement and platinum rotor in an 18 karat yellow gold oblong case with black alligator strap and gold buckle, roman numeral silver guilloche dial with date aperture at 3:00, two subsidiary dials for different time zones, and blue steel leaf hands, No.41 of an edition of 250, 40mm x 48mm, 127.9g TW

**\$2500-\$3500** Circa 2003



**365**

LeCoultre, Switzerland, a good mid 20th century gold ref. 2672 jumbo "Memovox World Time" wrist watch, 17 jewel, bumper automatic winding, cotes de Geneve decorated cal. K825 rhodium plated movement with lever escapement and alarm train, in a round, 14 karat yellow gold case with black leather strap, baton marker black dial with engraved rectangular markers at 6 and 9:00, date aperture at 3:00, rotating center with the names of 24 important cities, and luminous dauphine hands, case serial #4626557, movement serial #1751778, 37mm, 52.7g TW

**\$2500-\$3500** Circa 1960



**366**

Angelus, Switzerland, a mid 20th century Angelus "Big Eyes" wrist chronograph, 17 jewels, manual winding, rhodium plated movement with lever escapement in a round, 18 karat yellow gold case with stepped lugs and leather strap, arabic numeral, double sunk silver dial with 45 minute register at 3:00, constant seconds at 9:00, and gold leaf hands, serial #61445, 35.5mm

**\$1700-\$2200** Circa 1945



**367**

Zenith, Switzerland, a late 20th century ref. 53-0370-400 "Rainbow" wrist chronograph, 31 jewels, automatic winding cal. 400 rhodium plated movement with lever escapement and micro-metric regulator in a round stainless steel case with gold bezel, arrow marker blue dial with date aperture at 4:30, minute and hour registers, and constant seconds, at 3, 6 and 9:00 respectively, and luminous alpha hands, 39mm

**\$1600-\$2200** Circa 1995





**368**

Le Coultre Co., Switzerland, a mid 20th century gold ref. 3012 wrist watch with boxes and papers, 17 jewels, manual winding rhodium plated cal. K818/2 movement with lever escapement in a square 14 karat yellow gold case with integral mesh bracelet, black lined stick and baton marker silver linen dial with black lined gold stick hands, case serial #6538344, movement serial #2018466, 26mm, 57.9g TW, together with original boxes and papers

**\$1200-\$1500** Circa 1975



**369**

Angelus, Switzerland, a mid 20th century Angelus "Big Eyes" wrist chronograph, 17 jewels, manual winding, rhodium plated movement with lever escapement in a round stainless steel case with leather strap, arabic numeral, double sunk silver dial with 45 minute register at 3:00, constant seconds at 9:00, and blued steel syringe hands, serial #256507, 35.5mm

**\$1000-\$1500** Circa 1945



**370**

Le Coultre, Switzerland, a man's "Galaxy" wristwatch with mystery dial, 17 jewels, bumper automatic winding, damascened rhodium plated movement with lever escapement, in a 14 karat white gold case with black reptile strap, the silver mystery dial with diamond set baton markers, hour and minute indicators, serial #1325576, 32.5mm, 34.8g TW, together with the original boxes, the outer with textured black surface and with "Record of Achievement" printed in gold, the inner with gilt stamped black morocco exterior, the interior with silk and velvet lining, and also with original tags and LeCoultre booklet with guarantee

**\$1000-\$1500** Circa 1960



**371**

Hamilton Watch Co., Lancaster, Penn., a mid 20th century gold "Spectra" wrist watch, 11 jewels, battery powered cal. 505 movement in a customized 14 karat yellow gold case with 28 small diamonds in white gold settings and "J.J. Stillmock" engraved below 6:00, dot marker and arabic 12 Spectra dial with gold dauphine hands, serial #60673, 35mm x 39mm, 41g TW

**\$900-\$1200** Circa 1960



**372**

Clebar, LeLocle, a mid 20th century ref. 1198 wrist chronograph, 17 jewels, manual winding rhodium plated movement with lever escapement, in a round stainless steel case with yellow leather strap, arrow marker silver dial with arabic 12 and 30 minute register, hour register, and constant seconds at 3, 6, and 9:00 respectively, polished silver dauphine hands, serial #105824, 35mm

**\$800-\$1200** Circa 1955

**373**

Omega Watch Co., Switzerland, a ref. 166.027 "Seamaster 120" wrist watch, 24 jewels, automatic winding, gilt plate movement with lever escapement and micrometric regulator in a stainless steel case with black bezel and leather strap, black baton marker dial with date aperture at 3:00 and luminous baton hands, serial #26391704, 37mm x 42mm

**\$800-\$1200** Circa 1968



**374**

Omega, Switzerland, a mid 20th century Omega ref. 2576-4 "Seamaster" wrist watch, 17 jewel, bumper automatic winding, cal. 344 gilt plate movement with lever escapement and whip-lash micrometric regulator in a round, stainless steel case with nylon strap, arabic numeral and dart marker matte silver dial with luminous dauphine hands, serial #13754969, 34.5mm

**\$800-\$1200** Circa 1950

# SCHMITT HORAN & CO.

*Seeking Fine Consignments*

**Sold \$21,600**

May 6, 2023

A rare Simon Bartram  
mid 17th century  
silver verge pocket watch with date

Contact Us for a  
Confidential Appraisal

sales@schmitt-horan.com  
603.432.2237



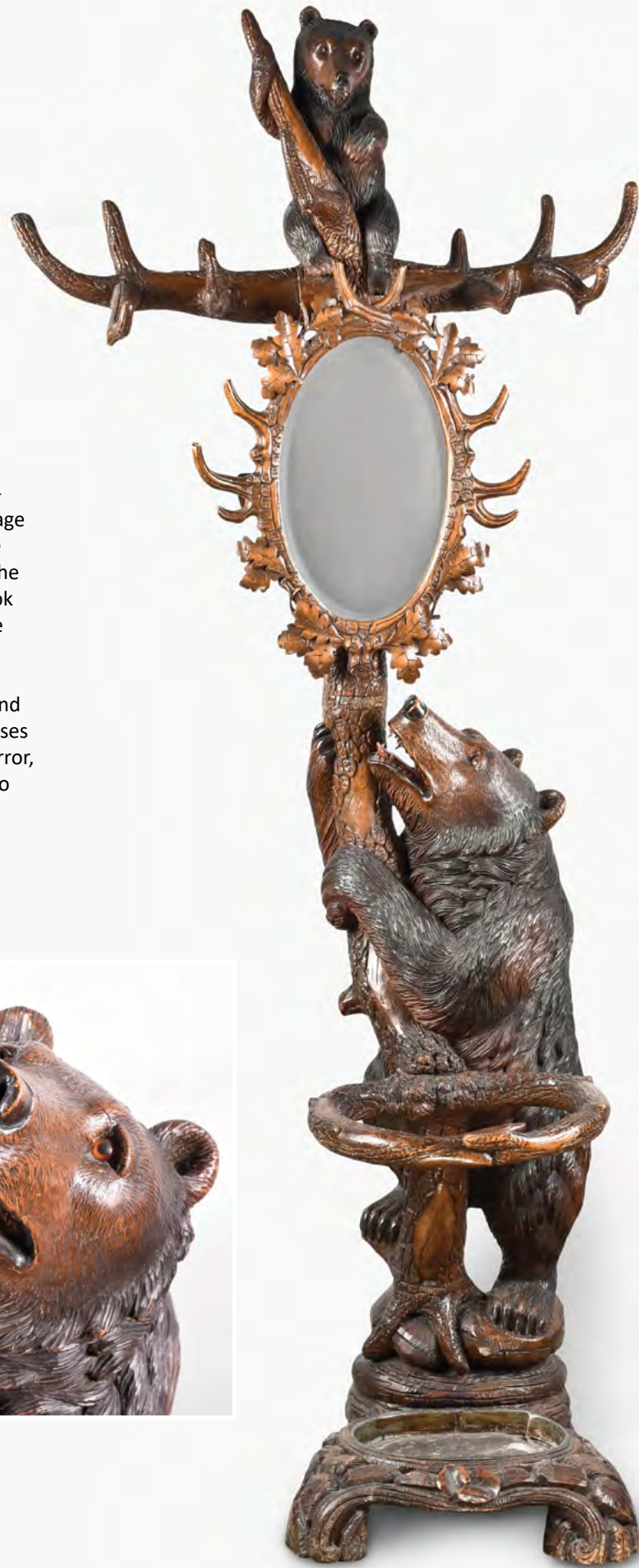
375

Switzerland, a good Black Forest carved linden hall tree with bears, rockwork and foliage carved base with umbrella stand below the standing bear and carved tree, her cub at the top among the spreading, coat and hat hook branches, and above the branch and foliate carved oval mirror

**Condition:** wear commensurate with age and use, minor splits and scuffs throughout, losses and repairs to tips of foliate carvings on mirror, back with minor abrasions, metal insert into base of umbrella stand dented

**\$1800-\$2500**

*Circa Early 20th century 85in x 20in x 27in*



376

Mermod Freres, Switzerland, an early 20th century model 202 Stella Orchestral Grand disc music box, mahogany case with paneled base, the right side with a cupboard for disc storage, the upper case having glazed doors with fluted columns and pierced frets, egg and dart molded cornice and crest with carved acanthus and green man mask, the interior with cast iron, gold painted bed plate, comb, and disc bar, the motor concealed behind the bed plate and with start/stop lever at the right side of case, serial #3681, together with forty five 25.5 inch discs

**Condition:** case good overall, and in its original finish, case with bumps, dings, and minor scratches, winding hole escutcheon and start/stop control with tarnish and losses to plating, nickel plated components on bed plate with some scratches and minor plating loss

**\$8000-\$12000**

*Circa 1900 86in x 34.5in x 20.75in*



**377**

The Regina Co., Rahway, N.J., a scarce "Reginaphone" combination music box and phonograph, mahogany case with molded base, the lid with stepped, molded top, the underside of the cover with molded panel and Reginaphone transfer, the interior with short bedplate movement and duplex comb, removable cast iron platen, tone arm and horn for conversion to phonograph, the case bottom with original guarantee label, includes a certificate of origin issued and signed by the Musical Box Society International, showing the date it left the Regina factory in 1914, no.1501055

**\$1800-\$2500**

*Circa 1914 12in x 21.5in x 19in*

**378**

Regina music box company, an upright table or bar top coin operated music box, the oak cabinet with glazed door, molded base and cornice, and drawer designed to collect coins, single comb on an iron bed plate marked "Regina" and "44454", celluloid tags with patent information and disc mounting and removal instructions, one 12 inch disc included that plays Wild Irish Rose

**\$1200-\$1600**

*Circa 1889 21in x 18.25in x 11.5in*





### 379

Attributed to Xavier Therin, Paris, a fine, large, third quarter 19th century musical picture frame clock, the watercolor and gouache on lithograph rural scene featuring homes, a church and a mill on the banks of a waterway with various floating vessels, behind the church a forest, and on the opposite side three windmills on the hills above the water, the foreground with a stone bridge and much of the automata, including two women at the waters edge beating laundry, a woman nodding her head, a diving duck, a goat and a ewe, their heads with quick, short movements as if grazing, a cow with nodding head, a couple fishing from a rocking boat, three turning windmills, a water wheel, and high overhead a hot air balloon traverses the sky, the scene within an ornate gilt frame with composition ornament and glass with painted black mat, the church tower with clock having a roman numeral white enamel dial and blued steel hands, the box behind the scene containing a 15 day, two train movement with square plates, pulleys and lines for driving the automata, and a small, three air cylinder music box, the interior also with a printed instruction sheet, and a small rectangular label listing the tunes

**Condition:** frame restored and with a few very minor losses to surface, minor, localized lifting of black paint on glass, the scene very good and without significant fading or losses, some very small surface spots, smudge in the sky between church tower and forest, one washerwoman with cracks to surface from the waist up, tower with slight bulge at clock dial, sides of box containing mechanism with minor paint loss, movement running and striking, pendulum rod and bob replaced, music box plays a bit fast, but plays well. The scene is very busy, having thirteen different movements - of the examples of Therin's work that we are aware of, none have a greater number of moving figures and objects. Youtube video of music and automation available at <https://youtu.be/QXEH5NwmxDs>.

**\$6000-\$8000** Circa 1870 9.5in x 43in x 33in



**380**  
 France, a gilt and nickel plated, automated horizontal steam boiler and piston engine compendium, the machinery mounted to a cast floor with crosshatched surface resting on a black slate base with gilt feet, boiler fitted with an eight day time only clock with cylinder escapement and aneroid barometer, both with silvered dials and flanking a central thermometer with silvered scale and surmounted by a working piston engine, the flywheel, piston and governor powered by a movement concealed in the cylinder, the valve front with plaque marked "D. H. Depose", together with a purpose made Lexan case, and a bit of information about the family that owned the piece

**Condition:** slate with a few tiny flakes, boiler lacking the majority of the nickel plating, gilt surfaces lacking plating, minor verdigris above the barometer, both dials with tarnish, time dial numerals repainted, lacking the valve screw that starts and stop the motion, that position now occupied by a makeshift gauge, both movements running, motion of the piston engine a bit sluggish, Lexan case with scratches and abrasion. Youtube videos of automation available at <https://youtu.be/Ht7HYEPD8GM> and <https://youtu.be/-Je886-rI3k>

**\$7000-\$9000** Circa 1890 11in x 11.25in x 5.5in



**381**  
 Andre Romain Guilmet, Paris, an industrial series steam hammer clock, the footed, stepped black slate base supporting the bronze drop hammer form case with polished brass and black painted surfaces, a platform at the left side of the case with figure at the drop lever, the hammer forming part of the complex compound pendulum, rising and falling, and appearing to strike the anvil as the clock runs, the rectangular silvered dial with applied roman numerals and blued steel trefoil hands, eight day, time and strike pendule de Paris movement with Guilmet's modifications and Guilmet's mark on the back plate. For additional information on Guilmet and his clocks, see Derek Roberts' "Mystery, Novelty, And Fantasy Clocks"

**Condition:** base with flakes and chips, front of base with poorly repaired break, brass components with minor tarnish and fingerprint stains, originally silvered surfaces now painted black, front right foot glued to base and with minor misalignment, nuts and spacers securing the case top replaced, anvil with dents, dial with a few fine scratches and with some misaligned numerals, minute hand with losses to blue and incorrect hand washer, standing figure lacking most of his gilt surface, movement dirty and saturated with oil, hammer, pallet arbor linkage and a few other components with soft solder repairs, strike hammer an incorrect replacement, running and striking

**\$5000-\$7000** Circa 1880 18.25 x 12in x 5.5in



James Nasmyth with steam hammer at Patricroft Works, 29th August, 1855

**382**

France, a good early 20th century figural swinging mystery clock, the composition after Aristide Ranieri's "Girl at the Fountain", the standing, patinated female figure leaning forward to examine her reflection in a pool bordered by lily pads and cattail leaves, the reservoir fed by the stone fountain at her left, her right arm raised and holding a flower to her head, and suspending the gridiron style pendulum with patinated, spherical bob within a champeve enamel ring, and also containing the eight day, two train movement, striking the hour and half hour on a bell

**Condition:** a bit dirty and with minor losses to finish, more significant finish loss on the woman's dress, small bit of brass trim at the top of the center pendulum rod needs to be secured, pendulum and sphere good, will run and strike, pendulum suspension with bends, internal suspension with bends, would benefit from service

**\$3500-\$5000**

*Circa 1900 23.75in x 16in x 11.25*



**383**

Andre Romain Guilmet, a very large bronze and black slate swinging mystery clock, the case with stepped molded base and central ornament with cartouche and flanking scroll and foliate elements, the sides with decorative handles, all on paw feet with scroll and honeysuckle returns, roman numeral black slate dial with gilt bezel and gilt hands, the case top with projecting cornice and surmounted by a beautifully modelled, patinated figure of Athena, her left hand with laurel fronds and her right held aloft suspending the pendulum with thick, brass rimmed glass bob, impulsed through the nearly imperceptible movement of the bronze base on which she stands, the bob marked "Balancier Libre Horlogerie Executée Par Guilmet Aine Paris", eight day, two train time and strike movement with crank and stirrup escapement, the back plate with Guilmet's mark and numbered 5562, together with a pair of associated black slate tazze

**Condition:** case with repaired breaks at the front corners of top, repair at left with minor loss at side, small repair to top molding at rear left, base molding with repaired break at rear right, feet and central base mount with losses to gilding, dirt, and minor verdigris, figure with minor losses to finish, dial, hands, and pendulum good, bezel glass with scratches, movement with minor tarnish and staining, escapement functioning, but imparting insufficient energy to maintain the motion of the pendulum, striking functional, would benefit from service, tazze with minor flakes and chips, and with a coat of black lacquer, the central, convex component of the base in green marble, now also with black lacquer

**\$3000-\$5000**

*Circa 1885 39.75in x 17.5in x 10.25in*





**384**

France, a monumental early 20th century swinging mystery clock with later cabinet base, the patinated spelter standing female figure with cattails and an unidentified object in her right hand, her left arm held aloft and supporting the swinging compound pendulum, the eight day timepiece contained in the patinated, upper sphere, with gothic roman numerals and Louis XIV style hands above the three rod, gridiron style pendulum with spherical bob, and on a hexagonal base with incurved sides and plaque marked "Orientale par P. Nanteuil", with a later black hexagonal stand, and hexagonal wooden cabinet

**Condition:** figure with restoration to finish, left arm with repaired break at elbow, object in her right hand with improvised fastener at upper end, pendulum good, upper sphere with a few minor dents and losses to finish, movement oily, ticking, internal pendulum bob and rod replaced, pendulum not perfectly plumb, will need counterweight adjustment, cabinet base with bumps and dings

**\$3000-\$5000** Circa 1900 61.5in x 16in x 19in





**385**

France, a large figural mantel or table clock with conical pendulum, the black slate case with paw feet and honeysuckle returns supporting the canted base below a cylindrical case with projecting sides and front, and with conforming, molded top, the case with gilt, incised line ornament, and surmounted by a patinated spelter figure of a young woman with amphora cradled in her right hand, the left held aloft and supporting the conical pendulum with blue spherical bob mounted with silver stars, roman numeral black slate dial with gilt spade hands, eight day two train movement striking the hours and half hour on a bell, together with a pair of associated, patinated spelter ewers with caryatid and gryphon handles, goat heads and festoons, medallion with mask, and foliate ornamented foot, on japanned and faux griotte marble cast iron bases with gilt, incised line ornament

**\$2000-\$3000** Circa 1880 35.5in x 18.5in x 10.5in



**386**

France, a large early twentieth century figural swinging clock, the patinated spelter female figure on a round, molded base with plaque marked "La Fortune Par Louis Moreau, Medlle D'or", her right foot resting on a winged wheel, her right hand with dagger, and her left raised and supporting the three rod, faux gridiron pendulum with spherical, patinated bob, the matching upper sphere with roman numerals, fancy pierced and engraved hands, and containing an eight day brass time-piece movement stamped 5149/France

**\$1500-\$2000** Circa 1900 28.5in x 8in x 8in



**387**

France, a large, early 20th century figural swinging clock, the patinated spelter representation of Industry mounted to a faux griotte marble base with molded plinth with plaque marked "L'Industrie par Aug. Moreau (Med. D'Or)"; the standing figure with his right foot above a toppled vase, his right hand resting on a large gear and with decorative charger at his feet, the eight day timepiece movement contained in a patinated sphere with roman numerals and ornate brass hands, above a three rod, bimetallic compound pendulum with spherical bob

**\$1200-\$1600** Circa 1900 34in x 10in



**388**

Attributed to Brocot & Delettrez, a good 19th century mantel regulator for the English market, polished black slate case with variegated multicolor marble trim and inlay, pulvinated base on scroll feet with acanthus and bellflower ornament, the sides with drawer pull style sunflower mounts, and surmounted by a bowknot with cascading laurel and oak branches, oval reed and ribbon bezel with beveled glass and acanthus engraved, gilt mask set with Sevres type plaques featuring putto and gilt foliage, roman numeral white enamel dial with exposed Brocot escapement and blued steel Breguet style hands above a white enamel calendar dial, the center decorated with clouds and night sky, day of the week, date, and aperture displaying phases of the moon, surrounded by a ring indicating the months and with simple equation of time, eight day, two train pendule de Paris movement striking on a bell, the back plate marked "J.B.D.", and with Brocot's calendar movement

**\$2500-\$3500** Circa 1870 17in x 14in x 6in



**389**

Charles Voisin, Paris, a large Louis XV bracket clock, the Boulle work case with turtle shell veneer, finely fretted brass inlays, and gilt floral and foliate mounts, the interior of the back and case bottom also with fretted and engraved inlay, the door with acanthus ornament and Venus riding in a scallop shell pulled by dolphins, and the top with brass moldings and surmounted by a seated figure with scythe, the cast dial with ornamental center, roman numeral white enamel cartouches, and blued steel hands, the two train brass movement with rectangular plates, tapered baluster pillars, large spring barrels, and signed "Charles Voisin a Paris", now with Brocot escapement

**\$2500-\$3500** Circa 1725 39in x 16.75in x 7.75in



**390**

France, a large 19th century Louis XV style bracket clock, the Boulle work case with turtle shell veneer, finely fretted brass inlays, scroll feet, and gilt foliate mounts, the interior of the back and case bottom also with fretted and engraved inlay, the center of the base with crowing cock and flanking acanthus mount, and the top with brass moldings and surmounted by a trumpeting angel, the cast dial with roman numeral white enamel cartouches and blued steel hands, 15 day, two train movement with square plates, marked "H&F Paris", and sunburst pendulum with mask, the bracket also with Boulle work and gilt mounts

**\$2500-\$3500** Circa 1875 49in x 18in x 10in



**391**

H. Boerger, a Mulhouse, a late 18th century quarter striking pendule Neuchateloise with bracket, the waisted case with black lacquer finish decorated with gilt floral and foliate ornaments, gilded feet, door and trim, the molded top with ball finial, signed roman numeral white enamel dial with pierced and engraved gilt brass hands, 15 day, two train movement with verge escapement and silk thread suspended pendulum, striking ting tang quarters on two bells, and pull repeat sounding the last hour and quarter on demand, the back plate marked "H.L.R.," possibly for Henry Louis Roy, the clock with its original wall bracket and paperwork from Richard Redding antiques

**\$1800-\$2500** Circa 1790 25.5in x 14in x 6.5in



**392**

Richard & Cie, Paris, a good mid 19th century petit sonnerie carriage clock, the gilt, engraved gorge case with beveled glasses and folding carrying handle, roman numeral white enamel dial with subsidiary alarm chapter, gilt, engraved mask, and blued steel hands, eight day, three train movement with lever platform, striking on two gongs, and repeating the last hour and quarter on demand

**\$1500-\$2000** Circa 1870 8in x 4in x 3.25in



**393**

Thomas Windmills, London, an 18th century table clock in an ebonized case with gilt, decorative spandrels, handle and escutcheon, the top with gilded and cast urn and flame finials, glazed back and sides, roman numeral composite dial with silvered chapter ring, pierced blued steel hands, brass spandrels with foliate ornament and central mask, the arch with calendar dial and a hollow sunburst mask with silvered date chapter and a silvered alarm dial below an aperture for the mock pendulum, eight day, three train movement with bob pendulum and fusee on time train only, alarm is cord wound from the left side, back plate with engraved acanthus, birds and central fruit basket above an oval reserve with the maker's name

**\$1800-\$2500** Circa 1750 18in x 11in x 7in



**394**

Gordian Hettich Sohn, Germany, two horn trumpeter mantel clock, walnut veneered case with wood dial with applied roman numerals, reproduction bone hands, 30 hour, time and strike spring driven brass movement stamped "G. H. S."

**\$1000-\$1500** Circa 1900 26.75in x 13.25in x 8.25in



**395**  
Germany, a rare musical hanging dial clock playing multiple tunes on nine glass bells, the reverse painted glass dial with wooden hand painted frame is decorated with family crest "HFR", rampant lions and date 1833 in arch, floral corner spandrels surrounding arabic numeral chapter ring, and two classical figures bearing garlands and a sheath of wheat flanking center arbor, 30 hour, three train, wooden works movement with time, strike on one bell, and music playing on the quarter hours actuated and controlled by 5in (12.6cm) wide wooden cylinder with pins, cows tail pendulum suspended in front of dial above 12

**\$2500-\$3500** Circa 1833 13.2in x 9.5in x 8.8in



**396**  
Black Forest, Germany, a hanging eight note flute clock in a profusely carved walnut case, including three ibex at the top and two below, oak leaves and acorns throughout and the top rail with a quail on each side, three train, weight driven movement playing music on the hour and half hour with flautist in alpine dress emerging from behind double doors to call tune

**\$3000-\$4000** Circa 1890 39in x 20in x 11in



**397**  
Black Forest, Germany, a hanging trumpeter clock, walnut case adorned with vines, grape leaves, and lattice fencing continuing down to the bottom bracket, case sides with pierced access doors matching the vine motif, wooden dial with applied bone roman numeral numerals, carved bone hands, eight day, two train, weight driven brass movement with tune playing on four pipes, a carved and painted trumpeter emerging from behind the double doors at the hour and half hour, round wooden pendulum with carved leaf motif

**\$1200-\$1600** Circa 1890 36in x 21in x 10in



**398**  
Austria, long duration Alt Deutsch style Vienna regulator clock, the 64 inch mahogany and burl mahogany case with carved capitals and bases, fluted half columns and ebonized accents, roman numeral white enamel two part dial marked "Month Regulator", gridiron temperature compensating pendulum with inset enameled R/A rate adjustment indicator, fine 30 day time only weight driven movement with maintaining power

**\$1000-\$1500** Circa 1880 64in x 18.75in x 7.5in



**399**

J.J. Elliot, London, a monumental hall clock chiming on nine tubular bells in a heavily carved solid mahogany case, hood with two free standing fluted columns with large carved capitals flanking door with heavy beveled glass, fretwork side panels on hood with silk lining, surmounted by superior and ornately carved top with lion's head and profuse open work, trunk with two extra large fluted and carved columns, arched door set with heavy beveled glass and framed with egg and dart molding, base with carved double cornucopia overflowing with fruit and a northwind figural, all resting on carved ball feet, 13 inch brass dial with engraved brass corner spandrels and center, silvered chapter ring with applied brass arabic numerals and moon phase signed Elliot London, three subsidiary dials for seconds, chime / silent and tune selection for Whittington or Westminster, blued steel hands, three train movement driven by three matching brass weights striking and chiming the quarter hours on nine matching nickel plated tubular bells signed "Harris & Harrington Pat July 30 1901"

**Condition:** excellent original condition with minor case imperfections; dial silvering slightly discolored and moon phase with minor paint loss; original pendulum and weights

**\$5000-\$7000** Circa 1910 103in x 30in x 23in



**400**

J.J. Elliot, London, a monumental hall clock chiming on nine tubular bells in a heavily carved solid mahogany case, hood with eight free standing columns flanking door with heavy beveled glass, large carved side windows on hood with dental molding and surmounted by ornately carved top, trunk with multitude of carvings framing door set with heavy beveled glass, base with recessed carved panel on front and recessed panels on the sides, all resting on block feet, 13in brass dial with engraved brass corner spandrels and center, silvered chapter ring with applied brass arabic numerals and moon phase signed Black, Starr & Frost, New York and Elliot London, three subsidiary dials for seconds, chime / silent and tune selection for Whittington or Westminster, blued steel hands, three train movement driven by three matching brass weights striking and chiming the quarter hours on nine matching nickel plated tubular bells signed "Waltham Clock Company"

**Condition:** excellent original condition with minor imperfections to case and finish; dial is exceptional with almost no discoloration; original weights and pendulum; tubular bells may be replacements

**\$4000-\$6000** Circa 1910 101in x 28.5in x 16in



**401**

Germany, a 19th century organ or flute tall clock, the mahogany case with broken arch and beaded molding on crest, crotch mahogany panels, reeded columns flanking the trunk door, and resting on a slightly scalloped base, the roman numeral convex painted wooden dial with floral decoration in the arch, two female harpists, and Union Jack flags in lower right and left corners, 8 day, time and music playing on forty pipes or flutes

**Condition:** case has an old finish and bottom has been shortened; dial with vertical split through center and minor flaking; one pipe missing; only the music train weight is present.

**\$3000-\$4000**



**402**

Benjamin Gray and Justin Vulliamy, London, an 18th century tall clock in a simple, unadorned mahogany case with a plain trunk and base, hood with three quarter columns with brass capitals and dental molding below a flat top, 12 inch square silvered roman numeral dial with subsidiary seconds, date aperture above 6:00, and blued steel hands, 8 day, two train weight driven movement striking on a bell, large regulator style double sided brass pendulum, brass clad weights

**\$3000-\$4000**

*Circa 1760*

*77in x 19in x 10in*

**403**

John Barr, Port Glasgow, Scotland, a late 18th century tall clock in a well proportioned mahogany case, reeded columns with brass capitals and checkered inlay around door on scroll top hood with fretwork and dental molding and sunburst inlay on scrolled ends, trunk with matching checkered inlay and inlaid oval center and quarter columns, base with matching checkered inlay and central geometric inlaid pattern all resting on French feet, brass dial with cast brass spandrels and ornately engraved center, roman numeral silvered chapter ring with outer arabic numerals, unusual brass ring above moon phase reads "HIGHWATER AT PORT GLASGOW" with a scale for the tides, whimsical moon phase with engraved hemispheres, subsidiary seconds and calendar aperture, weight driven movement of eight day duration striking the hour on a bell

**\$2000-\$3000**

*Circa 1790*

*87in x 17in x 10in*



**404**

Silas Hoadley, Plymouth, Conn., tall clock with rare eight day wooden works movement in a solid cherry case with fretwork top, brass finials and bracket base, colorful painted wooden dial with Hoadley signature and floral and village scenes, steel hands, tin can weights

**\$1500-\$2500**

*Circa 1820*

*93in x 18in x 11in*



**405**

Seth Thomas Clock Co, Thomaston, Conn, "Hall Clock No. 21" tall clock, mahogany case with panels of burl mahogany veneer, 12 inch silvered brass dial, maltese and pointer hands, signed eight day weight driven time and quarter hour strike on 4 cup bells and hour strike on a large cathedral gong; movement has lantern pinions and beats seconds

**\$1500-\$2500**

*Circa 1894*

*94in x 20.25in x 13.25in*



2024 NAWCC

# Ward Francillon Time Symposium



October 21-24 • Sturbridge, MA

## A Horological Tour of New England

Experience New England horology with lectures and exclusive museum tours at the Willard House & Clock Museum, the American Clock & Watch Museum, and Old Sturbridge Village, including the J. Cheney Wells collection of clocks.

**Speakers:** Mary Jane Dapkus, Andrew Dervan, Damon Di Mauro, Greg Gorton, Rich Newman, Sara Schechner, Aaron Stark

**James Arthur Lecturer:** Dava Sobel will provide the backstory of her acclaimed book *Longitude* and its impact on the public's understanding of horology, specifically marine timekeeping.



Register at  
[education.nawcc.org/  
symposium](http://education.nawcc.org/symposium)





**406**  
 E. Howard & Co., Boston, Mass., hanging “No. 6 Regulator” clock, the largest of Howard’s figure eight wall clocks, black walnut case with a roman numeral painted metal dial with subsidiary seconds, blued steel diamond hands, reverse painted tablets and damascened pendulum bob, signed eight day, time only, weight driven movement with maintaining power and meter pendulum with 8in bob

**\$15000-\$20000**  
 Circa 1900 58.75in x 18.75in x 7.25in

**407**  
 E. Howard & Co., Boston, Mass., “No. 7 Regulator” hanging figure eight style clock, walnut case with reverse painted and gold leaf throat and lower tablets, painted 12 inch metal dial signed “E. Howard & Co. Boston” with blued steel diamond hands, signed eight day, time only weight driven movement with damascened pendulum bob and gold leafed pendulum rod

**\$8000-\$10000**  
 Circa 1900 50in x 17in x 6in

**408**  
 E. Howard & Co., Boston, Mass., “No. 8 Regulator” figure 8 style hanging clock in a walnut case, with painted metal dial, diamond hands, and eight day, weight driven brass movement, case is stamped “24”.

**\$3500-\$4500**  
 Circa 1900 44.5in x 14.5in x 5.75in

**409**  
 E. Howard & Co., Boston, Mass., “No. 9 Regulator” figure 8 style hanging clock in a walnut case, with roman numeral painted metal dial, moon hands, and signed eight day, time only, weight driven brass movement

**\$3000-\$4000**  
 Circa 1896 37.5in x 12.5in x 4.75in

**410**  
 E. Howard & Co., Boston, Mass., “No. 10 Regulator”, figure 8 style hanging clock in a walnut case, roman numeral painted metal dial, moon hands, and eight day, time only, weight driven brass movement

**\$2500-\$3500**  
 Circa 1890 34.25in x 11.25in x 5in



# E. HOWARD & CO.

*Boston, Massachusetts*



**411**

E. Howard & Co., Boston, Mass, hanging "No. 86 Regulator" clock in a cherry case with walnut burl accent panels on the door front, roman silvered brass dial, open diamond hands, signed eight day weight driven brass timepiece with maintaining power, dead beat escapement and glass vial pendulum bob

**Condition:** case in very good condition with an original finish and a number of minor scuffs and scratches; original hands and beat scale; signed silver dial in excellent condition; this is an excellent example of a very rare clock and the first we have offered for sale in over 25 years.

**\$15000-\$20000**

*Circa 1890 76in x 24.35in x 12.5in*



**412**

Seth Thomas Clock Co., Thomaston, Conn, hanging "Regulator No. 10" clock, walnut case, the back with mahogany veneer panel and ebonized trim, burl walnut accents on the door, corner spandrels and crest, roman numeral silvered brass dial with sweep second hand and spade hands, eight day weight driven timepiece movement with maintaining power, dead beat escapement and mercury pendulum

**Condition:** case in very good condition with a newer finish; bezel and door glass replaced; original hands

**\$15000-\$25000**

*Circa 1879 72in x 20in x 9.25in*



# E. HOWARD & CO NO. 36

## 413

E. Howard & Co., Boston, Mass, hanging "No. 36 Regulator" clock in a walnut case, roman numeral painted metal dial, diamond shaped hands, signed eight day weight driven brass timepiece movement beating seconds, maintaining power, deadbeat escapement and glass vial pendulum bob with lead slug

**Condition:** case with an older finish, in very good condition; one side ornament with a repair; original painted dial in very good condition with some minor discoloration and surface abrasion from contact with the hands; original glasses in the door and bezel; original hands

**\$12000-\$16000** Circa 1880 74in x 27in x 8.5in

## 414

E. Howard & Co., Boston, Mass, hanging "No. 60 Regulator" clock in a cherry case, with roman numeral silvered brass dial, open diamond hands, and signed eight day, weight driven timepiece with maintaining power and deadbeat escapement

**Condition:** refinished case, several rough spots on the base piece and each side of the door and a repair to the case top left return; door glass is new, side glasses are original; dial is signed with some loss of the silver plating; clock currently has a single jar mercury pendulum

**\$12000-\$16000** Circa 1885 80in x 26.25in x 12.25in

# E. HOWARD & CO NO. 60

# SETH THOMAS

# NO. 16

## 415

Seth Thomas Clock Co., Thomaston, Conn, hanging "Regulator No. 16" clock in an oak case with ornamental burl veneer panels, painted metal dial, spade hands, eight day weight driven timepiece movement with maintaining power, deadbeat escapement and sweep second hand

**Condition:** Very clean refinished case, shrinkage cracks at the top of the door, nicely repainted dial, original hands, movement signed, all finals replaced, all door and case glasses original with a crack in the top left case side glass, damascened pendulum bob with some surface issues.

**\$8000-\$10000** Circa 1900 76in x 23in x 8in

## 416

Seth Thomas Clock Co., Thomaston, Conn, hanging "Regulator No. 19" clock in a walnut case with "Railroad Time" in gold leaf on the door, roman numeral painted metal dial signed "Santa Fe Railway System / Standard Dial" with 1 through 60 minute markers around outer chapter ring, spade hands, signed eight day weight driven timepiece movement with maintaining power, deadbeat escapement, sweep second hand and mercury pendulum.

**Condition:** case with original finish; raised walnut panel with ebonized trim on case back; assorted scuff and scrape marks to the case surface; crest and finials original; drops appear to be later replacements; repainted dial; original hands; door glass, gold leaf lettering and case side glasses original

**\$8000-\$10000** Circa 1890 77in x 23in x 10in

# SETH THOMAS

# NO. 19





**417**

Seth Thomas Clock Co., Thomaston, Conn., hanging "Regulator No. 60" clock in an oak case, roman numeral paper dial with sweep second hand, spade hands, eight day weight driven timepiece movement with maintaining power and dead beat escapement, serial #505

**Condition:** case is in excellent condition with a dark stain and original finish with some minor cracking of the ornamental oak veneer bands on the door frame; the bezel glass shows age, the door glass is replaced; movement is the same as used in the No. 16 and No. 19 regulators; the original paper dial has darkened. This Seth Thomas model is scarce as we have sold only two examples in the past 18 years.

**\$8000-\$12000** Circa 1886 58.5in x 18.25in x 8in



**418**

United States Clock Co., New York, NY, rare hanging jeweler's regulator clock in a mid-size walnut case, roman numeral engraved and silvered brass dial, serpentine hands, eight day, weight driven, time only brass movement with mercury pendulum

**Condition:** walnut case in good condition and in an old finish, has some loss to the burl walnut panel on the left just below the top door and some minor damage at the round base, original brass dial has lost most of its silvering, replaced hands, finely made heavy plate movement in nice condition, ebonized finial might not be original as the dowel in the bottom is too small for the hole, movement is signed. We recently sold the 81in version of this clock in our May 2023 sale for \$13000 plus 20% buyer's premium. This slightly smaller version at 72in is quite attractive and has the prestige and presence of the larger model but would fit in most homes comfortably.

**\$6000-\$8000** Circa 1900 72in x 22.25in x 11.5in



**419**

E. Howard & Co., Boston, Mass., hanging "No. 71 Regulator" clock in a walnut case with birds eye maple weight baffle and turned finials and drops, roman numeral painted metal dial, moon hands, and signed, eight day, single train, weight driven brass movement

**Condition:** case in very good condition in what looks to be an original finish, birds eye maple baffle that covers the weight has a small damaged spot on the right side, original dial has minor loss at the mounting screws, original hands, pendulum, finials, and drops

**\$4000-\$6000** Circa 1888 70in x 21.5in x 9.25in





**420**

E. Howard & Co., Boston, Mass., hanging "No. 13 Regulator" clock in a walnut case, roman numeral painted metal dial, diamond form hands, signed eight day, weight driven, time only brass movement

**\$3000-\$4000** Circa 1874 56in x 17in x 7.25in



**421**

Howard & Davis, Boston, Mass., "No. 1 Regulator" hanging banjo clock in a rosewood grain painted cherry case with reverse painted throat and lower tablets, roman numeral painted iron dial with blued steel diamond hands and subsidiary seconds, eight day, time only, weight driven movement with maintaining power and dead beat escapement

**\$2500-\$3500** Circa 1858 49in x 19.5in x 6in



**422**

Waterbury Clock Co., Waterbury, Conn., hanging "Regulator No. 7" clock in a cherry case, roman numeral white enamel dial with sweep seconds hand, maltese hands, eight day weight driven brass No. 100 timepiece movement with maintaining power and dead beat escapement

**\$1800-\$2500** Circa 1891 81in x 25.5in x 11in



**423**

Ansonia Clock Co., New York, NY, "General" hanging clock in a mahogany case, large roman numeral papered dial, spade hands, eight day, time only movement driven by two weights

**\$1200-\$1600** Circa 1886 70in x 28.5in x 6.25in



**424**

Oliver Bracket, Vassalboro, Maine, rare mantel clock in a miniature mahogany and mahogany veneered pillar and scroll case with painted metal dial, barbed hands, and 30 hour time and strike weight driven brass movement

**\$2500-\$3500** Circa 1830 22in x 12.25in x 3.75in



**425**

Pennsylvania, a shelf clock in an unusually styled mahogany and mahogany veneered case with fretted scroll work top and scrolled sides, roman numeral embossed painted metal dial, diamond form hands, and eight day, time and strike weight driven brass movement with lantern pinions and the strike on the left side

**\$1000-\$1500** Circa 1840 46.25in x 19.5in x 8.25in



**426**  
 Martin Cheney, Montreal, Canada, "Parliament" style hanging tavern timepiece in an inlaid mahogany veneered case with crotch mahogany veneered door panel, unusual roman numeral engraved silvered brass dial, eight day, weight driven, single train brass movement, stamped "Cheney" in the upper left corner and "137" in the upper right corners

**\$1200-\$1600** Circa 1835 37.5in x 17in x 5in



**427**  
 Ansonia Clock Co., New York, NY, "Porcelain Hanging No. 3" Royal Bonn wall clock in a full bodied case with spread eagle figure at base and colorful gold and floral highlights throughout, rear of case with red numbering below a golden Royal Bonn stamp, roman numeral white enamel dial with Ansonia logo and blued steel hands, embossed cast brass bezel with beveled glass, eight day, time and strike movement with lever escapement striking the hours and half hours on a nickel plated bell

**\$3000-\$4000** Circa 1895 19in x 10in x 4.5in



**428**  
 Ansonia Clock Co., New York, NY, "Crystal Regulator No. 3" mantel clock, brass case with beveled glass sides and doors and Royal Bonn porcelain top and base, signed enamel dial, fleur de lis hands, eight day spring driven brass movement with hour and half hour strike and visible escapement

**\$1000-\$1500** Circa 1914 18.25in x 9.25in x 8.25in

**429**  
 Ansonia Clock Co., New York, NY, "Juno" mantel clock, cast spelter case depicting robed female supporting on her raised left arm a three rod, faux gridiron pendulum with spherical bob in a red finish, the matching upper sphere with arabic numerals, fancy pierced and engraved hands, and containing an eight day brass timepiece movement with Ansonia signature

**\$1000-\$1500** Circa 1901 23in x 7in x 7in





**430**  
George Jones, New York, a late 19th century Vienna style hanging regulator, cherry and cherry veneer case with ogee bottom bracket and turned drops, molded door with arched top and carved corner ornaments, and crest with broken pitched pediment and turned, carved finial, roman numeral white enamel dial with ornate steel hands and sweep seconds, weight driven brass movement with dead beat escapement, gridiron pendulum, and brass clad weight

**\$1000-\$1500** Circa 1880 54in x 14in x 7in



**431**  
Ithaca Calendar Clock Co., Ithaca, NY, "No. 3 Vienna" hanging clock in a walnut case with roman numeral papered metal dials and pierced fret mask, 30 day, time and perpetual calendar, spring driven movement by E.N. Welch

**\$2500-\$3500** Circa 1880 51in x 16in x 7in



**432**  
Ithaca Calendar Clock Co., Ithaca, NY, "No. 15 Melrose" double dial calendar mantel clock in an ebonized cherry case, roman numeral papered metal dial, spade hands, eight day, time and strike, spring driven brass movement

**\$6000-\$8000** Circa 1880 22in x 11.25in x 15.25in



**433**  
Terry Clock Company, Conn., torsion candlestick timepiece on white milk glass pedestal with glass dome, signed paper dial with blued spade hands, thirty-hour spring driven timepiece with balance arms, hairspring, and regulator below the movement, back plate stamped Terry Ville Manufacturing Company, Terry Ville, Conn., Patented October 5th, 1852, spring driven movement

**\$600-\$800** Circa 1855 10.5in x 4.5in x 4.5in



**434**  
Seth Thomas Clock Co., Thomaston, Conn., "Regulator No. 4" wall clock in a walnut case with burl accent panels and leaf carved corbels, turned columns and teardrop finials at the base, 7.5in enamel dial with subsidiary seconds, a fine eight day weight driven timepiece movement with maintaining power, dead beat escapement and gilded mount, brass clad damascened pendulum and weight with knurled caps

**\$5000-\$7000** Circa 1879 48in x 16.5in x 7.5in



**435**  
Seth Thomas Clock Co., Thomaston, Conn., "Regulator No. 5" hanging clock in a solid walnut and burl walnut veneered case with carved shell crest with tassels, cylindrical turned finials, burl walnut panels, leaf carved corbels, turned columns and teardrop finials at the base, silvered brass dial with subsidiary seconds, blued steel spade hands, a fine eight day weight driven time-piece movement with maintaining power and dead beat escapement, brass clad pendulum and weight with knurled caps

**\$5000-\$7000** Circa 1880 50in x 18in x 7.5in



**436**  
Seth Thomas Clock Co., Thomaston, Conn., "Regulator No. 7" hanging clock in a cherry case, with roman numeral painted metal dial, spade hands, and eight day, weight driven, time only brass movement

**\$3000-\$5000** Circa 1896 45in x 18.25in x 7.75in



**437**  
Waterbury Clock Co., Waterbury, Conn., "Regulator No. 66" hanging clock in an oak case, with painted metal dial, spade hands, eight day, time only movement signed Waterbury and driven by two weights with dead beat escapement

**\$1200-\$1600** Circa 1906 67in x 26in x 7in



**438**

Welch, Spring & Co., Forestville, Conn., a D.J. Gale "12-in Gallery" hanging astronomical calendar clock in a rosewood veneered case with papered metal dial, spade hands, and eight day, double wind spring driven brass movement with lever escapement

**\$5000-\$8000** Circa 1873 17.5in x 17.5in x 4in



**439**

Welch, Spring & Co., Forestville, Conn., "Regulator Calendar No. 1" in a rosewood veneered case with 16 inch painted zinc roman numeral dial with center day of week indicator, blued steel maltese hands, B.B. Lewis enclosed perpetual calendar mechanism, eight day, two weight, time-only, upside-down movement with recoil escapement and two cylindrical compounded iron weights, wooden pendulum rod and brass bob

**\$2000-\$3000** Circa 1878 53in x 23.5in x 5in



**440**

Welch, Spring & Co., Bristol, Conn., "Auber, B.W." calendar mantel clock in a black walnut case, with roman numeral painted metal dial, maltese hands, brass strap eight day weight driven time and strike movement with the B. B. Lewis club tooth escapement and the B. B. Lewis patented perpetual calendar mechanism

**\$1500-\$2500** Circa 1878 41.5in x 23.25in x 8.25in



**441**

Welch, Spring & Co., Forestville, Conn., "Patti V.P. No. 2" or "Miniature Patti" mantel clock in a rosewood and rosewood veneered case, roman numeral papered metal dial, moon hands, and eight day, time and strike spring driven brass movement

**\$1000-\$1500** Circa 1886 10.5in x 7.5in x 4in

# Index

American Waltham Watch Co. 313-315, 317, 321-323, 328-330, 333-336, 340, 342-345, 349, 350, 354  
Angelus 366, 369  
Ansonia Clock Co. 423, 427-429  
Auber B.W.Calendar (Welch, Spring & Co.) 440  
Ball Watch Co. 346  
Black Forest 375, 394-397, 401  
Boston Watch Co. 324  
Bracket Clock 389-391  
Bracket, Oliver 424  
Breitling 363  
Brocot & Dellettrez 388  
Calendar Clock 388  
Cariage Clock 392  
Cheney, Martin 426  
Clebar 372  
Columbus Watch Co. 318, 325, 326  
Crysal Plate (Waltham Watch Co.) 313  
Crystal Regulator No. 3 (Ansonia Clock Co.) 428  
Dennison, Howard & Davis 324  
Elgin National Watch Co. 320, 338, 351, 352  
Elliott, J. J. 399, 400  
Franck Muller 364  
French Industrial Series 380, 381  
Gale 12-Inch Gallery (Welch, Spring & Co.) 438  
General (Ansonia Clock Co.) 423  
GMT Master (Rolex Watch Co.) 358  
Gordian Hettich Sohn 394  
Guilmet, Andre Romain 381  
Hall Clock No. 21 (Seth Thomas Clock Co.) 405  
Hamilton Watch Co. 348, 371  
Hampden Watch Co. 341  
Hoadley, Silas 404  
Howard & Co., E. 316, 319, 327, 337, 347, 355, 406-411, 413, 414, 419-421  
Illinois Watch Co. 331, 353, 431-433  
Ithaca Calendar Clock Co. 431-433  
Jones, George 430  
Juno (Ansonia Clock Co.) 429  
LeCoultre 365, 368, 370,  
Mermond Freres 376  
Meylan, C. H. 304  
Montres Tudor 360  
Mudge & Dutton 310  
Music Box 376-379  
Musical Clock 395, 401  
Mystery & Swinger 382-387  
Nicole, Nielsen & Co. 305  
No. 15 Melrose (Ithaca Calendar Clock Co.) 432  
No. 3 1/2 Parlor (Ithaca Calendar Clock Co.) 433  
No. 3 Vienna (Ithaca Clock Co.) 431  
Omega Watch Co. 362, 373, 374  
Organ Clock 401  
Parliament (Martin Cheney) 426  
Patek, Philippe & Co. 308  
Patti V.P. No. 2 (Welch, Spring & Co.) 441

Picture Frame Clock 379  
Porcelain Hanging No. 3 (Ansonia Clock Co.) 427  
Premier Maximus (Waltham Watch Co.) 315  
Regina Co., The 377, 378  
Reginaphone 377  
Regulator Calendar No. 1 (Welch, Spring & Co.) 439  
Regulator No. 1 (Howard & Davis) 421  
Regulator No. 4 (Seth Thomas Clock Co.) 434  
Regulator No. 5 (Seth Thomas Clock Co.) 435  
Regulator No. 6 (E. Howard & Co.) 406  
Regulator No. 7 (E. Howard & Co.) 407  
Regulator No. 7 (Seth Thomas Clock Co.) 436  
Regulator No. 7 (Waterbury Clock Co.) 422  
Regulator No. 8 (E. Howard & Co.) 408  
Regulator No. 9 (E. Howard & Co.) 409  
Regulator No. 10 (E. Howard & Co.) 410  
Regulator No. 10 (Seth Thomas Clock Co.) 412  
Regulator No. 13 (E. Howard & Co.) 420  
Regulator No. 16 (Seth Thomas Clock Co.) 415  
Regulator No. 19 (Seth Thomas Clock Co.) 416  
Regulator No. 36 (E. Howard & Co.) 413  
Regulator No. 60 (E. Howard & Co.) 414  
Regulator No. 60 (Seth Thomas Clock Co.) 417  
Regulator No. 66 (Waterbury Clock Co.) 437  
Regulator No. 71 (E. Howard & Co.) 419  
Regulator No. 86 (E. Howard & Co.) 411  
Repeating Watch 314  
Richard & Cie 392  
Rockford Watch Co. 332, 339, 356  
Rolex Watch Co. 358, 361  
Seth Thomas Clock Co. 405, 412, 415-417, 434-436  
Spaulding & Co. 304  
Stauffer, Henry O. 311  
Steam Boiler Clock 380  
Steam Hammer 381  
Stella Music Box 376  
Submariner (Rolex Watch Co.) 361  
Table Clock 393  
Tall Clock, Grandfather, Hall, Floor Regulator 399-404  
Tourbillon Watch 305  
Trumpeter Clock 394, 396, 397  
Ulysse Grandjean, A. 312  
United States Clock Co. 418  
Usher & Cole 303  
Vacheron & Constantin 357, 359  
Vienna Regulator 398  
Voisin, Charles 389  
Waterbury Clock Co. 422, 437  
Welch, Spring & Co. 438-441  
Windmills, Thomas 393  
Xavier Therin 379  
Zenith 367

## Schmitt Horan & Co. General Terms & Conditions

**SALES TAX and BUYER'S PREMIUM:** You agree to pay the Buyer's Premium on every item purchased. The Buyer's Premium is a percentage of the hammer price of each item added to the sale total for that item. There is NO sales tax in New Hampshire. The Buyer's Premium is 20% of the hammer price.

**SPECIAL EVENT:** The special event portion of the April 27 auction (Lots 1 - 300) will not offer phone bidding, internet bidding, nor absentee bidding. Bidder must be in attendance or have someone represent them in attendance to bid. See list of recommended Buyer's Agents below for suggestions.

**LIVE BIDDING:** The April 28 auction is open to the public and live in-person attendance is allowed and encouraged. On items after lot 300 we also offer several alternatives to attending in person, including our own live bidding software at bids.schmittoran.com. You may also bid live at www.invaluable.com or www.liveauctioneers.com or www.bidsquare.com. The total Buyer's Premium for third party platforms purchases is 28%, which includes an 8% fee charged by the third party. Because of the inherent delay in and the remote nature of online bidding, any item sold through any of the various online platforms may be reopened at the discretion of the auctioneer at anytime during the auction.

**PHONE BIDS:** On items after lot 300 you may register to bid via telephone. It is necessary to contact us at least to 72 hours prior to the auction to arrange for phone bidding. Pre-registration is required.

**ABSENTEE or LEFT BIDS:** In all cases, a left or absentee bid will be executed for as low a price as possible. Many absentee bids lose by only one bid, a frustration that can be reduced if a live person has authority to bid "one more time". Therefore, we offer **PLUS ONE (+1)** bidding format to allow our absentee bidders to be more competitive, contact us for details. Bid forms are available on our web page or in the rear of the catalog. Bids submitted online, by fax, snail mail or e-mail to: **bids@schmitt-horan.com** must be received no later than 48 hours prior to the start of the auction. Absentee bidding and phone bidding services are provided by Schmitt Horan & Co. as a courtesy to our clients. Schmitt Horan & Co. cannot be held responsible or liable for failure to receive or execute absentee bids.

**PAYMENT FOR SUCCESSFUL BIDS:** We will normally notify successful bidders within three business days of the auction. We use e-mail to notify bidders and postal mail if a client does not have e-mail available. Personal checks drawn on a U.S. bank are acceptable. We also accept VISA, Mastercard, Discover, American Express and Paypal, all subject to an additional 3% processing fee. Note that shipping charges are extra and will be billed by Schmitt Horan & Co. or a third party at the time of shipment. Payment is due on receipt of invoice, and no later than 15 days from the date of the auction. Items not paid for within the 15 days from the date of the auction will be charged a 2% monthly interest rate on the balance due. Large international transactions may be performed via wire transfer. Details available upon request.

**ITEMS & ACCESSORIES:** It is the buyer's responsibility to verify that he / she has received accessories that may be separate when taking possession of their merchandise. Items purchased by bidders off site are not available for pick up during the sale at the auction hall.

**ESTIMATES and RESERVES:** After each description, we have indicated a high and low dollar estimate that should be used as a general guide. The final price may vary considerably from these estimates. There are few items in this sale with a reserve, or confidential minimum selling price, established with the consignor or vendor. Items failing to sell will be noted in the results sheet as \$0.00.

**PHOTOGRAPHS:** Please note, some items when photographed, particularly watches, may have shadows, reflections or other marks that are a result of the photographic process and are not permanent. Both buyer and seller grant unrestricted use of auction photographs and prices realized to Schmitt Horan, LiveAuctioneers.com, Invaluable.com and Bidsquare.com.

**ITEM DESCRIPTIONS & CONDITIONS:** Employees do their best to aid and assist the customer, however any statements made by Schmitt Horan & Co. employees, agents or contractors are not considered a definitive record of what is being sold. The final record of what is being sold in a lot under any and all circumstances is the catalog provided by Schmitt Horan & Co., both printed and online. If there is a discrepancy between employee statements and the catalog, the catalog is the final and ultimate legal record of what is offered in the lot. We do our best to identify restoration, alteration or other condition issues in the condition report. We shall not be held liable for failure to do so. **IT IS THE RESPONSIBILITY OF THE BUYER TO CONFIRM CONDITION PRIOR TO BIDDING.** If the lot description includes the words "as found" or "as is" the item is sold without any guarantees. **All lots containing multiple items are considered in "AS IS" condition and cannot be returned.** General maintenance items such as broken suspension springs, broken or missing weight cords, & missing keys are not mentioned. Most clocks and watches will require cleaning and service after purchase. All costs associated with this are the responsibility of the client. Dimensions are approximate.

**SHIPPING:** We use outside companies to ship clocks that provides services worldwide: Please see Vendor Section for details. We are often able to offer "in-house" shipping on watches.

**PICK UP IN LIEU OF SHIPPING:** Purchases by absentee bidders, phone bidders or internet bidders may be picked up no sooner than 3 business days following the sale. You or your agent may arrange pickup by appointment at our office in Candia, NH. Please plan to settle your account at time of pick up. Items left in our custody for over 30 days from the date of the auction will be charged a storage fee of \$25 per item per week, which must be paid before items are released. We shall not be held liable for damage occurring to any item left in our custody after 30 days from the date of the auction.

**BUYER'S AGENT:** We are increasing access to live bidding agents, who can independently execute your bids the day of the sale. This service provides an independent set of eyes to validate a potential purchase or to provide flexibility in spending needs. Other additional services provided by these agents include careful packing and flexible delivery options. Buyer's Agents generally charge a commission on each successful sale, which they will discuss with you prior to executing your bids.

Agents available for our April 27 & 28, 2024 sale are listed below:

### Clocks & Antiques

Rick Merritt rmerritt@ptd.net or (610) 780-5979

### Clocks, Watches & Antiques

John Kovacic jkovacic@verizon.net or (315) 823-1205

**RETURNS AND REFUNDS:** Returns will be considered only for items that do not conform to catalog description. **UNDER NO CIRCUMSTANCES WILL RETURNS BE ACCEPTED OR REFUNDS ISSUED LATER THAN 30 DAYS AFTER THE AUCTION.** If there is a problem and a refund or adjustment is requested we ask to be notified within one week of the auction and require to be notified ABSOLUTELY no later than 30 days of the auction or 7 business days after the item(s) are delivered, whichever is earliest, no exceptions. Transit damage alone is not sufficient reason to return an item. We will assist in claims against transport companies.

**DEFAULT and LITIGATION: REGISTRATION TO BID INDICATES ACCEPTANCE BY THE BIDDER OF THESE TERMS ENFORCEABLE AS A NEW HAMPSHIRE CONTRACT.** Schmitt Horan & Co. will not be liable for default by either the buyer, consignor or the vendor. No purchase shall be claimed or removed until paid for in full. Schmitt Horan & Co. reserves the right to refuse to accept bids made by a defaulting buyer at any future auction and to collect all costs and attorney's fees from the buyer associated with litigation and storage involving default. All legal disputes arising from this contract shall be disputed, litigated or mediated under New Hampshire law in the State of New Hampshire. All consignors or vendors are represented in our records by either name or a code directly associated with that name and are also a legal party to this contract.

**VENDORS & TRADE RELATIONS**

**Transport/Shipping**

These are blanket wrapped hand delivery specialists. Ask for quotation.

- >Mr. Scott Salzarulo, 200 W. Housatonic, #20, Pittsfield, MA 413-212-1252
- >Ms. Wendy Buckus, 64 Hutchins, Concord, NH, 03301, 603-491-5199, nwtransport@aol.com
- >Mr. Scott Cousins, 22 Nichols St. Merrimac MA 01860, scottcousins22@aol.com, (978) 419-9353
- >Sure Express Worldwide, 110 Industrial Way, Portland, ME 04103, (800) 335-9996, sureexpress@maine.rr.com
- >Marius Popescu, 1421 Amherst Ave, Los Angeles, CA 90025, (310) 866-3744, mariuspopescu2002@gmail.com

**Packing, Crating & Shipping (Standard Big Box Shipping, UPS, FED EX, USPS)**

- >Parcel Room, 1465 Woodbury Ave, Portsmouth, NH 03801 (603) 431-4205, auctions@parcelroom.com
- > The UPS Store, 35 Manchester Rd Ste 11A, Derry, NH 03038, (603) 434-9899, store4686@theupsstore.com
- > Package Central, 1 Freetown Rd, Raymond, NH 03077, (603) 734-9071, info@packagecentral.com

**Barometer Repair**

- >Winchester, MASS, 01890, Wayne Paskerian, (781) 729-0113, winway2@verizon.net

**Clock & Watch Sales & Repair MID-WESTERN & WESTERN STATES**

- >Carlsbad, CA, 92008, Richard Ivkovich, 2916 State St, (760) 729-1225
- >Costa Mesa, CA 92627, Robert Emenger, Buck's Clock Shoppe, 440 E. 17th St, (949) 631-3215, bucksclockshoppe@msn.com
- >Laguna Beach, CA 92651, Dean Armentrout, 2185 Laguna Cyn-#B-1, 949-494-2711, dean-armentrout-antiques.com
- >San Diego, CA, 92103; Time Traveler, Rich Wauson, 4227 Park Blvd, 619-298-5391, rew11ttc@gmail.com
- > Palatine IL, 60067, Tick-Tock Clock Repairs Inc., 342 South Hart St, 847-991-4230, www.ticktockclock.com
- >Mendota Height, MN, 55118, Cutter Edge, Inc 1169 Veronica Ln, (612) 280-5560 wcutter@cutteredge.com
- > Oklahoma City, OK, 73122 Richard Garrett, House of Time, 3144 N MacArthur, (405) 946-0029 rghorologist@hotmail.com

**Clock & Watch Sales & Repair EASTERN STATES & CANADA**

- >Burlington, CONN, 06013; Mel Brown, 37 Village Lane, 860-673-2256 – Tickdoc1@aol.com
- >E. Norwalk, CONN, 06855; The Clockery, 14 Van Zant St, 203-838-1789-www.clockery.com
- >Cromwell, CONN, 06051, Frank De Felice, New Britain Clock Repair, 26 Edgewood St, 860-635-5599
- >North Haven, CONN, 06473, Yankee Clock Peddler, (203) 288-4250, www.yankeeclockpeddlerct.com
- >Tampa , FLORIDA, 33612, Boyd Clock Repair, 11620 N. Florida Ave, (813) 777-3437, boydclocks@gmail.com
- >Harrison, MAINE, 04040, Harry Hepburn, 828 Edes Falls Rd, 04040, (207) 583-2821
- >Saco, MAINE, 04072; Robert Boyd, 60 Shadagee Rd. #24 - 603-801-8292, bobbboyd@rlbpab.com
- >Scarborough, MAINE, 04074, Scarborough Hollow Clock Works, 700 US Route 1, Ste 104, (207) 730-7288 - scarboroughhollow@maine.rr.com
- >Amesbury, MASS, 01913, Vincent Harrild, 1 River Ct. Suite 219 - (978) 314-8620, harrildvr@greenet.net
- >Newton, MASS, 02458, Watertown Watch & Clock, 230 California St, (617) 244-3779, chris@watertownwatchandclock.com
- >Swampscott, MASS, 01907, Phillips Clock Shop, 330 Essex St, (781) 593-1333, sales@phillipsclockshop.com, www.phillipsclockshop.com
- >Wayland, MASS, 01778, Michael Poisson, 508-655-1958, mljw92@aol.com
- >Warren, MICHIGAN, 48093; The Clockworks, 8385 Old 13 Mile Rd, (800) 574-9421, jkuechle@clockworks-inc.com, www.colcokworks-inc.com
- >Exeter, NEW HAMPSHIRE, 03833; Barlows Clock Repair, 45 Donna Dr. 603-778-1452
- >Hollis, NEW HAMPSHIRE, Russ Greenwood, 25 Louise Dr, 603-881-8309, rgtimeout44@msn.com
- >Catskill, NEW YORK, 12411; Franklin Micare, 349 Main St, 518-828-5751, franklinmicare@rocketmail.com
- >Little Falls, NEW YORK, 13365; Saving Time, PO BOX 169, savingtime@clockandwatchsite.com, (315) 823-1205, www.clockandwatchsite.com
- >New Hope, PENNSYLVANIA, 18938, 6340 Lower York Rd, (215) 862-2415, www.nationalclockrepair.com
- >Douglassville, PENNSYLVANIA, 1860 Weavertown Rd, 19518, Merritt's Anitques, (610) 689-9541, info@merritts.com, www.merritts.com
- >Peace Dale, RHODE ISLAND, Old School Antiques, Peter Nunes, 4 Hopkins Ln, (410) 742-2112, peter.nunes@verizon.net
- >Manassas, VIRGINIA, 20110; Orsini & Frost, 9071 Center Street, 703-368-0618

**Dial Restoration & Repainting**

- > The Clocksmith, 1531 Bower Ln, Johns Island, SC 29455, (843) 327-0455, bryan@clockrepaircharlestonsc.com, www.clockdialrestorations.com
- >The Dial House, 3971 Buchanan Hwy, Dallas, GA 30157, (770) 445-2877, dial\_house@juno.com, www.dialhouse.net

**Related Restoration Materials/Vendors**

- >Merritts, Inc., Box 277, Douglasville, PA, 19518, 1-800-345-4101 – www.merritts.com
- >Timesavers, Box 12700, Scottsdale, AZ, 85267, 1-800-552-1520 – www.timesavers.com

**Hand Painted Tablets**

- >Lee Davis, 4150 Old Orchard Rd., York, PA 17402, 717-757-7267
- >Tom Moberg, 2323 Vandekaar Rd, Owasso, MI 48867 989-723-3112

All listings are made free of charge. We apologize for any error or omission. Please let us know of address changes or poor service from those recommended.



Fax: (603) 432-2271  
 Phone: (603) 432-2237  
 E-mail: bids@schmitt-horan.com

--This form must be submitted 48 hours prior to the start of the auction--

PLEASE BID ON MY BEHALF, BIDDING AS CHEAPLY AS POSSIBLE, ON THE LOTS LISTED AND DESCRIBED BELOW. THE \$ FIGURE ENTERED IN THE RIGHT COLUMN IS MY MAXIMUM "HAMMER" PRICE, AND I UNDERSTAND THERE IS AN 20% BUYER'S PREMIUM ADDED TO THAT AMOUNT. THERE IS NO SALES TAX IN NH.

Please note: We offer "+1 BIDDING SERVICE". See our website for details.

LOT #	BRIEF DESCRIPTION	\$ BID / +1 (Y/N)
_____	_____	\$ _____ 1
_____	_____	\$ _____ 2
_____	_____	\$ _____ 3
_____	_____	\$ _____ 4
_____	_____	\$ _____ 5
_____	_____	\$ _____ 6
_____	_____	\$ _____ 7
_____	_____	\$ _____ 8
_____	_____	\$ _____ 9
_____	_____	\$ _____ 10
_____	_____	\$ _____ 11
_____	_____	\$ _____ 12
_____	_____	\$ _____ 13
_____	_____	\$ _____ 14
_____	_____	\$ _____ 15
_____	_____	\$ _____ 16

Additional sheets are acceptable. Upon notification that my bid or bids are successful, I shall promptly remit the balance due. I understand that I will be billed separately by the packing company for shipping.

\_\_\_\_\_/\_\_\_\_\_/\_\_\_\_ Total number of bids \_\_\_\_\_ )  
 Signature \_\_\_\_\_ Date \_\_\_\_\_

Name \_\_\_\_\_

Address \_\_\_\_\_ City \_\_\_\_\_

State \_\_\_\_\_ Zip \_\_\_\_\_ E-mail \_\_\_\_\_

Telephone: Evening \_\_\_\_\_ Day \_\_\_\_\_ Cell \_\_\_\_\_

All invoices will be mailed or e-mailed two to three days after the auction. Please do not contact us regarding an invoice until at least 72 hours after the auction.

We offer this service as a convenience to our customers, and we cannot be responsible for late mail, failed transmissions, or other failures to execute bids. We are also not responsible for an unreadable FAX written in blue ink. Please use black ink, print clearly and confirm successful transmission by phoning us. All bids are confidential. We urge you to FAX this form as regular mail can prove unreliable. Express or Priority mail are also satisfactory. NH Lic #5060. You may also submit this form by email or phone. For other questions or bids e-mail: bids@schmitt-horan.com or telephone the number listed above.

**COPIES OF THIS FORM ARE ACCEPTABLE**



**Sold \$6,600**

**August 5, 2023**

A large mid 20th century portrait  
of Winston Churchill  
by Yousuf Karsh

Contact Us for a  
Confidential Appraisal

[sales@schmitt-horan.com](mailto:sales@schmitt-horan.com)  
603.432.2237

